

THIS DRAWING IS UNPUBLISHED. RELEASED FOR PUBLICATION

© COPYRIGHT BY TYCO ELECTRONICS CORPORATION. ALL RIGHTS RESERVED.

LOC FT DIST 0

REVISIONS

P	LTR	DESCRIPTION	DATE	DWN	APVD
	A		11/16/06	SS	SRY
	A1	REVISED PER ECO-09-024927	10NOV09	KK	AEG

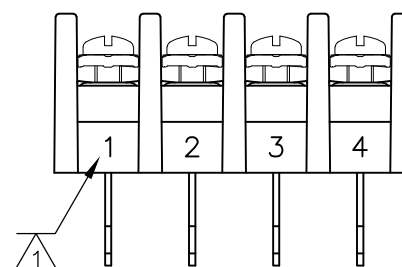
MATERIAL:
 HOUSING: NYLON, UL94V-0, BLACK.
 TERMINALS: BRASS, BRIGHT TIN PLATED.
 SCREWS: 6-32, STEEL, ZINC CHROMATE FINISH.

ELECTRICAL:
 MAXIMUM CURRENT: 20A
 OPERATING VOLTAGE: 600V
 WIRE RANGE: 12-22 AWG

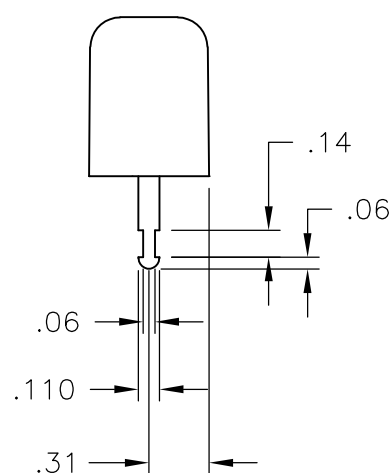
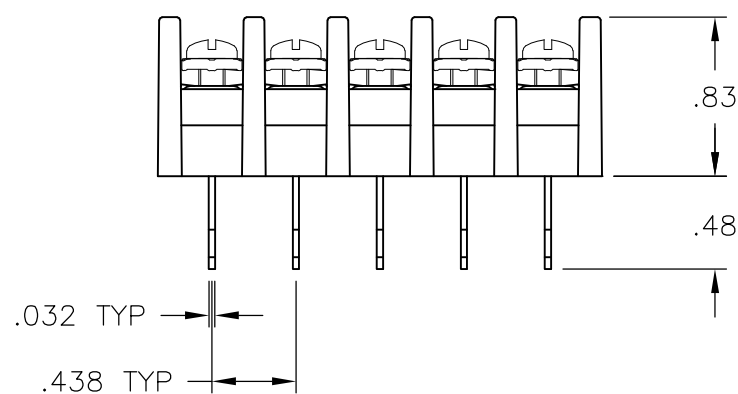
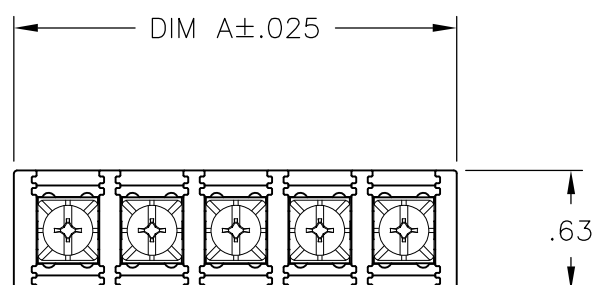
ENVIRONMENT:
 OPERATING TEMP.: -60°C TO +105°C

① MARKED WITH WHITE INK APPROX AS SHOWN.

② OBSOLETE PARTS: OBSOLETE CIS STREAMLINING PER D.RENAUD/D.SINISI



② OBSOLETE ~~9-796602-1~~



SEE FIGURE ② OBSOLETE ~~9-796602-1~~

DIM A	NO. OF POS.	CATALOG NUMBER	PART NUMBER
11.937	27	SSB7FP270102	2-1546973-7
11.500	26	SSB7FP260102	2-1546973-6
11.062	25	SSB7FP250102	2-1546973-5
10.625	24	SSB7FP240102	2-1546973-4
10.187	23	SSB7FP230102	2-1546973-3
9.750	22	SSB7FP220102	2-1546973-2
9.312	21	SSB7FP210102	2-1546973-1
8.875	20	SSB7FP200102	2-1546973-0
8.437	19	SSB7FP190102	1-1546973-9
8.000	18	SSB7FP180102	1-1546973-8
7.562	17	SSB7FP170102	1-1546973-7
7.125	16	SSB7FP160102	1-1546973-6
6.687	15	SSB7FP150102	1-1546973-5
6.250	14	SSB7FP140102	4-1437416-4
5.812	13	SSB7FP130102	1-1546973-3
5.375	12	SSB7FP120102	1-1546973-2
4.937	11	SSB7FP110102	1-1546973-1
4.500	10	SSB7FP100102	1-1546973-0
4.062	9	SSB7FP090102	1546973-9
3.625	8	SSB7FP080102	1546973-8
3.187	7	SSB7FP070102	1546973-7
2.750	6	SSB7FP060102	1546973-6
2.312	5	SSB7FP050102	1546973-5
1.875	4	SSB7FP04010211	9-796602-1
1.875	4	SSB7FP040102	9-796602-0
1.437	3	SSB7FP030102	1546973-3
1.000	2	SSB7FP020102	1546973-2

THIS DRAWING IS A CONTROLLED DOCUMENT.		DWN S SCHL GEL 3/3/04	Tyco Electronics Corporation Harrisburg, Pa 17105-3608		
DIMENSIONS: INCHES		CHK S YODER 3/3/04			
TOLERANCES UNLESS OTHERWISE SPECIFIED:		APVD S YODER 3/3/04	NAME SSB7FPXX0102		
0 PLC ± - 1 PLC ± - 2 PLC ± .02 3 PLC ± .010 4 PLC ± - ANGLES ± 1°		PRODUCT SPEC -	RESTRICTED TO -		
MATERIAL -		APPLICATION SPEC -	SIZE A3	CAGE CODE 00779	DRAWING NO C-9-796602-0
FINISH -		WEIGHT -	CUSTOMER DRAWING		SCALE NTS
		SHEET 1 OF 1		REV A1	