

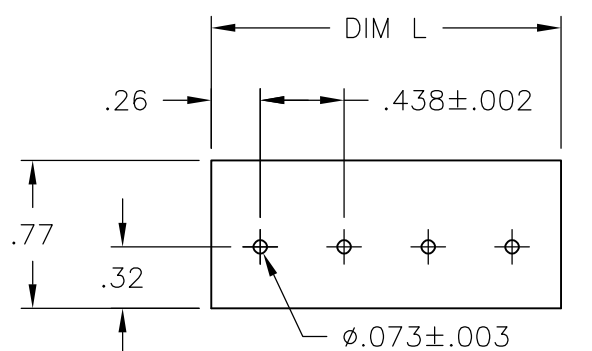
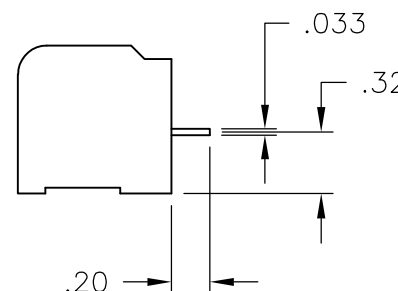
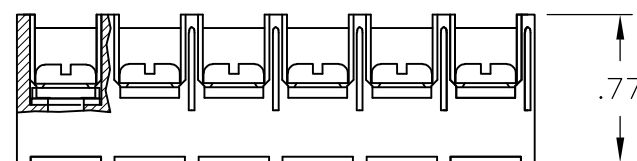
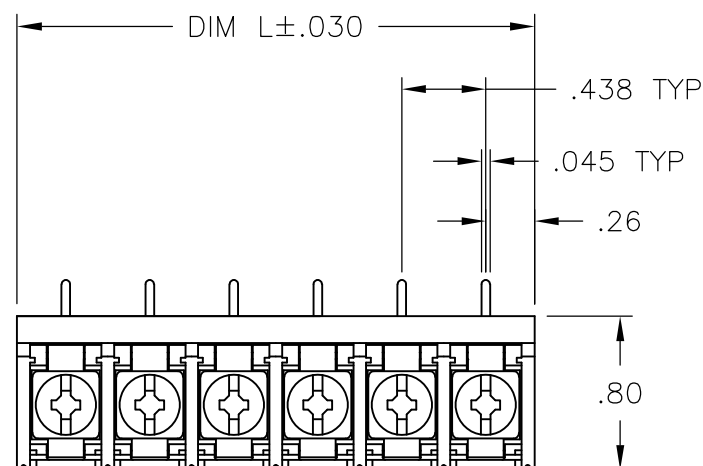
THIS DRAWING IS UNPUBLISHED. RELEASED FOR PUBLICATION
 © COPYRIGHT BY TYCO ELECTRONICS CORPORATION. ALL RIGHTS RESERVED.

LOC	DIST	REVISIONS					
FT	0	P	LTR	DESCRIPTION	DATE	DWN	APVD
			D	REVISED PER ECO-10-004812	05MAY10	HMR	CR

MATERIALS:
 HOUSING: THERMOPLASTIC, UL94V-0, BLACK.
 TERMINAL: BRIGHT TIN PLATED COPPER ALLOY.
 SCREWS: 8-32, ZINC PLATED STEEL.

ELECTRICAL:
 CURRENT RATING: 30A
 VOLTAGE RATING: 600V
 WIRE RANGE: 10-18 AWG (UL)
 10-22 AWG (CSA)

MECHANICAL:
 RECOMMENDED TORQUE: 20 IN-LB.
 OPERATING TEMP.: -40°C TO +120°C.



RECOMMENDED PCB LAYOUT

8.823	20	8PCR-20-006	2-1546566-0
8.385	19	8PCR-19-006	1-1546566-9
7.948	18	8PCR-18-006	1-1546566-8
7.510	17	8PCR-17-006	1-1546566-7
7.073	16	8PCR-16-006	1-1546566-6
6.635	15	8PCR-15-006	1-1546566-5
6.198	14	8PCR-14-006	796875-3
5.760	13	8PCR-13-006	1-1546566-3
5.323	12	8PCR-12-006	1-1546566-2
4.885	11	8PCR-11-006	796875-1
4.448	10	8PCR-10-006	5-1546159-4
4.010	9	8PCR-09-006	1546566-9
3.573	8	8PCR-08-006	4-1437657-3
3.135	7	8PCR-07-006	5-1546159-2
2.698	6	8PCR-06-006	3-1437657-7
2.260	5	8PCR-05-006	3-1437657-3
1.823	4	8PCR-04-006	3-1437657-1
1.385	3	8PCR-03-006	2-1437657-8
.948	2	8PCR-02-006	2-1437657-2
DIM L	NO OF POS	TE NUMBER	TE NUMBER

THIS DRAWING IS A CONTROLLED DOCUMENT.		DWN S SCHLEGEL 10/25/06	Tyco Electronics Corporation Harrisburg, PA 17105-3608	
DIMENSIONS: INCHES		CHK S. YODER 10/25/06	NAME	
TOLERANCES UNLESS OTHERWISE SPECIFIED:		APVD S. YODER 10/25/06	8PCR-XX-006 ASSEMBLY	
0 PLC ± -		PRODUCT SPEC	SIZE CAGE CODE DRAWING NO RESTRICTED TO	
1 PLC ± -		APPLICATION SPEC	A3 00779 C-2-1437657-2	
2 PLC ± .01		WEIGHT -	SCALE 1:1 SHEET 1 OF 1 REV D	
3 PLC ± .005		CUSTOMER DRAWING		
4 PLC ± -				
ANGLES ± 1°				
MATERIAL -				
FINISH -				