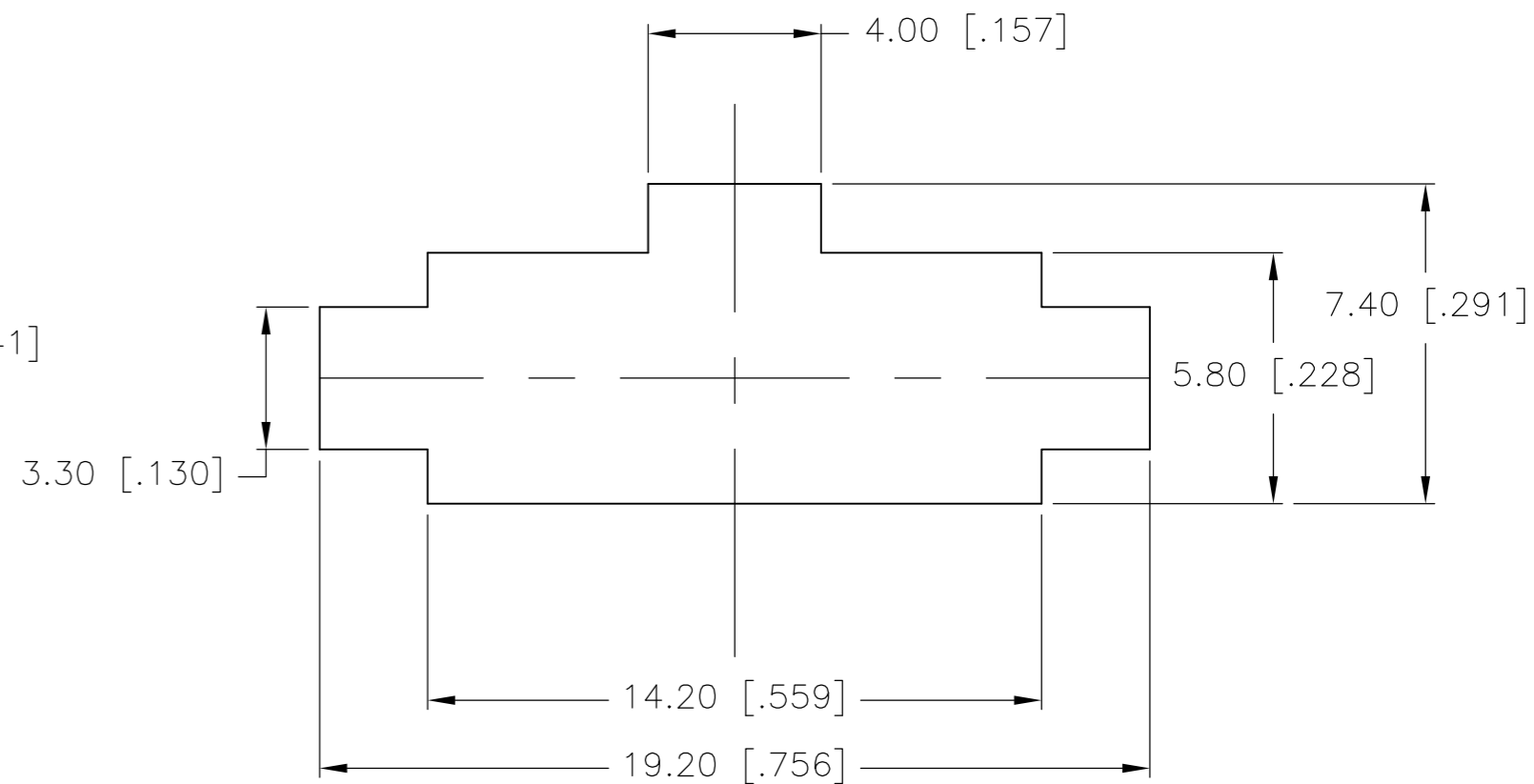
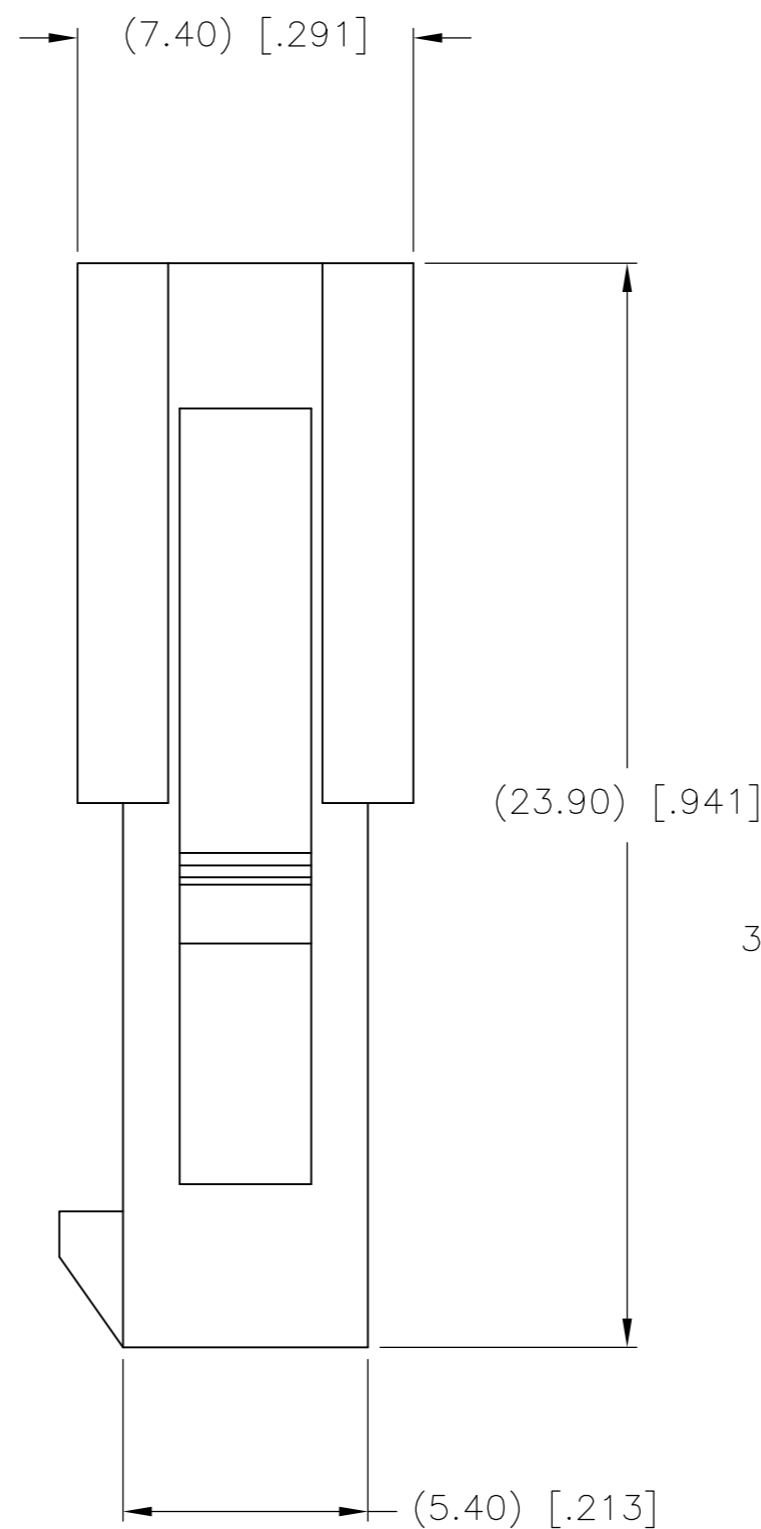
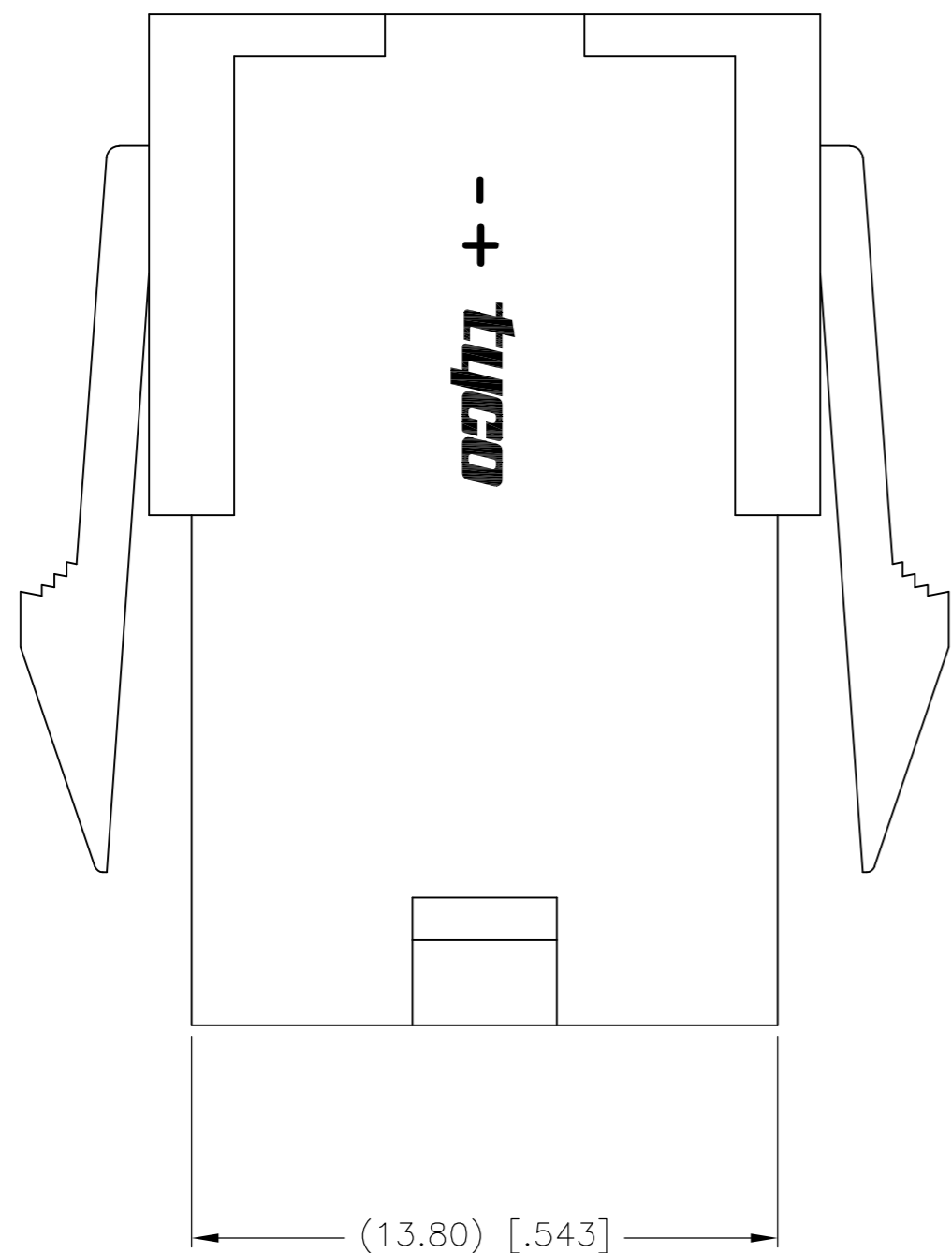
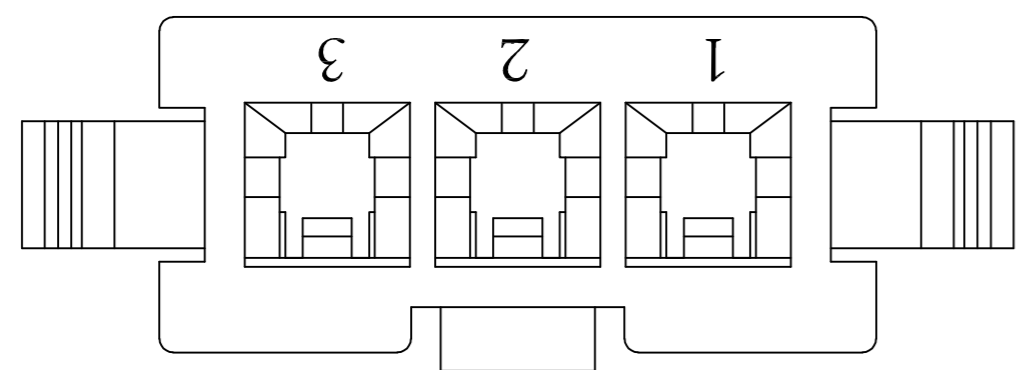


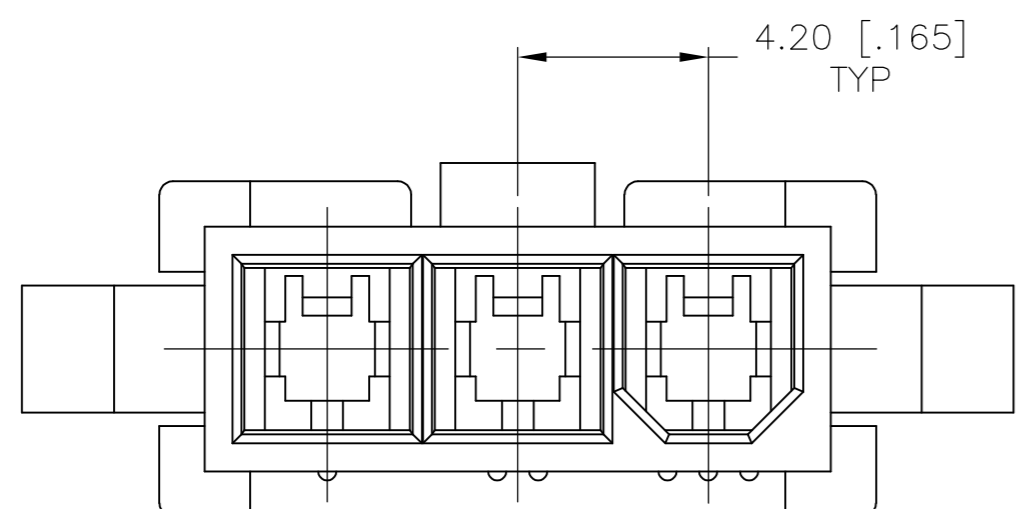
THIS DRAWING IS UNPUBLISHED. RELEASED FOR PUBLICATION
 © COPYRIGHT BY TYCO ELECTRONICS CORPORATION. ALL RIGHTS RESERVED.

LOC	DIST	REVISIONS			
P	LTR	DESCRIPTION	DATE	DWN	APVD
CM	00	A	WR-08-15	10APR2008	KW CC



RECOMMENDED PANEL CUT-OUT
 2.00 [.079] MAX THICK PANEL

- PANEL MUST BE PUNCHED SO THAT THE HOUSING ENTERS THE PANEL IN THE SAME DIRECTION AS THE PUNCH.
- GLOW WIRE APPROVED, CONTACT TYCO ELECTRONICS ENGINEERING FOR SPECIFICATION.



2029110-3
 PART NO.

THIS DRAWING IS A CONTROLLED DOCUMENT.		DWN K. WHITAKER 10APR2008	Tyco Electronics Corporation Harrisburg, PA 17105-3608	
DIMENSIONS: mm [INCHES]		CHK C. CASH 10APR2008	NAME PLUG,3 POS, VAL-U-LOK(TM)	
TOLERANCES UNLESS OTHERWISE SPECIFIED: 0 PLC ± 1 PLC ± 2 PLC ± 0.13 [.005] 3 PLC ± 4 PLC ± ANGLES ± 0°30'		APVD C. CASH 10APR2008	SIZE A2	
MATERIAL NYLON 66 UL94V-2		PRODUCT SPEC	CAGE CODE 00779	DRAWING NO C=2029110
FINISH		APPLICATION SPEC	RESTRICTED TO	
METRIC		WEIGHT	SCALE 6:1	SHEET 1 of 1
		CUSTOMER DRAWING	REV A	