

6

5

4

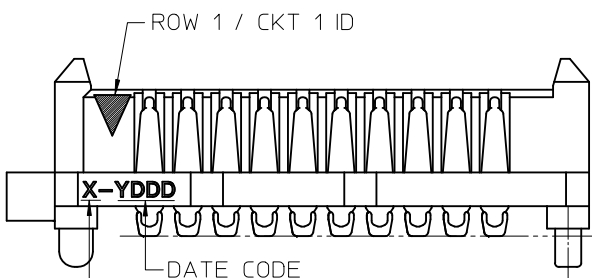
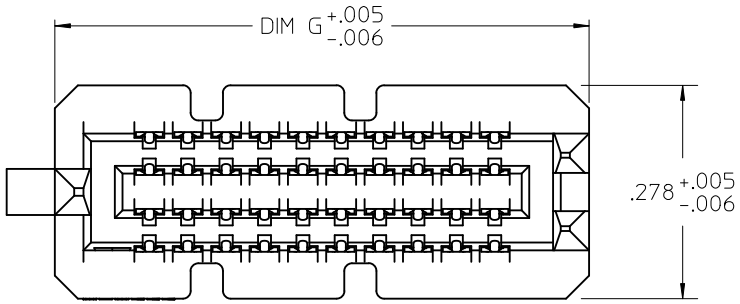
3

2

1

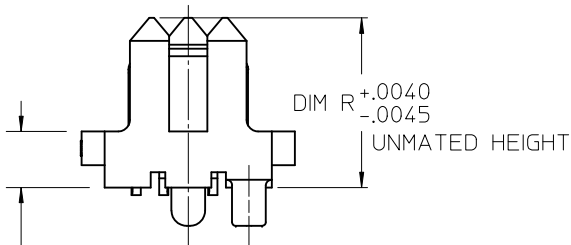
NOTES:

- 1. MATERIALS: HOUSING: LCP, UL94V-0, BLACK
CONTACTS: COPPER ALLOY
SOLDER CHARGE: SEE CHART
- 2. FINISH: ALL OPTIONS - SELECT GOLD IN CONTACT AREA: 30 MI MIN
OPTIONS 2.0 & 2.5: SELECT GOLD FLASH IN TAIL, 7 MI MIN
OPTIONS 3.0 THRU 7.0: SELECT TIN IN TAIL, 100 MI MIN
ALL OPTIONS - OVER NICKEL
- 3. PRODUCT SPECIFICATION: PS-45970-001
- 4. PACKAGING SPECIFICATION: PK-45970-002
- 5. MATES WITH SEARAY RECPT ASSEMBLY 46557
- 6. APPLICATION SPECIFICATION: AS-45970-001
- 7. COSMETIC SPECIFICATION: PS-45499-002 CLASS B
- 8. PART STATUS: CONTACT MOLEX

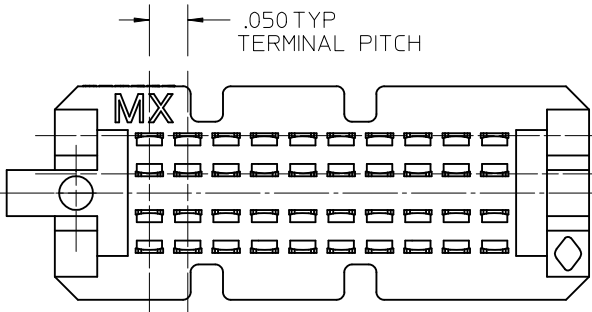


LEAD CODE:
1 = TIN
2 = TIN / LEAD

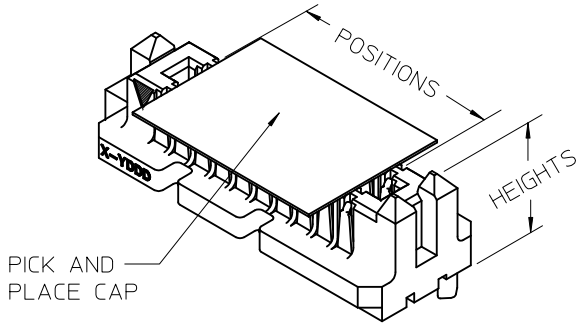
SEE TABLE
ACROSS ALL
SOLDER
CHARGES



DIM P
REF ONLY
MATED STACK
HEIGHT
(MILLIMETERS)



.050 TYP
TERMINAL PITCH



PICK AND
PLACE CAP

| POSITIONS | DIM G | |
|-----------|-------|------|
| 10 | .696 | .006 |
| 15 | .946 | .006 |
| 20 | 1.196 | .006 |
| 25 | 1.446 | .006 |
| 30 | 1.696 | .006 |
| 35 | 1.946 | .006 |
| 40 | 2.196 | .006 |
| 45 | 2.446 | .009 |
| 50 | 2.696 | .009 |

| | | |
|---------|---------------------------|-------------|
| REVISED | EC NO: UCP2011-0008 | DESCRIPTION |
| | DRWN: TREGORI 2010/07/01 | |
| | CHKD: JCOMERCI 2007/05/17 | |
| | APPR: JCOMERCI 2010/07/13 | |
| | J | |

| GENERAL TOLERANCES (UNLESS SPECIFIED) | |
|--|--------|
| mm | INCH |
| 4 PLACES ± --- | ± --- |
| 3 PLACES ± --- | ± .005 |
| 2 PLACES ± --- | ± --- |
| 1 PLACE ± --- | ± --- |
| ANGULAR ± 1/2° | |
| DRAFT WHERE APPLICABLE MUST REMAIN WITHIN DIMENSIONS | |

| DIMENSION STYLE | |
|-----------------|------------|
| INCH ONLY | |
| DRAWN BY | DATE |
| TGREGORI | 2007/05/17 |
| CHECKED BY | DATE |
| JCOMERCI | 2007/05/17 |
| APPROVED BY | DATE |
| JCOMERCI | 2010/03/05 |
| MATERIAL NO. | |
| SEE CHART | |
| SIZE | A |

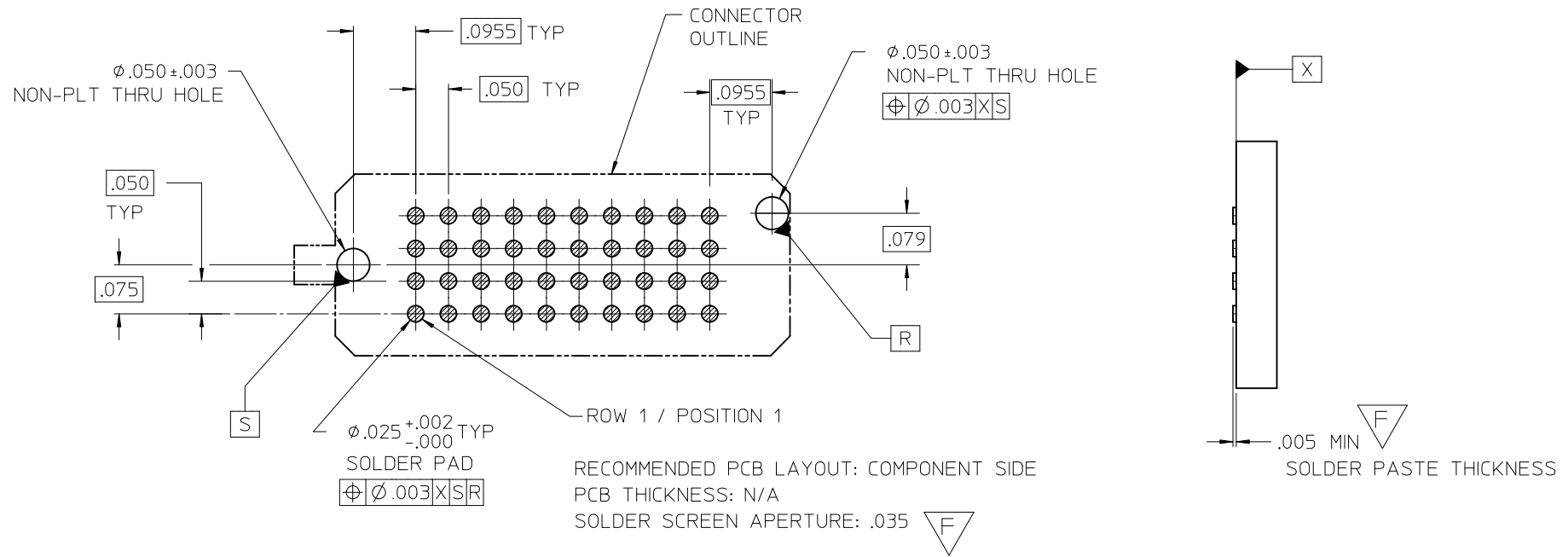
| | | | | | |
|--|-----|--------------|------|-----------|------------------------|
| SCALE | 4:1 | DESIGN UNITS | INCH | | THIRD ANGLE PROJECTION |
| SEARAY SLIM PLUG ASSEMBLY .050 PITCH | | | | | |
| MOLEX INCORPORATED | | | | | |
| DOCUMENT NO. | | | | SHEET NO. | |
| SD-46556-001 | | | | 1 OF 4 | |

5

4

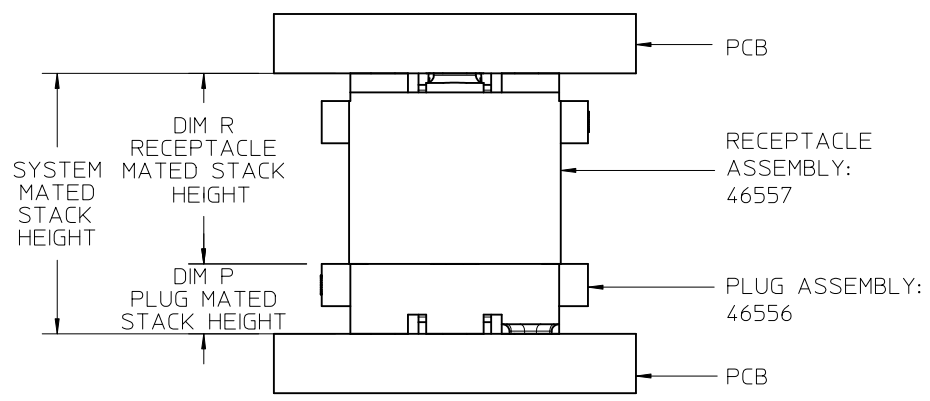
3

2



| | | DIM R RECEPTACLE STACK HEIGHT | | | | | |
|----------------------------|-----|----------------------------------|------|------|------|------|------|
| | | MM | 5.0 | 6.0 | 6.5 | 7.5 | 8.0 |
| DIM P PLUG STACK HEIGHT | 2.0 | 7.0 | 8.0 | 8.5 | 9.5 | 10.0 | 11.0 |
| | 3.0 | 8.0 | 9.0 | 9.5 | 10.5 | 11.0 | 11.5 |
| | 3.5 | 8.5 | 9.5 | 10.0 | 11.0 | 11.5 | 12.0 |
| | 2.5 | 7.5 | 8.5 | 9.0 | 10.0 | 10.5 | 11.0 |
| | 4.5 | 9.5 | 10.5 | 11.0 | 12.0 | 12.5 | 13.0 |
| | 5.0 | 10.0 | 11.0 | 11.5 | 12.5 | 13.0 | 13.5 |
| | 7.0 | 12.0 | 13.0 | 13.5 | 14.5 | 15.0 | 15.5 |

STACK HEIGHTS GIVEN IN MM FOR REF ONLY



| | | | | | | | | |
|--|---------------------------------------|-------|--|--------------------------|-------------------------------------|---|------------------------|--|
| SEE SHEET 1 EC NO: UCP2011-0008 DRWN: TGREGOR I 2010/07/01 CHKD: JCOMERC I 2007/05/17 APPR: JCOMERC I 2010/07/13 DESCRIPTION REV | GENERAL TOLERANCES (UNLESS SPECIFIED) | | DIMENSION STYLE INCH ONLY | | SCALE 4:1 | DESIGN UNITS INCH | THIRD ANGLE PROJECTION | |
| | | mm | INCH | DRAWN BY TGREGOR I | DATE 2007/05/17 | TITLE SEARAY SLIM PLUG ASSEMBLY .050 PITCH | | |
| | 4 PLACES | ± --- | ± --- | CHECKED BY JCOMERC I | DATE 2007/05/17 | | | |
| | 3 PLACES | ± --- | ± .005 | APPROVED BY JCOMERC I | DATE 2010/03/05 | MOLEX MOLEX INCORPORATED | | |
| 2 PLACES | ± --- | ± --- | MATERIAL NO. SEE CHART | | DOCUMENT NO. SD-46556-001 | SHEET NO. 2 OF 4 | | |
| 1 PLACE | ± --- | ± --- | DRAFT WHERE APPLICABLE MUST REMAIN WITHIN DIMENSIONS | | | | | |
| ANGULAR ±1/2° | | | | | | THIS DRAWING CONTAINS INFORMATION THAT IS PROPRIETARY TO MOLEX INCORPORATED AND SHOULD NOT BE USED WITHOUT WRITTEN PERMISSION | | |

| | 6 | 5 | 4 | 3 | 2 | 1 | |
|------------------------------|-------------|-------------|-------------|-------------|-------------|-------------|-------------|
| DIM P | 2.0 MM | 3.0 MM | 3.5 MM | 2.5 MM | 4.5 MM | 5.0 MM | 7.0 MM |
| DIM R: HOUSING HEIGHT: | .221 | .260 | .280 | .241 | .319 | .339 | .418 |
| D POSITIONS | MATERIAL NO | MATERIAL NO | MATERIAL NO | MATERIAL NO | MATERIAL NO | MATERIAL NO | MATERIAL NO |
| 10 | 46556-1145 | 46556-1245 | 46556-1345 | 46556-1445 | 46556-1545 | 46556-1645 | 46556-1745 |
| 20 | 46556-2145 | 46556-2245 | 46556-2345 | 46556-2445 | 46556-2545 | 46556-2645 | 46556-2745 |
| 30 | 46556-3145 | 46556-3245 | 46556-3345 | 46556-3445 | 46556-3545 | 46556-3645 | 46556-3745 |
| 40 | 46556-4145 | 46556-4245 | 46556-4345 | 46556-4445 | 46556-4545 | 46556-4645 | 46556-4745 |
| 50 | 46556-5145 | 46556-5245 | 46556-5345 | 46556-5445 | 46556-5545 | 46556-5645 | 46556-5745 |
| C 15 | 46556-6145 | 46556-6245 | 46556-6345 | 46556-6445 | 46556-6545 | 46556-6645 | 46556-6745 |
| 25 | 46556-7145 | 46556-7245 | 46556-7345 | 46556-7445 | 46556-7545 | 46556-7645 | 46556-7745 |
| 35 | 46556-8145 | 46556-8245 | 46556-8345 | 46556-8445 | 46556-8545 | 46556-8645 | 46556-8745 |
| 45 | 46556-9145 | 46556-9245 | 46556-9345 | 46556-9445 | 46556-9545 | 46556-9645 | 46556-974 |


NOTES:
1. THIS SHEET CONTAINS THE FOLLOWING OPTIONS
SOLDER CHARGE: TIN

| | | | | | | | | | | |
|--|--------------------|--|---------------|-------------------------------------|--|---------------------|--|---------------------------|--|--|
| SEE SHEET 1 EC NO: UCP2011-0008 DRWN: TGREGOR I 2010/07/01 CHKD: JCOMERC I 2007/05/17 APPR: JCOMERC I 2010/07/13 | DESCRIPTION REV | GENERAL TOLERANCES (UNLESS SPECIFIED) | | DIMENSION STYLE INCH ONLY | | SCALE 1:1 | DESIGN UNITS INCH | THIRD ANGLE PROJECTION | | |
| | | | mm | INCH | DRAWN BY TGREGOR I | DATE 2007/05/17 | TITLE SEARAY SLIM PLUG ASSEMBLY .050 PITCH | | | |
| | | 4 PLACES | ± --- | ± --- | CHECKED BY JCOMERC I | DATE 2007/05/17 | | | | |
| | | 3 PLACES | ± --- | ± .005 | APPROVED BY JCOMERC I | | DATE 2010/03/05 | MOLEX INCORPORATED | | |
| | | 2 PLACES | ± --- | ± --- | MATERIAL NO. SEE CHART | | DOCUMENT NO. SD-46556-001 | | | |
| 1 PLACE | ± --- | ± --- | ANGULAR ±1/2° | | THIS DRAWING CONTAINS INFORMATION THAT IS PROPRIETARY TO MOLEX INCORPORATED AND SHOULD NOT BE USED WITHOUT WRITTEN PERMISSION | | | | | |

DRAFT WHERE APPLICABLE
MUST REMAIN
WITHIN DIMENSIONS

| | 6 | 5 | 4 | 3 | 2 | 1 | |
|------------------------------|-------------|-------------|-------------|-------------|-------------|-------------|-------------|
| DIM P | 2.0 MM | 3.0 MM | 3.5 MM | 2.5 MM | 4.5 MM | 5.0 MM | 7.0 MM |
| DIM R: HOUSING HEIGHT: | .221 | .260 | .280 | .241 | .319 | .339 | .418 |
| D POSITIONS | MATERIAL NO | MATERIAL NO | MATERIAL NO | MATERIAL NO | MATERIAL NO | MATERIAL NO | MATERIAL NO |
| 10 | 46556-1147 | 46556-1247 | 46556-1347 | 46556-1447 | 46556-1547 | 46556-1647 | 46556-1747 |
| 20 | 46556-2147 | 46556-2247 | 46556-2347 | 46556-2447 | 46556-2547 | 46556-2647 | 46556-2747 |
| 30 | 46556-3147 | 46556-3247 | 46556-3347 | 46556-3447 | 46556-3547 | 46556-3647 | 46556-3747 |
| 40 | 46556-4147 | 46556-4247 | 46556-4347 | 46556-4447 | 46556-4547 | 46556-4647 | 46556-4747 |
| 50 | 46556-5147 | 46556-5247 | 46556-5347 | 46556-5447 | 46556-5547 | 46556-5647 | 46556-5747 |
| C 15 | 46556-6147 | 46556-6247 | 46556-6347 | 46556-6447 | 46556-6547 | 46556-6647 | 46556-6747 |
| 25 | 46556-7147 | 46556-7247 | 46556-7347 | 46556-7447 | 46556-7547 | 46556-7647 | 46556-7747 |
| 35 | 46556-8147 | 46556-8247 | 46556-8347 | 46556-8447 | 46556-8547 | 46556-8647 | 46556-8747 |
| 45 | 46556-9147 | 46556-9247 | 46556-9347 | 46556-9447 | 46556-9547 | 46556-9647 | 46556-9747 |

NOTES:
1. THIS SHEET CONTAINS THE FOLLOWING OPTIONS
SOLDER CHARGE: TIN / LEAD

| | | | | | | | | | | | |
|--|--------------------|---------------------------------------|------------------|-------------------------------------|--|---------------------|--|---|--|--|--|
| SEE SHEET 1 EC NO: UCP2011-0008 DRWN: TGREGOR I 2010/07/01 CHKD: JCOMERC I 2007/05/17 APPR: JCOMERC I 2010/07/13 | DESCRIPTION REV | GENERAL TOLERANCES (UNLESS SPECIFIED) | | DIMENSION STYLE INCH ONLY | | SCALE 1:1 | DESIGN UNITS INCH | THIRD ANGLE PROJECTION | | | |
| | | | mm | INCH | DRAWN BY TGREGOR I | DATE 2007/05/17 | TITLE SEARAY SLIM PLUG ASSEMBLY .050 PITCH | | | | |
| | | 4 PLACES | ± --- | ± --- | CHECKED BY JCOMERC I | DATE 2007/05/17 | | | | | |
| | | 3 PLACES | ± --- | ± .005 | APPROVED BY JCOMERC I | | DATE 2010/03/05 |  MOLEX INCORPORATED DOCUMENT NO. SD-46556-001 | | | |
| | | 2 PLACES | ± --- | ± --- | MATERIAL NO. | | DATE | | | | |
| 1 PLACE | ± --- | ± --- | ANGULAR ±1/2° | | SHEET NO. 4 OF 4 | | | | | | |
| DRAFT WHERE APPLICABLE MUST REMAIN WITHIN DIMENSIONS | | | SIZE A | | THIS DRAWING CONTAINS INFORMATION THAT IS PROPRIETARY TO MOLEX INCORPORATED AND SHOULD NOT BE USED WITHOUT WRITTEN PERMISSION | | | | | | |