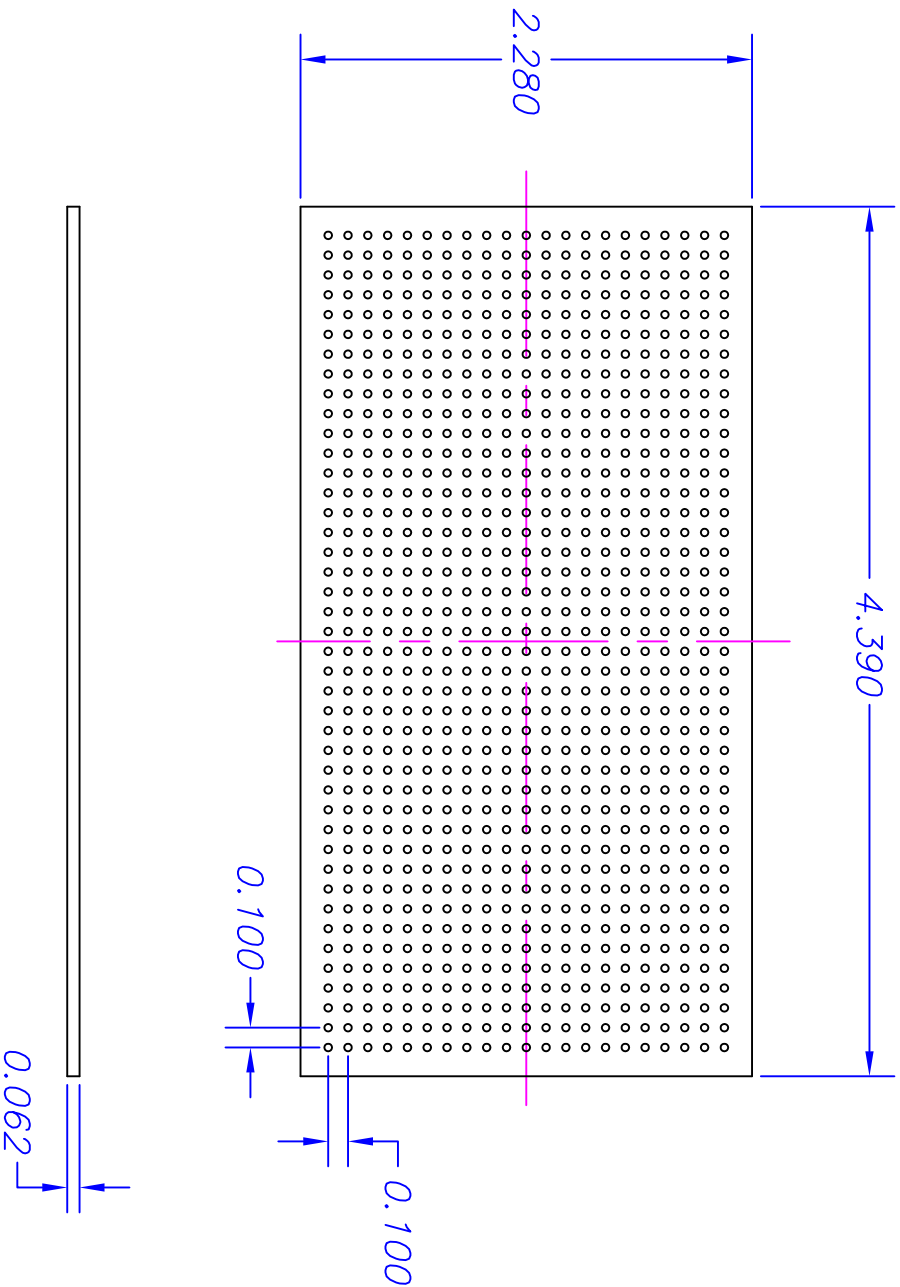


# SERPAC Electronics Enclosures

## CIRCUIT BOARD 373/473

NO.	REVISION	DATE
A	Update dwg G & C in 1 dwg.	4/02



- NOTES:
1. GRID BOARD: 0.038 $\phi$  HOLES, 0.100 CENTER TO CENTER SPACING
  2. MATERIAL: G-10 GLASS EPOXY (p/n 3XX)
  3. MATERIAL: CLAD BOARD-2 OZ., 2/0 COPPER FOIL (p/n 4XX) -No Holes.

04-2002.

ALL DIMENSIONS F.005