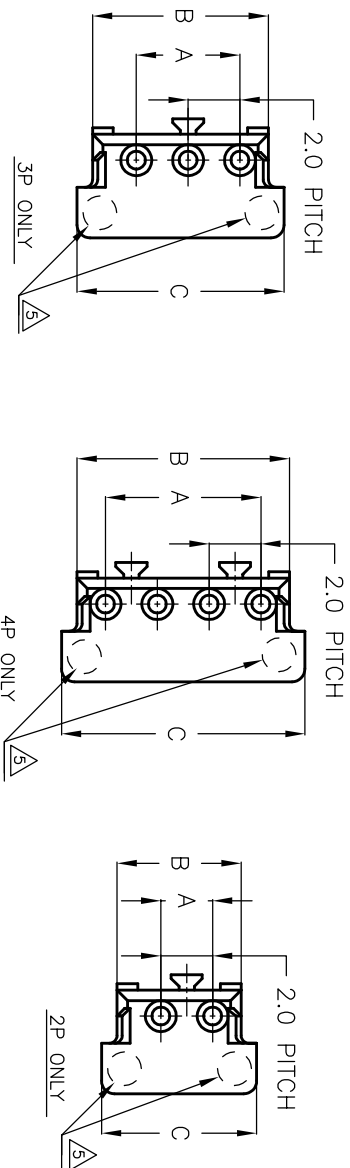
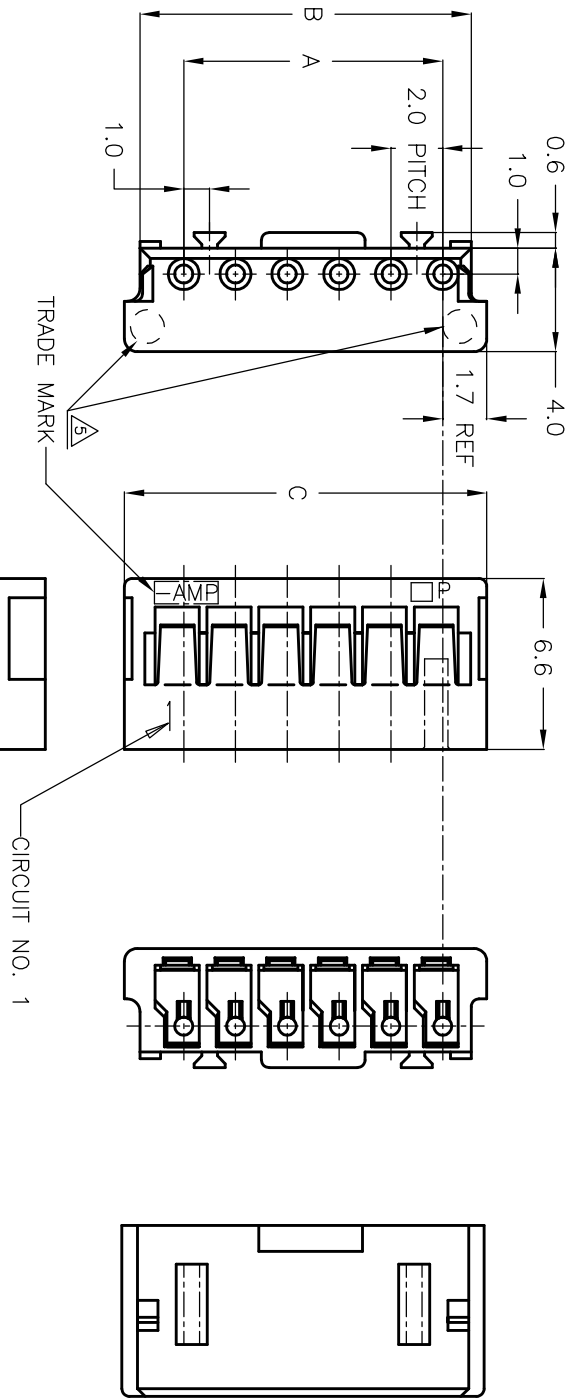


THIS INFORMATION IS CONFIDENTIAL AND PROPRIETARY TO TYCO ELECTRONICS CORPORATION AND ITS WORLDWIDE SUBSIDIARIES AND AFFILIATES. IT MAY NOT BE DISCLOSED TO ANYONE, OTHER THAN TYCO ELECTRONICS PERSONNEL, WITHOUT WRITTEN AUTHORIZATION FROM TYCO ELECTRONICS CORPORATION, HARRISBURG, PENNSYLVANIA USA.



- NOTES:
- 1 MATERIAL : 66 NYLON (UL94V-0)
 - 2. PRODUCT SPEC.: 108-5408
 - 3. APPLICATION SPEC.: 114-5179
 - 4 7-179228-3 WAS OBSOLETE.
 - 5 CAVITY NUMBER LOCATED. (OPTIONAL)

7-179228-5	5-179228-5	3-179228-5	1-179228-5	15	28	30.8	32.0
7- ∇ -4	5- ∇ -4	3- ∇ -4	1- ∇ -4	14	26	28.8	30.0
7- ∇ -3	5- ∇ -3	3- ∇ -3	1- ∇ -3	13	24	26.8	28.0
7- ∇ -2	5- ∇ -2	3- ∇ -2	1- ∇ -2	12	22	24.8	26.0
7- ∇ -1	5- ∇ -1	3- ∇ -1	1- ∇ -1	11	20	22.8	24.0
7- ∇ -0	5- ∇ -0	3- ∇ -0	1- ∇ -0	10	18	20.8	22.0
6- ∇ -9	4- ∇ -9	2- ∇ -9		9	16	18.8	20.0
6- ∇ -8	4- ∇ -8	2- ∇ -8		8	14	16.8	18.0
6- ∇ -7	4- ∇ -7	2- ∇ -7		7	12	14.8	16.0
6- ∇ -6	4- ∇ -6	2- ∇ -6		6	10	12.8	14.0
6- ∇ -5	4- ∇ -5	2- ∇ -5		5	8	10.8	12.0
6- ∇ -4	4- ∇ -4	2- ∇ -4		4	6	8.8	10.0
6- ∇ -3	4- ∇ -3	2- ∇ -3		3	4	6.8	8.0
6-179228-2	4-179228-2	2-179228-2	179228-2	2	2	4.8	6.0

PART NUMBER	BLACK	YELLOW	BLUE	NATURAL	POS	A	B	C
179228-2					2	2	4.8	6.0

DMN 12NOV1993
CHK T.FURUYA
APVD S.KUBOUCHI
NAME S.KUBOUCHI

MATERIAL SEE NOTE 1
HEAT TREAT

CRIMP TYPE II RECEPTACLE HOUSING (AMP CT CONNECTOR 2mm PITCH)

TYCO ELECTRONICS
Shanghai, P.R.China, 200233

SCALE	SIZE	DRAWING NO	SHEET	OF	REV
NTS	A3	C-179228	1	1	B1

LOC	ES	DIST	00
00	00	00	00

GENERAL TOLERANCE	0$\phi$$\le$ 10	10$\phi$$\le$ 30	30$\phi$$\le$ 100	100$\phi$$\le$ 1.00	1.00$\phi$$\le$ 10	10$\phi$$\le$ 30	30$\phi$$\le$ 100	100$\phi$$\le$ 1.00	1.00$\phi$$\le$ 10	10$\phi$$\le$ 30	30$\phi$$\le$ 100	100$\phi$$\le$ 1.00
	± 0.2	± 0.3	± 0.4	± 0.5	± 0.7	± 1.0	± 1.5	± 2.0	± 3.0	± 4.0	± 5.0	± 7.0

REVISION RECORD	REVISED ECR-08-032323	REVISED ECR-08-032323	DATE	DMN	APVD	DATE	DMN	APVD
P	B1	19DEC08	D.S	S.Y				

REVISION RECORD	REVISED ECR-08-032323	REVISED ECR-08-032323	DATE	DMN	APVD	DATE	DMN	APVD
P	B1	19DEC08	D.S	S.Y				