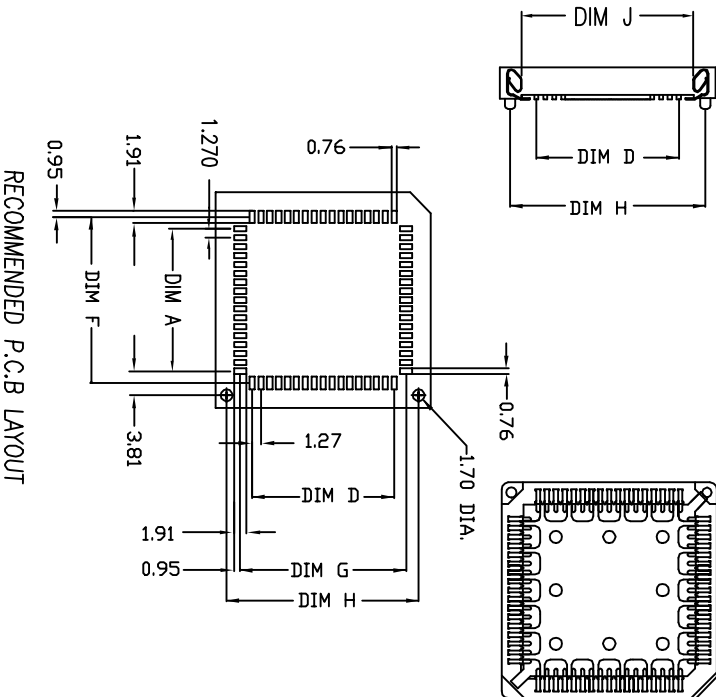
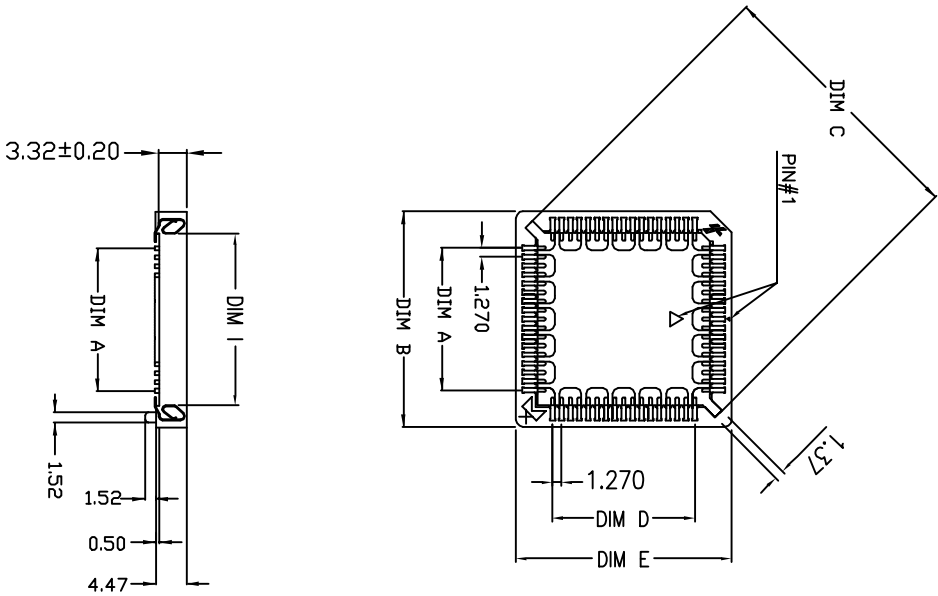


PRODUCT NO.  
SEE NOTE



mat'l. code		ecn no.		dr		date		tolerances unless otherwise specified		CUSTOMER COPY		title	
X	T60008	AC	D2/08/96	linear	.XX	±0.25							PLCC SMT SOCKET
Y	T10136	JH	03/18/01		.XXX	±0.20							PLCC-XXP-T-SMT
AA	T03-0452	J.C	10/15/03	angles	0°	±2°							
AB	T05-0017	W.L	01/24/05	dr	JASON HSU	3/16/00							
AC	T05-0114	W.L	05/09/05	engr	JASON HSU	3/16/00							
AD	T05-0212	W.L	09/21/05	chr	J. TSAO	3/16/00							
AE	T06-0070	J.H	05/08/06	ppd	L. WANG	3/16/00							
sheet	revision	AE	AE	AE	AE	AE							
index	sheet	1	2	3	4	5							

form no. 7530-001-103

2

3

4

code code  
24180

product family  
PLCC

size dwg no  
69802

code  
TWN

sheet  
1 of



TABLE I

No. of Contact	DIM. A ±0.20	DIM. B ±0.20	DIM. C ±0.20	DIM. D ±0.20	DIM. E Max.	DIM. F ±0.10	DIM. G ±0.10	DIM. H ±0.20	DIM. I ±0.20	DIM. J ±0.20
20	5.08	15.24	16.70	5.08	15.24	8.48	8.48	12.70		9.40
28	7.62	17.78	20.30	7.62	17.78	11.02	11.02	15.24		11.94
32	7.62	17.78	22.50	10.16	20.32	11.02	13.56	17.78	11.94	14.48
44	12.70	22.86	27.50	12.70	22.86	16.10	16.10	20.32		17.02
52	15.24	25.40	31.10	15.24	25.40	18.64	18.64	22.86		19.56
68	20.32	30.82	38.30	20.32	30.82	23.27	23.27	27.94		24.64
84	25.40	35.90	45.50	25.40	35.90	28.80	28.80	33.02		29.72

TABLE II

PART NO.	WITH POLARIZING PEGS	PACKAGING BY PVC TUBE	PACKAGING BY TAPE & REEL	MCK PART NO.
69802-0XX	✓	✓		PLCC-XXP-T-SMT-P
69802-1XX		✓		PLCC-XXP-T-SMT
69802-4XX			✓	PLCC-XXP-T-SMT-TR
69802-0XXPT	✓	✓		PLCC-XXP-T-SMT-P-PT
69802-1XXPT		✓		PLCC-XXP-T-SMT-PT
69802-4XXPT			✓	PLCC-XXP-T-SMT-TR-PT
69802-0XXLF	✓	✓		PLCC-XXP-T-SMT-P-LF
69802-1XXLF		✓		PLCC-XXP-T-SMT-LF
69802-4XXLF			✓	PLCC-XXP-T-SMT-TR-LF

NOTE:

ORDERING DATA: 69802 - X XX XX

LF: Lead Free  
 PT: PURE TIN PLATED.  
 BLANK; TIN/LEAD PLATED.  
 NO OF CONTACTS  
 SEE TABLE II.

mat'l. code		tolerances unless otherwise specified		CUSTOMER COPY		<b>Electronics</b> www.fciconnect.com	
itr	ecn no	dr	date	lineur	projection	title	
AE				.XX ±0.25	mm	PLCC SMT SOCKET	
				.XXX ±0.20	mm	PLCC-XXP-T-SMT	
				0° ±2°	mm		
				dr JASON HSU	3/16/00	product family	PLCC
				enfr JASON HSU	3/16/00	size dwg no	69802
				chr J. TSAO	3/16/00	code	TWIN
				dppd L. WANG	3/16/00	sheet	2 of
sheet	revision						
Index	sheet						

cage code  
24180

**Specification:**

1) Material :

1-1 Housing : PPS,UL94V-0 Color in Brown.  
Plating : 150u" Tin/Lead or Pure Tin Min. Over 40u" Nickel Min.  
Contact : Copper Alloy.

2) Electrical :

Rated Voltage : 120V AC/DC  
Current Rating : 1.0A AC/DC  
Contact Resistance : 20mΩ Max.  
Insulation Resistance : 10000MΩ min.  
Withstanding Voltage : 600V AC(RMS) 1 minute

3) Mechanical:

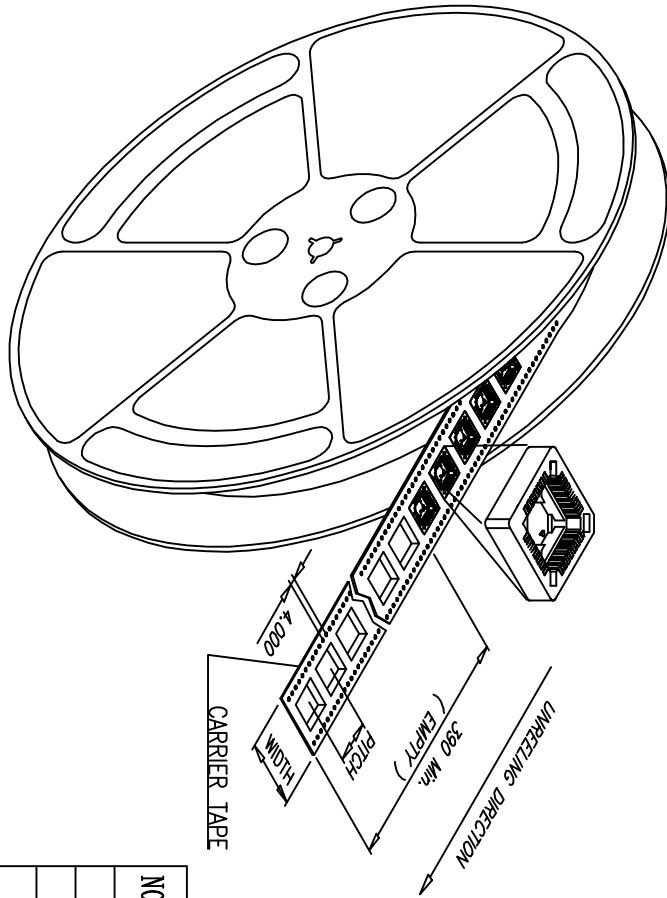
Contact Retention: 283g min.  
Insertion Force : 13 lb Max. (20P) MAX.  
15 lb Max. (28P)  
15 lb Max. (32P)  
19 lb Max. (44P)  
22 lb Max. (52P)  
26 lb Max. (68P)  
33 lb Max. (84P)  
Withdrawal Force : 1.1 lb min. (20P) MIN.  
1.1 lb Max. (28P)  
1.5 lb Max. (32P)  
2.0 lb Max. (44P)  
3.5 lb Max. (52P)  
4.0 lb Max. (68P)  
4.5 lb Max. (84P)

4) Environmental :

Operating Temperature Range : -55°C ~ +125°C

5) MANUFACTURING PROCESS COMPATIBILITY: THE HOUSING WILL WITHSTAND EXPOSURE TO 245°C PEAK TEMPERATURE FOR 5 SECOND IN A IR REFLOW APPLICATION.

mat'l. code		tolerances unless otherwise specified		CUSTOMER COPY		title	
ltr	ecr no	dr	date	linear	projection	FCI	Electronics
AE				.XX ±0.25		www.fciconnect.com	
				.XXX ±0.20			PLCC SMT SOCKET
				0° ±2°	mm		PLCC-XXP-T-SMT
				dr JASON HSU 3/16/00	scale		
				engr JASON HSU 3/16/00			
				chr J. TSAO 3/16/00			
				appd L. WANG 3/16/00	N/A		
sheet	revision						product family
index	sheet						PLCC
							size dwg no
							69802
							code
							TWN
							sheet
							3 of



NO. OF PIN.	WIDTH	PITCH	PCS/REEL	REEL/CARTON	TOTAL (PCS)
20P	24.0	24.00	470	12	5640
28P	32.0	24.00	390	10	3900
32P	32.0	24.00	390	10	3900
44P	44.0	32.00	250	8	2000
52P	44.0	32.00	250	8	2000
68P	44.0	36.00	220	8	1760
84P	56.0	40.00	200	6	1200

\* REEL DIAMETER:  $\phi 13$  in"

mat'l. code		tolerances unless otherwise specified		CUSTOMER COPY		title	
ltr	ecn no	dr	date	linear	projection	product family	code
AE				.XX $\pm 0.25$		PLCC	TWIN
				.XXX $\pm 0.20$		PLCC-XXP-T-SMT-TR	sheet
				angles 0° $\pm 2^\circ$	mm	PLCC	4 of
				dr JASON HSU 3/16/00	scale		
				enfr JASON HSU 3/16/00	N/A		
				chr J. TSAO 3/16/00			
				apprd L. WANG 3/16/00			
sheet index	revision	sheet					

form no. 7530-001-103

1

2

3

4

code code  
24180

form no. 7530-001-103

1

2

3

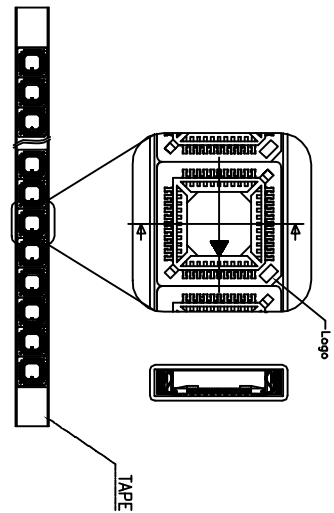
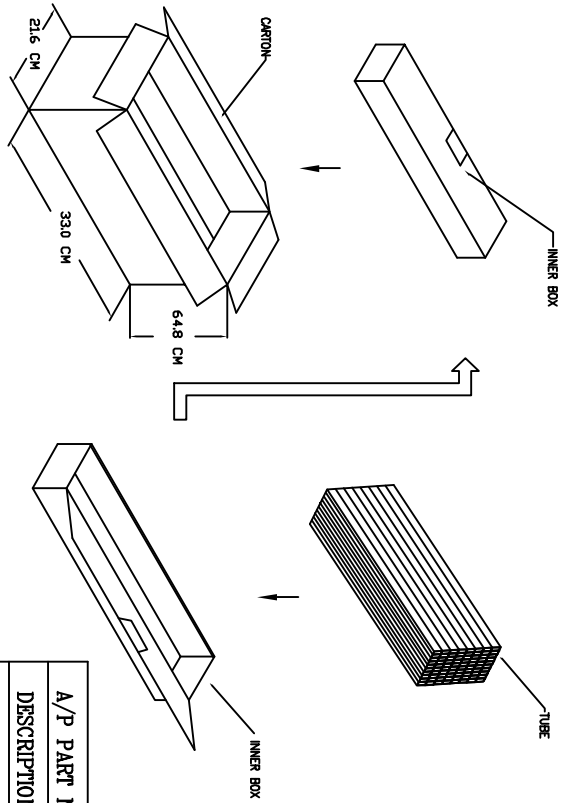
4

1

2

3

4



A/P PART NO.	69802-X20X	69802-X28X	69802-X32X	69802-X44X	69802-X52X	69802-X68X	69802-X84X
DESCRIPTION	20P	28P	32P	44P	52P	68P	84P
PCS/TUBE	37	32	28	25	23	18	16
PCS/INNER BOX	1110	832	728	500	460	270	224
INNER BOX/CARTON	10	10	10	10	10	10	10
TOTAL (PCS)	11100	8320	7280	5000	4600	2700	2240
N.W	12.5 kg	10.5 kg	10.0 kg	8.5 kg	8.0 kg	7.5 kg	7.0 kg
G.W	20.0 kg	18.5 kg	18.0 kg	17.0 kg	16.5 kg	16.0 kg	15.5 kg

mod'l. code		tolerances unless otherwise specified		CUSTOMER COPY		title	
tr	ecn no	dr	date	linear	projection	product family	PLCC SMT SOCKET
AE				.X ±0.38	mm	PLCC	PLCC-SMT-SOCKET
				.XX ±0.25		PLCC	
				.XXX ±0.20			
				0° ±2°			
		dr	JASON HSU	engr	JASON HSU	size	A4
		chr	J. TSAO	chr	J. TSAO	dwg no	69802
		appd	L. WANG	appd	L. WANG	code	TWN
sheet	revision	sheet	sheet	sheet	sheet	sheet	5 of
index	sheet	sheet	sheet	sheet	sheet	sheet	sheet

code 24180