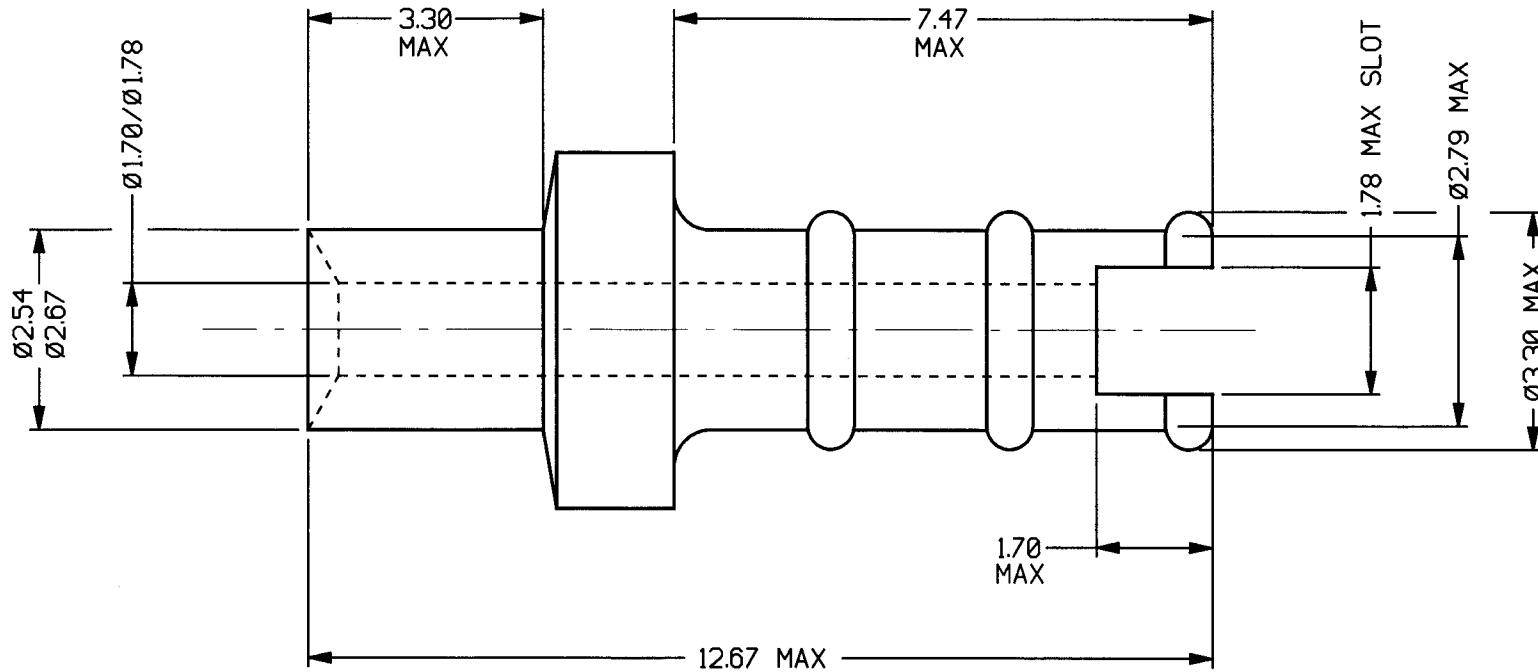


CUSTOMER INFORMATION SHEET



A	31.394	
ISS.	DATE	C/N
DRAWN: I.SANDY		
CHECKED: <i>[Signature]</i>		
APPD: <i>[Signature]</i>		
CUSTOMER REF.		
ASSEMBLY DRG:		

HARWIN

TOLERANCES

X.	±1mm
X.X	±0.25mm
X.XX	±0.10mm
X.XXX	±0.01mm
ANGLES	±1°

MATERIAL:
BRASS CZ121 TO BS2874

TITLE:
TERMINAL LUG

HARWIN PLC
U.K

TEL: (0705) 370451
FAX: (0705) 324010

HARWIN INC
U.S.A.

TEL: (812) 285-0055
FAX: (812) 285-0056

HARWIN PTE
SINGAPORE

TEL: 7794909
FAX: 7793868

IF IN DOUBT - ASK

FINISH: 90/10 TIN/LEAD

S/AREA: mm²

DRAWING NUMBER:

H2071Z01

SHT.
2
OF
2