

DRAWING NUMBER

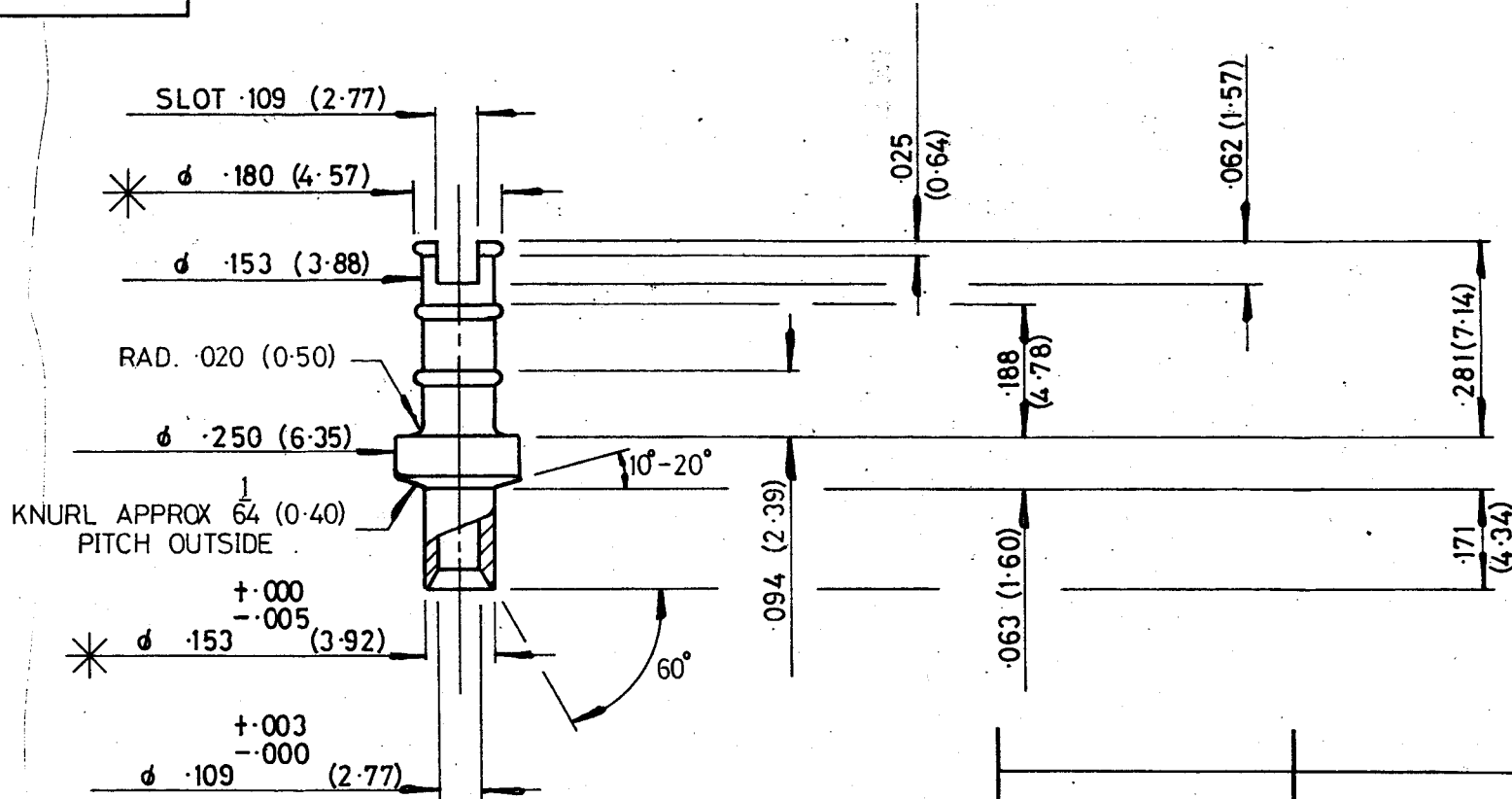
H2074Z01



THIRD ANGLE PROJECTION

S/AREA 342.874 mm²

DO NOT SCALE



12	19.12.88	1384
11	21/5/86	982
10	20-11-78	was MA 1042
6	4-5-78	418
5	13-9-73	081
ISS. DATE		CHANGE

APPD.	<i>[Signature]</i>
CHKD. MTR	<i>[Signature]</i>
DRAWN	<i>[Signature]</i>
MOLD. REF. H 2074 Z	
CAM No.	1053
MACH. No.	D6
ASSY. DRAWING	

" TO BE ANNEALED BEFORE PLATING. "

NOTE — ALL DIMS MARKED THUS * TO APPLY AFTER PLATING.

HARWIN ENGINEERS S.A.
PORTSMOUTH PO6 IRT

MATERIAL BRASS B92874 CZ121
TITLE TERMINAL LUG

FINISH 90/10 TIN LEAD(FOI01)
TOLERANCES
FRAC. ± 1/64 DEC ± .005 MM ±
DIMS. IN INCH (mm) SCALE —

DRAWING NUMBER
H2074Z01