

Customer Information Sheet

DRAWING No.: H2121-01

SHEET 2 OF 2

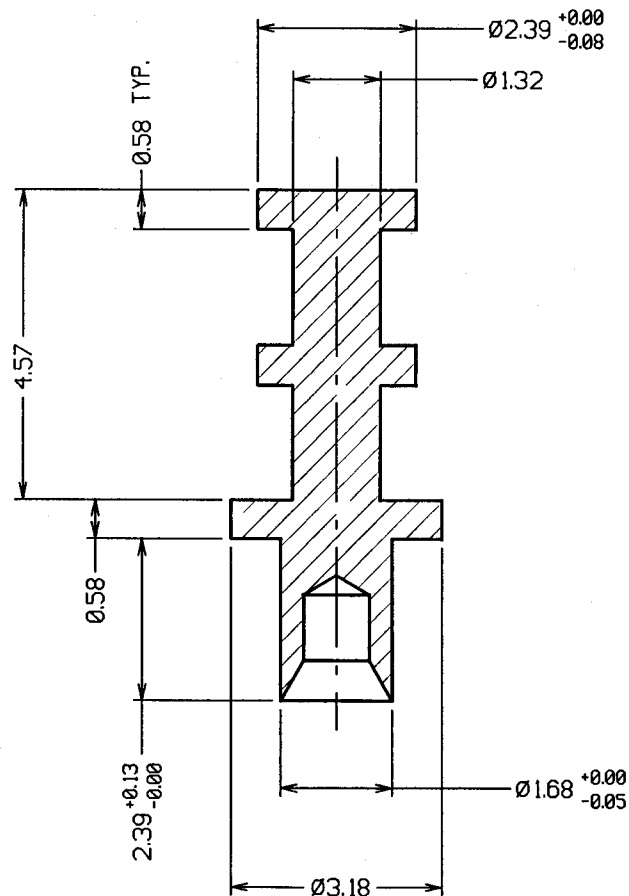
IF IN DOUBT - ASK

©

NOT TO SCALE

THIRD ANGLE PROJECTION

ALL DIMENSIONS IN mm



NOTES:

1. RECOMMENDED PCB MOUNTING HOLE = $\varnothing 1.73-1.60$ mm.
2. TO SUIT 1.6mm PCB THICKNESS.
3. SWAGING TOOL PART NO. = Z2121-00.

| | | |
|---------------|--------------------|--------|
| 14 | 16.09.99 | 5007 |
| ISS: | DATE | C/NOTE |
| APPROVED: | <i>[Signature]</i> | |
| CHECKED: | <i>[Signature]</i> | |
| DRAWN: | J. KEIR | |
| CUSTOMER REF: | | |
| ASSEMBLY DRG: | | |

HARWIN

HARWIN INC
U.S.A.
TEL: (812) 285 0055
FAX: (812) 285 0056

HARWIN PLC
UK.
TEL: 01705 370451
FAX: 01705 314590

HARWIN PTE
SINGAPORE
TEL: 65 7794909
FAX: 65 7793868

THIS DRAWING AND ANY INFORMATION OR DESCRIPTIVE MATTER SET OUT HEREON ARE CONFIDENTIAL AND COPYRIGHT PROPERTY OF THE HARWIN GROUP AND MUST NOT BE DISCLOSED, LOANED, COPIED OR USED FOR MANUFACTURING, TENDERING OR FOR ANY OTHER PURPOSE WITHOUT THEIR WRITTEN PERMISSION

TOLERANCES
X. - ± 1 mm
X.X - ± 0.25 mm
X.XX - ± 0.10 mm
X.XXX - ± 0.01 mm
ANGLES - $\pm 1^\circ$
UNLESS STATED

MATERIAL:
BRASS CZ124 $\frac{1}{2}$ HARD
TO BS2874 (BRM1017)

FINISH: TIN
S/AREA: mm²

TITLE:
TERMINAL LUG

DRAWING NUMBER:
H2121-01

SHT
2
OF
2