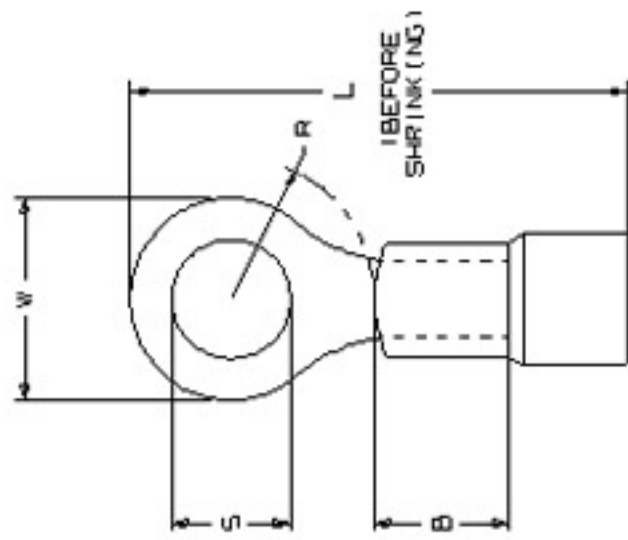


THIS COPY IS PROVIDED ON A RESTRICTED BASIS AND IS NOT TO BE USED IN ANY WAY DETRIMENTAL TO THE INTERESTS OF PANDUIT CORP.

- NOTES: 1. UL LISTED AND CSA CERTIFIED AFTER HEAT SHRINKING FOR:
 A. 600 V. MAX. VOLTAGE RATING
 B. 257°F (125°C) MAX. TEMPERATURE RATING.
2. MATERIAL: A. TERMINAL - TIN PLATED COPPER WITH BRAZED SEAM.
 B. INSULATOR - HEAT SHRINKABLE POLYOLEFIN WITH HOT MELT SEALANT.
3. MINIMUM SHRINK TEMPERATURE: 300°F (150°C)
4. ALL DIMENSIONS SHOWN ARE NOMINAL.
5. INSTALLATION TOOL: CT-310
6. WIRE STRIP LENGTH: 5/16" (1.91mm)



UL LISTED
 1200
 ES2164

SA CERTIFIED
 73971

PANDUIT PART NUMBER	WIRE RANGE (AWG)	STUD SIZE S	DIMENSIONS		MAX WIRE (INSUL. DIA)	R MIN WASHER RADIUS	INSUL. COLOR	PKG QTY
			W (1.25)	L (min.)				
PH18-6R	22-18	#6	.250 (6.35)	1.05 (26.67)	.170 (4.32)	.130 (3.30)	RED	25
PH18-6R	22-18	#8	.250 (6.35)	1.08 (27.43)	.170 (4.32)	.140 (3.56)	RED	25
PH18-10R	22-18	#10	.250 (6.35)	1.08 (27.43)	.170 (4.32)	.172 (4.37)	RED	25
PH18-14R	22-18	1/4"	.250 (6.35)	1.24 (31.50)	.170 (4.32)	.290 (7.37)	RED	25
PH14-6R	16-14	#6	.250 (6.35)	1.05 (26.67)	.190 (4.83)	.130 (3.30)	BLUE	25
PH14-6R	16-14	#8	.250 (6.35)	1.03 (26.16)	.190 (4.83)	.140 (3.56)	BLUE	25
PH14-10R	16-14	#10	.250 (6.35)	1.05 (26.67)	.190 (4.83)	.172 (4.37)	BLUE	25
NCPH14-10R	16-14	#10	.250 (6.35)	1.05 (26.67)	.190 (4.83)	.172 (4.37)	BLUE	500
PH14-14R	16-14	1/4"	.250 (6.35)	1.24 (31.50)	.190 (4.83)	.290 (7.37)	BLUE	25
PH14-56R	16-14	5/16"	.250 (6.35)	1.46 (37.11)	.190 (4.83)	.290 (7.37)	BLUE	25
PH14-38R	16-14	3/8"	.250 (6.35)	1.46 (37.11)	.190 (4.83)	.290 (7.37)	BLUE	25
PH10-6R	12-10	#8	.250 (6.35)	1.37 (34.61)	.240 (6.10)	.140 (3.56)	YELLOW	20
PH10-10R	12-10	#10	.250 (6.35)	1.20 (30.48)	.240 (6.10)	.172 (4.37)	YELLOW	20
NCPH10-10R	12-10	#10	.250 (6.35)	1.20 (30.48)	.240 (6.10)	.172 (4.37)	YELLOW	200
PH10-14R	12-10	1/4"	.250 (6.35)	1.52 (38.61)	.240 (6.10)	.290 (7.37)	YELLOW	20
NCPH10-14R	12-10	1/4"	.250 (6.35)	1.52 (38.61)	.240 (6.10)	.290 (7.37)	YELLOW	200
PH10-38R	12-10	3/8"	.250 (6.35)	1.58 (40.13)	.240 (6.10)	.290 (7.37)	YELLOW	20
PH10-12R	12-10	1/2"	.250 (6.35)	1.72 (43.70)	.240 (6.10)	.350 (8.89)	YELLOW	20



7 FOLEY PARK, ILLINOIS

HEAT SHRINK INSULATED RING TERMINALS

REV	DATE	BY	CHK	DESCRIPTION	ECN #	PH	CUST	QTY	DRAWING NO	SCALE
05	07/07	SRB		Changed W and L dimensions for part numbers PH14-10R, NCPH14-10R, and L dimensions for part numbers PH10-14R, NCPH10-14R, PH10-38R						
04	6/07	BCT		ADDED TOLERANCES TO W & L DIMS. REVISED L DIM OF PH18-14R, PH14-56R & PH14-38R PER CUSTOMER REQUEST	TR00055	TR0	CLM			
03	12/05	DAW		ADDED NCPH14-10R, NCPH10-10R, NCPH10-14R.						