

DIMENSIONS ARE IN INCHES		UNLESS OTHERWISE NOTED		TOLERANCES ARE:		TITLE:	DWG NO:
ONE PLACE DECIMALS: ± .1	[2.5]	THREE PLACE DECIMALS: ± .005	[.127]	ANGLES	± 2°	.100 [2.54] C.L. SHUNT ASSEMBLY	SNT-100-XX-X-X
TWO PLACE DECIMALS: ± .01	[.25]	FOUR PLACE DECIMALS: ± .0020	[.0508]				SHEET 1 OF 1

BODY: USE SNT-100-XX
CONTACT: USE C-37-X

SNT-100-XX-X-X

BODY SPECIFICATION
-100

OPTION
-H: HANDLE (SEE -H OPTION)

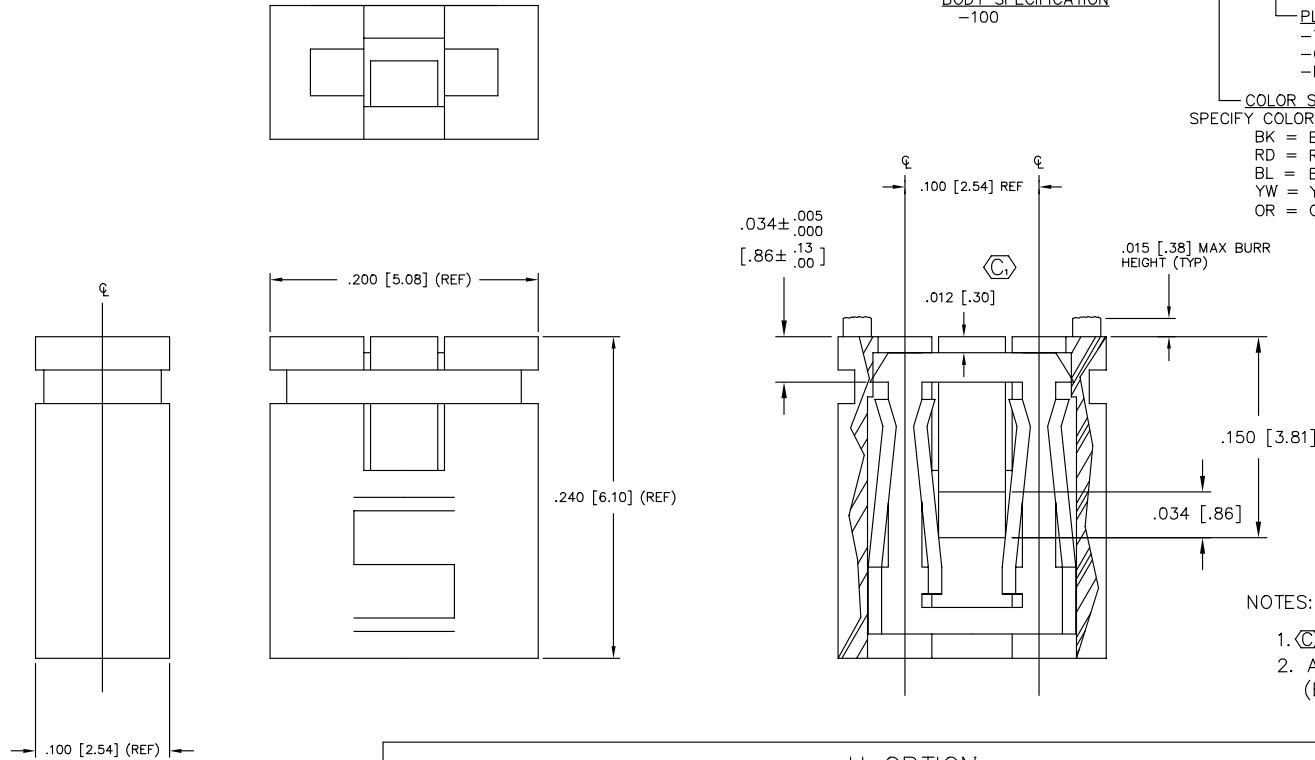
PLATING SPECIFICATION

- T = TIN: SPECIFY -T IN CONTACT SUFFIX -X
- G = GOLD: SPECIFY -G IN CONTACT SUFFIX -X
- H = HEAVY GOLD: SPECIFY -H IN CONTACT SUFFIX -X

COLOR SPECIFICATION

SPECIFY COLOR IN BODY SUFFIX -XX

- BK = BLACK
- RD = RED
- BL = BLUE
- YW = YELLOW
- OR = ORANGE



NOTES:

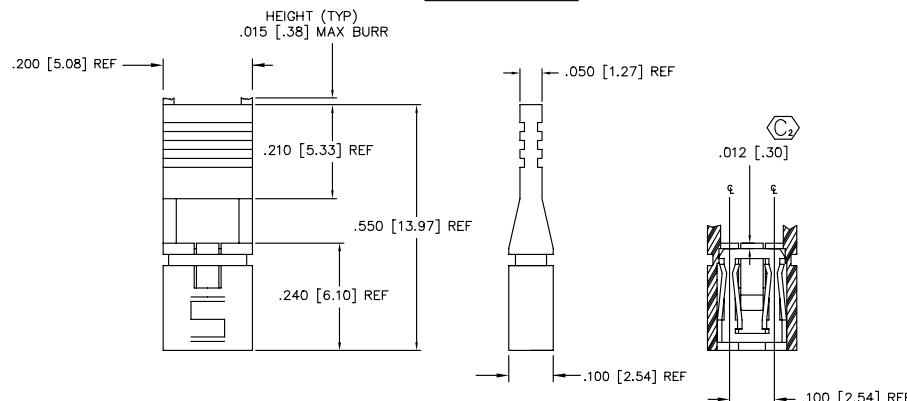
1. (C1) REPRESENTS A CRITICAL DIMENSION.
2. ALTERNATE VENDOR CAVITY ID RUNNER/CAVITY (EX: AC IS RUNNER 1 CAVITY 3).

Do not scale
from this print

PROPRIETARY NOTE

THIS DOCUMENT CONTAINS INFORMATION CONFIDENTIAL AND PROPRIETARY TO SAMTEC INC. AND SHALL NOT BE REPRODUCED OR TRANSMITTED TO OTHER DOCUMENTS OR DISCLOSED TO OTHERS OR USED FOR ANY PURPOSE OTHER THAN THAT FOR WHICH IT WAS OBTAINED WITHOUT THE EXPRESSED WRITTEN CONSENT OF SAMTEC INC.

-H OPTION



BODY: USE SNH-100-XX
CONTACT: USE C-37-X

SCALE: .3

samtec

MISC\MKTG
SNT-MKT

520 PARK EAST BLVD. NEW ALBANY, INDIANA 47150
PHONE (812) 944-6733 P.O. BOX 1147
CODE 55322

MADE BY: KOLB 1-31-90

SNT-100-XX-X-X
SHEET 1 OF 1