

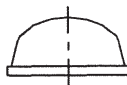
BUMPERS AND FEET



RBS

HEMISPHERICAL MOULDED BUMPERS

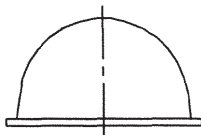
RBS-2



RBS-7



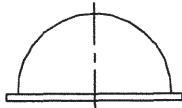
RBS-8



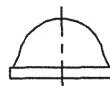
RBS-12



RBS-15



RBS-22



RBS-27



RBS-39



RBS-40



Part No.	Diameter Ø mm	Height mm	Std. Pk.	Carton qty.	Standard-Colours
RBS-2	11.1	5.1	242	5.082	CL, BLK, WH, BR, GR
RBS-7	8.5	2.2	450	5.400	CL, BLK
RBS-8	17.6	9.6	98	2.234	CL, BLK, WH
RBS-12	9.5	3.8	200	5.000	CL, BLK
RBS-15	16.0	7.9	128	3.200	CL, BLK, WH
RBS-22	9.5	5.4	288	3.584	CL
RBS-27	7.9	2.2	450	5.400	CL, BLK
RBS-39	19.1	1.9	84	5.040	CL, BLK
RBS-40	6.4	1.6	578	15.028	CL, BLK

Colour Code Guide	
Colour	Code
clear	CL
black	BLK
white	WH
brown	BR
grey	GR

Note:

RBS	27	CL
Part	Type	Colour Code

Material: Polyurethane, UL 94 HB, Shore A 60-70, RMS-64
 Tape: transparent Tape: Synthetic Rubber, RMS-68
 colour Tape: Acrylic, RMS-65
 Std. Pk.: see table

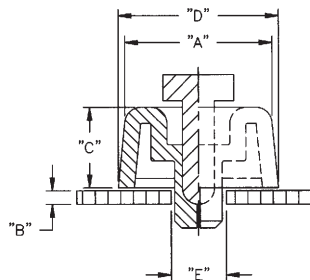
F



SFF

SOFT FAST FEET

Part No.	Hole "E" Ø mm	"B" mm	"A" mm	"C" mm	"D" mm
SFF-018	7.8	0.8 - 1.5	18.0	9.9	20.1
SFF-021		5.0 - 8.0	20.1	6.1	21.1
SFF-023		0.8 - 1.5	23.1	5.1	24.9
SFF-028		0.8 - 1.5	18.0	15.0	20.1



Note:

SFF	018
Part	Size

Material: Foot: Santoprene - black, UL 94 HB, RMS-42
 Pin: Polypropylene - black, RMS-126
 Std. Pk.: 100 pcs.

BUMPERS AND FEET

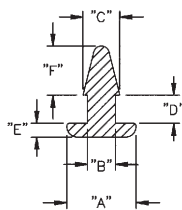


POF

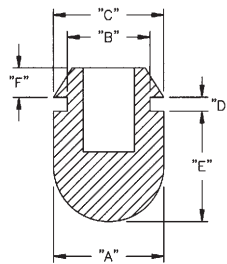
PUSH ON FEET

Part No.	"A" Ø mm	"B" Ø mm	"C" Ø mm	"D" mm	"E" mm	"F" mm	Style
POF-40022	7.9	3.2	4.3	3.3	1.5	4.1	1
POF-40048	7.9	3.7	5.8	1.5	2.3	3.6	1
POF-40059	12.7	9.5	12.2	1.5	12.7	3.6	2
POF-50185	13.7	6.3	7.6	2.0	4.6	8.9	3
POF-12664	15.7	7.0	8.6	1.3	5.1	4.1	3

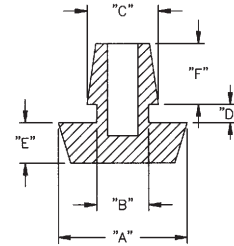
STYLE 1



STYLE 2



STYLE 3

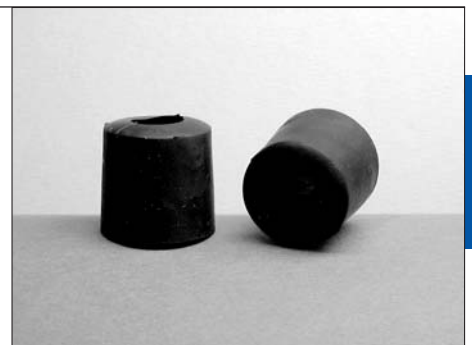


Material: flexible PVC - black
RMS-25, Shore A55
Std. Pk.: 100 pcs.

Note:

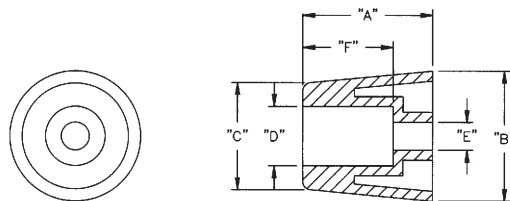
POF	40022
Part	Type

Part No.	"A" mm	"B" Ø mm	"C" Ø mm	"D" Ø mm	"E" Ø mm	"F" mm
SOF-15129	7.1	16.0	13.5	7.9	3.3	4.1
SOF-15140	9.4	17.5	17.5	7.9	4.1	5.1
SOF-15125	11.7	19.6	18.3	10.2	4.8	6.4
SOF-15111	15.2	19.1	12.7	7.9	4.1	4.8
SOF-15127	18.3	18.3	17.5	7.9	4.8	7.9
SOF-15126	25.4	21.6	12.7	8.1	4.1	14.2



SOF

STICK ON FEET



Material: thermoplastic rubber - black
RMS-125
Std. Pk.: 100 pcs.

Note:

SOF	15140
Part	Type