

4

3

2

1

THIS DRAWING IS UNPUBLISHED.

RELEASED FOR PUBLICATION

© COPYRIGHT BY TYCO ELECTRONICS CORPORATION.

ALL RIGHTS RESERVED.

LOC ES DIST 00

REVISIONS

P	LTR	DESCRIPTION	DATE	DWN	APVD
C1		REVISED ECR-09-016816	27JUL09	D.S	S.Y

TYPE 1

TYPE 2

TOLERANCES UNLESS OTHERWISE SPECIFIED:

10> : ±0.2
 30>* >10 : ±0.25
 100>* >30 : ±0.3
 ANGLE : ±3°

NOTE:
 1. PEELING STRENGTH: 0.20-0.69N (20-70gf)
 PEELING ANGLE: 165-180°
 PEELING SPEED: 300mm/MINUTE.

ADHESIVE TAPE
 FLANGE
 SECURE TO FLANGE WITH ADHESIVE TAPE
 COVER TAPE

Ø330 REEL DIA
 Ø80 FLANGE CORE DIA
 W1
 W2 REEL WIDTH
 WIND COVER TAPE AROUND OUTER PERIPHERY 1 TURN
 PEELING ANGLE 165-180°
 HOLES 12
 APPROX 300mm WITH PRODUCT CHARGE
 APPROX 300mm WITHOUT CHARGE

12
 9.6
 5.1
 1.45
 2.7
 1.1
 OFF TOP OF REEL

THIS DRAWING IS A CONTROLLED DOCUMENT.

DWN S.XU 31JAN03
 CHK S.YAO 31JAN03
 APVD T.SASAKI 31JAN03
 PRODUCT SPEC 108-60018
 APPLICATION SPEC 114-5223
 WEIGHT
 MATERIAL FINISH

Tyco Electronics
 Tyco Electronics Corporation
 Shanghai, P.R.China, 200333
 NAME AMP Mini CT Connector 1.5mm PITCH SINGLE ROW POST HDR ASS'Y (H) SMT TYPE WITH BOSS, EMBOSS TAPE PACKAGED
 SIZE CAGE CODE DRAWING NO RESTRICTED TO
 A3 00779 C=292228
 SCALE NTS SHEET 1 OF 4 REV C1

AMP 1470-19 REV 31MAR2000

THIS DRAWING IS UNPUBLISHED. RELEASED FOR PUBLICATION
 © COPYRIGHT BY TYCO ELECTRONICS CORPORATION. ALL RIGHTS RESERVED.

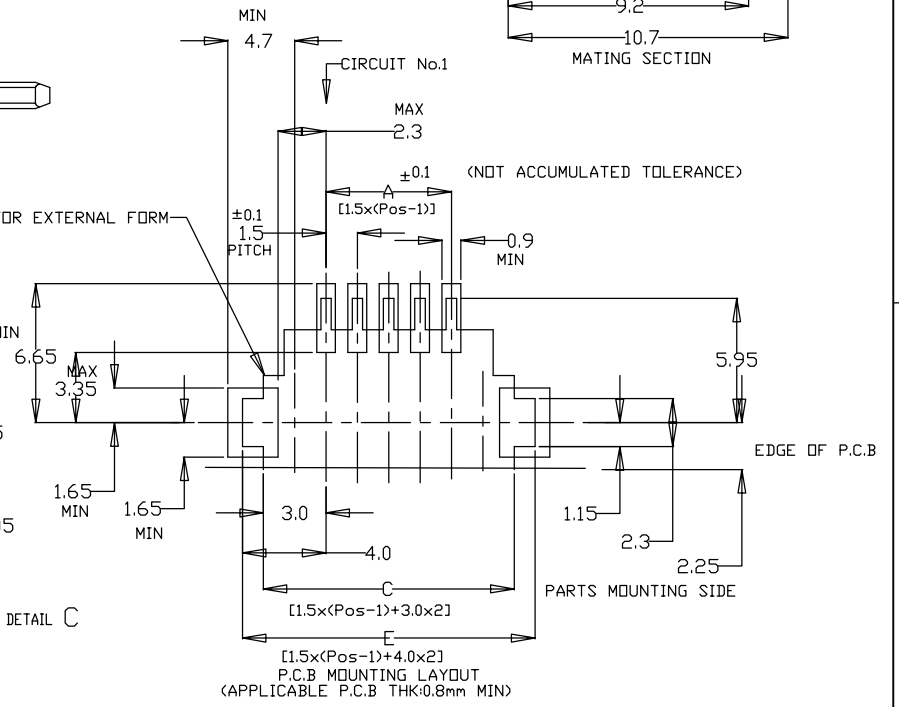
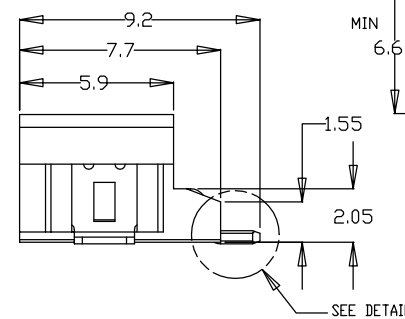
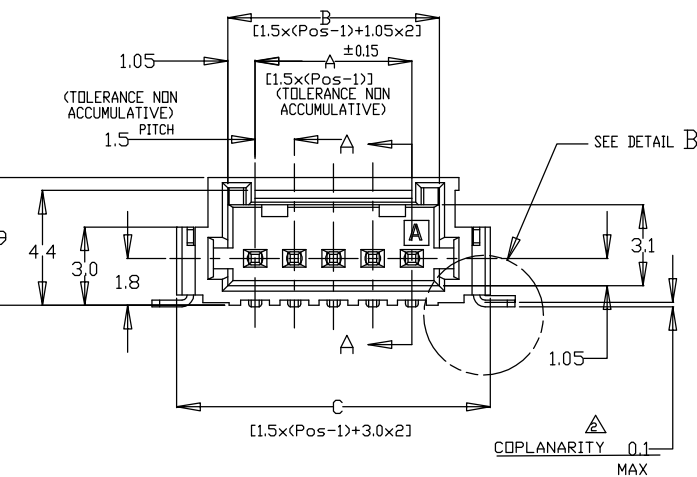
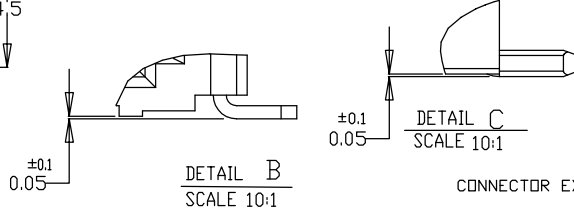
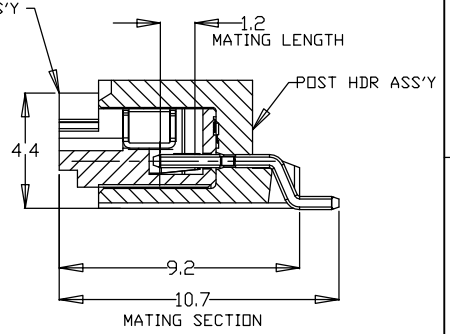
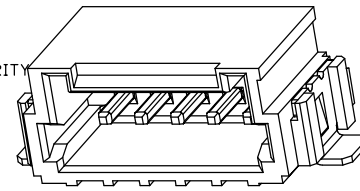
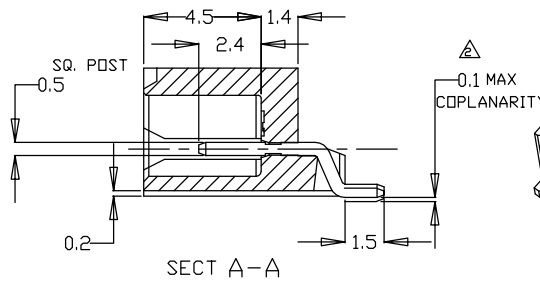
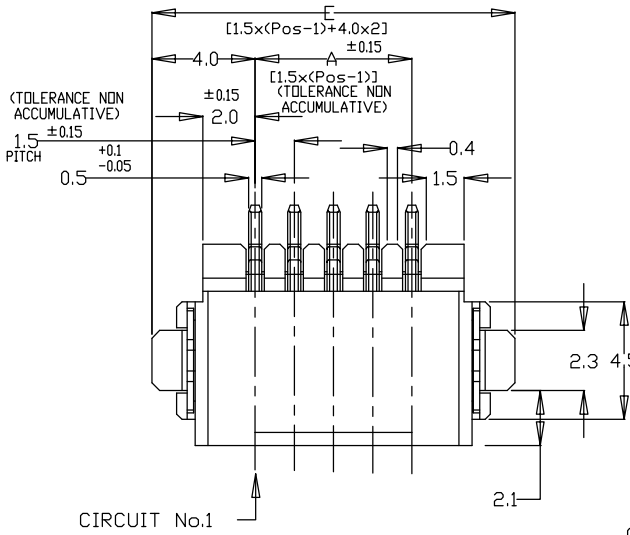
LOC	DIST	REVISIONS					
ES	00	P	LTR	DESCRIPTION	DATE	DWN	APVD
		-		SEE SHEET 1	-	-	-

TAPE TYPE	W2	W1	F	E	D	C	B	A	QTY/REEL	POS	COLOR	ON TAPE P/N
TYPE 2	61.5	57.5	6.2	52.4	30.5	56	37.1	±0.15 26.2	700	20	BLACK	7-292228-0
	61.5	57.5	6.2	52.4	29.0	56	35.6	700	19	6-292228-9		
	49.5	45.5	6.2	40.4	27.5	44	34.1	700	18	6-292228-8		
	49.5	45.5	6.2	40.4	26.0	44	32.6	700	17	6-292228-7		
	49.5	45.5	6.2	40.4	24.5	44	31.1	700	16	6-292228-6		
	49.5	45.5	6.2	40.4	23.0	44	29.6	700	15	6-292228-5		
	49.5	45.5	6.2	40.4	21.5	44	28.1	700	14	6-292228-4		
	49.5	45.5	6.2	40.4	20.0	44	26.6	700	13	6-292228-3		
	49.5	45.5	6.2	40.4	18.5	44	25.1	700	12	6-292228-2		
	49.5	45.5	6.2	40.4	17.0	44	23.6	700	11	6-292228-1		
	37.5	33.5	6.2	28.4	15.5	32	22.1	14.2	700	10		6-292228-0
	37.5	33.5	6.2	28.4	14.0	32	20.6	14.2	700	9		5-292228-9
	37.5	33.5	6.2	28.4	12.5	32	19.1	14.2	700	8		5-292228-8
	37.5	33.5	6.2	28.4	11.0	32	17.6	14.2	700	7		5-292228-7
TYPE 1	29.5	25.5	6.2	-	9.5	24	16.1	11.5	700	6	5-292228-6	
	29.5	25.5	6.2	-	8.0	24	14.6	11.5	700	5	5-292228-5	
	29.5	25.5	6.2	-	6.5	24	13.1	11.5	700	4	5-292228-4	
	29.5	25.5	4.7	-	5.0	24	11.6	11.5	700	3	5-292228-3	
	29.5	25.5	2.8	-	3.5	24	10.1	11.5	700	2	5-292228-2	

TAPE TYPE	W2	W1	F	E	D	C	B	A	QTY/REEL	POS	COLOR	ON TAPE P/N
TYPE 2	61.5	57.5	6.2	52.4	30.5	56	37.1	±0.15 26.2	700	20	BEIGE	2-292228-0
	61.5	57.5	6.2	52.4	29.0	56	35.6	700	19	1-292228-9		
	49.5	45.5	6.2	40.4	27.5	44	34.1	700	18	1-292228-8		
	49.5	45.5	6.2	40.4	26.0	44	32.6	700	17	1-292228-7		
	49.5	45.5	6.2	40.4	24.5	44	31.1	700	16	1-292228-6		
	49.5	45.5	6.2	40.4	23.0	44	29.6	700	15	1-292228-5		
	49.5	45.5	6.2	40.4	21.5	44	28.1	700	14	1-292228-4		
	49.5	45.5	6.2	40.4	20.0	44	26.6	700	13	1-292228-3		
	49.5	45.5	6.2	40.4	18.5	44	25.1	700	12	1-292228-2		
	49.5	45.5	6.2	40.4	17.0	44	23.6	700	11	1-292228-1		
	37.5	33.5	6.2	28.4	15.5	32	22.1	14.2	700	10		1-292228-0
	37.5	33.5	6.2	28.4	14.0	32	20.6	14.2	700	9		292228-9
	37.5	33.5	6.2	28.4	12.5	32	19.1	14.2	700	8		292228-8
	37.5	33.5	6.2	28.4	11.0	32	17.6	14.2	700	7		292228-7
TYPE 1	29.5	25.5	6.2	-	9.5	24	16.1	11.5	700	6	292228-6	
	29.5	25.5	6.2	-	8.0	24	14.6	11.5	700	5	292228-5	
	29.5	25.5	6.2	-	6.5	24	13.1	11.5	700	4	292228-4	
	29.5	25.5	4.7	-	5.0	24	11.6	11.5	700	3	292228-3	
	29.5	25.5	2.8	-	3.5	24	10.1	11.5	700	2	292228-2	

THIS DRAWING IS A CONTROLLED DOCUMENT.		DWN S.XU 31JAN03	Tyco Electronics Corporation Shanghai, P.R.China, 200333	
DIMENSIONS: mm		CHK S.YAO 31JAN03	AMP Mini CT Connector 1.5mm PITCH SINGLE ROW POST HDR ASS'Y (H) SMT TYPE WITH BOSS, EMBOSS TAPE PACKAGED	
TOLERANCES UNLESS OTHERWISE SPECIFIED:		APVD T.SASAKI 31JAN03	NAME	
0 PLC ± - 1 PLC ± - 2 PLC ± - 3 PLC ± - 4 PLC ± - ANGLES ± -		PRODUCT SPEC 108-60018	SIZE CAGE CODE DRAWING NO RESTRICTED TO	
MATERIAL FINISH		APPLICATION SPEC 114-5223	A3 00779 C=292228	
		WEIGHT	CUSTOMER DRAWING SCALE NTS SHEET 2 OF 4 REV C1	

LOC	DIST	REVISIONS					
ES	00	P	LTR	DESCRIPTION	DATE	DWN	APVD
				SEE SHEET 1			



NOTES:
 1. MATERIAL:
 HOUSING: 6T NYLON (HIGH HEAT-RESISTED NYLON) G.F. 30%
 UL94V-0, COLOR: BEIGE OR BLACK
 POST: TIN BRASS WIRE
 TO BE MEASURED WITH CONNECTOR PLACED ON HORIZONTAL DATUM SURFACE,
 FLOAT OF SOLDER TINE AND SOLDER PEG 0.1mm MAX.

THIS DRAWING IS A CONTROLLED DOCUMENT.		DWN	31JAN03	 Tyco Electronics Corporation Shanghai, P.R.China, 200333
DIMENSIONS: mm		CHK	31JAN03	
TOLERANCES UNLESS OTHERWISE SPECIFIED:		APVD	31JAN03	
0 PLC ±- 1 PLC ±- 2 PLC ±- 3 PLC ±- 4 PLC ±- ANGLES ±-		NAME	T.SASAKI	
MATERIAL		PRODUCT SPEC	108-60018	AMP Mini CT Connector 1.5mm PITCH SINGLE ROW POST HDR ASS'Y (H)
		APPLICATION SPEC	114-5223	SMT TYPE WITH BOSS, EMBOSS TAPE PACKAGED
		WEIGHT		SIZE CAGE CODE DRAWING NO RESTRICTED TO
		CUSTOMER DRAWING		A3 00779 C=292228
		SCALE	NTS	SHEET 3 OF 4
				REV C1

THIS DRAWING IS UNPUBLISHED.

RELEASED FOR PUBLICATION

-. - .

© COPYRIGHT - BY TYCO ELECTRONICS CORPORATION.


ALL RIGHTS RESERVED.

LOC ES DIST 00

REVISIONS

P	LTR	DESCRIPTION	DATE	DWN	APVD
-		SEE SHEET 1	-	-	-

1.078	36.5	34.5	30.6	28.5	20	7-292228-0	2-292228-0
1.033	35.0	33.0	29.1	27.0	19	6-292228-9	1-292228-9
0.988	33.5	31.5	27.6	25.5	18	6-292228-8	1-292228-8
0.942	32.0	30.0	26.1	24.0	17	6-292228-7	1-292228-7
0.896	30.5	28.5	24.6	22.5	16	6-292228-6	1-292228-6
0.850	29.0	27.0	23.1	21.0	15	6-292228-5	1-292228-5
0.804	27.5	25.5	21.6	19.5	14	6-292228-4	1-292228-4
0.759	26.0	24.0	20.1	18.0	13	6-292228-3	1-292228-3
0.713	24.5	22.5	18.6	16.5	12	6-292228-2	1-292228-2
0.667	23.0	21.0	17.1	15.0	11	6-292228-1	1-292228-1
0.621	21.5	19.5	15.6	13.5	10	6-292228-0	1-292228-0
0.576	20.0	18.0	14.1	12.0	9	5-292228-9	292228-9
0.530	18.5	16.5	12.6	10.5	8	5-292228-8	292228-8
0.484	17.0	15.0	11.1	9.0	7	5-292228-7	292228-7
0.438	15.5	13.5	9.6	7.5	6	5-292228-6	292228-6
0.392	14.0	12.0	8.1	6.0	5	5-292228-5	292228-5
0.347	12.5	10.5	6.6	4.5	4	5-292228-4	292228-4
0.301	11.0	9.0	5.1	3.0	3	5-292228-3	292228-3
0.255	9.5	7.5	3.6	1.5	2	5-292228-2	292228-2
WEIGHT (g)	E	C	B	A	Pos.	BLACK	BEIGE (NAT)
	DIMENSIONS						P/N

THIS DRAWING IS A CONTROLLED DOCUMENT.		DWN S.XU 31JAN03	 Tyco Electronics Corporation Shanghai, P.R.China, 200333	
DIMENSIONS: mm		CHK S.YAO 31JAN03		
TOLERANCES UNLESS OTHERWISE SPECIFIED:		APVD T.SASAKI 31JAN03	NAME	
0 PLC ± - 1 PLC ± - 2 PLC ± - 3 PLC ± - 4 PLC ± - ANGLES ± -		PRODUCT SPEC 108-60018	AMP Mini CT Connector 1.5mm PITCH	
MATERIAL		APPLICATION SPEC 114-5223	SINGLE ROW POST HDR ASS'Y (H)	
FINISH		WEIGHT	SMT TYPE WITH BOSS, EMBOSS TAPE PACKAGED	
		CUSTOMER DRAWING	SIZE A3	RESTRICTED TO
			CAGE CODE 00779	
			DRAWING NO C=292228	
			SCALE NTS	SHEET 4 OF 4
				REV C1