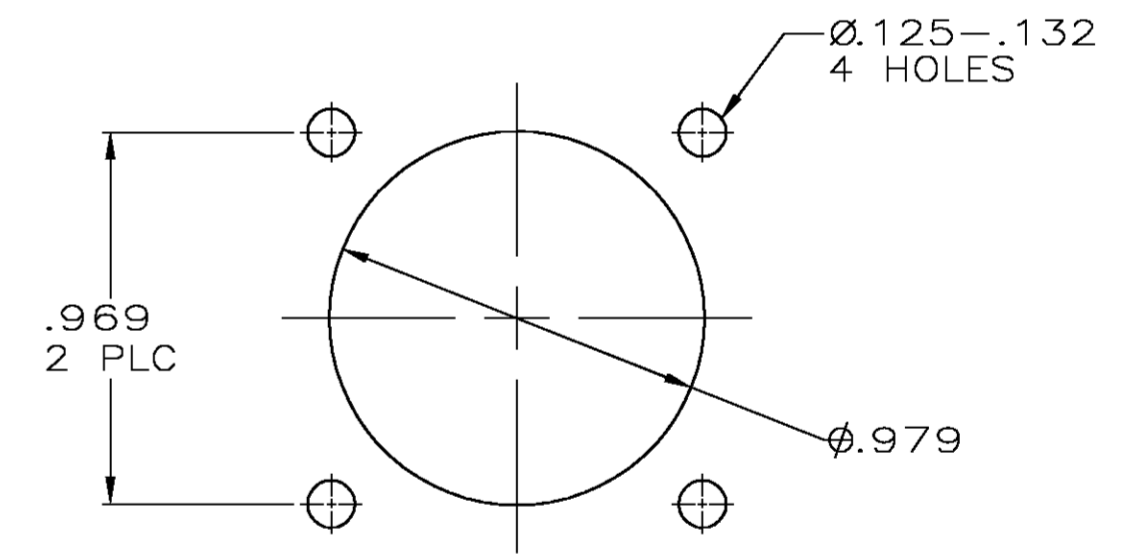
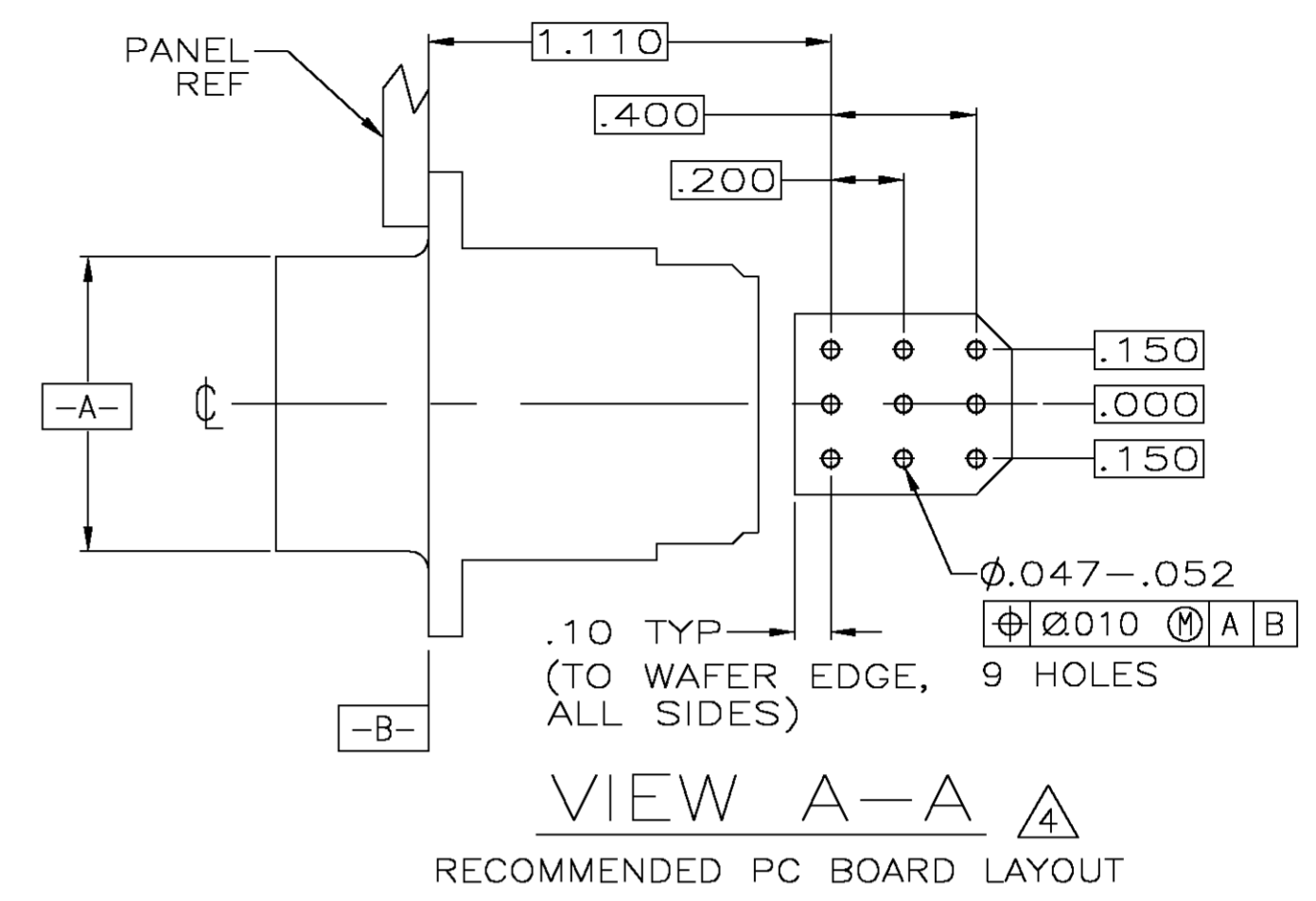
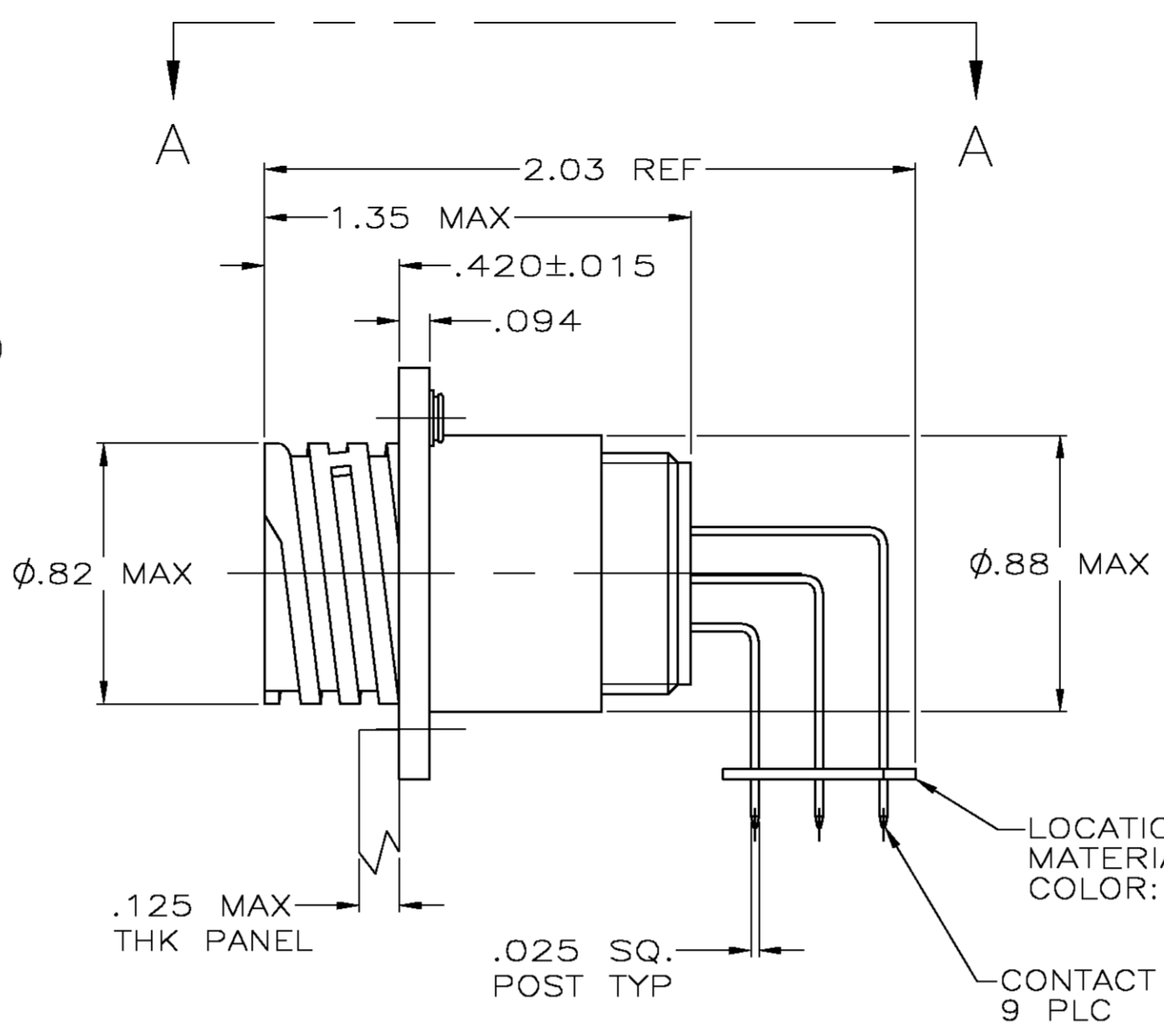
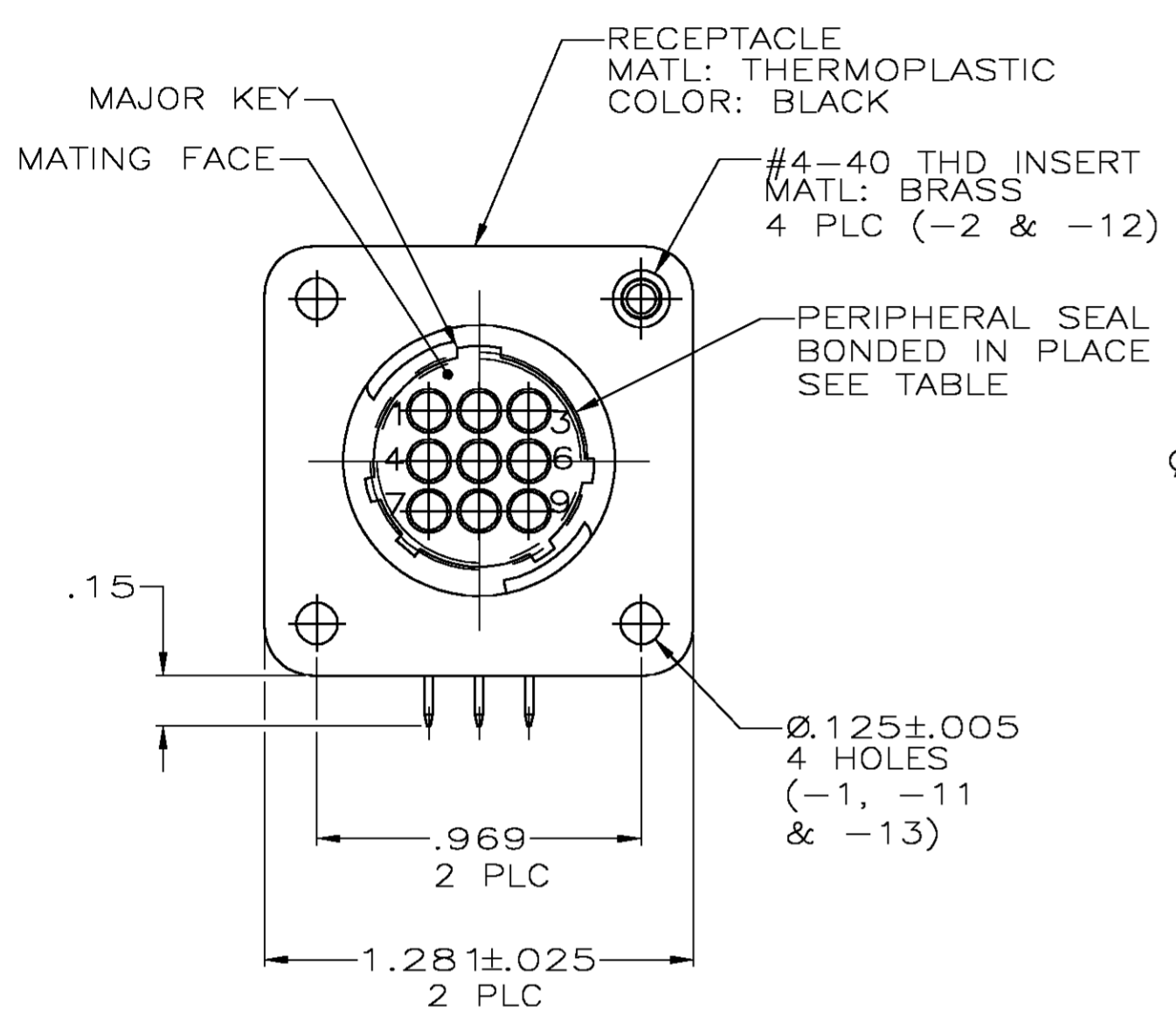


THIS DRAWING IS UNPUBLISHED. RELEASED FOR PUBLICATION
 © COPYRIGHT BY TYCO ELECTRONICS CORPORATION. ALL RIGHTS RESERVED.

LOC		DIST		REVISIONS			
P	LTR	DESCRIPTION		DATE	DWN	APVD	
FT	0	F		REVISED PER 0C3B-0100-05	5/3/05	SS	HW



- CONTACT CAVITIES IDENTIFIED BY CHARACTERS ON FRONT AND REAR FACES OF CONNECTOR.
- #4 FASTENER RECOMMENDED FOR -1 MOUNTING.
#4 FASTENER REQUIRED FOR -2 MOUNTING.
- CONTACT BODY: .000030 MIN GOLD FOR A LENGTH OF .250 MIN FROM MATING END, WITH REMAINDER TO BE GOLD FLASH, BOTH OVER .000050 MIN NICKEL.
CONTACT POST: .000100 MIN TIN-LEAD OVER .000100 MIN COPPER.
- PC BOARD HOLE PATTERN IS DEFINED RELATIVE TO CONNECTOR C.L. AND PANEL MOUNTING FACE INDICATED.
- CONTACT BODY: .000030 MIN GOLD FOR A LENGTH OF .250 MIN FROM MATING END, WITH REMAINDER TO BE GOLD FLASH, BOTH OVER .000050 MIN NICKEL.
CONTACT POST: .000100 MIN TIN OVER .000100 MIN COPPER.

RECOMMENDED PANEL CUTOUT

CONTACT FINISH	SEAL	CONFIG.	PART NUMBER
5	YES	W/O INSERTS	1-796375-3
5	NO	W/INSERTS	1-796375-2
5	NO	W/O INSERTS	1-796375-1
3	YES	W/O INSERTS	796375-3
3	NO	W/INSERTS	796375-2
3	NO	W/O INSERTS	796375-1

THIS DRAWING IS A CONTROLLED DOCUMENT.

DWN HAMNER 2-19-00	Tyco Electronics Corporation Harrisburg, Pa 17105-3608
CHK M.CHACKO 2-23-00	
APVD M.CHACKO 2-23-00	NAME
PRODUCT SPEC	RECEPTACLE ASSY, POSTED, RT ANGLE, STD SEX, SIZE 13-9, SERIES 1, CPC
APPLICATION SPEC	SIZE CAGE CODE DRAWING NO RESTRICTED TO
WEIGHT	A2 00779 C=796375
CUSTOMER DRAWING	SCALE 2:1 SHEET 1 OF 1 REV F