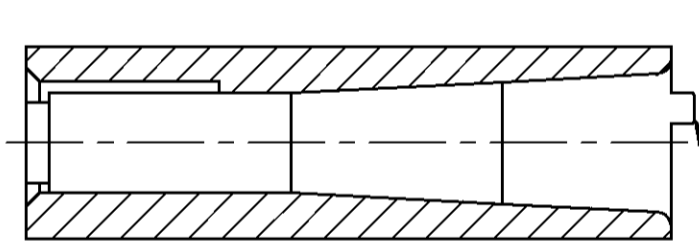
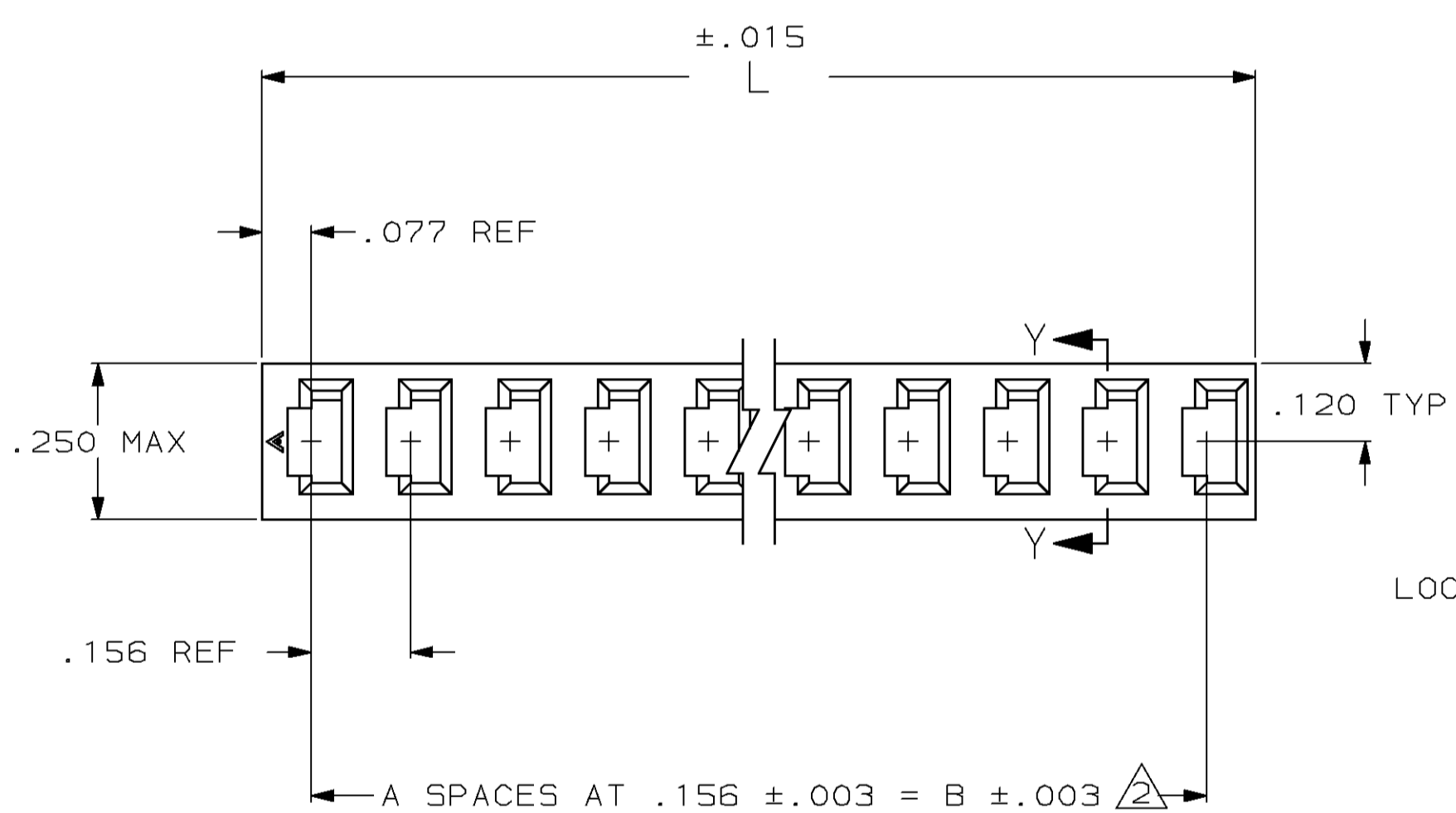
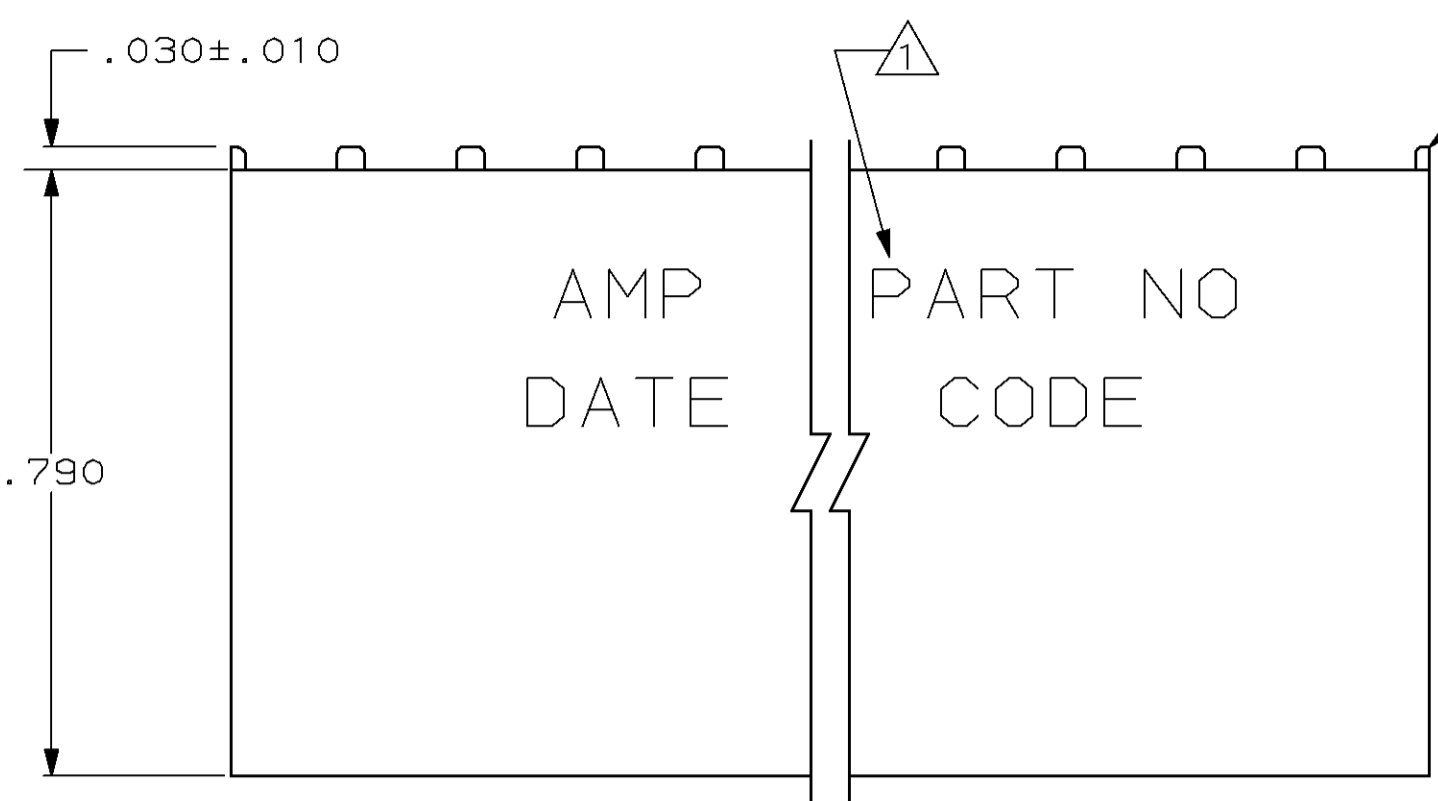


THIS DRAWING IS UNPUBLISHED. RELEASED FOR PUBLICATION, 19 .
 © COPYRIGHT 19 BY AMP INCORPORATED. ALL INTERNATIONAL RIGHTS RESERVED.

LOC	DIST	P	F	ZONE	LTR	DESCRIPTION	DATE	APPD
AD	39	✓	✓		C1	REV-REDRAWN PER ECN AR 1713	11-22-87	-
					D	REV PER AR-1861	3/23/88	SAS
					E	REV LOC & DIST AD-4171	3-90	BF
					F	REV PER 0010-0700-93	8-7-93	SAS
					G	REV PER 0010-1090-93	2-94	SAS
					H	REV PER 0010-1103-93	3-16-94	SAS
					J	REV PER 0010-0358-94	3-30-94	JH
					K	REV PER 0010-0662-94	10-94	JH
					L	REV PER 0310-0035-96	8-1-96	JH
					M	REV PER 0010-0845-96	12-30-96	JH
					N	REV PER 0310-0444-97	19NOV97	JH
					P	REV PER 0310-0473-97	19NOV97	JH
					P1	REVISED PER ECO-09-022178	21SEP09	AEG

IDENTIFIERS ON ENDS OF HOUSING ARE OPTIONAL AT AMP'S DISCRETION



LOCKING LEDGE IDENTIFICATION
SECTION Y-Y

	3.900	3.744	24	25	4-3	4-9	5-87025-0
	3.744	3.588	23	24	4-3	-7	4-3-8
	3.588	3.432	22	23	4-3	-5	4-3-6
	3.432	3.276	21	22	4-3	-3	4-3-4
	3.276	3.120	20	21	4-3	-1	4-3-2
5 OBSOLETE	2.652	2.496	16	17	3-3	4-9	4-87025-0
	2.184	2.028	13	14	3-3	4-7	3-87025-8
OBSOLETE 5	1.716	1.560	10	11	3-3	4-5	3-87025-6
	1.092	.936	6	7	3-3	4-3	3-87025-4
	2.340	2.184	14	15	3-3	4-1	3-87025-2
	2.028	1.872	12	13	2-3	4-9	3-87025-0
	.156	-	-	1	2-3	-8	2-3-7
	.312	.156	1	2	2-3	4-6	2-87025-5
	.780	.624	4	5	2-3	4-4	2-87025-3
	.468	.312	2	3	2-3	4-2	2-87025-1
5 OBSOLETE	2.496	2.340	15	16	1-3	4-9	2-87025-0
5 OBSOLETE	1.560	1.404	9	10	1-3	4-7	1-87025-8
	1.248	1.092	7	8	1-3	4-5	1-87025-6
	.624	.468	3	4	1-3	4-4	1-87025-3
	1.872	1.716	11	12	1-87025-1		1-87025-2
5 OBSOLETE	1.404	1.248	8	9	1-87025-9		1-87025-0
	3.120	2.964	19	20	3	4-7	87025-8
OBSOLETE 5	2.964	2.808	18	19	3	4-5	87025-6
5 OBSOLETE	2.808	2.652	17	18	3	4-3	87025-4
5 OBSOLETE	.936	.780	5	6	3	4-1	87025-2

- 1 INK STAMP (WHITE) "AMP", PART NUMBER AND DATE CODE, .062 HIGH CHARACTERS ON HOUSINGS 6 POSITIONS AND GREATER
- 2 TOLERANCE NON CUMULATIVE
- 3 OBSOLETE.
- 4 OBSOLETE STAMPED PARTS MAY BE SUBSTITUTED WITH UNSTAMPED PARTS.
- 5 OBSOLETE PARTS: OBSOLETE CIS STREAMLINING PER D.RENAUD/D.SINISI

DO NOT SCALE PRINT. UNLESS SPECIFIED DIMENSIONS IN INCHES TOLERANCES ON: 2 PLC DEC ± - 3 PLC DEC ± .005 ANGLES ± -	DR 12/10/87 G. DOUTY	AMP INCORPORATED Harrisburg, Pa. 17105	
	CHK 12/18/87 E. D. TREECE		
MATERIAL FLAME RETARDANT THERMOPLASTIC COLOR-BLACK	APPD 12/18/87 E. D. TREECE	NAME HOUSING, MOD I, .156 ∅ SINGLE ROW, CRIMP SNAP IN	
	APPD 1/4/88 J. S. SCHEIFER	DRAWING NO 87025	
FINISH -	PRODUCT SPEC 108-25016	SIZE C	FSCM NO 00779
	APPLICATION SPEC 114-25000	DRAWING NO 87025	
WEIGHT -	SCALE 4:1	SHEET 1 OF 1	