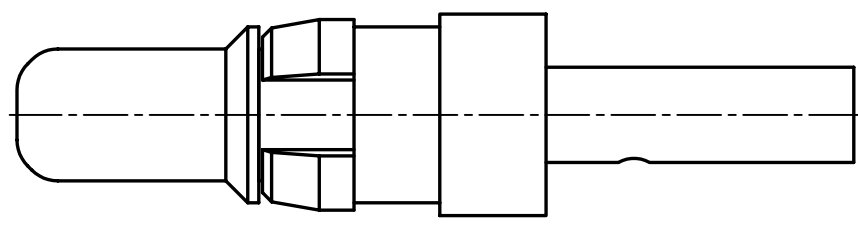
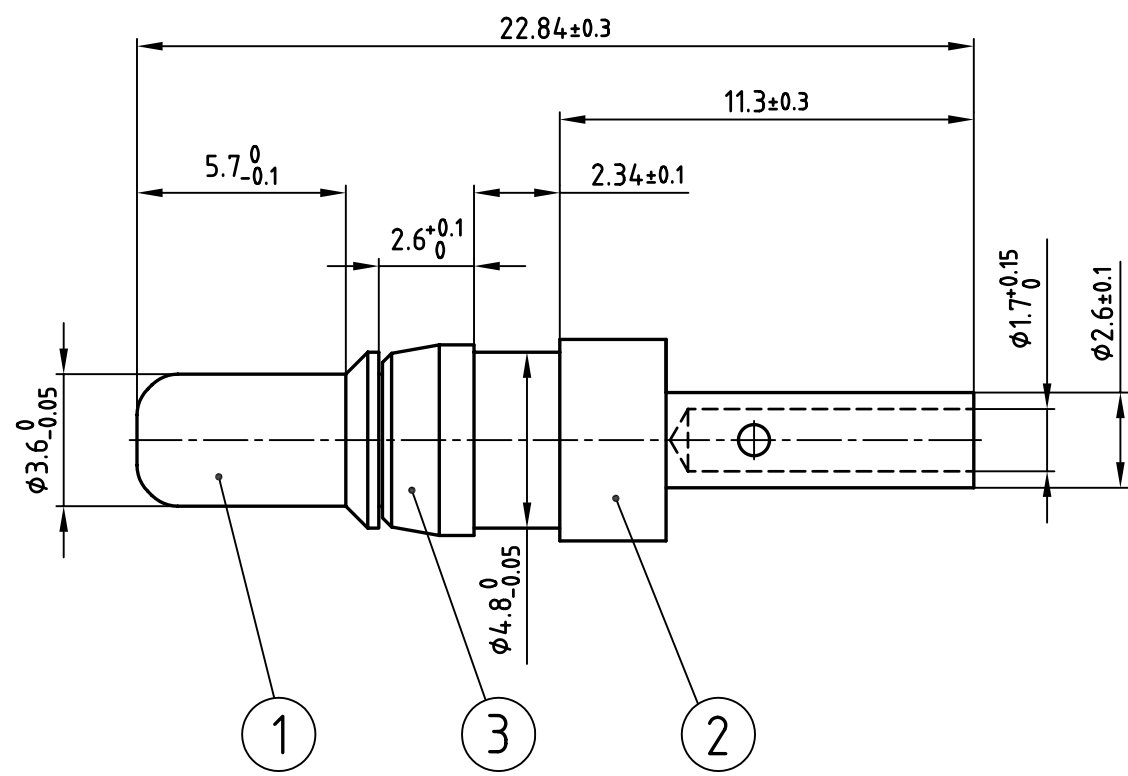


used for: D-SUB COMBINATION



**NOTES:**

- 1. MATERIAL: COPPER ALLOY
- 2. PLATING:  
 ITEM 1: min. 30µ" HARD GOLD OVER min. 50µ" NICKEL  
 ITEM 2: min. 8µ" HARD GOLD OVER min. 50µ" NICKEL  
 ITEM 3: NICKEL PLATED

Directive 2002/95/EC  
„RoHS“  
Compliant

THIS DRAWING MAY NOT BE COPIED OR REPRODUCED IN ANY WAY, AND MAY NOT BE PASSED ON TO A THIRD PARTY WITHOUT WRITTEN PERMISSION.  
OWNERSHIP AND COPYRIGHT OF CONEC GmbH  
DO NOT ALTER CAD DRAWING BY HAND

		tolerance ISO 2768-m				scale: 5:1	
						material: SEE NOTES	
		1998		date		name	
		drawn		23.03.		Barcinski	
		appd.		23.03.		Mickenbecker	
		norm					
		d-old		SK211H18			
						dwg no: CAD/ REL.13	
						DIN-A 4	
rev.	description	date	name			sh: 1/1	
						product no: 131C11019X	

		title: <b>HIGH POWER CONTACT MALE</b> CRIMP VERSION 10A D-SUB COMBINATION	
		dwg no: CAD/ REL.13	
		<b>13K11D1A</b>	
		product no: 131C11019X	

F

E

D

C

B

A

F

E

D

C

B

A

4

3

2

1

4

3

2

1