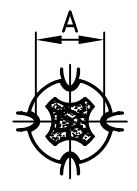
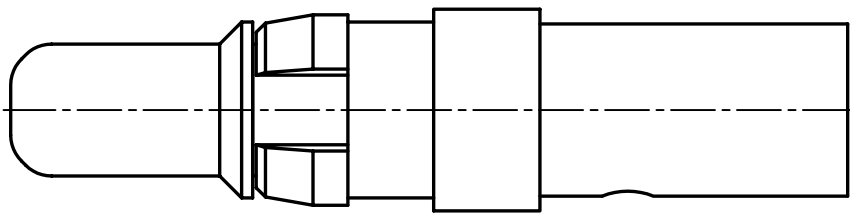
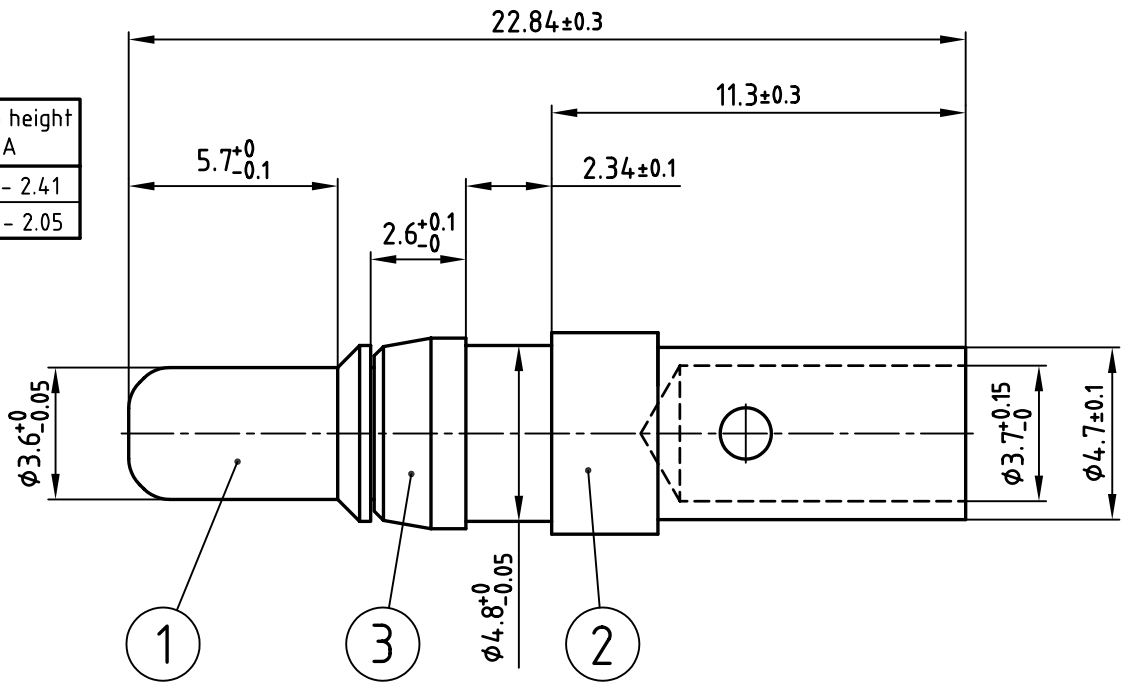


used for: D-SUB COMBINATION



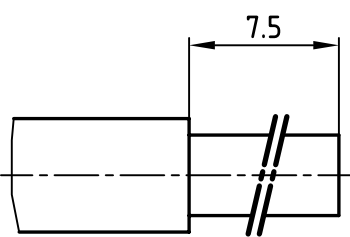
(c)

Selector settings	Crimp height A
7 for AWG 10	2.19 - 2.41
6 for AWG 12	1.94 - 2.05



Directive 2002/95/EC  
"RoHS"  
Compliant

(b) STRIPPING DIMENSIONS



NOTES:

- 1. MATERIAL: COPPER ALLOY
- 2. PLATING:  
ITEM 1: min. 30µ" HARD GOLD OVER min. 50µ" NICKEL  
ITEM 2: min. 8µ" HARD GOLD OVER min. 50µ" NICKEL  
ITEM 3: NICKEL PLATED
- (b) 3. CRIMPING: USE CRIMP TOOL 360X10409X WITH TOOL INSERT 360X20029X  
SELECTOR SETTINGS: 7 FOR AWG 10; 6 FOR AWG 12

THIS DRAWING MAY NOT BE COPIED OR REPRODUCED IN ANY WAY, AND MAY NOT BE PASSED ON TO A THIRD PARTY WITHOUT WRITTEN PERMISSION.  
OWNERSHIP AND COPYRIGHT OF CONEC GmbH  
DO NOT ALTER CAD DRAWING BY HAND

tolerance		ISO 2768-m			
1998	date	name		title:	
drawn	23.03.	Barcinski		<b>HIGH POWER CONTACT MALE</b> CRIMP VERSION 30A D-SUB COMBINATION	
appd.	23.03.	Mickenbecker			
norm					
d-old					
1 x c	Ä 2197	01.04.2005	Lehmen	dwg no: CAD/ REL.13 <b>13K11D3A</b>	
2 x b	Ä 2177	02.03.2005	Lehmen		
rev.	description	date	name	product no: <b>131C11039X</b>	



scale:	5:1
material:	SEE NOTES
DIN-A	4
sh:	1/2