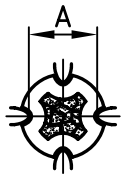
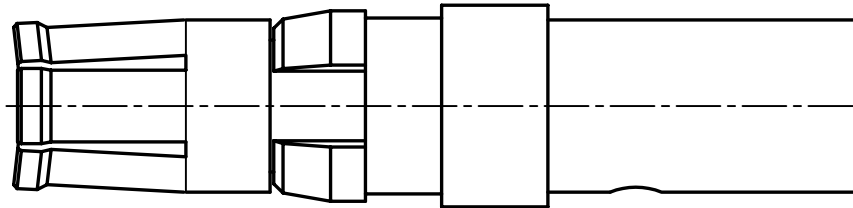
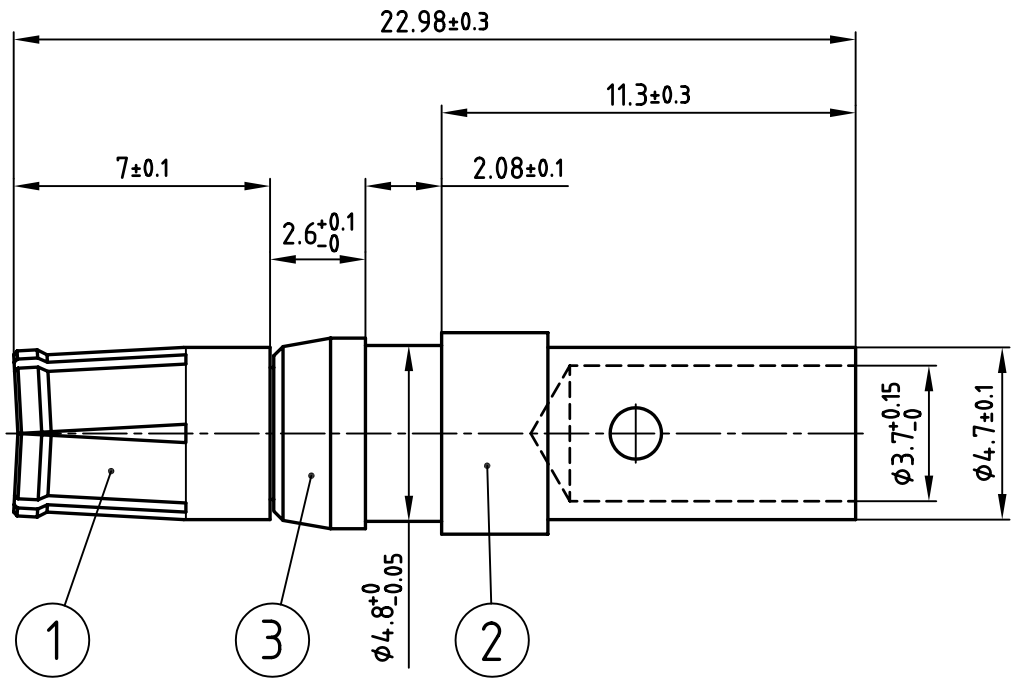


used for: D-SUB COMBINATION



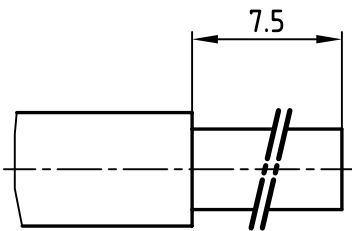
(c)

Selector settings	Crimp height A
7 for AWG 10	2.19 - 2.41
6 for AWG 12	1.94 - 2.05



Directive 2002/95/EC
"RoHS"
Compliant

(b) STRIPPING DIMENSIONS



NOTES:

1. MATERIAL: COPPER ALLOY
2. PLATING:
ITEM 1: min. 30µ" HARD GOLD OVER min. 50µ" NICKEL
ITEM 2: min. 8µ" HARD GOLD OVER min. 50µ" NICKEL
ITEM 3: NICKEL PLATED
- (b) 3. CRIMPING: USE CRIMP TOOL 360X10409X WITH TOOL INSERT 360X20029X
SELECTOR SETTINGS: 7 FOR AWG 10; 6 FOR AWG 12

THIS DRAWING MAY NOT BE COPIED OR REPRODUCED IN ANY WAY, AND MAY NOT BE PASSED ON TO A THIRD PARTY WITHOUT WRITTEN PERMISSION.
OWNERSHIP AND COPYRIGHT OF CONEC GmbH
DO NOT ALTER CAD DRAWING BY HAND

		tolerance			
1998	date	name			
drawn	23.03.	Barcinski			
appd.	23.03.	Mickenbecker			
norm					
d-old					
1 x c	Ä 2197	01.04.2005	Lehmen		
2 x b	Ä 2177	02.03.2005	Lehmen		
rev.	description	date	name		



scale:	5:1
material:	SEE NOTES
title:	HIGH POWER CONTACT FEMALE CRIMP VERSION 30A D-SUB COMBINATION
dwg no:	AutoCAD/REL.13 DIN-A
	4
part no:	132C11039X
	sh: 1/1