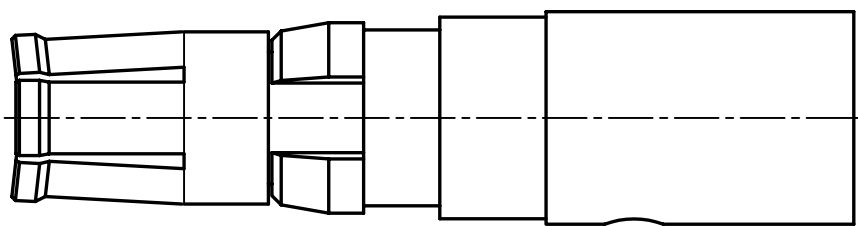
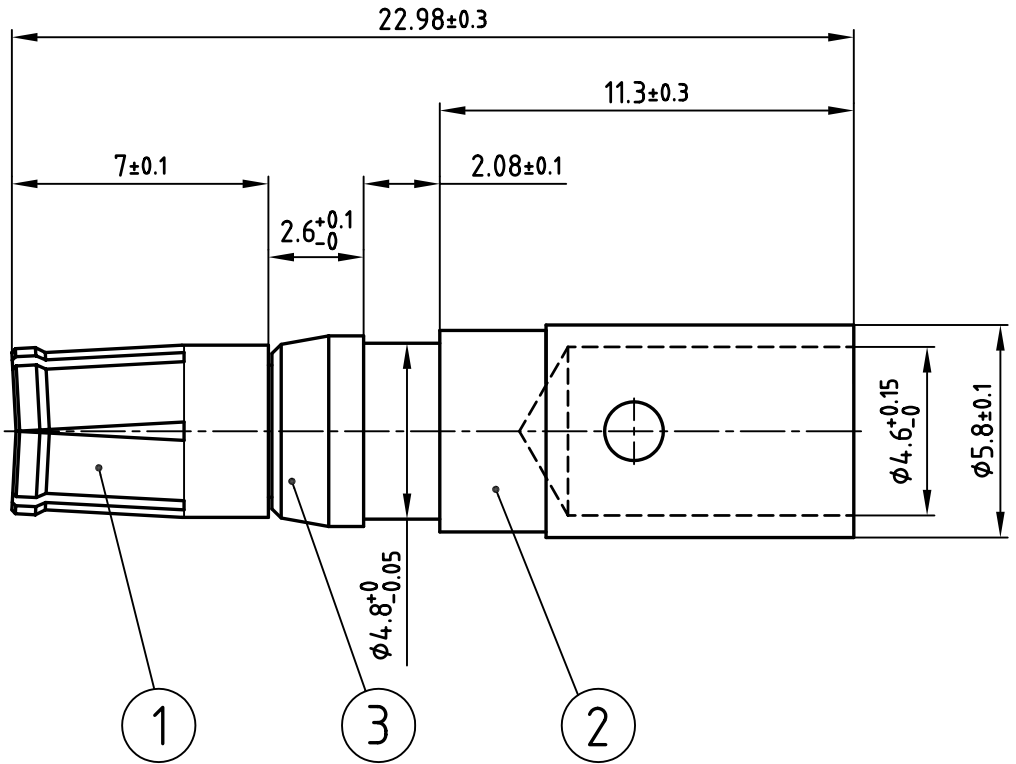


used for: D-SUB COMBINATION



NOTES:

- 1. MATERIAL: COPPER ALLOY
- 2. PLATING:
 ITEM 1: min. 30µ" HARD GOLD OVER min. 50µ" NICKEL
 ITEM 2: min. 8µ" HARD GOLD OVER min. 50µ" NICKEL
 ITEM 3: NICKEL PLATED

PART-NO.	A0 PART-NO.
CFMP004S103	A0677608
132C11049X	



THIS DRAWING MAY NOT BE COPIED OR REPRODUCED IN ANY WAY, AND MAY NOT BE PASSED ON TO A THIRD PARTY WITHOUT WRITTEN PERMISSION.
 OWNERSHIP AND COPYRIGHT OF CONEC GmbH
 DO NOT ALTER CAD DRAWING BY HAND

tolerance		ISO 2768-m			
2002	date	name			
drawn	12.02.	Parei			
appd.	12.02.	E. Mickenbecker			
norm					
d-old					
rev.	description	date	name		



scale:	5:1	
material:	SEE NOTES	
title:	HIGH POWER CONTACT FEMALE CRIMP VERSION 40A D-SUB COMBINATION	
dwg no:	AutoCAD 2000	DIN-A
	13K2IF0A	4
		sh: 1/1
part no:	SEE TABLE	

4 3 2 1

F

F

E

E

D

D

C

C

B

B

A

A

4 3 2 1