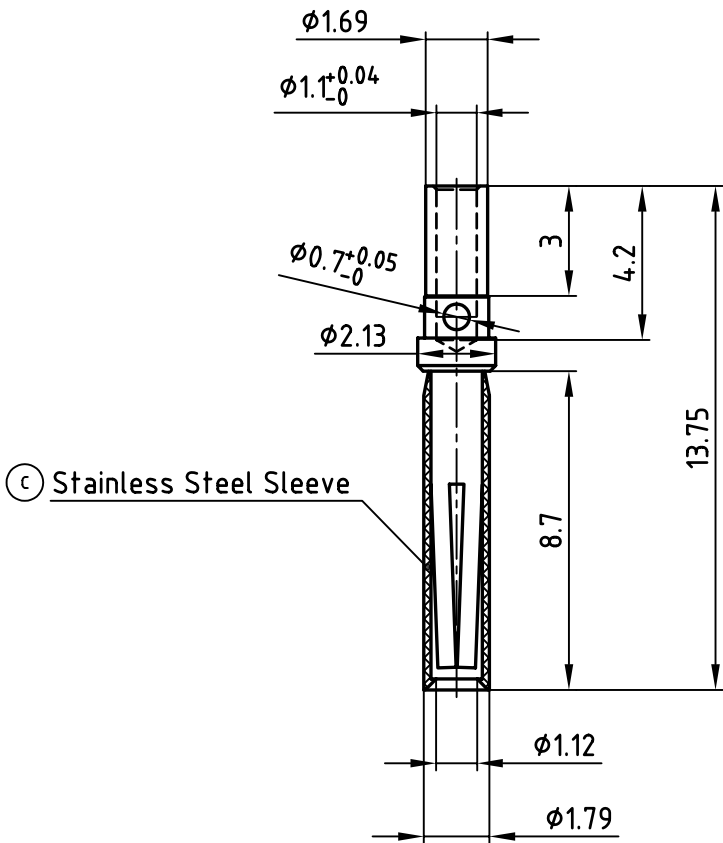
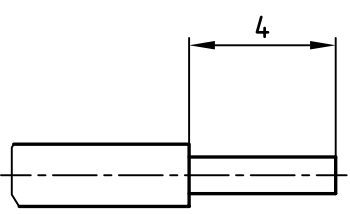


used for: D-SUB COMBINATION



Plating	Part-NO.
min. 30 μ " HARD GOLD OVER min. 50 μ " NICKEL	132C15019X
min. 50 μ " HARD GOLD OVER min. 50 μ " NICKEL	132J15019X (c)

(b) STRIPPING DIMENSIONS



NOTES:

- 1. MATERIAL: COPPER ALLOY
- 2. PLATING: SEE TABLE
- (b) 3. CRIMPING: USE CRIMP TOOL 360X10329X WITH TOOL INSERT 360X20039X
SELECTOR SETTINGS: 7 FOR AWG 20
6 FOR AWG 22
5 FOR AWG 24

THIS DRAWING MAY NOT BE COPIED OR REPRODUCED IN ANY WAY, AND MAY NOT BE PASSED ON TO A THIRD PARTY WITHOUT WRITTEN PERMISSION.
 OWNERSHIP AND COPYRIGHT OF CONEC GmbH
 DO NOT ALTER CAD DRAWING BY HAND

tolerance					
2002	date	name	SIGNAL CRIMP CONTACT SOCKET CONTACT Wire Size 20-24		
drawn	30.01.	Parei			
appd.	30.01.	E. Mickenbecker			
norm					
d-old					
2 x c	Ä 2193	21.03.2005	Lehmen	dwg no: AutoCAD 2000 16K1A471A part no: SEE TABLE	
2 x b	Ä 2177	02.03.2005	Lehmen		
rev.	description	date	name		



scale:	5:1	
material:	SEE NOTES	
title:	SIGNAL CRIMP CONTACT SOCKET CONTACT Wire Size 20-24	
dwg no:		AutoCAD 2000
part no:		SEE TABLE

DIN-A
4
sh: 1/1