



Eurostyle Screw Terminal Strips for Panel / Chassis Mounting

TYPE 323 (-HDS)

10 mm spacing - 1 to 12 poles



Distributor Stock Check

Series	Download PDF	3D Model	Can plug with	How to order	Color specifications	Print
--------	--------------	----------	---------------	--------------	----------------------	-------



RoHS WEEE Pb free compliant

Description

- standard version
- Recommended mounting hardware: M3.5 pan head screw (#6-32 pan head screw) or similar sized sheet metal screw, self-tapping screw or rivet.

Technical Data

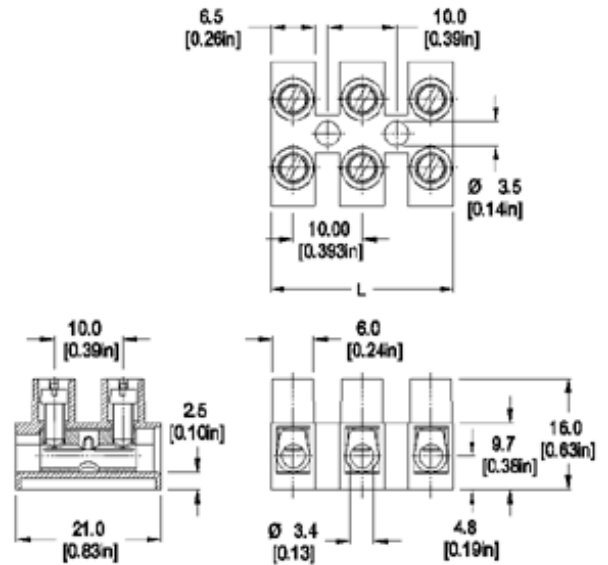
Center to Center Spacing: 10 mm (0.394 in.)

Nominal Cross Section:

2.5 mm² (3874 mils²)

Wire Stripping Length: 6 mm (0.25 in.)

Application



Dimensions: mm (in.)

Length of Connector (L)

L = No. of Poles x Center to Center Spacing - 3.5 mm

When locating connector, allow 0.5 mm clearance around it for process-induced variations.

Approval Information

UL File No.E69841

CSA File No.LR24322



The panel and chassis mounted series are ideal for connecting electrical control panels to external power sources, signal sources, other electrical panels and electrical loads of many types and sizes. The electrical panel's or electrical enclosure's internal components and circuitry are connected to their appropriate external electrical circuitry through these terminal blocks. The screw tightened connections result in high contact forces thus promoting safe wire secureness and retention, low electrical resistance and safe reusable connections. All wire retention screws are captive in their towers and they cannot fall out during transportation, installation and use. Wire protectors are available to protect small gauge stranded wires from screw damage. These terminal strips can be completely enclosed within the enclosures or be placed at an enclosure opening with one side accessible for external cabling and the other for internal wiring. They can be specially marked to your specifications.

Rating	Current(A)	Voltage(V)	Application group	AWG
UL	30	300	B,D	20-10
CSA	25	300	B,D,E	26-10

Screw Tightening Torque:

UL: 4.5 lbf·in
 CSA: 0.51 Nm

International Approvals:



[Top of page](#)

Material

Molding: Polyamide, self extinguishing to UL 94, V-2, color off-white

Temperature limits:

Short Time: 140°C (284°F)
Continuous: RTI 105°C (221°F)
Low Limit: -40°C (-40°F)

Comparative Tracking Index: CTI > 600

Oxygen Index Rating: 25%

Terminal Body: Nickel plated copper alloy

Wire Protector: Stainless steel strip

Screw: M3, Slotted head, zinc plated blue passivated, steel substrate

How to order

Item 323 (-HDS)

Options

- CN: Consecutive Numbering (hot stamped numbers)
- SM: Special Marking (please provide sketch)
- BS: Copper Alloy Screw
- PS: Clear Chromate Passivated, zinc plated, Steel Screws
- G05: Gold Plating (5 micro inches)
- G30: Gold Plating (30 micro inches)
- S30: Silver Plating (30 micro inches)

Note: Plated component for non HDS versions only: terminal body

Ordering Note: Series 300 Terminal Strips can be supplied in other colors. Can be supplied in polyamide UL 94 V-0. Please consult factory.

Request sample

Request quote

Quantity

Accessories

[BST Marking Strips for terminal strips.](#)

[Jumper Combs, Series 300-J.](#)

[Covers and Base Plates, Type 323.](#)

WIRE PROTECTOR:
with: - HDS

POLES:
01 to 12

323

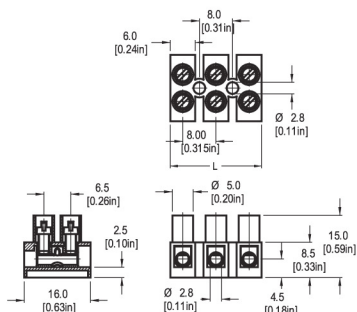
/

Add to shopping cart

Series 300

Types 302 (-HDS)

8 mm spacing • 1 to 12 poles

RoHS
WEEE

Dimensions: mm (in.) When locating connector, allow 0.5 mm clearance around it for process-induced variations.
Length of Connector (L) L = No. of Poles x Center to Center Spacing - 2 mm

DESCRIPTION

- Standard version
- Recommended mounting hardware: M2.5 pan head screw (#3-48 pan head screw).

APPLICATION

Due to high resistance to vibrations, these terminal strips serve in applications using line voltage motors or in construction vehicle. Terminal strips are also used in Heating/ventilation/air conditioning (HVAC) products.

TECHNICAL DATA

Center to Center Spacing: 8 mm (0.315 in.) Wire Stripping length: 5 mm (0.20 in.)
Nominal Cross Section: 1.5 mm² (2325 mils²)

APPROVAL INFORMATION

	Rating	Current (A)	Voltage (V)	AWG	Application Group	Screw Tightening Torque
UL File No.: E69841	UL	20	300	20-12	B,D	max. 3.5 lbf.in.
CSA File No.: LR24322	CSA	20	300	26-12	B,D,E	max. 0.4 Nm

UL 300V / C: if mounted on a suitable insulated surface, on standoffs, or equivalent means to maintain spacing from live parts to the mounting surface.

UL certified for multiple wiring 2 x 18 AWG solid/stranded.

Version HDS is CSA certified for 26-14 AWG.

International Approvals:

MATERIAL

MOLDING: Polyamide, self extinguishing to UL 94, V-2, off-white

TEMPERATURE LIMITS:	Short time:	140°C (284°F)
	Continuous:	RTI 105°C (221 °F)
	Low limit:	-40°C (-40°F)
	Comparative Tracking Index:	CTI > 600
	Oxygen Index Rating:	25%

Terminal Body: nickel plated copper alloy

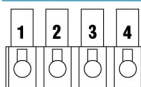
Wire Protector: stainless steel strip

Screw: yellow chromate passivated, zinc plated, steel, M2.6

ACCESSORIES

- BST Marking Strips.
- Jumper Combs, Series 300-J.

OPTIONS See How to Order. If more than one option is required, please separate each option with a dash (-).



CN: Consecutive Numbering (hot stamped Black numbers)

SM: Special Marking (please provide sketch)

BS: Copper Alloy Screws

PS: Clear chromate passivated, zinc plated, steel screws

G05: Gold Plating (5 micro inches)

G30: Gold Plating (30 micro inches)

S30: Silver Plating (30 micro inches)

(Plated components: for non HDS versions only: terminal body)

HOW TO ORDER

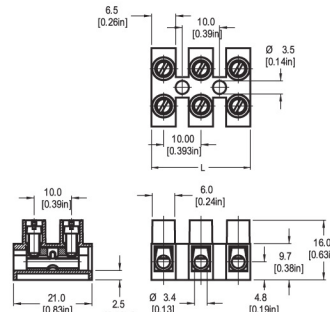
WIRE PROTECTOR:	POLES:	OPTIONS:
with: - HDS	01 to 12	CN, SM, BS, PS, G05, G30, S30
302	/	-

www.weco.ca/products/302 (-HDS)

Series 300

Types 323 (-HDS)

10 mm spacing • 1 to 12 poles



Dimensions: mm (in.) When locating connector, allow 0.5 mm clearance around it for process-induced variations.
Length of Connector (L) L = No. of Poles x Center to Center Spacing - 3.5 mm

DESCRIPTION

- Standard version
- Recommended mounting hardware: M3.5 pan head screw (#6-32 pan head screw).

APPLICATION

Due to high resistance to vibrations, these terminal strips serve in applications using line voltage motors or in construction vehicle. Terminal strips are also used in Heating/ventilation/air conditioning (HVAC) products.

TECHNICAL DATA

Center to Center Spacing: 10 mm (0.394 in.) Wire Stripping length: 6 mm (0.25 in.)
Nominal Cross Section: 2.5 mm² (3874 mils²)

APPROVAL INFORMATION

	Rating	Current (A)	Voltage (V)	AWG	Application Group	Screw Tightening Torque
UL File No.: E69841	UL	30	300	20-10	B,D	max. 4.5 lbf.in.
CSA File No.: LR24322	CSA	25	300	26-10	B,D,E	max. 0.51 Nm

UL 300V / C: if mounted on a suitable insulated surface, on standoffs, or equivalent means to maintain spacing from live parts to the mounting surface.

International Approvals:

MATERIAL

MOLDING: Polyamide, self extinguishing to UL 94, V-2, off-white

TEMPERATURE LIMITS:	Short time:	140°C (284°F)
	Continuous:	RTI 105°C (221 °F)
	Low limit:	-40°C (-40°F)
	Comparative Tracking Index:	CTI > 600
	Oxygen Index Rating:	25%

Terminal Body: nickel plated copper alloy

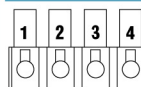
Wire Protector: stainless steel strip

Screw: yellow chromate passivated, zinc plated, steel, M3

ACCESSORIES

- BST Marking Strips.
- Covers and Base Plates, Type 323.
- Jumper Combs, Series 300-J.

OPTIONS See How to Order. If more than one option is required, please separate each option with a dash (-).



CN: Consecutive Numbering (hot stamped Black numbers)

SM: Special Marking (please provide sketch)

BS: Copper Alloy Screws

PS: Clear chromate passivated, zinc plated, steel screws

G05: Gold Plating (5 micro inches)

G30: Gold Plating (30 micro inches)

S30: Silver Plating (30 micro inches)

(Plated components: for non HDS versions only: terminal body)

HOW TO ORDER

WIRE PROTECTOR:	POLES:	OPTIONS:
with: - HDS	01 to 12	CN, SM, BS, PS, G05, G30, S30
323	/	-

www.weco.ca/products/323 (-HDS)

