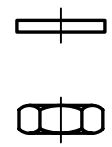
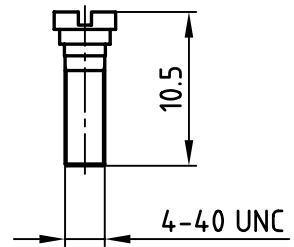
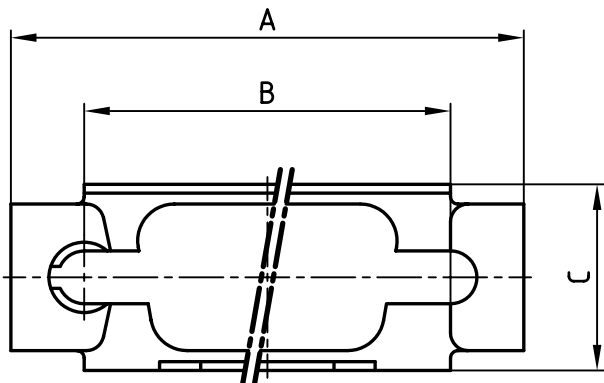


used for: D-SUB



No. of Pos.	A	B	C	Part No.
9	35.0	25.0	12.7	160X10689X
15	43.7	33.3	12.7	160X10699X
25	57.4	47.0	12.7	160X10709X
37	73.9	63.5	12.7	160X10719X
50	72.5	61.1	15.5	160X10729X

**A set consists of:**

- 1 frame
- 2 screws UNC 4-40
- 2 washers
- 2 nuts UNC 4-40

**Material and plating:**

- frame - stainless steel
- screws - steel; 5-7µ Zn thickfilm passivated
- washers - steel; 5-7µ Zn thickfilm passivated
- nuts - steel; 5-7µ Zn thickfilm passivated



THIS DRAWING MAY NOT BE COPIED OR REPRODUCED IN ANY WAY, AND MAY NOT BE PASSED ON TO A THIRD PARTY WITHOUT WRITTEN PERMISSION.  
 OWNERSHIP AND COPYRIGHT OF CONEC GmbH  
 DO NOT ALTER CAD DRAWING BY HAND

tolerance		DIN 7168-m			
1995	date	name		title:	
drawn	18.07.	Barcinski		<b>Slide lock Typ 4</b> with locking bolt 9 - 50 pos.	
appd.	18.07.	Mickenbecker			
norm					
d-old					
rev.	description	date	name		

scale:	2:1
material:	
dwg no:	AutoCAD/REL.10
part no:	SEE TABLE
DIN-A	4
sh:	1/1