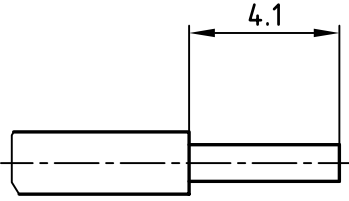
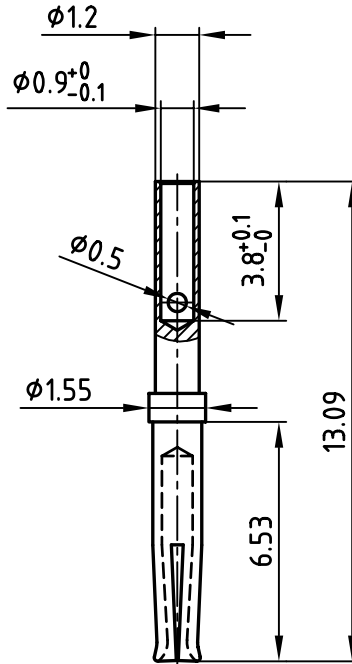


(b) STRIPPING DIMENSIONS



used for: D-SUB HD



(b) NOTES:

1. CONTACTS: PHOSPHOR BRONCE
2. PLATING: 8 μ m HARD GOLD OVER min. 50 μ m NICKEL
3. CRIMPING: USE CRIMP TOOL 360X10329X WITH TOOL INSERT 360X10629X
SELECTOR SETTINGS: 4 for AWG 22
3 for AWG 24
2 for AWG 26
1 for AWG 28

Directive 2002/95/EC
„RoHS“
Compliant

THIS DRAWING MAY NOT BE COPIED OR REPRODUCED IN ANY WAY, AND MAY NOT BE PASSED ON TO A THIRD PARTY WITHOUT WRITTEN PERMISSION.
OWNERSHIP AND COPYRIGHT OF CONEC GmbH
DO NOT ALTER CAD DRAWING BY HAND

		tolerance ISO 2768-m				
		2001	date			name
		drawn	12.03.			Parei
		appd.	12.03.			E. Mickenbecker
		norm				
		d-old				
2 x b	Ä 2647	11.01.2007	Lehmen			
a	Origin					
rev.	description	date	name			

scale:	5:1	
material:	SEE NOTES	
title:	HD CRIMP SOCKET CONTACT	
dwg no:	AutoCAD 2000	DIN-A
	16K1A153A	4
part no:	162A18419X	sh: 1/1