

Series image - Reference only

EU RoHS

China RoHS

ELV and RoHS Compliant



Duration at Max. Process Temperature (seconds) 5

Lead-free Process Capability

Wave Capable (TH only)

Max. Cycles at Max. Process Temperature

1

Process Temperature max. C

235

Search Parts in this Series

[41791 Series](#)

Mates With

[3069](#), [2139](#), [2145](#), [6442](#), [7674](#), [7675](#), [41695](#), [41815](#)

Part Number: **0026604030**

Status: **Active**

Description: 3.96mm (.156") Pitch KK® Solid Header, Vertical, Friction Lock, 3 Circuits, Tin (Sn) Plating

Documents:

- [Drawing \(PDF\)](#)
- [Product Specification PS-08-50 \(PDF\)](#)
- [3D Model](#)
- [Packaging Specification \(PDF\)](#)
- [Related Catalog Page \(PDF\)](#)

Order Products:

[Check Distributor Inventory](#)

Part Detail: [\(show all\)](#)○ **General**○ **Physical**○ **Electrical**○ **Material Info**○ **Reference - Drawing Numbers****General**

Product Family	PCB Headers
Series	41791
Application	Wire-to-Board
Product Name	KK®

Physical

Breakaway	No
Circuits (Loaded)	3
Circuits (maximum)	3
Color - Resin	Natural
Durability (mating cycles) min	25 cycles
Flammability	94V-0
Lock to Mating Part	Yes
Material - Metal	Brass
Material - Plating Mating	Tin
Material - Plating Termination	Tin
Material - Resin	Polyester
Number of Rows	1
Orientation	Vertical
PC Tail Length (in)	0.140 In
PC Tail Length (mm)	3.56 mm
PCB Locator	No
PCB Retention	None
PCB Thickness Recommended (in)	0.062 In
PCB Thickness Recommended (mm)	1.60 mm
Packaging Type	Bag
Pitch - Mating Interface (in)	0.156 In
Pitch - Mating Interface (mm)	3.96 mm
Plating min: Mating (uin)	200
Plating min: Mating (um)	5
Plating min: Termination (uin)	200
Plating min: Termination (um)	5
Polarized to Mating Part	Yes
Polarized to PCB	No

Shrouded	Partial
Stackable	Yes
Temperature Range - Operating	0°C to +75°C
Termination Interface: Style	Through Hole

Electrical

CSA	LR19980
Current - Maximum	7.00 Amp
UL	E29179
Voltage - Maximum	250V

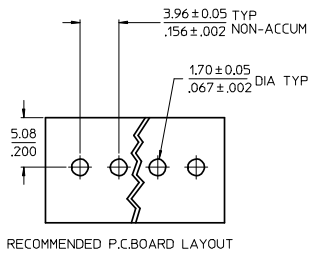
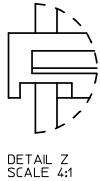
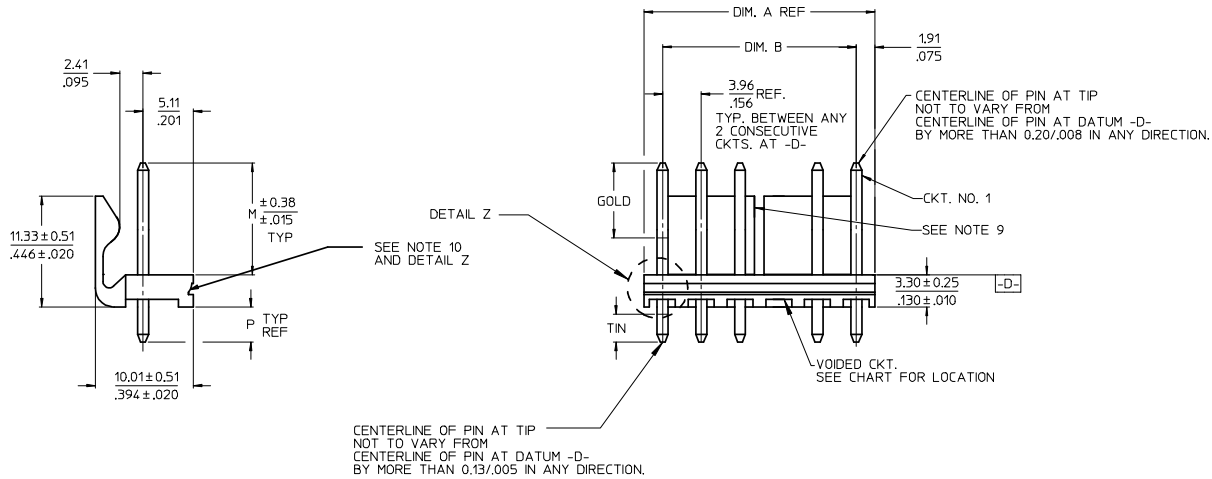
Material Info

Old Part Number	41791-0003
-----------------	------------

Reference - Drawing Numbers

Product Specification	PS-08-50
Sales Drawing	SDA-41791

CKT	DIM. A	DIM. B	SLOT LOC BETWEEN CKTS
2	7.77 .306	3.96±0.05 .156±.002	NONE
3	11.73 .462	7.92±0.08 .312±.003	NONE
4	15.70 .618	11.89±0.08 .468±.003	NONE
5	19.66 .774	15.85±0.10 .624±.004	NONE
6	23.62 .930	19.81±0.10 .780±.004	3 & 4
7	27.58 1.086	23.77±0.10 .936±.004	4 & 5
8	31.55 1.242	27.74±0.13 1.092±.005	4 & 5
9	35.51 1.398	31.70±0.13 1.248±.005	5 & 6
10	39.47 1.554	35.66±0.13 1.404±.005	5 & 6
11	43.43 1.710	39.62±0.15 1.560±.006	6 & 7
12	47.40 1.866	43.59±0.15 1.716±.006	4 & 5 8 & 9
13	51.36 2.022	47.55±0.15 1.872±.006	4 & 5 9 & 10
14	55.32 2.178	51.51±0.18 2.028±.007	5 & 6 9 & 10
15	59.28 2.334	55.47±0.18 2.184±.007	5 & 6 10 & 11
16	63.25 2.490	59.44±0.18 2.340±.007	5 & 6 11 & 12
17	67.21 2.646	63.40±0.20 2.496±.008	6 & 7 11 & 12
18	71.17 2.802	67.36±0.20 2.652±.008	6 & 7 12 & 13



- NOTES:
- MATERIAL: HEADER-GLASS FILLED POLYESTER, 94V-0, MOLDED NATURAL (WHITE).
 - FINISH: (102-TIN) OVERALL TIN: 0.00508/0.00200 MIN OVER 0.00254/0.00100 MIN COPPER. (122-TIN) OVERALL TIN: 0.00381/0.00150 MIN OVER 0.00076/0.00030 MIN NICKEL. (208-15 GOLD) SELECT GOLD: 0.00038/0.00015 MIN, SELECT TIN: 0.00254/0.00100 MIN, OVERALL NICKEL UNDERPLATE: 0.00127/0.00050 MIN. (228-30 GOLD) SELECT GOLD: 0.00076/0.00030 MIN, SELECT TIN: 0.00254/0.00100 MIN, OVERALL NICKEL UNDERPLATE: 0.00127/0.00050 MIN. (501-GOLD) OVERALL GOLD: 0.00051/0.00020 MIN OVER 0.00076/0.00030 MIN NICKEL.
 - THE PRIMARY SHIPPING CARTON WILL BE LABELED "COMPLIANT TO RoHS DIRECTIVE 2002/95/EC AND ELV ANNEX II OF DIRECTIVE 2000/53/EC". CARTONS WITHOUT THIS LABEL MAY CONTAIN PRODUCT WITH TIN-LEAD PLATING.
 - PRODUCT SPECIFICATION AND PROCESS PARAMETERS: SEE PS-08-50.
 - PACKAGING INFORMATION: SEE CHARTS.
 - SOLDERABILITY: PER SMES-152.
 - PIN PUSH-OUT FORCE, PRIOR TO SOLDERING, A 3 LB. MINIMUM FORCE (IN EITHER DIRECTION)
 - PARTS ARE STACKABLE END TO END ON 3.96/.156 CENTERS.
 - THIS PART CONFORMS TO CLASS B REQUIREMENTS OF COSMETIC SPECIFICATION PS-45499-002.
 - SLOTS ON BACKWALL ARE BETWEEN CIRCUITS. SEE CHART FOR LOCATION.
 - FEATURE MAY OR MAY NOT EXTEND ACROSS THE ENTIRE FACE OF THE PART "SEE DETAIL Z".

2-*	P8
1	P9
SHT	REV

ADD EDP FOR -0467
 EC NO: UCP2008-2196
 DRWN: AELHAG 2008/03/19
 CHKD: ADERR 2008/03/19
 APPR: FSMITH 2008/03/26
 P9

QUALITY SYMBOLS
 ▽=0
 ▽=0

	GENERAL TOLERANCES (UNLESS SPECIFIED)	
	mm	INCH
4 PLACES	± ---	± ---
3 PLACES	± ---	± .010
2 PLACES	± 0.25	± .015
1 PLACE	± 0.38	± ---
ANGULAR ±1/2°		

DRAFT WHERE APPLICABLE
 MUST REMAIN WITHIN DIMENSIONS

DIMENSION STYLE	
MM/IN	
DRAWN BY	DATE
JSCHAFFER	11-07-03
CHECKED BY	DATE
KSAMIEC	11-10-03
APPROVED BY	DATE
MARGULIS	11-17-03
MATERIAL NO.	
SEE CHART	
SIZE	
B	

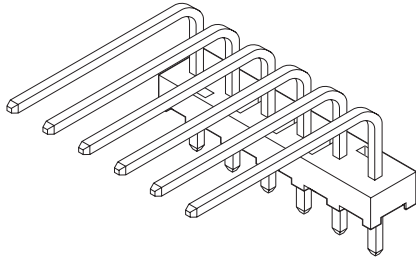
SCALE	DESIGN UNITS	THIRD ANGLE PROJECTION
2:1	INCH	☉
TITLE		
KK 156 HEADER ASSEMBLY FRICTION LOCK VERTICAL SOLID BODY W/O PEGS		
MATERIAL NO.		
SEE CHART		
DOCUMENT NO.		
SDA-41791		
SHEET NO.		
1 OF *		

OPTIONS	Group	A-41791-0002/0018	Group	A-41791-0832/0848	Group	A-41791-0849/0865	Group	A-41791-0773/0785
	Header No:	41790-0002/0018	Header No:	41790-0002/0018	Header No:	41790-0002/0018	Header No:	41790-0006/0018
	Pin No:	2161-94(102)	Pin No:	43294-0209	Pin No:	43294-0210	Pin No:	2161-94(102)
	Plating:	102 – TIN	Plating:	208 – 15 GOLD	Plating:	228 – 30 GOLD	Plating:	102 – TIN
	Pin Length L	18.29 / .720	Pin Length L	18.29/. 720	Pin Length L	18.29/. 720	Pin Length L	18.29 / .720
	Mating M	11.43 / .450	Mating M	11.43/. 450	Mating M	11.43/. 450	Mating M	11.43 / .450
	Gold Loc G	N/A	Gold Loc G	6.86/. 270	Gold Loc G	6.86/. 270	Gold Loc G	N/A
	PC Tail P	3.56 / .140	PC Tail P	3.56/. 140	PC Tail P	3.56/. 140	PC Tail P	3.56 / .140
	Tin Loc T	OVERALL	Tin Loc T	4.06/. 160	Tin Loc T	4.06/. 160	Tin Loc T	OVERALL
	Voided Ckts	NONE	Voided Ckts	NONE	Voided CKts	NONE	Voided Ckts	3, 6
Pack Per	PK-41791-001	Pack Per	PK-41791-001	Pack Per	PK-41791-001	Pack Per	PK-41791-001	
Ckts	Material No	Engineer Number	Material No	Engineer Number	Material No	Engineer Number	Material No	Engineer Number
2	26-60-4020	A-41791-0002	41791-0832	A-41791-0832	41791-0849	A-41791-0849		
3	26-60-4030	A-41791-0003	41791-0833	A-41791-0833	41791-0850	A-41791-0850		
4	26-60-4040	A-41791-0004	41791-0834	A-41791-0834	41791-0851	A-41791-0851		
5	26-60-4050	A-41791-0005	41791-0835	A-41791-0835	41791-0852	A-41791-0852		
6	26-60-4060	A-41791-0006	41791-0836	A-41791-0836	41791-0853	A-41791-0853		
7	26-60-4070	A-41791-0007	41791-0837	A-41791-0837	41791-0854	A-41791-0854	41791-0774	A-41791-0774
8	26-60-4080	A-41791-0008	41791-0838	A-41791-0838	41791-0855	A-41791-0855		
9	26-60-4090	A-41791-0009	41791-0839	A-41791-0839	41791-0856	A-41791-0856		
10	26-60-4100	A-41791-0010	41791-0840	A-41791-0840	41791-0857	A-41791-0857		
11	26-60-4110	A-41791-0011	41791-0841	A-41791-0841	41791-0858	A-41791-0858		
12	26-60-4120	A-41791-0012	41791-0842	A-41791-0842	41791-0859	A-41791-0859		
13	26-60-4130	A-41791-0013	41791-0843	A-41791-0843	41791-0860	A-41791-0860		
14	26-60-4140	A-41791-0014	41791-0844	A-41791-0844	41791-0861	A-41791-0861		
15	26-60-4150	A-41791-0015	41791-0845	A-41791-0845	41791-0862	A-41791-0862		
16	26-60-4160	A-41791-0016	41791-0846	A-41791-0846	41791-0863	A-41791-0863		
17	26-60-4170	A-41791-0017	41791-0847	A-41791-0847	41791-0864	A-41791-0864		
18	26-60-4180	A-41791-0018	41791-0848	A-41791-0848	41791-0865	A-41791-0865		

P8	REV: <u>ECR/ECN INFORMATION</u>	TITLE: KK 156 HEADER ASSEMBLY FRICTION LOCK VERTICAL SOLID BODY W/O PEGS	SHEET No. - 2 -
	EC NO.: UCP2008-2196		
	DATE: 3/26/2008		
<u>DOCUMENT NUMBER:</u> SDA- 41791	<u>CREATED / REVISED BY:</u> AELHAG	<u>CHECKED BY:</u> ADERR	<u>APPROVED BY:</u> FSMITH

3.96mm (.156") Pitch KK[®] Solid Header

41772 Right Angle Without Pegs



Circuits	Order No.			
	Tin	15 μ " Select Gold	30 μ " Select Gold	Overall Gold
2	26-60-3020	41772-0463	41772-0480	26-61-3020
3	26-60-3030	41772-0464	41772-0481	26-61-3030
4	26-60-3040	41772-0465	41772-0482	26-61-3040
5	26-60-3050	41772-0466	41772-0483	26-61-3050
6	26-60-3060	41772-0467	41772-0484	26-61-3060
7	26-60-3070	41772-0468	41772-0485	26-61-3070
8	26-60-3080	41772-0469	41772-0486	26-61-3080
9	26-60-3090	41772-0470	41772-0487	26-61-3090
10	26-60-3100	41772-0471	41772-0488	26-61-3100

Circuit number designation is for ordering purposes only, check corresponding circuit designation on mating connector

Features and Benefits

- Sizes 2 to 18 circuits
- Optional voided circuits available (contact Molex)
- Various pin lengths available (contact Molex)
- End-to-end stackable

Reference Information

Product Specification: PS-08-50
 Packaging: Bag
 UL File No.: E29179
 CSA File No.: LR19980
 TUV File No.: R75108
 Mates With: 2139, 2145, 3069, 6442, 7674, 7675, 41695 and 41815
 Designed In: Inches

Electrical

Voltage: 250V
 Current: 7.0A
 Contact Resistance: 6 milliohms max.
 Dielectric Withstanding Voltage: 1500V
 Insulation Resistance: 50,000 Megohms min.

Mechanical

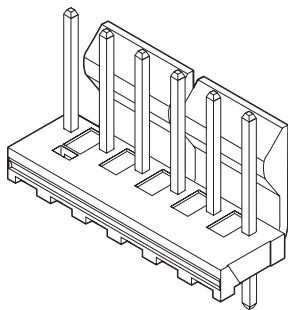
Durability:
 Tin—25 cycles max.
 Gold—100 cycles max.

Physical

Housing: Polyester, UL 94V-0
 Contact: Brass, 1.14mm (.045") square
 Plating: See Table
 Operating Temperature: -40 to +105°C

3.96mm (.156") Pitch KK[®] Solid Header

41791 Vertical, Friction Lock



Circuits	Order No.				Lead-free
	Tin	15 μ " Select Gold	30 μ " Select Gold	Overall Gold	
2	26-60-4020	41791-0832	41791-0849	26-61-4020	Yes
3	26-60-4030	41791-0833	41791-0850	26-61-4030	
4	26-60-4040	41791-0834	41791-0851	26-61-4040	
5	26-60-4050	41791-0835	41791-0852	26-61-4050	
6	26-60-4060	41791-0836	41791-0853	26-61-4060	
7	26-60-4070	41791-0837	41791-0854	26-61-4070	
8	26-60-4080	41791-0838	41791-0855	26-61-4080	
9	26-60-4090	41791-0839	41791-0856	26-61-4090	
10	26-60-4100	41791-0840	41791-0857	26-61-4100	

Circuit number designation is for ordering purposes only, check corresponding circuit designation on mating connector

Features and Benefits

- Sizes 2 to 18 circuits
- Provides left to right polarization when mated with 41695 or 43061 .156" crimp housing with the optional polarizing ribs
- Various pin lengths available
- Voided circuits available (contact Molex)
- Passive locking feature is used to maintain interconnection, ideal for high vibration applications
- End-to-end stackable

Reference Information

Product Specification: PS-08-50
 Packaging: Bag
 UL File No.: E29179
 CSA File No.: LR19980
 TUV File No.: R75108
 Mates With: 2139, 2145, 3069, 6442, 7674, 7675, 41695 and 41815
 Designed In: Inches

Electrical

Voltage: 250V
 Current: 7.0A
 Contact Resistance: 6 milliohms max.
 Dielectric Withstanding Voltage: 1500V
 Insulation Resistance: 50K Megohms min.

Mechanical

Durability: Tin—25 cycles max.
 Gold—100 cycles max.

Physical

Housing: Polyester, UL 94V-0
 Contact: Brass, 1.14mm (.045") pin
 Plating: See Table
 Operating Temperature: 0 to +75°C

Circuits	Order No.			
	Tin	15 μ " Select Gold	30 μ " Select Gold	Overall Gold
11	26-60-3110	41772-0472	41772-0489	26-61-3110
12	26-60-3120	41772-0473	41772-0490	26-61-3120
13	26-60-3130	41772-0474	41772-0491	26-61-3130
14	26-60-3140	41772-0475	41772-0492	26-61-3140
15	26-60-3150	41772-0476	41772-0493	26-61-3150
16	26-60-3160	41772-0477	41772-0494	26-61-3160
17	26-60-3170	41772-0478	41772-0495	26-61-3170
18	26-60-3180	41772-0479	41772-0496	26-61-3180

Circuits	Order No.				Lead-free
	Tin	15 μ " Select Gold	30 μ " Select Gold	Overall Gold	
11	26-60-4110	41791-0841	41791-0858	26-61-4110	Yes
12	26-60-4120	41791-0842	41791-0859	26-61-4120	
13	26-60-4130	41791-0843	41791-0860	26-61-4130	
14	26-60-4140	41791-0844	41791-0861	26-61-4140	
15	26-60-4150	41791-0845	41791-0862	26-61-4150	
16	26-60-4160	41791-0846	41791-0863	26-61-4160	
17	26-60-4170	41791-0847	41791-0864	26-61-4170	
18	26-60-4180	41791-0848	41791-0865	26-61-4180	