

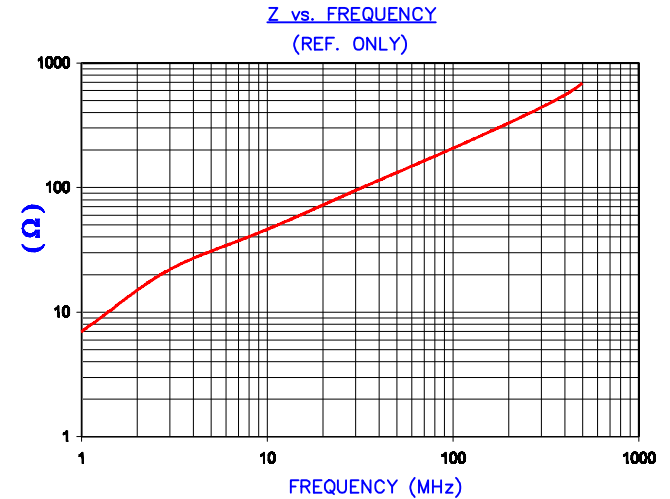
DETAIL "A"
CHAMFER
SCALE: 6:1

UNCONTROLLED DOCUMENT

NOTES: UNLESS OTHERWISE SPECIFIED.

- PART TO BE FREE OF SIGNIFICANT COSMETIC BLEMISHES OR DISCOLORATION VISIBLE BY THE NAKED EYE FROM A DISTANCE OF 2 METERS. (REFERENCE MASTER VISUAL COMPARISON SAMPLES).

IMPEDANCE (Z)			
Frequency	25 MHz	100 MHz	300 MHz
Nominal (REF)	84 Ω	211 Ω	440 Ω
Minimum	- Ω	169 Ω	- Ω

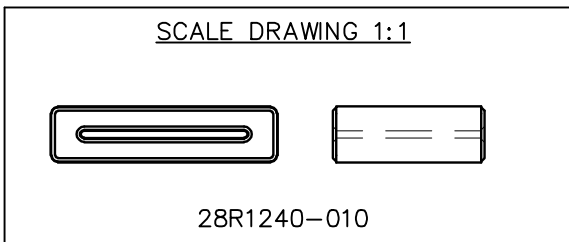


AGILENT E4991A Impedance/Material Analyzer
HP 16082A Test Fixture, REF # 3016

FERRITE CORE DIMENSIONS (SPEC):mm[Inches]

A	31.40 [1.236]	+	0.51 [.020]
B	23.00 [.906]	+	0.38 [.015]
C	21.00 [.827]	+	0.64 [.025]
D	7.75 [.305]	+	0.38 [.015]
E	1.00 [.039]	+	0.38 [.015]

WEIGHT/1000 22.63 kgs [49.89 Lbs]



DIMENSIONS ARE IN INCHES (mm).				THIS DOCUMENT CONTAINS INFORMATION WHICH IS PROPRIETARY AND CONFIDENTIAL TO STEWARD. NO PRODUCTION OR PUBLICATION OF THIS DOCUMENT IN WHOLE OR IN PART SHALL BE MADE WITHOUT WRITTEN AUTHORIZATION FROM STEWARD.							
G	UPDATE Z SPEC AND COMPANY LOGO	07/27/07	JRK								
F	ADD NOTE 1	04/19/04	JRK								
E	UPDATE MIN Z SPEC @ 100 Mhz, ADD REF #	02/02/04	JRK								
D	UPDATE NEW FORMAT AND Z SPECS	02/26/03	JRK								
C	NEW CNZ FORMAT ADD Z CURVE	07/18/02	JRK								
B	UPDATE FORMAT ADD CORNER RADIUS, UPDATE Z SPECS, ADD 25 MHz TO ELECT TESTING, CHG TOLS ON E DIM FROM 0.50 [.020]	01/09/02	JRK								
A	ORIGINAL DRAFT	07/27/99	JAJ								
REV	DESCRIPTION	DATE	INT								
PROJECT/PART NUMBER: 28R1240-010								REV: G	PART TYPE: FERRITE RIBBON CORE	DRAWN BY: JAJ	
DATE: 07/27/99								SCALE: 2 : 1	MATERIAL: NiZn FERRITE		
CAD # 28R1240-010-G				TOOL # R1240							