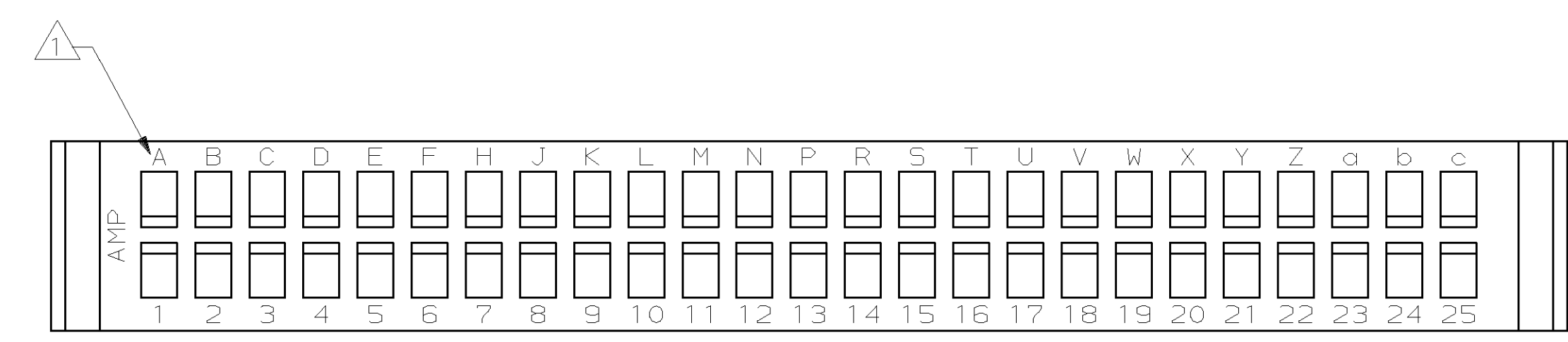
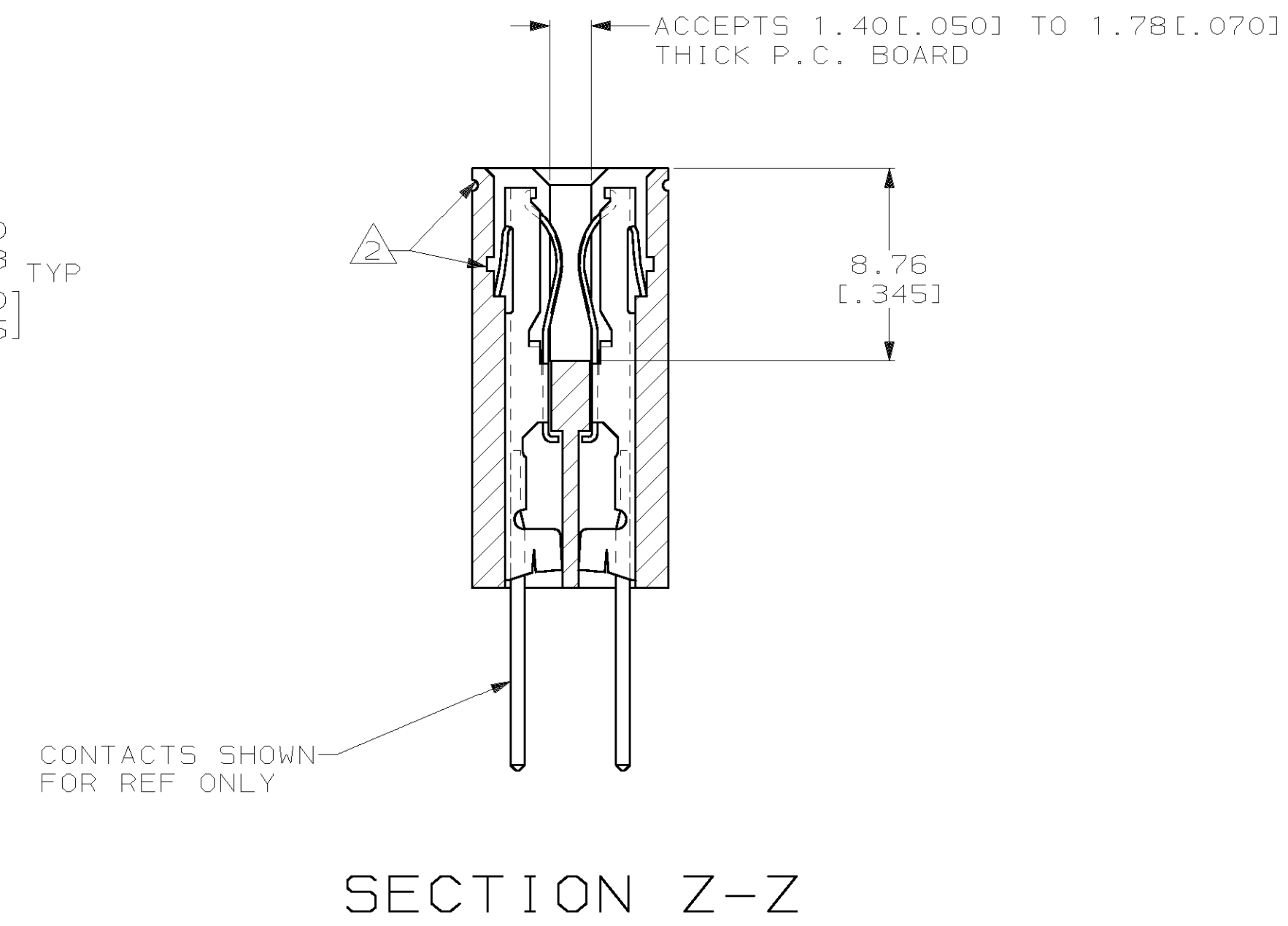
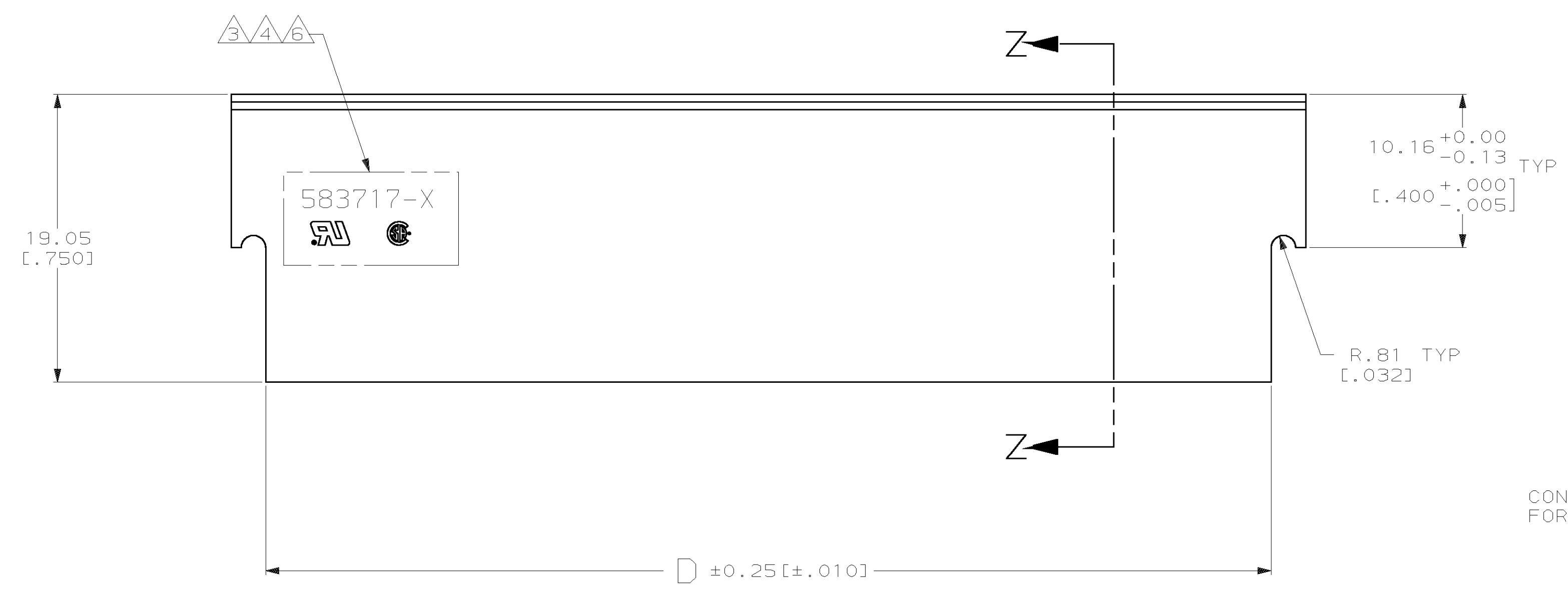
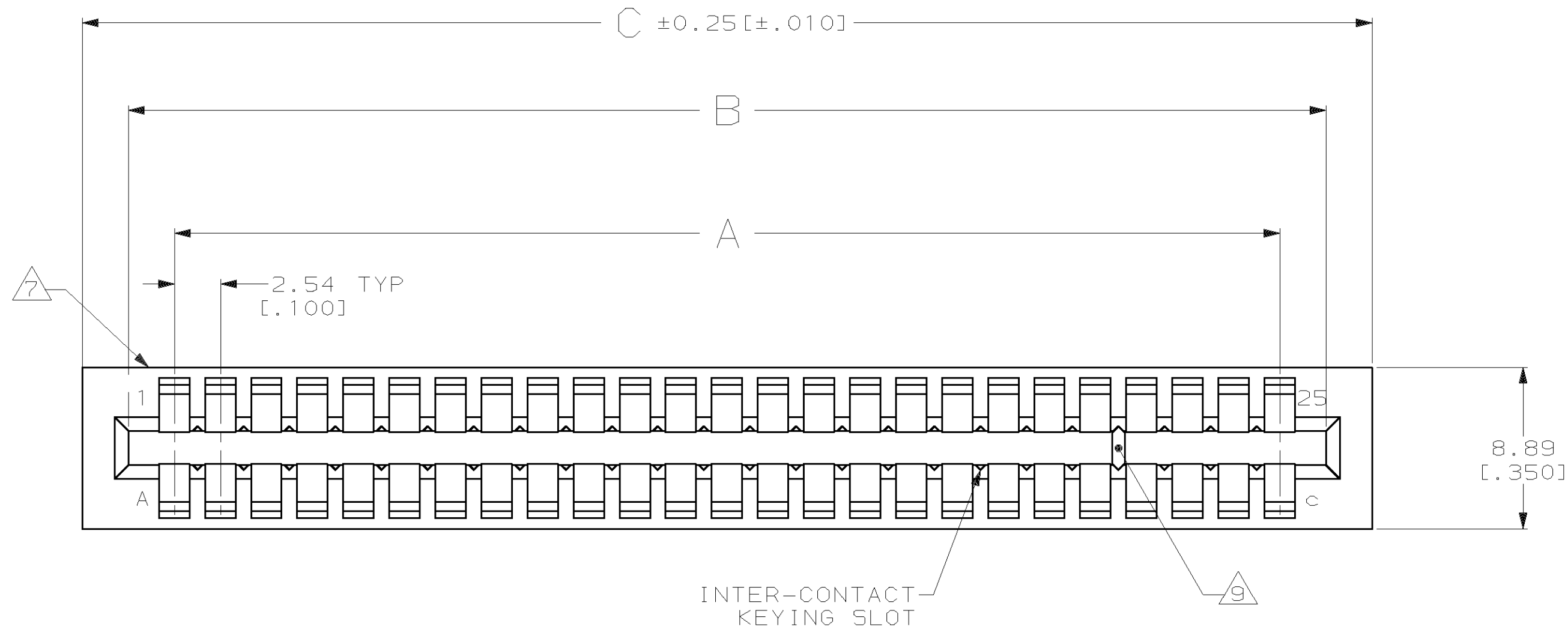


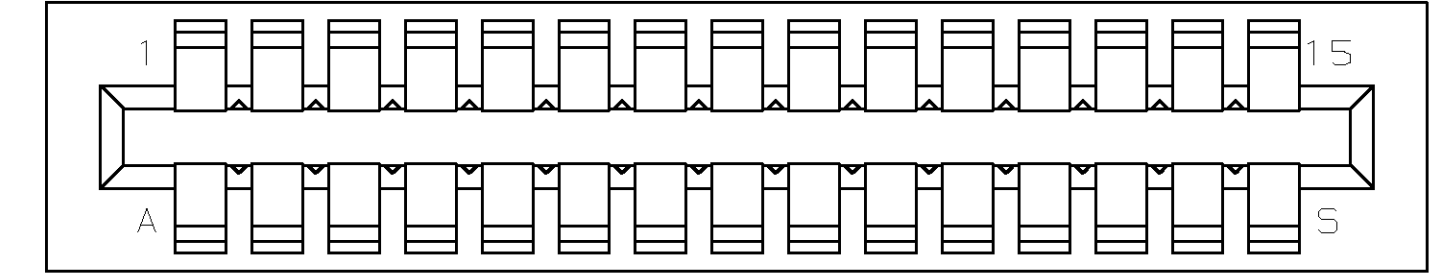
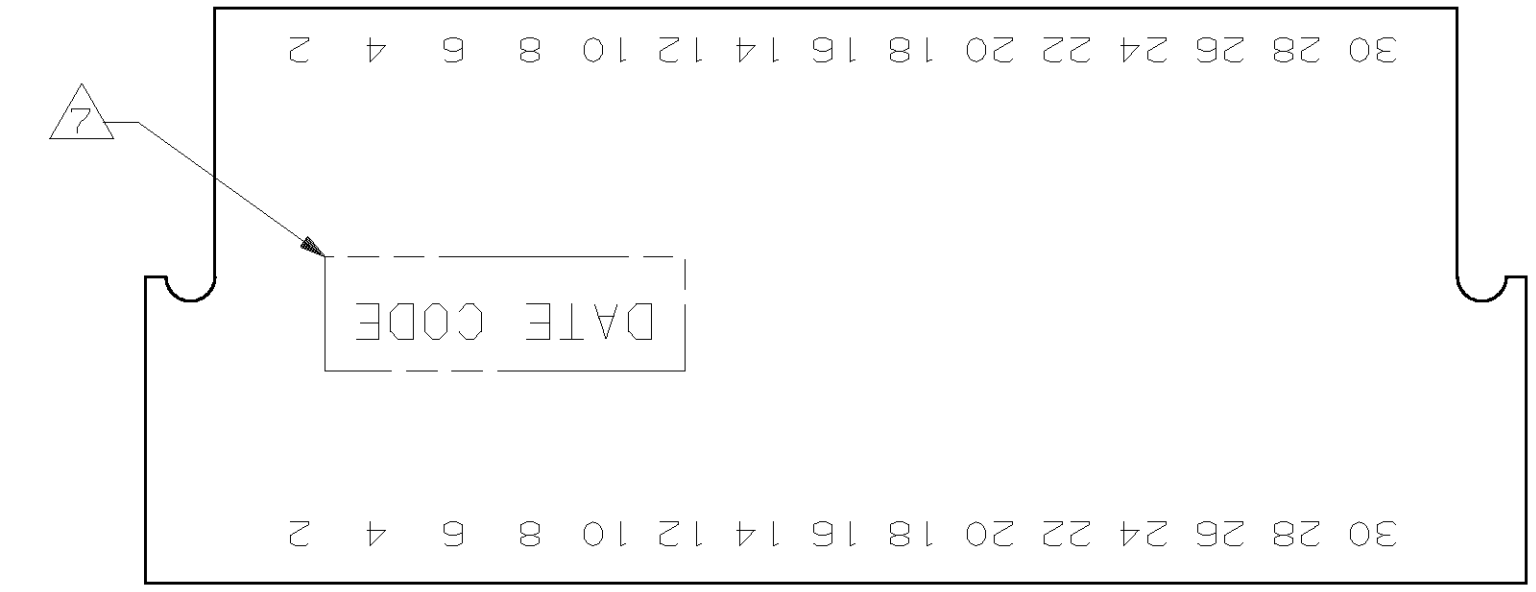
LOC	DIST	P	F	ZONE	LTR	DESCRIPTION	DATE	APPD
FT	22							
				V		ADD -45 PER EC 063C-148-99	28 SEP 99	MM
				W		ADDED -46 PER EC 063C-85-00	03 MAR 00	MM
				Y		ADDED -47 PER EC 063C-101-00	03 MAR 00	MM
				Z		REACTIVATED -9 PER EC 063C-118-00	21 MAR 00	MM



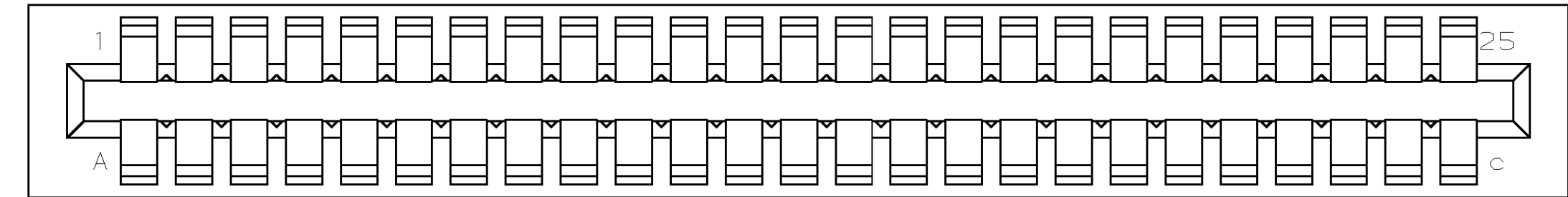
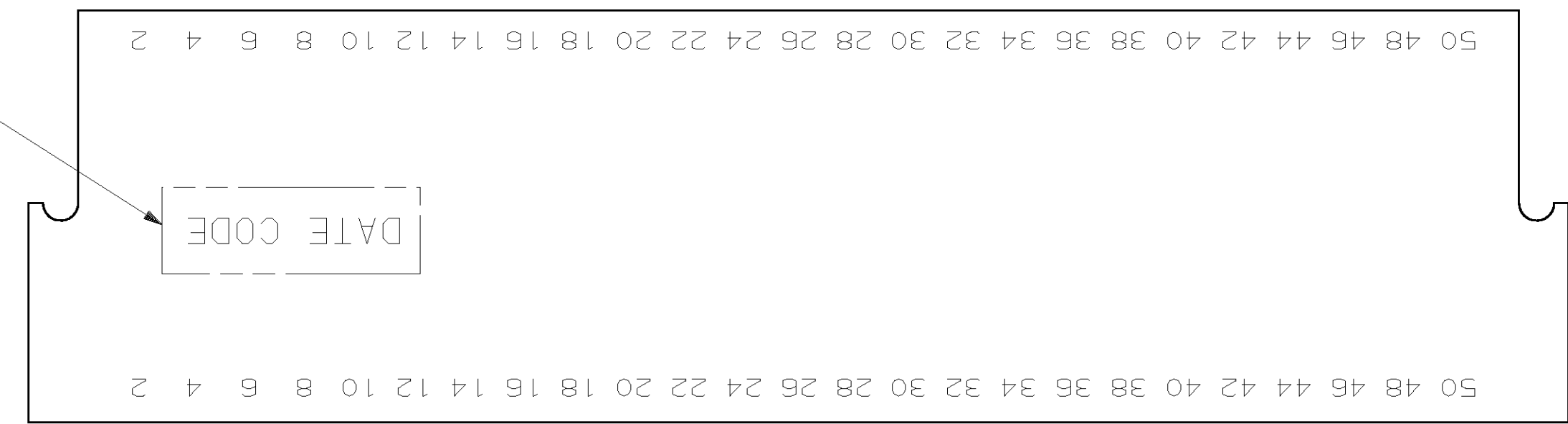
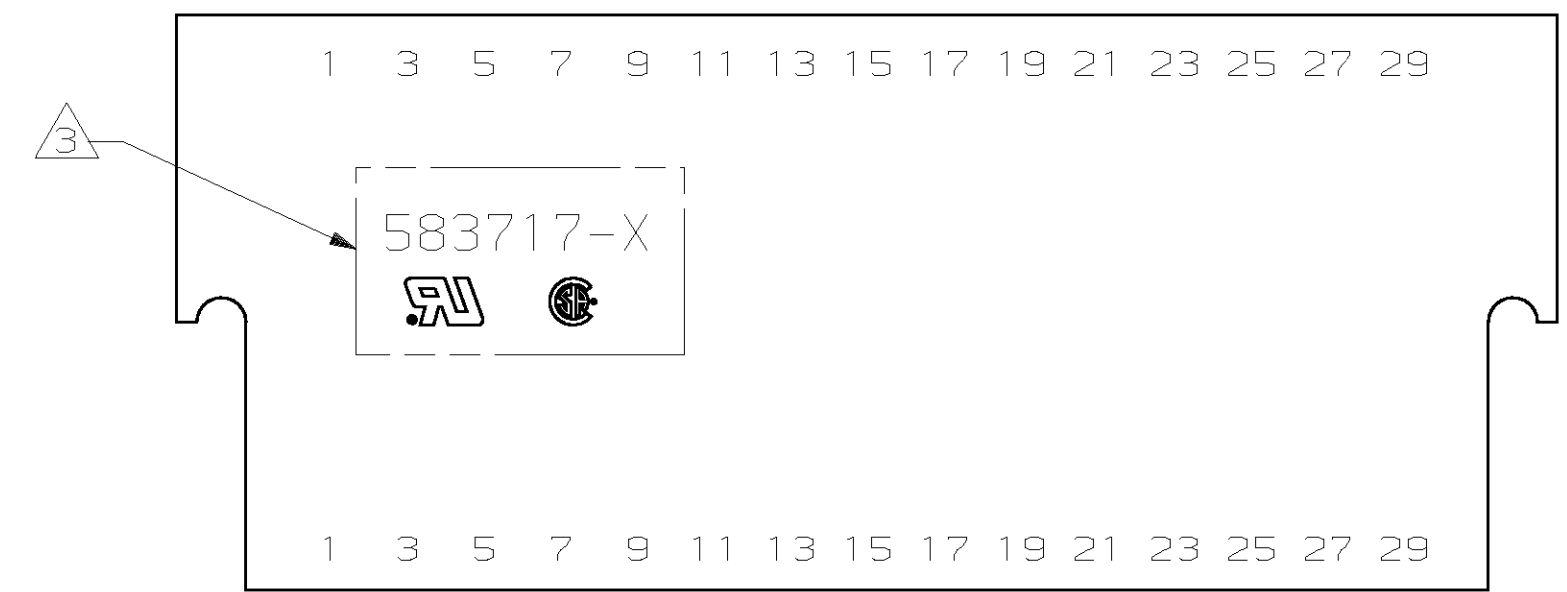
THIS DRAWING IS A CONTROLLED DOCUMENT FOR AMP INCORPORATED. IT IS SUBJECT TO CHANGE AND THE CONTROLLING ENGINEERING ORGANIZATION SHOULD BE CONTACTED FOR THE LATEST REVISION.

DO NOT SCALE PRINT. UNLESS SPECIFIED DIMENSIONS IN mm [INCHES] TOLERANCES ON:		DR 12-10-92 J GALLUCCI BG		PART NO	
2 PLC DEC ± -		CHK 2/18/94 H ROSE		AMP Incorporated Harrisburg, PA 17105-3508	
3 PLC DEC ± 0.131.005		APPD 2/18/94 H ROSE			
ANGLES ± -		APPD 2/18/94 M THUMMA		NAME	
MATERIAL		PRODUCT SPEC		HOUSING, CRIMP SNAP TWIN LEAF, .100¢ WITHOUT MOUNTING EARS	
GLASS FILLED POLYESTER		-		SIZE	
COLOR: BLACK		APPLICATION SPEC		CAGE CODE	
FINISH		-		DRAWING NO	
-		-		D 00779 C-583717	
WEIGHT		-		SCALE	
-		-		4:1	
				SHEET	
				1 OF 2	

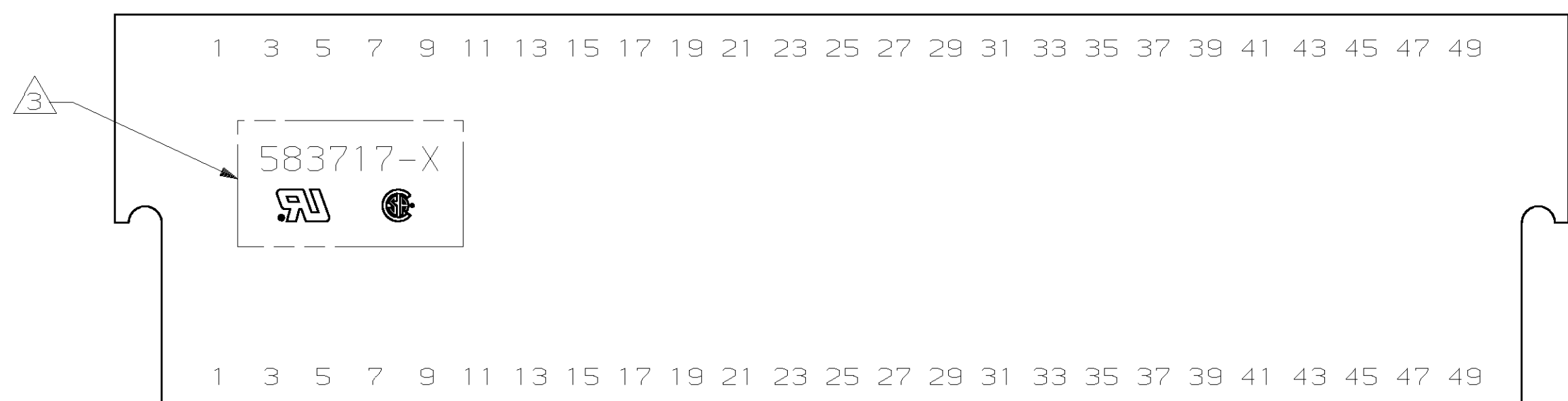
LOC	DIST	P	F	ZONE	LTR	REVISIONS	DATE	APPD
FT	22			Z		SEE SHEET 1 OF 2	-	-



3-583717-4



3-583717-5



- ① FIRST 22 POSITIONS MARKED WITH UPPER CASE LETTERS, FOLLOWED BY LOWER CASE LETTERS, FOLLOWED BY UPPERCASE AA, AB, AC ETC. CHARACTERS G, I, O AND Q ARE OMITTED. SEE TABLE FOR END CAVITY IDENTIFICATION.
- ② OPTIONAL PULL GROOVES. THE PULL GROOVE LENGTH, SIZE AND LOCATION ARE AT THE DISCRETION OF THE MOLD VENDOR.
- ③ HOUSING PART NUMBER, UL & CSA LOGO'S TO BE MOLDED IN THIS AREA. UL, LOGO PER 1-18838-3, CSA LOGO PER 1-18839-3.
- ④ HOT STAMP CUSTOMER PART NUMBER 2571 0880 FOR 2-583717-9 ONLY.
- ⑥ HOT STAMP CUSTOMER PART NUMBER 655862-2 IN THIS AREA.
- ⑦ DATE CODE TO BE MOLDED IN THIS AREA
- ⑧ MOLDED KEYING PLUG LOCATED BETWEEN CIRCUITS 25 AND 26 FOR PART NUMBER 4-583717-6 ONLY.
- ⑨ PRELIMINARY - NOT RELEASED FOR PRODUCTION.

	⑨	23 & A	61.47 [2.420]	66.04 [2.600]	60.96 [2.400]	55.88 [2.200]	23	4-583717-7
	⑧⑨	30 & J	79.25 [3.120]	83.82 [3.300]	78.74 [3.100]	73.66 [2.900]	30	4-583717-6
	⑨	27 & E	71.63 [2.820]	76.20 [3.000]	71.12 [2.800]	66.04 [2.600]	27	4-583717-5
		8 & J	23.37 [.920]	27.94 [1.100]	22.86 [.900]	17.78 [.700]	8	3-583717-9
	⑥	13 & P	36.07 [1.420]	40.64 [1.600]	35.56 [1.400]	30.48 [1.200]	13	3-583717-8
OBSOLETE	⑤	25 & c	66.55 [2.620]	71.12 [2.800]	66.04 [2.600]	60.96 [2.400]	25	3-583717-5
OBSOLETE	⑤	15 & S	41.15 [1.620]	45.72 [1.800]	40.64 [1.600]	35.56 [1.400]	15	3-583717-4
		13 & P	36.07 [1.420]	40.64 [1.600]	35.56 [1.400]	30.48 [1.200]	13	3-583717-3
		20 & X	53.85 [2.120]	58.42 [2.300]	53.34 [2.100]	48.26 [1.900]	20	3-583717-1
OBSOLETE	④	15 & S	41.15 [1.620]	45.72 [1.800]	40.64 [1.600]	35.56 [1.400]	15	2-583717-9
		14 & R	38.61 [1.520]	43.18 [1.700]	38.10 [1.500]	33.02 [1.300]	14	2-583717-7
OBSOLETE		28 & f	74.17 [2.920]	78.74 [3.100]	73.66 [2.900]	68.58 [2.700]	28	2-583717-5
		7 & H	20.83 [.820]	25.40 [1.000]	20.32 [.800]	15.24 [.600]	7	2-583717-3
		6 & F	18.29 [.720]	22.86 [.900]	17.78 [.700]	12.70 [.500]	6	2-583717-1
		50 & AF	130.05 [5.120]	134.62 [5.300]	129.54 [5.100]	124.46 [4.900]	50	1-583717-9
OBSOLETE		40 & v	104.65 [4.120]	109.22 [4.300]	104.14 [4.100]	99.06 [3.900]	40	1-583717-5
		30 & j	79.25 [3.120]	83.82 [3.300]	78.74 [3.100]	73.66 [2.900]	30	1-583717-3
		25 & c	66.55 [2.620]	71.12 [2.800]	66.04 [2.600]	60.96 [2.400]	25	1-583717-1
		22 & Z	58.93 [2.320]	63.50 [2.500]	58.42 [2.300]	53.34 [2.100]	22	583717-9
		18 & v	48.77 [1.920]	53.34 [2.100]	48.26 [1.900]	43.18 [1.700]	18	583717-7
		17 & U	46.23 [1.820]	50.80 [2.000]	45.72 [1.800]	40.64 [1.600]	17	583717-5
		15 & S	41.15 [1.620]	45.72 [1.800]	40.64 [1.600]	35.56 [1.400]	15	583717-3
		10 & L	28.45 [1.120]	33.02 [1.300]	27.94 [1.100]	22.86 [.900]	10	583717-1
		END CAVITY IDENT	D	C	B	A	POSN	PART NUMBER

DO NOT SCALE PRINT. UNLESS SPECIFIED DIMENSIONS IN mm [INCHES]		DR 12-10-92 J GALLUCCI BG		AMP Incorporated Harrisburg, PA 17105-3608	
TOLERANCES ON:	2 PLC DEC ±	CHK 2/18/94 H ROSE	APPD 2/18/94 H ROSE	NAME	
3 PLC DEC ±	ANGLES ±	APPD 2/18/94 M THUMMA	PRODUCT SPEC	HOUSING, CRIMP SNAP TWIN LEAF, .100¢ WITHOUT MOUNTING EARS	
FINISH		APPLICATION SPEC	SIZE	CAGE CODE	DRAWING NO
			D	00779	C-583717
		WEIGHT	SCALE	4:1	SHEET 2 OF 2

THIS DRAWING IS A CONTROLLED DOCUMENT FOR AMP INCORPORATED. IT IS SUBJECT TO CHANGE AND THE CONTROLLING ENGINEERING ORGANIZATION SHOULD BE CONTACTED FOR THE LATEST REVISION.

CUSTOMER DRAWING