

4

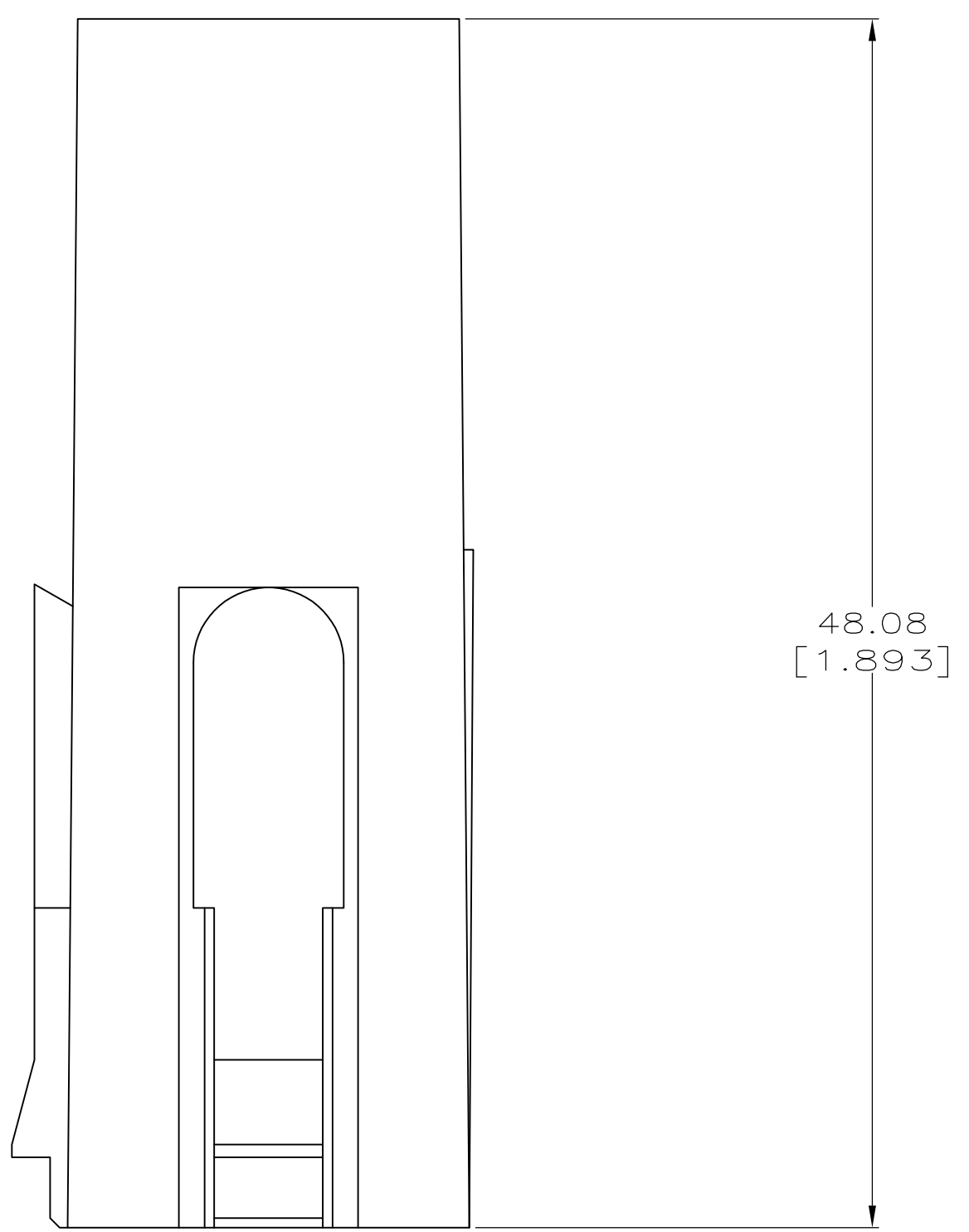
3

2

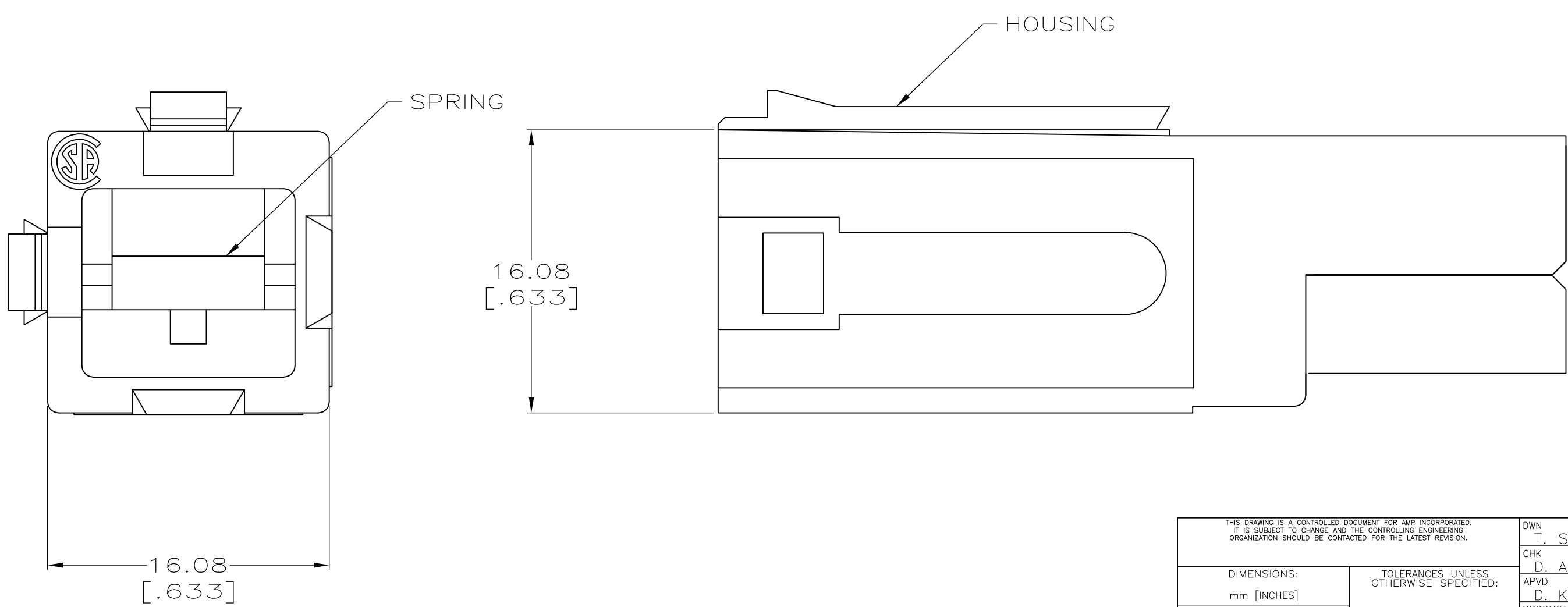
1

THIS DRAWING IS UNPUBLISHED. RELEASED FOR PUBLICATION .19
 (C) COPYRIGHT 19 BY AMP INCORPORATED. ALL RIGHTS RESERVED.

LOC	DIST	REVISIONS					
FT	60	P	LTR	DESCRIPTION	DATE	DWN	APVD
		G		REACTIVATE: -2; NPR C96-50 & REDWN ON CAD; EC 0210-0141-96	18MAR96	TCS	DA
		H		REV PER EC 0320-74-97	18 APR 97	MB	MM
		H1		REVISED PER ECO-09-021826	24AUG09	KK	AEG



- 1 ALL DIMENSIONS SHOWN ARE MAXIMUM UNLESS OTHERWISE SPECIFIED.
- 2 MATERIAL:
HOUSING - POLYCARBONATE, SEE TABLE FOR COLOR.
SPRING - STAINLESS STEEL.
- 3 OBSOLETE PARTS: OBSOLETE CIS STREAMLINING PER D.RENAUD/D.SINISI



3	OBSOLETE	RED	53884-4
		BLACK	53884-3
		WHITE	-53884-2-
		BLUE	53884-1
		COLOR	PART NO.

<small>THIS DRAWING IS A CONTROLLED DOCUMENT FOR AMP INCORPORATED. IT IS SUBJECT TO CHANGE AND THE CONTROLLING ENGINEERING ORGANIZATION SHOULD BE CONTACTED FOR THE LATEST REVISION.</small>		DWN T. SPRINKLE 18MAR96 CHK D. AHERON 04APR96 APVD D. KEMPKA 04APR96	AMP AMP Incorporated Harrisburg, PA 17105-3608
DIMENSIONS: mm [INCHES]	TOLERANCES UNLESS OTHERWISE SPECIFIED: 0 PLC ±- 1 PLC ±- 2 PLC ±- 3 PLC ±- 4 PLC ±- ANGLES ±- FINISH -	PRODUCT SPEC 108-11043 APPLICATION SPEC 114-6032 WEIGHT -	NAME HOUSING ASSEMBLY, SERIES 2, POWER LOCK SIZE A2 CAGE CODE 00779 DRAWING NO C-53884
MATERIAL 2		CUSTOMER DRAWING	SCALE 4:1 SHEET 1 OF 1 REV III

53884

B

A