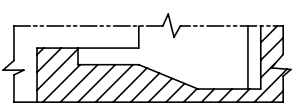
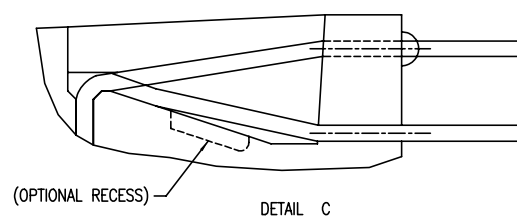
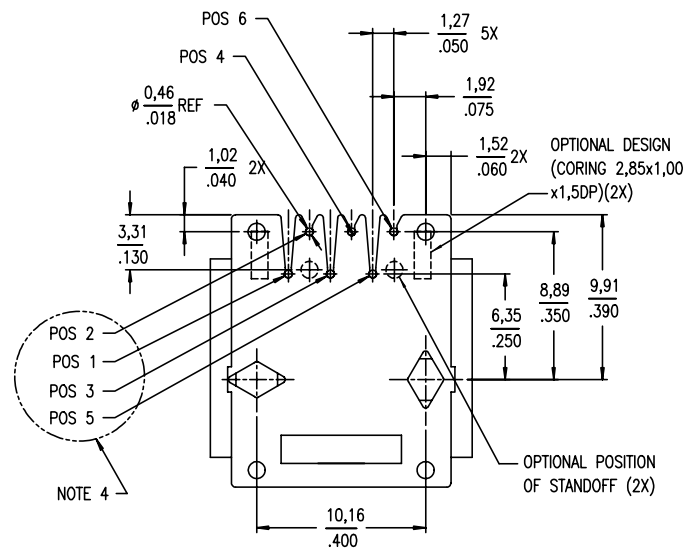
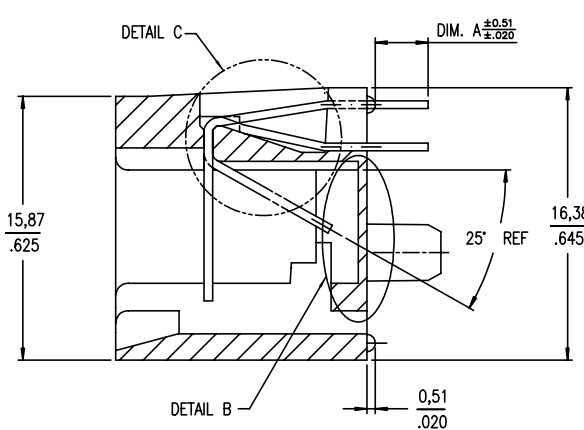
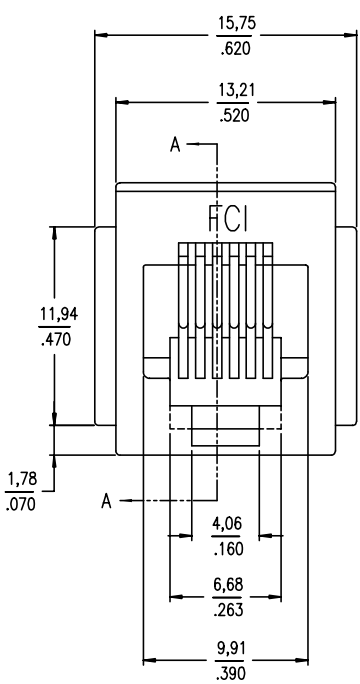
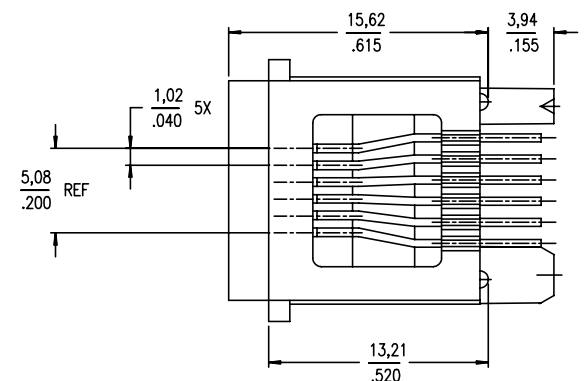


Tous droits strictement réservés. Reproduction ou communication a des tiers interdite sous quelque forme que ce soit sans autorisation écrite du propriétaire. Propriété de © FCI ELECTRONICS. Droits de reproduction FCI ELECTRONICS INC.

All rights strictly reserved. Reproduction or issue to third parties in any form whatever is not permitted without written authority from the proprietor. Property of © FCI ELECTRONICS. Copyright FCI ELECTRONICS INC.



DETAIL B -90° ROTATED
(OPTIONAL DESIGN
BERG TAIWAN ONLY)

mat'l. code				tolerances unless otherwise specified		CUSTOMER COPY		FCI www.fciconnect.com	
ltr	ecn no	dr	date	linear	.X ±.30	projection	title		
N	V70900	BOB W.	06/04/97		.XX ±.13	1st angle	6 POS VERTICAL		
P	T70458	CL	10/21/97		.XXX ±.05		P.C.B. MOD JACK ASSY		
R	T80219	CL	05/28/98	angles	0° ±2'		product family		code
S	S90142	JSR	10/4/99	dr		mm	MOD JACK		-
T	N06-0134	LONG	5/19/06	engr		scale	product no		sheet
U	N08-0239	SH	11/10/08	chr		3:1	A3 69254		1 of 2
V	N09-0092	SH	5/25/09	appd					
sheet index	revision	T	T						
		1	2						

Tous droits strictement réservés. Reproduction ou communication a des tiers interdite sous quelque forme que ce soit sans autorisation écrite du propriétaire. Propriété de © FCI ELECTRONICS. Droits de reproduction FCI ELECTRONICS INC.



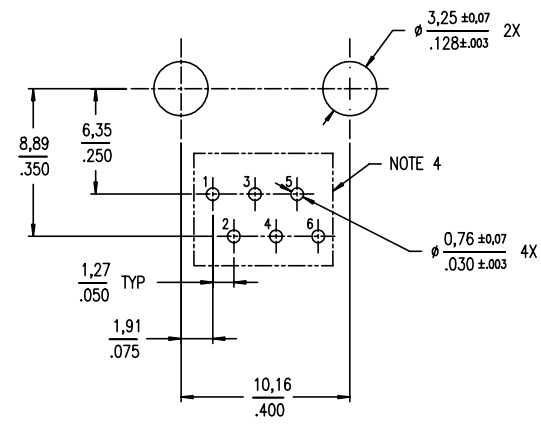
All rights strictly reserved. Reproduction or issue to third parties in any form whatever is not permitted without written authority from the proprietor. Copyright © FCI ELECTRONICS INC. Property of © FCI ELECTRONICS

PRODUCT NO.	POSITIONS LOADED	CONTACT PLATING	HOUSING COLOR	DIM. A	NOTES
69254-001/001LF	ALL	30u" GXT	BLACK	3.18	-
-002/002LF	2,3,4,5	30u" GXT	BLACK		-
-003/003LF	3,4	30u" GXT	BLACK		-
-004/004LF	2,3,4,5	30u" /0,76u Au	BLACK		-
-005/005LF	3,4	50u" /1,27u Au	BLACK		-
-006/006LF	3,4	30u" /0,76u Au	BLACK		-
-007/007LF	ALL	50u" /1,27u Au	BLACK		-
-008/008LF	ALL	30u" /0,76u Au	BLACK		-
-009	ALL	30u" GXT	BLACK		NOTE 1
-010	2,3,4,5	50u" /1,27u Au	BLACK		-
-011	ALL	30u" GXT	GREY		-
-012	2,3,4,5	15u" GXT	BLACK		-
-001A	ALL	30u" GXT	BLACK		NOTE 3
-001L	ALL	30u" GXT	BLACK		3.94
-002L	2,3,4,5	30u" GXT	BLACK	-	
-013	3,4	6u" /0.15um Au	BLACK	3.18	-
-014	2,3,4,5	2u" /0.05um Au	BLACK	3.18	-
69254-001HLF	ALL	30u" GXT	BLACK	3.18	-
-002HLF	2,3,4,5	30u" GXT	BLACK		-
-003HLF	3,4	30u" GXT	BLACK		-
-004HLF	2,3,4,5	30u" /0,76u Au	BLACK		-
-005HLF	3,4	50u" /1,27u Au	BLACK		-
-006HLF	3,4	30u" /0,76u Au	BLACK		-
-007HLF	ALL	50u" /1,27u Au	BLACK		-
-008HLF	ALL	30u" /0,76u Au	BLACK		-

H: MEETS PIP PROCESS PRODUCT NO.

NOTE :

- ① SPECIAL PACKAGING.
- 2 GXT IS 0,76um / 30u" OR 0,28um / 15u" MIN GXT WITH Au FLASH OVER 1,27um / 50u" MIN Ni.
- 3 ALL THE SPECS OF 69254-001A ARE SAME AS 69254-001 EXCEPT THE HSG HAS NO ANY "OPTIONAL DIMS".
- ④ THIS PIN NUMBERING IS OPPOSITE TO FCC, PART 68, SUBPART F REQUIRMENTS.
- 5 ADD "LF" SUFFIX AT THE END OF PART NUMBER FOR LEAD FREE OPTION.
- 6 IF "LF" P/N THE PRODUCT MEETS EUROPEAN UNION DIRECTIVES AND OTHER COUNTRY REGULATION AS DESCRIBED IN GS-22-008.
- 7 THE HOUSING WILL WITHSTAND EXPOSURE TO 260° PEAK TEMPERATURE FOR 15 SECONDS IN A WAVE SOLDER PROCESS.
- ⑧ PLATING OPTIONS:
MAY BE EITHER GOLD OR GXT PLATED AT MANUFACTURER'S OPTION.



BOARD LAYOUT VIEWED FROM TOP

mat'l. code		tolerances unless otherwise specified		CUSTOMER COPY		FCI www.fciconnect.com	
ltr	ecn no	dr	date	linear	.X ±.30	projection	title
v					.XX ±.13		4 POS VERTICAL
					.XXX ±.05		P.C.B. MOD JACK ASSY
				angles	0° ±2'	mm	product family MOD JACK
				dr	CATHY LIN 10/21/97	scale	code
				engr	TONY CHEN 10/21/97	3:1	-
				chr	TONY CHEN 10/21/97		product family MOD JACK
				appd	JENN TSAD 10/21/97		size A3
sheet index	revision sheet						dwg no 69254
							code 2 of 2