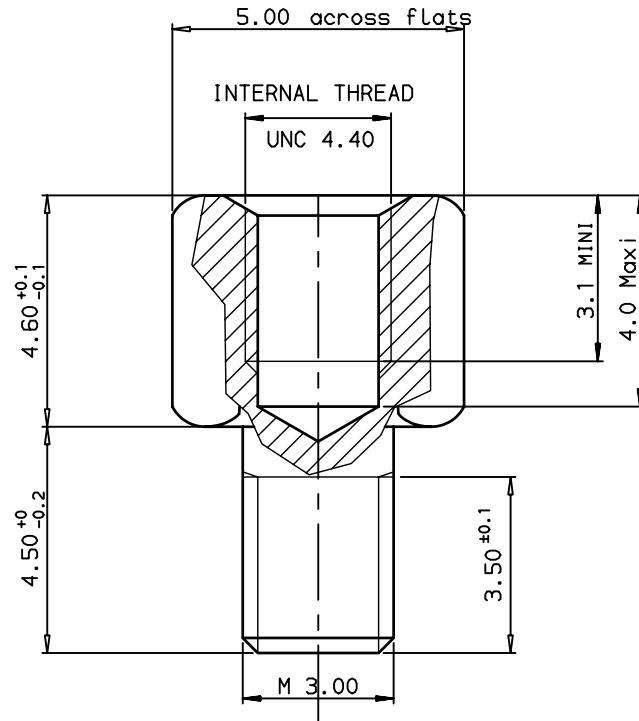


TECHNICAL CHARACTERISTICS :

Female screw locks: brass, tin plated .

Packaging : per 100 pieces .

Corrosion resistance : 50 hour exposure to salt spray .



NOTE:RoHS INFORMATIONS

- The "LF" products meet European union Directives and other country regulations as described in GS-22-008.
- Plating Sn (pure bright) over copper
- Packaging spec: see GS-14-920

Part number 86551167TLF

European Views

www.fciconnect.com		surface ISO 1302 ✓	tolerance std ISO 406 ISO 1101	projection ⊕	mm
		TOLERANCES UNLESS OTHERWISE SPECIFIED			
Dr	JOUBERT	1995/10/16	ANGULAR	0.X ±0.1	size A3
Eng	PESSON	1995/10/16	LINEAR	0.XX ±0.1	Scale 10
Chr	LEGARE	1995/10/16	0.XX' ±2'	0.XXX ±0.1	ECN LS09-0006
Appr	LEGARE	1995/10/16	Product family	D-SUB	Spec ref -
FCj		FEMALE SCREW LOCKS			Rev. E
		D SUB ACCESSORIES			dwg no C01-8655-0684
		catalog no	-	CUSTOMER	sheet 1 of 1

rev	ecn no	dr	date
B	-	JOU	1996/01/17
C	LS05-0026	MPE	2005/07/08
D	LS06-0097	LGO	2006/07/28
E	LS09-0006	PCR	2009/01/08
-	-	-	-
-	-	-	-
-	-	-	-