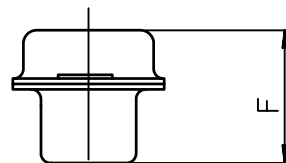
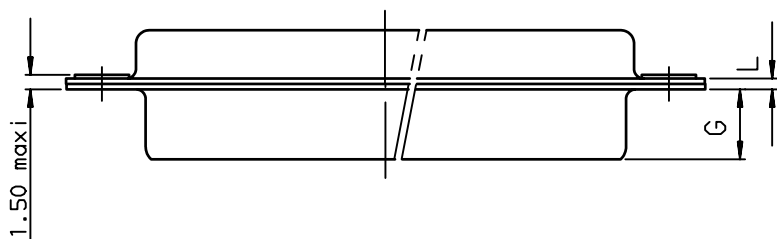
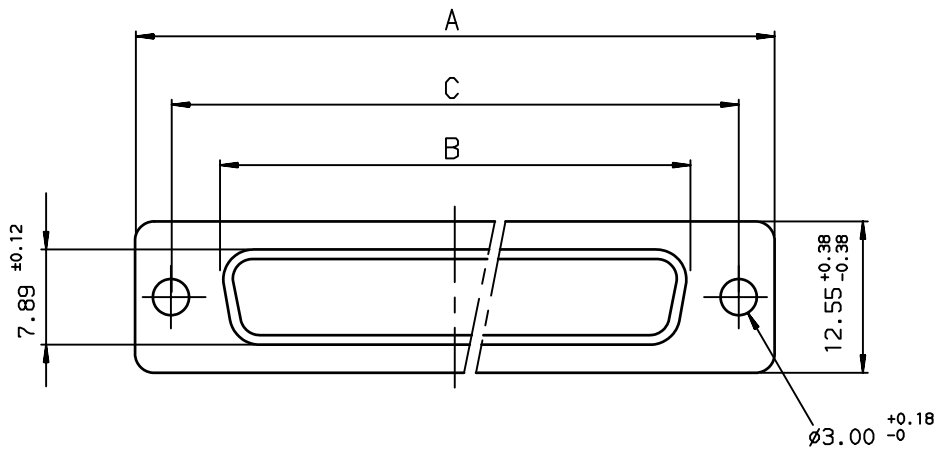


Dimensions are in millimeters



Shell size	Number of contacts	A $^{+0.76}_0$	B $^{+0.25}_0$	C ± 0.12	F $^{+0.13}_{-0.03}$	G $^{+0.25}_0$	L $^{+0.22}_0$	Part number
E	09	30.43	16.21	24.99	10.64	6.05	0.80	86553148
A	15	38.76	24.54	33.32	10.64	6.05	0.80	86553149
B	25	52.65	38.25	47.04	10.64	6.05	0.80	86553150
C	37	68.94	54.71	63.50	10.64	6.05	0.80	86553151

cadmium plated

rev	ecn no	dr	date
A	-	SJA	2000/03/09
B	LS05-0070	LGO	2005/09/09
C	LS05-0123	LGO	2006/01/12
D	LS06-0101	MPE	2006/06/19
E	LS09-0006	PCR	2009/01/08
-	-	-	-
-	-	-	-

www.fciconnect.com		surface ISO 1302 <input checked="" type="checkbox"/>	tolerance std ISO 406 ISO 1101	projection 	mm
TOLERANCES UNLESS OTHERWISE SPECIFIED					
Dr	JOUBERT	2006/01/12	ANGULAR	0.X	± 0.1
Eng	PESSON	2006/01/12	LINEAR	0.XX	± 0.1
Chr	LEGARE	2006/01/12	0.XX' $\pm 2'$	0.XXX	± 0.1
Appr	LEGARE	2006/01/12	Product family	D-SUB	Spec ref -
title		SOCKET METAL CAPS		size	A3
title		PACKAGING 5 PIECES		Scale	3
catalog no	-	dwg no	C01-8655-1536	ECN	LS06-0101
CUSTOMER		sheet 1 of 1		Rev.	E

REV F - 2006-04-17