

PART NAME

MINIBOX

PART No.

CU-2100-B TO CU-3011-A

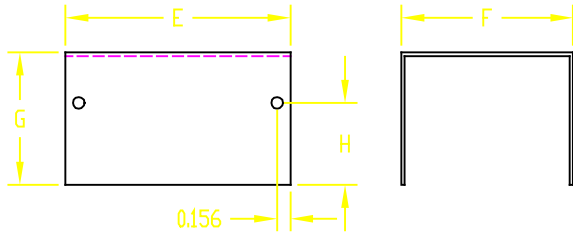
**MATERIAL:**

COVER & BASE - 0.040 ALUMIMUN

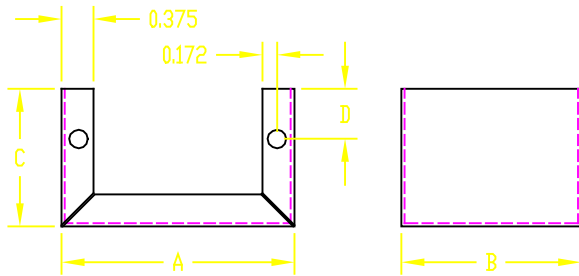
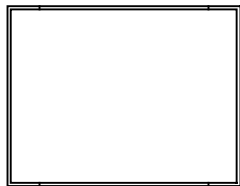
**FINISH:**

COVER & BASE - (A) NATURAL  
- (B) SMOOTH GRAY

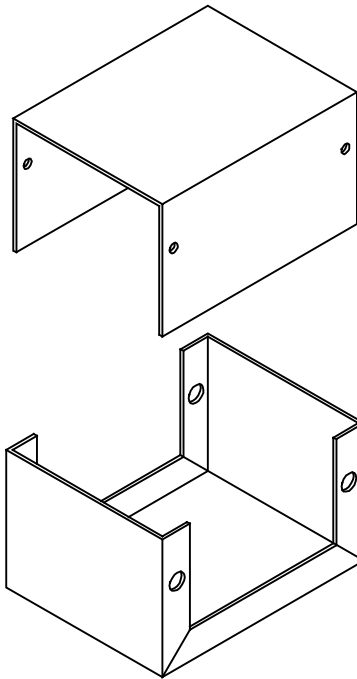
EACH UNIT SLIPS TOGETHER AND MAY BE JOINED BY EITHER BUILT-IN SNAP LOCK OR #6 SHEET METAL SCREWS (PROVIDED).



**COVER**



**BASE**



PART No.		BASE				COVER			
PAINTED	NATURAL	A	B	C	D	E	F	G	H
CU-2100-B	CU-3000-A	2.750	2.125	1.625	0.594	2.656	2.031	1.562	0.968
CU-2101-B	CU-3001-A	3.250	2.125	1.625	0.594	3.156	2.031	1.562	0.968
CU-2102-B	CU-3002-A	4.000	2.125	1.625	0.594	3.906	2.031	1.562	0.968
CU-2103-B	CU-3003-A	4.000	2.250	2.250	1.218	3.906	2.156	2.188	0.968
CU-2104-B	CU-3004-A	5.000	2.250	2.250	1.218	4.906	2.156	2.188	0.968
CU-2105-B	CU-3005-A	5.000	4.000	3.000	0.844	4.906	3.906	2.938	2.094
CU-2106-B	CU-3006-A	5.250	3.000	2.125	1.094	5.156	2.906	2.062	0.968
CU-2107-B	CU-3007-A	6.000	5.000	4.000	1.844	5.906	4.906	3.938	2.094
CU-2108-B	CU-3008-A	7.000	5.000	3.000	0.844	6.906	4.875	2.922	2.094
CU-2109-B	CU-3009-A	8.000	6.000	3.500	1.344	7.906	5.875	3.422	2.094
CU-2110-B	CU-3010-A	10.000	6.000	3.500	1.344	9.906	5.875	3.422	2.094
CU-2111-B	CU-3011-A	12.000	7.000	4.000	1.844	11.906	6.875	3.922	2.094