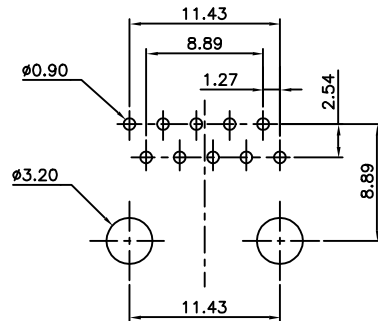
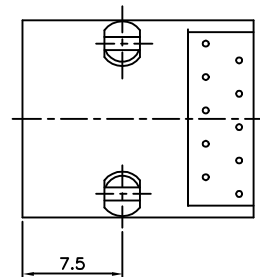
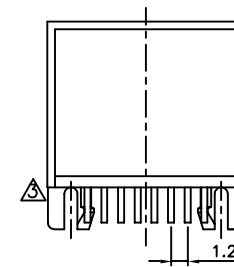
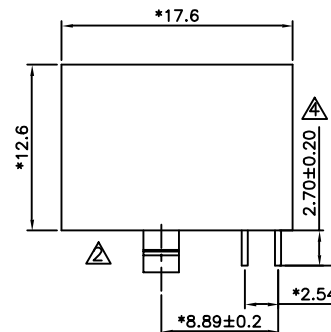
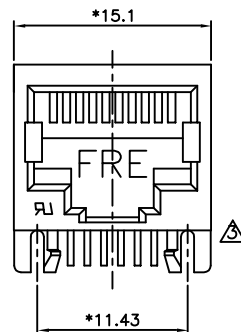


REVISION RECORD				
REV	ECO	DESCRIPTION	DRFT	CHKD
△		增加料號	SHINE 3/31/'01	
△		圖面修正	LFE 4/8/'02	
△		圖面修正	LFE 5/18/'02	
△		圖面修正	CZH 7/30/'02	
△		增加料號	CXQ 10/13/04	



PC Board Layout
Component Side Shown



NOTES:

ELECTRICAL:

- VOLTAGE RATING : 125 VAC RMS.
- CURRENT RATING : 1.5 AMP.
- CONTACT RESISTANCE : 30 MILLIOHMS MAX.
- INSULATION RESISTANCE: 1000 MEGOHMS MIN @ 500 VDC.
- DIELECTRIC STRENGTH : 1000 VAC RMS 60Hz, 1MIN.

MECHANICAL:

- HOUSING MATERIAL : GLASS FILLED POLYESTER UL94V-0.
- CONTACT MATERIAL : PHOSPHOR BRONZE $\phi 0.46\text{mm}$.
- PLATING : GOLD PLATING OVER NICKEL.
- OPERATING LIFE : 750 CYCLES MIN.
- PCB RETENTION PRE-SOLDER : 1 LB MIN.
- PCB RETENTION POST-SOLDER: 10 LBS MIN.

ENVIRONMENTAL:

- STORAGE : -40°C TO $+85^{\circ}\text{C}$.
- OPERATION: 0°C TO 70°C .

MATES WITH MODULAR PLUG CONFORMING TO
FCC PART 68, SUBPART F.

CUL FILE NO. E163191

△PART NUMBER: E560X-00002X

- | | | |
|-------|----------------|----------|
| 4-4C | 1-3u" | 2-6u" |
| 6-6C | 3-15u" | 4-30u" |
| 8-8C | 5-50u" | 6-Pd20u" |
| 1-10C | △ F-GOLD FLASH | |

DETACHED LISTS	← MM (INCH) →		DFTO BASS	DATE 5/23/'98	FULL RISE ELECTRONIC CO., LTD	
	TOLERANCES EXCEPT AS NOTED		CHKD	DATE		
	MM	±	MFO	DATE	TITLE 17.6 SIDE ENTRY ROUND PIN	
	.0 ± 0.2	±	APPLV XLF	DATE 2004/11/16		
.00 ± 0.15	±	MATERIAL :		DRAWING NO. GE563010		
.000 ± 0.075	±	ANGLES ± 0.5		/PART NO. SEE NOTE		
THIRD ANGLE PROJECTION		FINISH :		SIZE A3		
		SCALE : 3 : 1		REV 5		
DO NOT SCALE DRAWING				SHEET X OF Y		