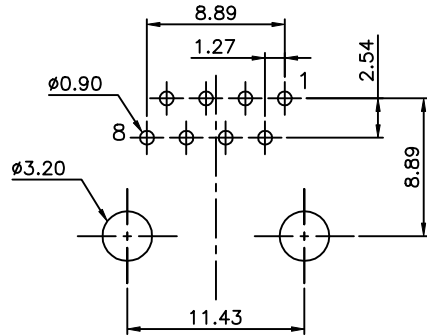
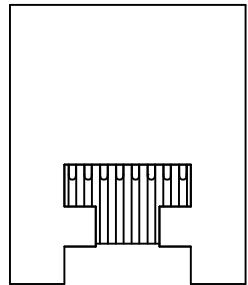
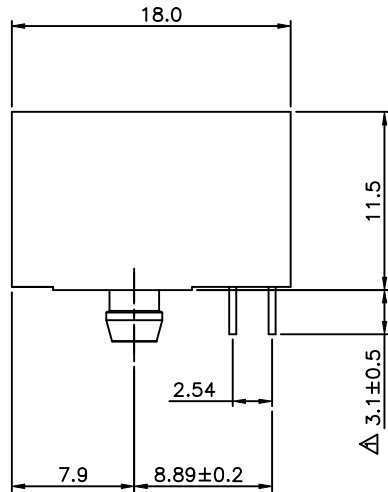
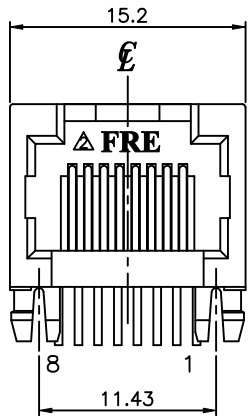


REVISION RECORD				
REV	ECO	DESCRIPTION	DRFT	CHKD
△		Drawing Modify	SYANG 4/28/98	
△		Drawing Modify	SYANG 6/19/98	
△		Drawing Modify	SYANG 7/10/98	
△		PART NO. CHANGE	RACHEL 3/3/99	
△		PART NO. CHANGE	sammy 1/13/05	
△		PART NO. CHANGE	sammy 05/09/05	
△		DEL △ △ P/N.	sammy 03/09/05	



PC BOARD LAYOUT COMPONENT SIDE SHOWN



NOTES:

ELECTRICAL:

- VOLTAGE RATING : 125 VAC RMS.
- CURRENT RATING : 1.5 AMP.
- CONTACT RESISTANCE : 35 MILLIOHMS MAX.
- INSULATION RESISTANCE: 1000 MEGOHMS MIN @ 500 VDC.
- DIELECTRIC STRENGTH : 1000 VAC RMS 60Hz, 1MIN.

MECHANICAL:

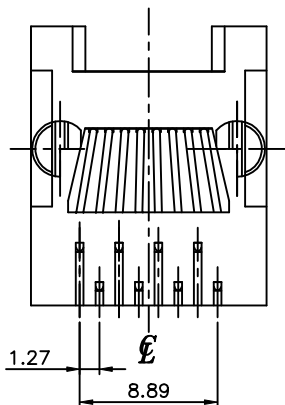
- HOUSING MATERIAL : GLASS FILLED POLYESTER UL94V-0.
- CONTACT MATERIAL : PHOSPHOR BRONZE 0.46mm.
- PLATING : GOLD PLATING OVER NICKEL.
- OPERATING LIFE : 750 CYCLES MIN.
- PCB RETENTION PRE-SOLDER : 1 LB MIN.
- PCB RETENTION POST-SOLDER: 10 LBS MIN.

ENVIRONMENTAL:

- STORAGE : -40°C TO +85°C.
 - OPERATION: 0°C TO 70°C.
- MATES WITH MODULAR PLUG CONFORMING TO FCC PART 68, SUBPART F.

△ △ PART NUMBER: E5A8X-3000EX

NO. OF CONTACT:	PLATING THICKNESS:
4- 4C	1- 3u" 2- 6u"
8- 8C	3-15u" 4-30u"



DETACHED LISTS	← MM (INCH) →		DFTO TONY	DATE 11/14/97	FULL RISE ELECTRONIC CO., LTD			
	TOLERANCES EXCEPT AS NOTED		CHKD SAMMY	DATE 2005/08/31				
			MFO	DATE	TITLE RJ45 SIDE ENTRY PCB JACK			
			APPV LUSHENG	DATE 2005/08/31				
MM		±	MATERIAL :		DRAWING NO. GE5A3002		SIZE	REV
.0 ± 0.2		±	QT'Y :		/PART NO. SEE NOTE		A3	7
.00 ± 0.15		±	FINISH :		DO NOT SCALE DRAWING		SHEET OF	
.000 ± 0.075		±	SCALE : 3 : 1		SHEET		OF	
ANGLES ± 0.5			THIRD ANGLE PROJECTION					