

NOTES:

ELECTRICAL:

1. VOLTAGE RATING : 125 VAC RMS.
2. CURRENT RATING : 1.5 AMP.
3. CONTACT RESISTANCE : 35 MILLIOHMS MAX.
4. INSULATION RESISTANCE: 1000 MEGOHMS MIN @ 500 VDC.
5. DIELECTRIC STRENGTH : 1000 VAC RMS 60Hz, 1MIN.

MECHANICAL:

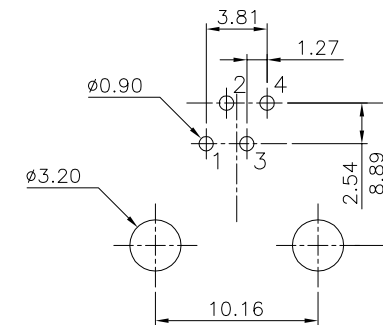
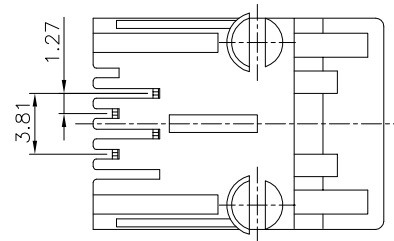
1. HOUSING MATERIAL : GLASS FILLED PBT UL94V-0.
2. HOUSING COLOR : BLACK
3. CONTACT MATERIAL : PHOSPHOR BRONZE t=0.35mm.
4. PLATING : 1: CONTACT AREA- SELECTIVE GOLD PLATING.
2: TAILS-TIN 150u" MIN OVER NICKEL.
5. OPERATING LIFE : 750 CYCLES MIN.
6. PCB RETENTION PRE-SOLDER : 1 LB MIN.
7. PCB RETENTION POST-SOLDER: 10 LBS MIN.

ENVIRONMENTAL:

1. STORAGE TEMPERATURE : -40°C TO +85°C.
2. OPERATION TEMPERATURE : -40°C TO +85°C.
3. WAVE SOLDERING TEMPERATURE: 230°C ~250°C (3~5 SECONDS).
4. RoHS COMPLIANT.

FCC PART 68, SUBPART F.
CUL FILE NO. E163191

PART NUMBER	GOLD PLATING
E6264-000221-L	3u"
E6264-000222-L	6u"
E6264-000224-L	30u"
E6264-000225-L	50u"



PC Board Layout T=1.6mm
Component Side Shown Tolerance±0.05mm

DETACHED LISTS THIRD ANGLE PROJECTION	MM (INCH)	RoHS Compliant	 A TECHNITROL COMPANY	
	TOLERANCES EXCEPT AS NOTED			
	.0 ± 0.2 ± .00 ± 0.15 ± .000 ± 0.075 ±	ANGLES ± 0.5	TITLE AMP L/P SIDE ENTRY PCB JACK 6P4C	
	DFTO Cathy DATE 2006/09/26	DRAWING NO. CE623A03-LC /PART NO. SEE TABLE	SIZE A3	REV 0
SCALE : 3:1		DO NOT SCALE DRAWING		
		SHEET 1 OF 1		

H
G
F
E
D
C
B
A