

DO NOT SCALE FROM THIS PRINT

**TABLE 1**  
CONTACT SPECIFICATION

-XX	-S, -D, -T	-S-RA	-D-RA	-T-RA
-01	C-15-1-X	N/A	N/A	N/A
-02	C-15-2-X	C-15-2-X	C-15-2-X	C-15-2-X
			C-15-3-X	C-15-3-X
			C-15-4-X	N/A
-03	C-15-3-X	C-15-3-X	C-15-3-X	N/A
			C-15-4-X	N/A
-04	C-15-4-X	C-15-4-X	N/A	N/A
-21	C-60-1-X	N/A	N/A	N/A
-22	C-60-2-X	C-60-2-X	C-60-2-X	C-60-2-X
			C-60-3-X	C-60-3-X
			C-60-4-X	C-60-4-X
-23	C-60-3-X	C-60-3-X	C-60-3-X	N/A
			C-60-4-X	N/A
-24	C-60-4-X	C-60-4-X	N/A	N/A

SSQ-1XX-XX-XXX-X-XX-XXX-XX-XX

**BODY LENGTH SPEC**  
-01 THRU -50  
(\*"A" = XX/10 + .020 [.51])

**CONTACT SPECIFICATION**  
(SEE TABLE 1)  
-01 THRU -04 (STANDARD INSERTION FORCE)  
-21 THRU -24 (LOW INSERTION FORCE)

**PLATING SPECIFICATION**  
-G: GOLD- SPECIFY -G IN CONTACT SUFFIX -XX  
-T: TIN- SPECIFY -T IN CONTACT SUFFIX -XX  
(NOT AVAILABLE FOR -21 THROUGH -24 LEAD STYLES)  
-S: SELECTIVE (HEAVY GOLD), MATTE IN TAIL- SPECIFY -S IN CONTACT SUFFIX -XX  
-H: HEAVY GOLD- SPECIFY -H IN CONTACT SUFFIX -XX  
-F: FLASH GOLD SELECTIVE, MATTE TIN TAIL (SEE PP-C-15-X-F)  
-TL: TIN/LEAD -SPECIFY -TL IN TERMINAL SUFFIX -XX  
(AVAILABLE ONLY ON LEAD STYLES -01.)  
-TM: MATTE TIN SPECIFY -T IN CONTACT SUFFIX -X  
-SM: HEAVY GOLD SELECTIVE, MATTE TIN TAIL, SPECIFY -S IN CONTACT SUFFIX -X  
-FM: FLASH GOLD SELECTIVE, MATTE TIN TAIL SPECIFY -F IN CONTACT SUFFIX -X  
-L: LIGHT GOLD SELECTIVE, MATTE TIN TAIL SPECIFY -L IN CONTACT SUFFIX -X  
-STL: SELECTIVE GOLD, TIN LEAD TAIL (AVAILABLE ONLY ON LEAD STYLES -01.)

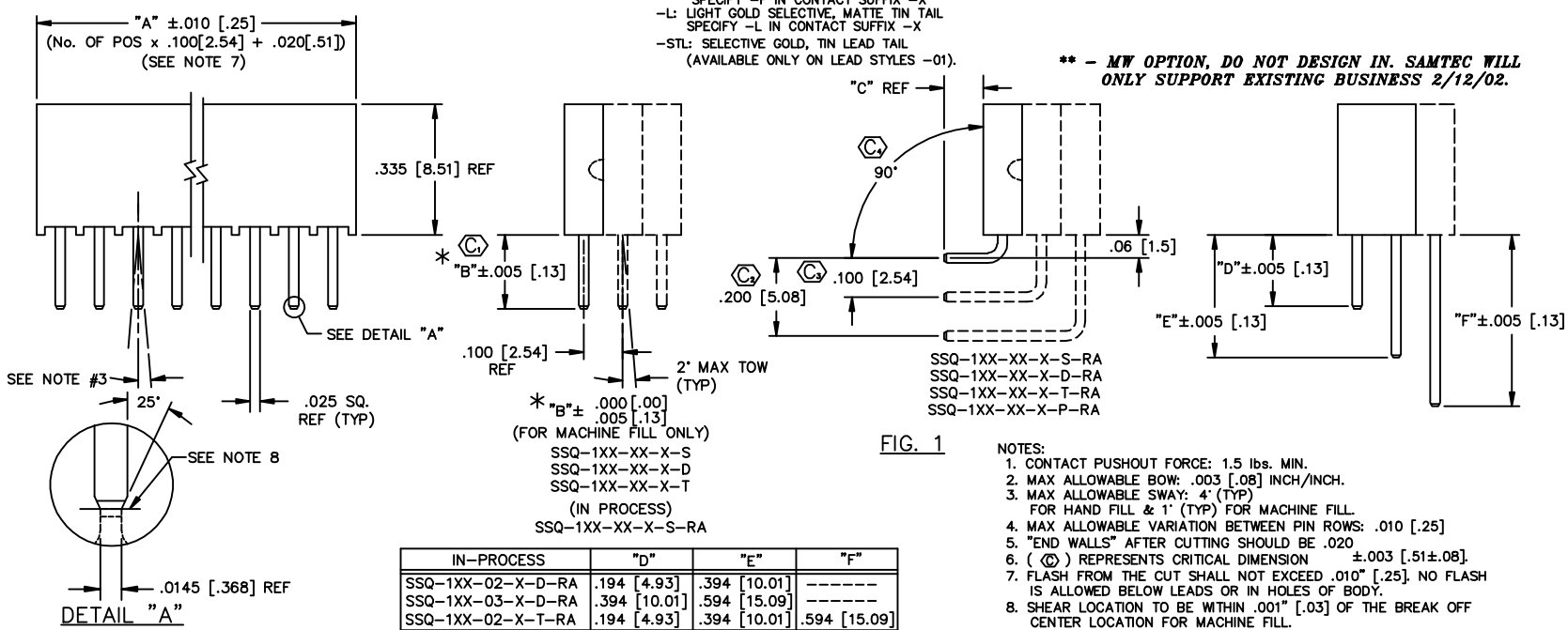
**OPTION**  
\*\* -MW: METAL WASHER (SEE FIG. 4, SHT 3)  
(N/A WITH -LL OR -RA)(N/A ON TRIPLE ROW)  
(AVAIL. ON 01, 02, 21 & 22 STYLES ONLY)  
(AVAIL. ON POS. -02 THRU -30 ONLY)

**OPTION**  
-LL: LOCKING LEAD (SEE FIG. 2, SHT 2)  
(N/A IN SINGLE ROW, 1 OR 2 POS)

**POLARIZING OPTION**  
INDICATE POS- SEE FIG. 3 SHT. 3

**OPTION**  
-RA: RIGHT ANGLE (SEE FIG. 1)  
(CONTACT -01 N/A)

**BODY SPECIFICATION**  
-S: USE SSW-XX-S  
-D: USE SSW-XX-D  
-T: USE SSW-XX-T  
-Q: USE SSW-50-T (TRIPLE ROW WITH ONLY 2 OUTER ROWS FILLED)  
-P: USE SSW-XX-P



- NOTES:**
- CONTACT PUSHOUT FORCE: 1.5 lbs. MIN.
  - MAX ALLOWABLE BOW: .003 [.08] INCH/INCH.
  - MAX ALLOWABLE SWAY: 4' (TYP) FOR HAND FILL & 1' (TYP) FOR MACHINE FILL.
  - MAX ALLOWABLE VARIATION BETWEEN PIN ROWS: .010 [.25]
  - "END WALLS" AFTER CUTTING SHOULD BE .020
  - (⊙) REPRESENTS CRITICAL DIMENSION ±.003 [.51±.08]
  - FLASH FROM THE CUT SHALL NOT EXCEED .010" [.25]. NO FLASH IS ALLOWED BELOW LEADS OR IN HOLES OF BODY.
  - SHEAR LOCATION TO BE WITHIN .001" [.03] OF THE BREAK OFF CENTER LOCATION FOR MACHINE FILL.
  - NOTCH ON -P-RA OPTION TO BE ORIENTED AS SHOWN.

	IN-PROCESS	"D"	"E"	"F"
SSQ-1XX-02-X-D-RA	.194 [4.93]	.394 [10.01]	-----	-----
SSQ-1XX-03-X-D-RA	.394 [10.01]	.594 [15.09]	-----	-----
SSQ-1XX-02-X-T-RA	.194 [4.93]	.394 [10.01]	.594 [15.09]	

**TABLE 2**

CONTACT	"B"	"C" REF		
	-S(-RA), -D, -T	-S-RA	-D-RA	-T-RA
-01, -21	.104 [2.64]	N/A	N/A	N/A
-02, -22	.194 [4.93]	.100 [2.54]	.100 [2.54]	.100 [2.54]
-03, -23	.394 [10.01]	.300 [7.62]	.300 [7.62]	N/A
-04, -24	.584 [14.83]	.490 [12.45]	N/A	N/A

**PROPRIETARY NOTE**  
THIS DOCUMENT CONTAINS INFORMATION CONFIDENTIAL AND PROPRIETARY TO SAMTEC INC. AND SHALL NOT BE REPRODUCED OR TRANSMITTED IN ANY FORM OR BY ANY MEANS, ELECTRONIC OR MECHANICAL, INCLUDING PHOTOCOPYING, RECORDING, OR BY ANY INFORMATION STORAGE AND RETRIEVAL SYSTEM, WITHOUT THE EXPRESS WRITTEN CONSENT OF SAMTEC INC.

MATERIAL:  
INSULATOR:  
PRIMARY MATERIAL: LCP  
COLOR: BLACK

TERMINAL:  
PHOSPHOR BRONZE

EXISPROD\ASSEMBLY\100  
SSQ-ASM

**samtec**

520 PARK EAST BLVD. NEW ALBANY, INDIANA 47150  
PHONE (812) 944-6733 P.O. BOX 1147  
CODE 55322