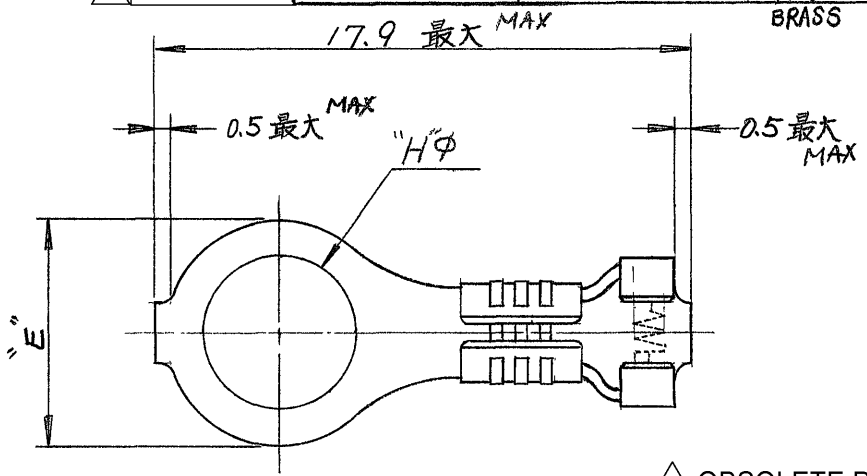
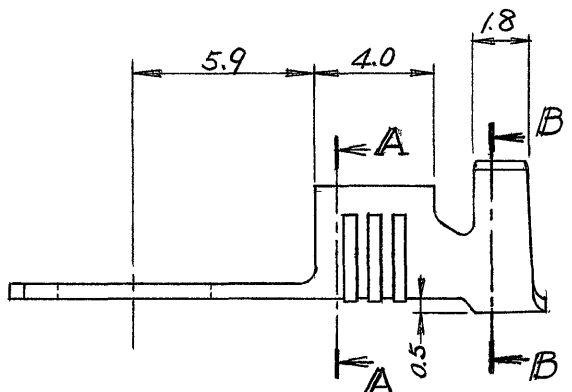


番号 (NUMBER)  
C-170053

△ OBSOLETE 1-170053-7 黄銅 0.5t 半田めっき 7.52 4.34  
BRASS TIN-LEAD PL.



△ OBSOLETE PARTS: OBSOLETE CIS STREAMLINING PER D.RENAUD/D.SINISI



△ OBSOLETE

L.P. TERMINAL DN バラ状端子型番	S.T. TERMINAL DN 連鎖状端子型番	MATERIAL 材 料	FINISH 仕 上	"E" ±0.15	"H" ±0.1
170053-1	170011-1	黄銅 0.5t BRASS	—	7.52	5.0
↑ -2	↑	↑	錫めっき TIN PL.		5.0
-3			—		4.19
-4			錫めっき TIN PL.		4.19
△ OBSOLETE -5			—		3.2
-6			錫めっき TIN PL.		3.2
↓ -7	↓	↓	—		4.34
170053-8	170011-8		錫めっき TIN PL.		4.34
1-170053-1	1-170011-1		—		5.2
↑ -2	↑		錫めっき TIN PL.	7.52	5.2
-3			—	6.5	4.19
-4			錫めっき TIN PL.		4.19
↓ -5	↓	BRASS	—		3.68
1-170053-6	1-170011-6	黄銅 0.5t	錫めっき TIN PL.	6.5	3.68

単位: 耗 DIMENSIONS IN MM. DO NOT SCALE PRINT

B1	ECO-10-000444	KK	AEG	08JAN	①1975 BY AMP (Japan), Ltd. ALL RIGHTS RESERVED AMP PRODUCTS COVERED BY PATENTS AND/OR PATENTS PENDING	参考図面 (CUSTOMER COPY) REFERENCE ONLY
B	ADDED 1-7 (FJ00-1596-94)	Y.I	S.M	12-8 '84	材料 (MATERIAL) 表参照	AMP   AMP (JAPAN), LTD. Tokyo, Japan
A1	OBSOLETE (FJ00-0525-93)	K.N	Y.T	7-23 '83	仕上 (FINISH) 表参照	
A	REVISED PER ECN J82-6801	H.O	H.O	10/23 '82	包含電線断面積 (WIRE RANGE) 0.75~2.27 mm <sup>2</sup> (AWG #8-14)	分類 (CLASS) 丸型 RING TONGUE
O	RELEASED J8-3839	H.D	K.M	4/21/85	被覆外径 (INSULATION DIA) 3.05~4.32 mm (120~170IN)	型式 (TYPE) —
LTR	変更 (REVISION RECORD)	DR	CHK	DATE	一般公差 (TOLERANCE) EXCEPT (AS NOTED) ±0.4 (±0.15) ±1°	尺度 (SCALE) LOC SIZE 番号 (NO) REV
DR	4-21 '75	DE		15/12/75	4-1	J A C-170053 B1
CHK	H. Shibasaki			Y. Saito	名称 (NAME) RING TONGUE TERMINAL L.P. 丸型端子 (バラ状)	