

"High Frequency Ceramic Solutions"

2.45 GHz Band Pass Filter

P/N 2450BP15B100

Detail Specification: 08/17/03

Page 1 of 2

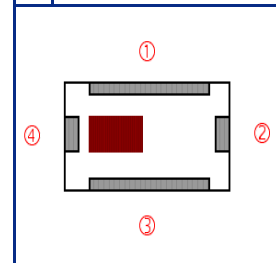
General Specifications

Part Number	2450BP15B100	
Frequency (MHz)	2400 - 2500	
Insertion Loss	2.2 dB max.	
Return Loss	9.5 dB min.	
Attenuation (min.)	1200 ~ 1300MHz	25 dB
Attenuation (min.)	2000MHz	10 dB
Attenuation (min.)	3000MHz	12 dB
Attenuation (min.)	3600 ~ 3800MHz	30 dB
Attenuation (min.)	4800 ~ 5000MHz	34 dB

Input Power	500 mW max.
Impedance	50 Ω
Operating Temperature	-40 to +85°C
Reel Quantity	4,000

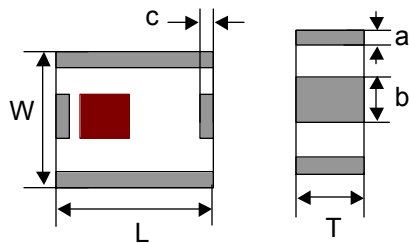
Terminal Configuration

No.	Function
1	GND
2	OUT
3	GND
4	IN



Mechanical Dimensions

	In	mm
L	0.079 ± 0.006	2.00 ± 0.15
W	0.049 ± 0.004	1.25 ± 0.10
T	0.037 ± 0.004	0.95 ± 0.10
a	0.051 ± 0.006	1.30 ± 0.15
b	0.012 ± 0.006	0.30 ± 0.15
c	0.010 ± 0.006	0.25 ± 0.15
d	0.014 ± 0.006	0.35 ± 0.15

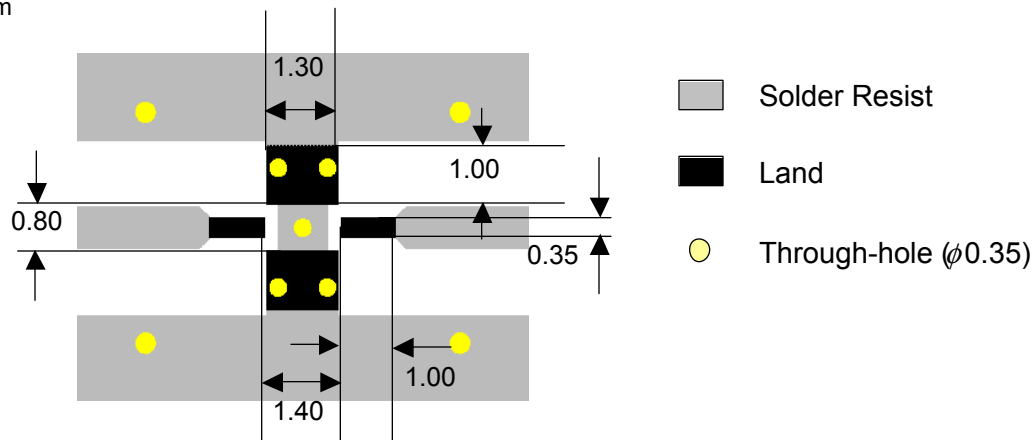


Mounting Considerations

Mount these devices with brown mark facing up.

Line width should be designed to provide 50Ω impedance matching characteristics.

Units: mm



Johanson Technology, Inc. reserves the right to make design changes without notice.

All sales are subject to Johanson Technology, Inc. terms and conditions.

"High Frequency Ceramic Solutions"

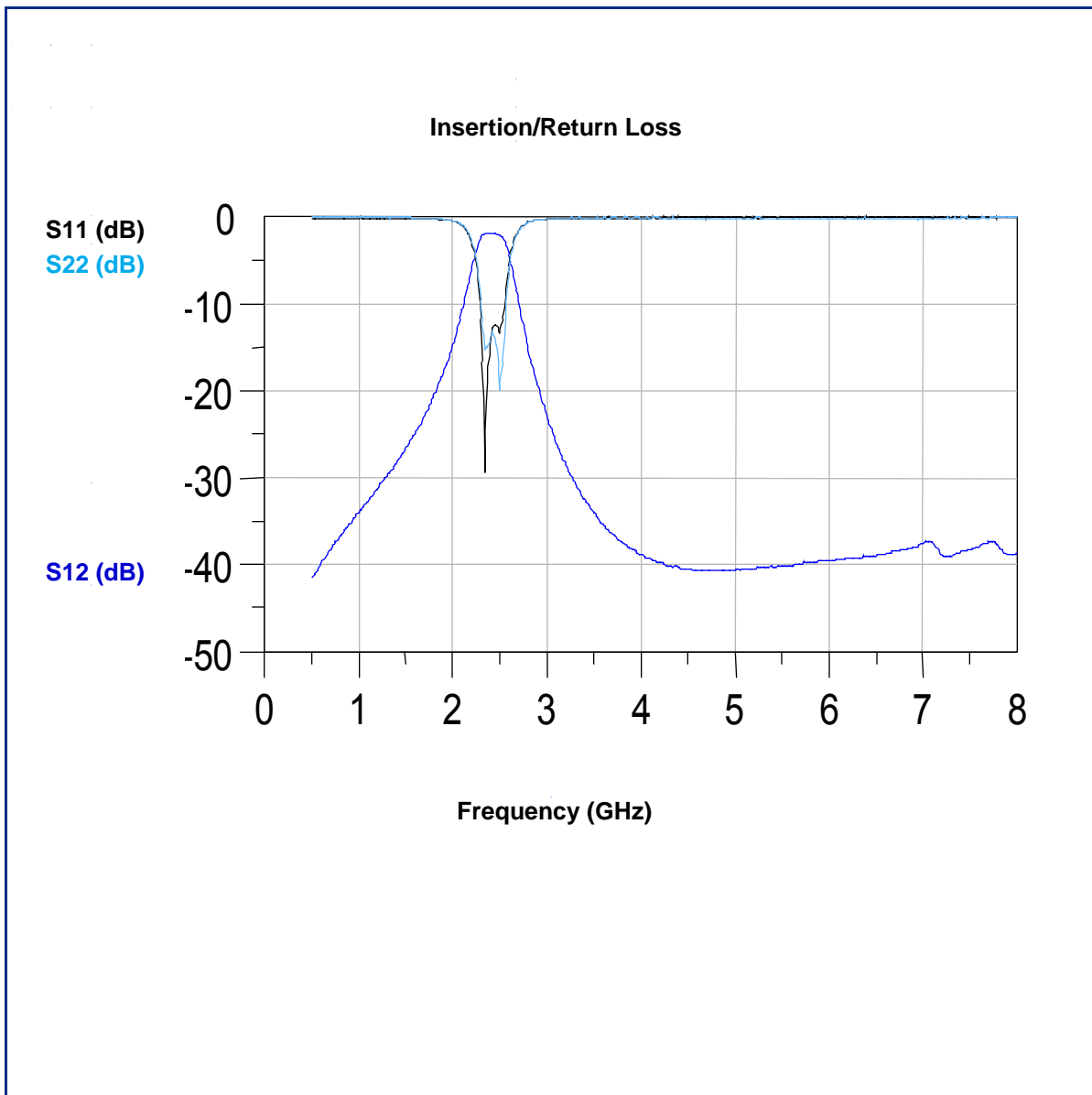
2.45 GHz Band Pass Filter

P/N 2450BP15B100

Detail Specification: 08/17/03

Page 2 of 2

Typical Electrical Performance (T=25°C)



Johanson Technology, Inc. reserves the right to make design changes without notice.

All sales are subject to Johanson Technology, Inc. terms and conditions.

