



Cord retaining strain relief



4700.00XX



0888.0021



Description

- Front Panel:
Screw-on from front side
- 1 Function:
Protection against accidental disconnection of the plug

References

Weblinks

[General Product Information](#), [Approvals](#), [RoHS](#), [CHINA-RoHS](#), [Mating Connectors](#), [e-Store](#), [SCHURTER-Stock-Check](#), [Distributor-Stock-Check](#), [Accessories](#)

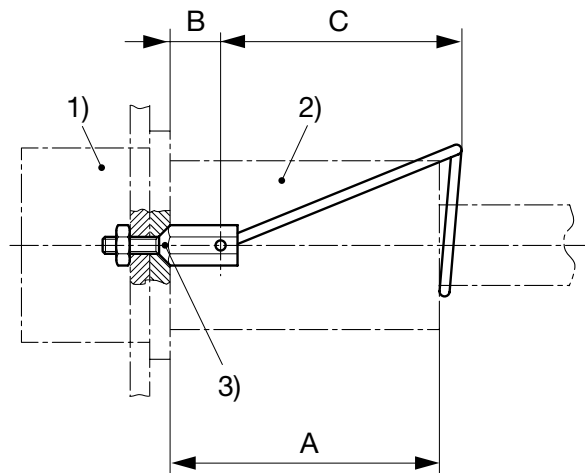
For protection against loosening or accidental disconnection of the plug connector. Can also be mounted later. The correct kit type respectively the corresponding Order No. for each combination of fixed and free components is shown in the selection chart. Horizontal flanged components are secured to the panel using the kit supplied. Vertical flanged or snap-in components require additional drilling for the cord retaining kit as shown in the diagrams below.

The kits with the part number 0047.00xx consist of:

- 1 Stainless steel retaining clip
- 2 Nickel plated brass pillars
- 2 Nickel plated brass nuts
- 2 Nickel plated beryllium copper crinkle washers

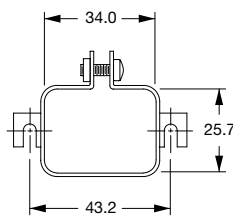
The kit with part number 0888.0021 consists only of the retaining clamp.

Dimensions

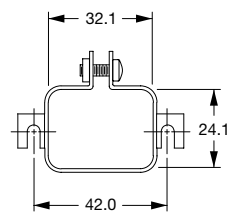
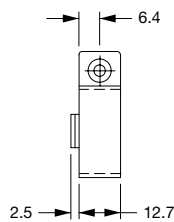


(Details see overview table and table of variants)

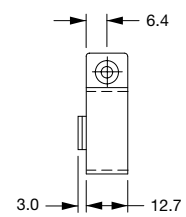
- 1) Inlet/Outlet 2) Plug/Connector 3) Design

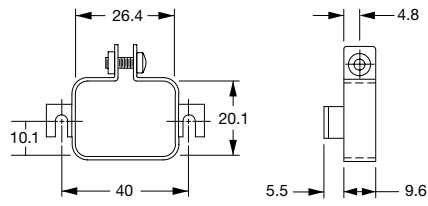


0888.0019

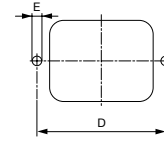


0888.0020



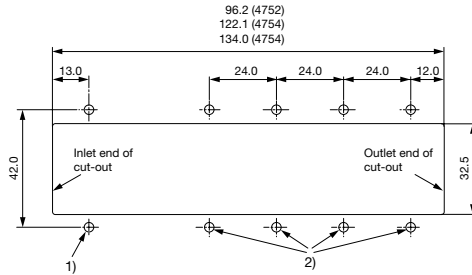


0888.0021



(Details see overview table and table of variants)

Holes according inlet/outlet dimensions centered to respectively inlet/outlet



(Details see overview table)

1) Additional drilling for Kit H, when used with 4754 and 4758

2) Additional drilling for Kit E, when used with 4752, 4754 and 4758

Type	Appliance inlet/outlet						Cord plug/connector									
	Snap-in Mounting	Screw-on Mounting	Mounting from Frontside	Mounting from Rearside	Outlet	Inlet	Panel Thickness	Type	4781	4782	4795	4732	4735	4796	3020	302U
								Dimension A	61.5	61.5	57.0	55.5	60.0	58.0	-	-
4707		.	.		.			B	B							
4721		.	.		.						D					
4721		.	.		.							F				
4723	.		.		.						E					
4723	.		.		.							G				
4752	.		.		.						E					
4752	.		.		.							G				
4754	.		.		.						E					
4754						G				
4754		H	H					Z	Z	
4758					E					
4758						G				
4758		H	H					Z	Z	
4793						L					
4797								L		
4797									J		
4798						K					
5110		A	A							
5110			C	C					Z	Z	
5120		G	G					Z	Z	
5120			G	G					Z	Z	
5120		>5mm		E	E					Z	Z	
5120		<3mm		G	G					Z	Z	
5150		G	G					Z	Z	
5150			G	G					Z	Z	
5150		>5mm		E	E					Z	Z	
5150		<3mm		G	G					Z	Z	
5130					L					
5130						L					
5130		<3mm					L					
5200			.		.	.		B	B							
5220			.		.	.		B	B							
6100		A	A							
6100			C	C					Z	Z	
6110		A	A							
6110			C	C					Z	Z	
6135		A	A							
6200		A	A							
6200			B	B							
6220		A	A							
6220			B	B							
6600					E					
6600							G				
6600						D					
6600							F				
6610					E					
6610							G				
0723								J			
C20F					L					
C20F						L					
C20F		<3mm					L					
CD		A	A							
CE		A	A							
CG		A	A							
DA22			H	H							
DC11		A	A							
DC11			B	B							
DC12		A	A							
DC12			B	B							
DC12			A	A							
DC21			G	G					Z	Z	
DC22			H	H							
DD11			A	A							
DD11		<3mm		A	A							
DD12			A	A							
DD12		.	.		.	<3mm		A	A							
DD21		.	.		.	<3mm		A	A							
DD22		.	.		.	<3mm		A	A							

							Cord plug/connector									
							Type	4781	4782	4795	4732	4735	4796	3020	302U	
							Dimension A	61.5	61.5	57.0	55.5	60.0	58.0	-	-	
							Plug
							Connector
Appliance inlet/outlet																
Type	Snap-in Mounting	Screw-on Mounting	Mounting from Frontside	Mounting from Rearside	Outlet	Inlet	Panel Thickness									
EC11		.	.			.					M			Z	Z	
EC12						M			Z	Z	
EF11						M			Z	Z	
EF12						M			Z	Z	
EG11						M			Z	Z	
EG12						M			Z	Z	
FELCOM 54	.		.		.			A	A							
FELCOM 54	.		.		.					E						
FELCOM 54	.		.		.						G					
FELCOM 64	.		.		.			A	A							
FELCOM 64	.		.		.					E						
FELCOM 64	.		.		.						G					
KD			A	A							
KE			A	A							
KEA			A	A							
KEA			B	B							
KEB I			A	A							
KEB I			B	B							
KEB II			A	A							
KEC			A	A							
KFA			A	A							
KFA			B	B							
KFA			A	A							
KFB I			B	B							
KFB II			A	A							
KFC			A	A							
KFS			C	C				Z	Z		
KFX			C	C				Z	Z		
KG			A	A							
KM			A	A							

Variants

Kit	Type	B	C	D	E	Order Number
-	-	-	-	-	-	0888.0001
-	-	-	-	-	-	0888.0004
-	-	-	-	-	-	0888.0005
-	-	-	-	-	-	0888.0015
-	-	-	-	-	-	0888.0016
-	-	-	-	-	-	0888.0017
-	-	-	-	-	-	4700.0013
-	-	-	-	-	-	4700.0014
-	-	-	-	-	-	4700.0015
-	-	-	-	-	-	4700.0016
A	Flat head	8	45.5	36	3.4	4700.0001
B	Countersunk	9.5	45.5	36	3.4	4700.0002
C	Countersunk	8	45.5	40	3.4	4700.0003
D	Countersunk	4	40	40	3.4	4700.0004
E	Flat head	4.5	40	40	3.4	4700.0005
F	Countersunk	4	45.5	40	3.4	4700.0006
G	Flat head	4.5	45.5	40	3.4	4700.0007
H	Flat head	5.5	45.5	40	3.4	4700.0008
J	Countersunk	8	37.5	45	3.4	4700.0009
K	Countersunk	6.6	37.5	42	3.4	4700.0010
L	Flat head	5.5	37.5	42.5	3.4	4700.0011
M	Flat head	5.5	40	42.5	3.4	4700.0012
X	Flat head	-	-	43.2	-	0888.0019
Y	Flat head	-	-	42	-	0888.0020
Z	Flat head	-	-	40	-	0888.0021

Set see Cord retaining Selector Chart

Set see Cord retaining Selector Chart

Packaging unit 50 Pcs