

IEC appliance inlet C20, snap-in mounting, front side, solder/quick connect terminal



Snap-In Version

C20



70° C

**Description**

- Panel Mount:  
Snap-in, from front side
- Appliance inlet, Pin temperature 70 °C, Protection class I
- Solder terminals or quick connect terminals
- Alternative: protection class II version 4794

**Approvals**

- VDE License Number: 40008517
- UL License Number: E96454

**Other versions on request**

- Types for enhanced glow wire test requirements acc. IEC 60695-2-11 to -13 for the use in unattended household equipment acc. IEC 60335-1

**Weblinks**

[Approvals](#), [RoHS](#), [CHINA-RoHS](#), [e-Store](#), [SCHURTER-Stock-Check](#), [Distributor-Stock-Check](#)

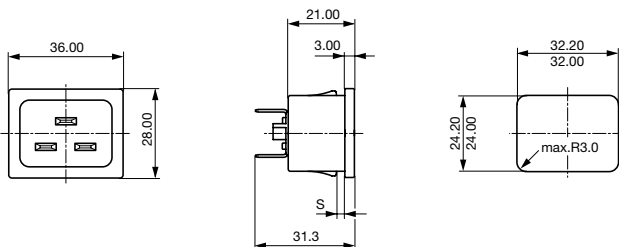
**Technical Data**

Ratings IEC	16 A / 250 VAC; 50 Hz	Appliance-Inlet/-Outlet	C20 acc. to IEC/EN 60320-1,
Ratings UL/CSA	20 A / 250 VAC; 60 Hz		UL 498, CSA C22.2 no. 42 (for cold
Dielectric Strength	> 2 kVAC between L-N > 2 kVAC between L/N-PE (1 min/50 Hz)		conditions) pin-temperature 70 °C, 16 A,
Allowable Operation Temp.	-25 °C to 70 °C		Protection class I
Degree of Protection	from front side IP 30 acc. to IEC 60529		
Protection Class	Suitable for appliances with protection class I acc. to IEC 61140		
Terminal	Solder terminals or quick connect terminals		
Panel Thickness s	Snap-in: 1/ 1.2/ 1.5/ 2/ 2.5/ 3 mm		
Material: Housing	Thermoplastic, black, UL 94V-0		

**Dimensions**

4793

Length |-----| 36 mm



Distributor-Stock-Check | SCHURTER-Stock-Check | e-Store

## Variants

Panel mounting	Panel Thickness s [mm]	Terminal	Order Number
Snap-in	1	Quick connect terminals 6.3 x 0.8 mm	4793.3000
Snap-in	1.2	Quick connect terminals 6.3 x 0.8 mm	4793.8000
Snap-in	1.5	Quick connect terminals 6.3 x 0.8 mm	4793.4000
Snap-in	2	Quick connect terminals 6.3 x 0.8 mm	4793.5000
Snap-in	2.5	Quick connect terminals 6.3 x 0.8 mm	4793.6000
Snap-in	3	Quick connect terminals 6.3 x 0.8 mm	4793.7000
Snap-in	1	Solder terminals 3.8 x 0.8 mm	4793.3200
Snap-in	1.2	Solder terminals 3.8 x 0.8 mm	4793.8200
Snap-in	1.5	Solder terminals 3.8 x 0.8 mm	4793.4200
Snap-in	2	Solder terminals 3.8 x 0.8 mm	4793.5200
Snap-in	2.5	Solder terminals 3.8 x 0.8 mm	4793.6200
Snap-in	3	Solder terminals 3.8 x 0.8 mm	4793.7200

Articles for enhanced glow wire test requirements acc. IEC 60695-2-11 to -13 can be ordered with ending ".15" (xxxx.xxxx.15). They are suitable for the use in unattended household equipment acc. IEC 60335-1.

**Packaging unit** 100 Pcs

## Accessory

## Description



Assorted Covers  
Rear Cover

0859.0047



Cord retaining kits  
Cord retaining strain relieve

Flat head, L

4700.0011

## Mating Outlet/Connector

## Category / Description

## plug connector



IEC cord connector C19, rewirable, straight

0104

IEC cord connector C19, rewirable, angled

1651

IEC cord connector C19, rewirable, straight

1652

IEC cord connector C19, rewirable, angled

4790

IEC cord connector C19, rewirable, straight

4795



## Power Entry Module

Power Cord with IEC Appliance Connector C19, straight, 70°C

1654

Kabelverbindung/16 A