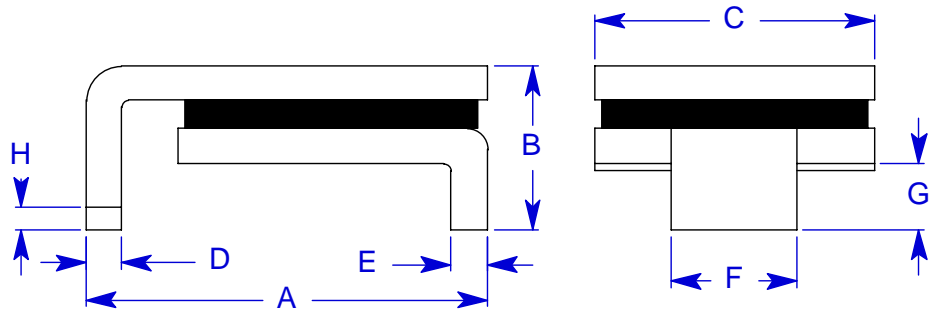


Specification Status: Released

Maximum Electrical Rating
Operating Voltage / Interrupt Current
16V_{DC} / 70A

Marking:

- 160** — Part Identification
- Manufacturer's Mark
- Lot Identification



Notes:

1. All metal surfaces are tin plated.
2. Drawing not to scale.

TABLE I. DIMENSIONS:

| | A | | B | | C | | D | | E | | F | | G | | H |
|------|---------|---------|-----|---------|--------|---------|---------|---------|---------|---------|---------|---------|---------|---------|---------|
| | MIN | MAX | MIN | MAX | MIN | MAX | MIN | MAX | MIN | MAX | MIN | MAX | MIN | MAX | MIN |
| mm: | 8.0 | 9.4 | -- | 3.0 | 6.0 | 6.71 | 0.56 | 0.71 | 0.56 | 0.71 | 3.68 | 3.94 | 0.66 | 1.37 | 0.43 |
| in*: | (0.315) | (0.370) | -- | (0.118) | (0.24) | (0.264) | (0.022) | (0.028) | (0.022) | (0.028) | (0.145) | (0.155) | (0.026) | (0.054) | (0.017) |

TABLE II. PERFORMANCE RATINGS:

| CURRENT RATINGS** | | | | | | TIME TO TRIP** | RESISTANCE VALUES | | TRIPPED-STATE POWER DISSIPATION** |
|-------------------|------|--------------|------|--------------|------|---------------------------|-------------------|-------|-----------------------------------|
| AMPS AT 0°C | | AMPS AT 20°C | | AMPS AT 60°C | | SECONDS AT 20°C, 8.0A MAX | OHMS AT 20°C | | WATTS AT 20°C |
| HOLD | TRIP | HOLD | TRIP | HOLD | TRIP | | MIN | MAX* | MAX |
| 1.78 | 3.56 | 1.60 | 3.20 | 1.24 | 2.48 | 15 | 0.050 | 0.150 | 2.2 |

* Maximum resistance is measured 1 hour after reflow.

** Values specified were determined using PCB's with 0.140" x 2.0 ounce copper traces.

Reference Documents:

PS300, PS400

Precedence:

This specification takes precedence over documents referenced herein.

Effectivity:

Reference documents shall be the issue in effect on the date of invitation for bid.

CAUTION:

Operation beyond the rated voltage or current may result in rupture, electrical arcing or flame.

Materials Information

ROHS Compliant

ELV Compliant

Pb-Free

Halogen Free*

Directive 2002/95/EC
Compliant

Directive 2000/53/EC
Compliant



* Halogen Free refers to: Br≤900ppm, Cl≤900ppm, Br+Cl≤1500ppm