

### Specification Status: Released

**Electrical Rating**

Voltage: 14Vdc MAX  
Current: 100A MAX

**Terminal Material:**

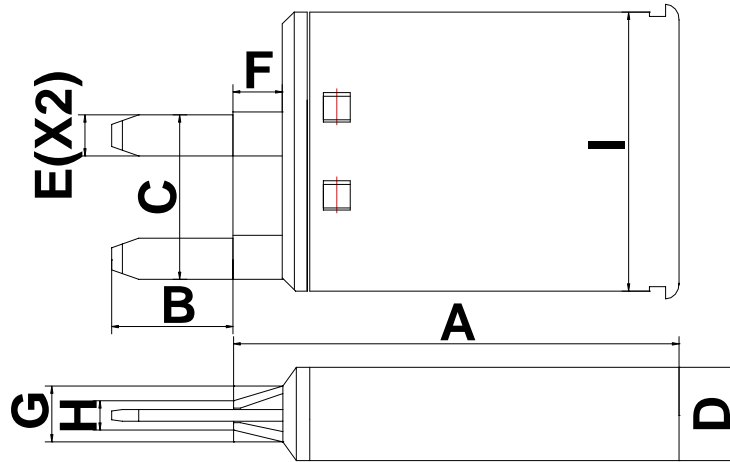
Brass H65  
Thickness: 0.8mm  
Tin plating thickness: 5µm

**Insulating Material:**

White color PBT, Meets  
UL94V-0 Requirements

**Marking:**

⊗ - Manufacturer's Mark  
14VDC - Voltage Rating  
BD280-1927-25 - Part ID  
□□□□ - Lot Number



**TABLE I. DIMENSIONS:**

	A		B		C		D		E		F	
	MIN	MAX	MIN	MAX	MIN	MAX	MIN	MAX	MIN	MAX	MIN	MAX
mm:	26.65	27.35	8.6	9.2	10.75	11.25	6.05	6.65	2.55	3.05	1.8	2.2
in*:	(1.049)	(1.077)	(0.339)	(0.362)	(0.423)	(0.443)	(0.238)	(0.262)	(0.1)	(0.12)	(0.071)	(0.087)

	G		H		I	
	MIN	MAX	MIN	MAX	MIN	MAX
	3.5	3.9	1.7	2.3	19	19.4
	(0.138)	(0.154)	(0.067)	(0.091)	(0.748)	(0.764)

\*Rounded off approximation

**TABLE II: PERFORMANCE RATINGS:**

INITIAL RESISTANCE VALUES		TIME TO TRIP AT 100AMPS	TRIP CURRENT AT Rmin	R1max ONE-HOUR POST-TRIP RESISTANCE	HOLD CURRENT AT R1max	TRIPPED-STATE POWER DISSIPATION
OHMS AT 25°C MIN	OHMS AT 25°C MAX	SECONDS AT 25°C MAX	AMPS AT 25°C MAX	OHMS AT 25°C MAX	AMPS AT 25°C MIN	WATTS AT 20°C, 14V TYP
0.0024	0.0033	13	32	0.0042	20	6.0

Reference Documents:  
Precedence:  
Effectivity:  
CAUTION:

PS300, PS400 & SAE-J2685  
This specification takes precedence over documents referenced herein.  
Reference documents shall be the issue in effect on the date of invitation or bid.  
Operation beyond the rated voltage or current may result in rupture, electrical arcing or flame.

**Materials Information**

ROHS Compliant

ELV Compliant

Pb-Free

