

## IEC Appliance Connector C14 with Line Switch 1- or 2-pole

new



Screw-On Version



Screw-On Version

C14



70° C

**Description**

- Panel Mount:  
Screw-on mounting on PCB/ from rear-side
- 2 Functions:  
Inlet Protection class I, Line switch 2-pole
- For PCB mounting
- Alternative: version with line filter [DC22](#)
- Substitute for type [KP \(Switch\)](#)

**Approvals**

- VDE License Number: 40007009
- UL License Number: E96454

**Characteristics**

- Ultra-compact design
- All single elements are already wired  
Unwired versions available on request
- Line switch non-illuminated or illuminated
- With or without rear-side insulation cover
- Ideal for application with high transient loads
- Qualified for use in equipment according IEC/EN 60950

**Other versions on request**

- Fixing on PCB with self-tapping screws 3 mm or pre-inserted nuts M3
- Other rocker marking
- For protection class II
- Without cover

**Weblinks**

[Approvals](#), [RoHS](#), [CHINA-RoHS](#), [e-Store](#), [SCHURTER-Stock-Check](#), [Distributor-Stock-Check](#)

**Technical Data**

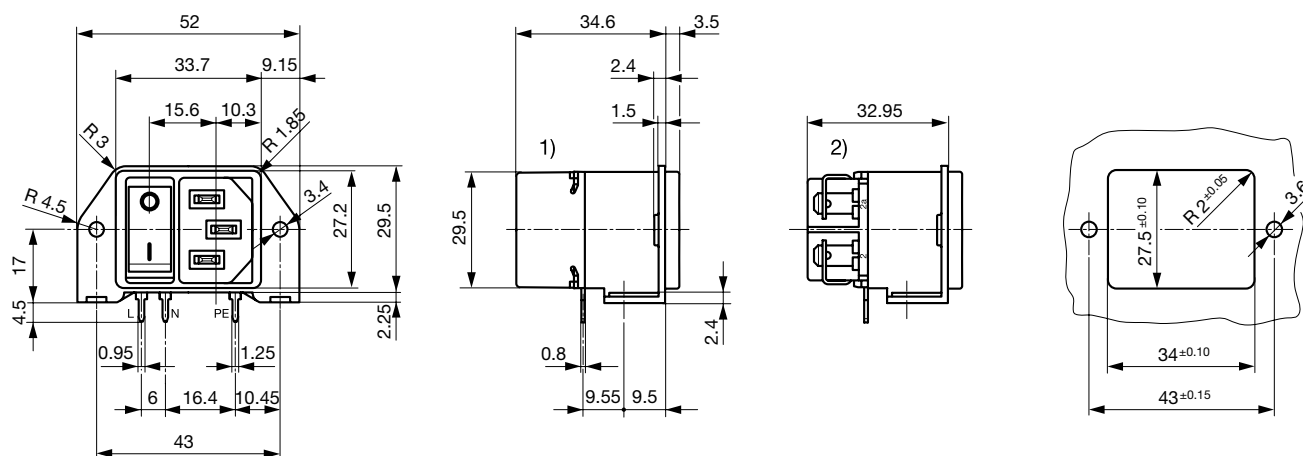
Ratings IEC	10 A / 250 VAC; 50 Hz
Ratings UL/CSA	11 A / 125 VAC; 60 Hz
Dielectric Strength	> 2.5 kVAC between L-N > 3 kVAC between L/N-PE (1 min/50 Hz)
Allowable Operation Temp.	-25 °C to 70 °C
Degree of Protection	from front side IP 40 acc. to IEC 60529
Protection Class	Suitable for appliances with protection class I acc. to IEC 61140
Terminal	For PCB mounting ; Ground terminal: Quick connect terminals 4.8 x 0.8 mm
Panel Thickness s	Screw-on: max 3.5 mm Mounting screw torque max 0.5 Nm
Material: Housing	Thermoplastic, black, UL 94V-0

Appliance-Inlet/-Outlet	C14 acc. to IEC/EN 60320-1, UL 498, CSA C22.2 no. 42 (for cold conditions) pin-temperature 70 °C, 10 A, Protection class I
Line Switch	Rocker switch 2-pole, non-illuminated or illuminated, acc. to IEC 61058-1 <a href="#">Technical details</a>

## Dimensions

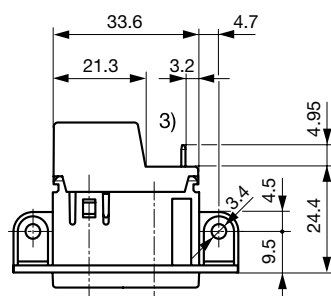
Screw-on mounting

Length | 38.1 mm



1) with cover

2) without cover

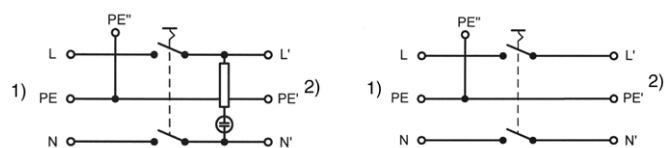


3) PE additionally as quick-connect terminal 4.8 x 0.8 mm

## Diagrams

Line switch illuminated 2-pole

Line switch non-illuminated 2-pole

1) Line  
2) Load1) Line  
2) Load

## Variants

Distributor-Stock-Check | SCHURTER-Stock-Check | e-Store

Panel mounting	Line Switch	Illumination	Color	Order Number
Screw-on	2-pole		-	DC21.0021.1111
Screw-on	2-pole	●	red	DC21.0023.1111
Screw-on	2-pole	●	green	DC21.0024.1111

## Packaging unit

40 Pcs

**Accessory****Description****Cord retaining kits**

Cord retaining strain relieve

Flat head, Z

0888.0021

Flat head, G

4700.0007