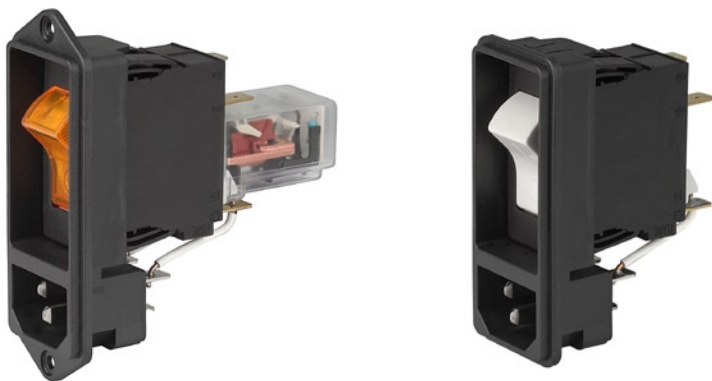


## IEC Appliance Connector C14 with CBE 1- or 2-pole



C14  
  
 70° C

**Description**

- Panel Mount:  
Screw-on version from front or rear side, snap-in version from front side
- 2 Functions:  
Inlet Protection class I, Fuseholder circuit breaker type TA45 2-pole
- Quick connect terminals 6.3 x 0.8 mm
- Alternative: version with line filter [DF12](#)
- Substitute for type [6145](#)

**Approvals**

- VDE License Number: 40011305
- UL License Number: E96454

**Characteristics**

- All single elements are already wired
- Line switch non-illuminated or illuminated  
Thermal overload protection  
Optional with undervoltage release or remote trip release
- Qualified for use in equipment according IEC/EN 60950

**Other versions on request**

- Unwired versions
- Line switch 1-pole
- Other rocker marking

**Weblinks**

[Approvals](#), [RoHS](#), [CHINA-RoHS](#), [e-Store](#), [SCHURTER-Stock-Check](#), [Distributor-Stock-Check](#)

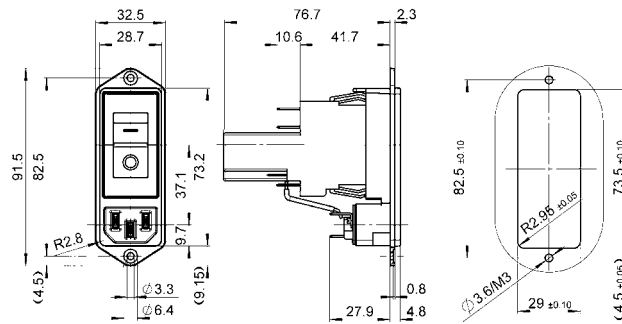
**Technical Data**

Ratings IEC	10A / 250VAC; 50Hz
Ratings UL/CSA	1 - 15A / 250VAC; 60Hz
Dielectric Strength	> 2.5kVAC between L-N > 3kVAC between L/N-PE (1 min/50Hz)
Allowable Operation Temp.	-10°C to 55°C
Degree of Protection	from front side IP 40 acc. to IEC 60529
Protection Class	Suitable for appliances with protection class I acc. to IEC 61140
Terminal	Quick connect terminals 6.3 x 0.8 mm
Panel Thickness s	Screw-on: max 8 mm Mounting screw torque max 0.5Nm Snap-in: 1/1.5/2/2.5/3 mm
Material: Housing	Thermoplastic, black, UL 94V-0

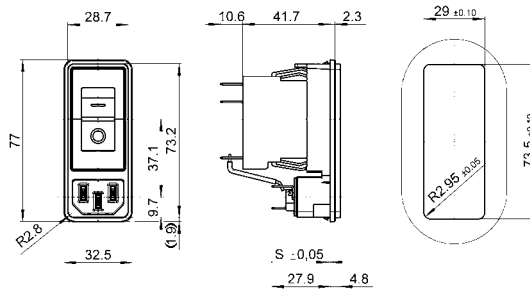
Appliance-Inlet/-Outlet	C14 acc. to IEC/EN 60320-1, UL 498, CSA C22.2 no. 42 (for cold conditions) pin-temperature 70 °C, 10A, Protection class I
Circuit breaker	Acc. IEC/EN 60934, UL 1077, CSA 22.2 no. 235 2-pole rocker switch, illuminated or non-illuminated. Optional with undervoltage- or remote trip release Short circuit capacity Icn: at $I_n < 3A/240VAC$ : $10 \times I_n$ at $I_n \geq 3A/240VAC$ : 300A
Line Switch	Rocker switch 2-pole, non-illuminated or illuminated, acc. to IEC 61058-1 <a href="#">Technical details</a>

## Dimensions

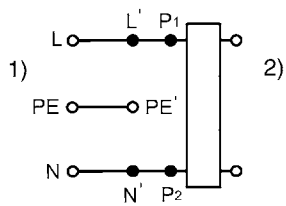
Length |-----| 91.5 mm



\* Version TA45 with undervoltage release



## Diagrams



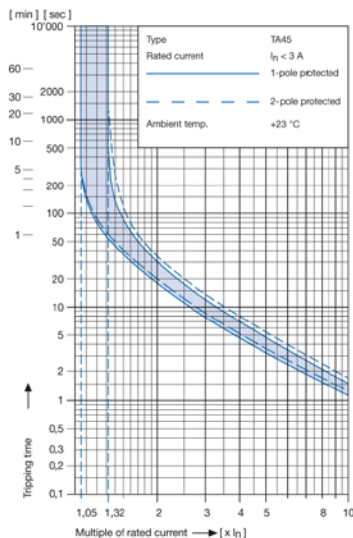
1) Line  
2) Load

Technical data (continued)

Circuit breaker

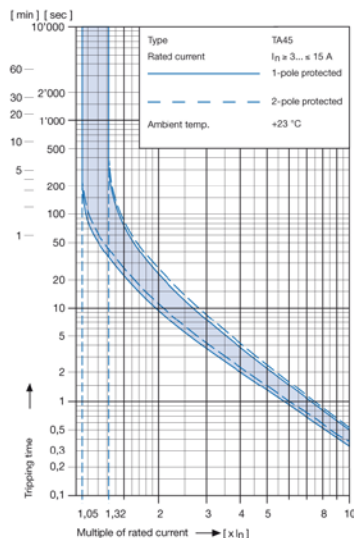
Tripping characteristics

$I_n < 3 A$



Tripping characteristics

$I_n \ge 3 \dots \le 15 A$



Effect of ambient temperature <sup>1)</sup>

The unit is calibrated for an ambient temperature of +23 °C. To determine the rated current for a lower or higher ambient temperature, use a correction factor from the table below.

\* Ambient temperature [°C] Correction factor

-10	0,89
- 5	0,91
0	0,92
+23	1,00
+30	1,03
+40	1,08
+55	1,16

\* Temperature must be measured at the rear of the breaker next to the terminals after equipment operating temperature has been reached.

<sup>1)</sup> Example

Rated current at +23 °C	6,0 A
Ambient temperature	+40 °C
Correction factor	1,08
Chosen rated current at +40 °C ambient temperature	6 A x 1,08 = 6,5 A

Order code (Order example)

<b>Type</b>	<b>Order code TA 45</b> (2-pole rocker-switch without accessories)	
<b>DF11.</b>	<b>A B T W F 1 5 0 C 0</b> see table 1	

- Wiring**  
1 wired  
2 unwired
- Protection class**  
0 Protection class I
- Mounting**  
0 Screw  
1 Snap-in s = 1.0 mm  
2 Snap-in s = 1.5 mm  
3 Snap-in s = 2.0 mm  
4 Snap-in s = 2.5 mm  
5 Snap-in s = 3.0 mm
- Terminals**  
1 Quick connect 6.3 x 0.8  
0 Without line filter

Please note that Schurter will establish an internal part number for logistical use in addition to the order code. The format of this internal part number is, for example DF12.xxxxxx

**Table 1 Selection for type TA45**

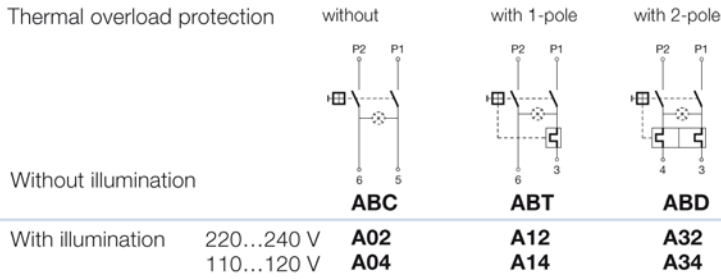
Order example



- Line switch
- 2-pole, rocker actuated
- Quick connect terminal
- Other types on request

ABT W F 150 C0

**Diagram**



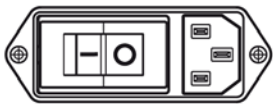
**Colours**

Switch front	Rocker	
<b>W</b> black	white	—
<b>B</b> black	black	—
<b>6</b> black	—	orange transp.

**Rocker legend**

Surface	Illustration	Colour of print	Surface	Illustration	Colour of print
<b>F</b> embossed / Relief		—	<b>M</b> printed		black
<b>H</b> printed / bedruckt		white / weiss	<b>P</b> printed		white
<b>K</b> printed / bedruckt		black / schwarz	<b>R</b> printed		black
<b>L</b> printed / bedruckt		white / weiss			

Position of the rocker legend  
e.g F



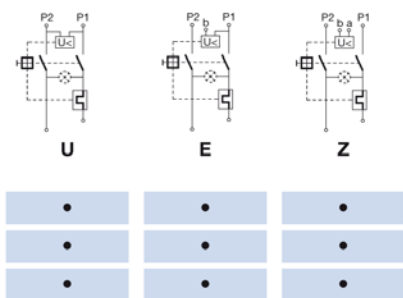
**Rated current:**

- Without thermal overload protection: code C00 }  $I_n = 20\text{ A}$
- With thermal overload protection: rated current  $I_n$  (A)

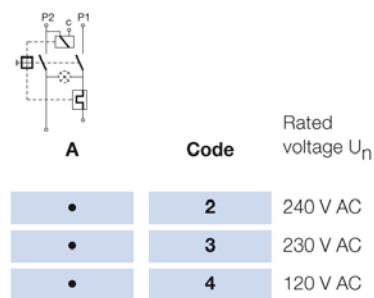
$I_n$	Code	$I_n$	Code	$I_n$	Code	$I_n$	Code
0,1	J01	1,3	J13	2,8	J28	10,0	100
0,2	J02	1,4	J14	3,0	030	11,0	110
0,3	J03	1,5	J15	3,5	035	12,0	120
0,4	J04	1,6	J16	4,0	040	13,0	130
0,5	J05	1,7	J17	4,5	045	14,0	140
0,6	J06	1,8	J18	5,0	050	15,0	150
0,7	J07	1,9	J19	6,0	060		
0,8	J08	2,0	J20	6,5	065		
0,9	J09	2,1	J21	7,0	070		
1,0	J10	2,2	J22	7,5	075		
1,1	J11	2,3	J23	8,0	080		
1,2	J12	2,5	J25	9,0	090		

**Without release: code C0**

**Undervoltage release**



**Remote trip release**



**Packaging unit**      20 Pcs

---

**Accessory**

**Description**



Assorted Covers  
Rear Cover



0859.0109  
Rear Cover

---