

DESCRIPTION OF REVISIONS	BY	CHKD	DATE	COUNT	DESCRIPTION OF REVISIONS	BY	CHKD	DATE
△				△				
△				△				

APPLICABLE STANDARD				
RATING	OPERATING TEMPERATURE RANGE	-35 °C TO +85 °C (NOTE1)	STORAGE TEMPERATURE RANGE	-10 °C TO 60 °C
	VOLTAGE	50 V AC	APPLICABLE CONNECTOR	DF15#(**)-20DS-0.65V(01)
	CURRENT	0.3 A		

SPECIFICATIONS

ITEM	TEST METHOD	REQUIREMENTS	QT	AT
------	-------------	--------------	----	----

CONSTRUCTION				
GENERAL EXAMINATION	VISUALLY AND BY MEASURING INSTRUMENT.		ACCORDING TO DRAWING.	
MARKING	CONFIRMED VISUALLY.		○	○
			○	○

ELECTRICAL CHARACTERISTICS				
CONTACT RESISTANCE	100 mA (DC OR 1000 Hz).	50 mΩ MAX.	○	-
CONTACT RESISTANCE MILLIVOLT LEVEL METHOD.	20 mV MAX, mA(DC OR 1000 Hz).	mΩ MAX.	-	-
INSULATION RESISTANCE	100 VDC.	500 MΩ MIN.	○	-
VOLTAGE PROOF	150 VAC FOR 1 min.	NO FLASHOVER OR BREAKDOWN.	○	-

MECHANICAL CHARACTERISTICS				
CONTACT INSERTION AND EXTRACTION FORCES	- BY STEEL GAUGE.	INSERTION FORCE - N MAX. EXTRACTION FORCE - N MIN.	-	-
INSERTION AND WITHDRAWAL FORCES	MEASURED BY APPLICABLE CONNECTOR.	INSERTION FORCE 12 N MAX. EXTRACTION FORCE 1 N MIN.	○	-
MECHANICAL OPERATION	50 TIMES INSERTIONS AND EXTRACTIONS.	① CONTACT RESISTANCE: 50 mΩ MAX. ② NO DAMAGE, CRACK AND LOOSENESS, OF PARTS.	○	-
VIBRATION	FREQUENCY 10 TO 55 Hz, SINGLE AMPLITUDE 0.75 mm, - m/s ² AT 2 h, FOR 3 DIRECTIONS.	① NO ELECTRICAL DISCONTINUITY OF 1 μs. ② CONTACT RESISTANCE: 50 mΩ MAX. ③ NO DAMAGE, CRACK AND LOOSENESS, OF PARTS.	○	-
SHOCK	490 m/s ² DURATION OF PULSE 11 ms AT 3 TIMES FOR 3 DIRECTIONS.	① NO ELECTRICAL DISCONTINUITY OF 1 μs. ② CONTACT RESISTANCE: 50 mΩ MAX. ③ NO DAMAGE, CRACK AND LOOSENESS, OF PARTS.	○	-

ENVIRONMENTAL CHARACTERISTICS				
DAMP HEAT (STEADY STATE)	EXPOSED AT 40±2 °C, 90 TO 95 %, 96 h.	① CONTACT RESISTANCE: 50 mΩ MAX. ② INSULATION RESISTANCE: 500 MΩ MIN. ③ NO DAMAGE, CRACK AND LOOSENESS, OF PARTS.	○	-
RAPID CHANGE OF TEMPERATURE	TEMPERATURE -55→5 TO 35→85→5 TO 35 °C TIME 30→10 TO 15→30→10 TO 15 min UNDER 5 CYCLES.	① CONTACT RESISTANCE: 50 mΩ MAX. ② INSULATION RESISTANCE: 500 MΩ MIN. ③ NO DAMAGE, CRACK AND LOOSENESS, OF PARTS.	○	-
CORROSION SALT MIST	EXPOSED IN 5% SALT WATER SPRAY FOR 48 h.	① CONTACT RESISTANCE: 50 mΩ MAX. ② NO HEAVY CORROSION.	○	-
SULPHUR DIOXIDE	EXPOSED IN 10 PPM FOR 96h. (TEST STANDARD: JEIDA-39)	① CONTACT RESISTANCE: 50 mΩ MAX. ② NO HEAVY CORROSION.	○	-

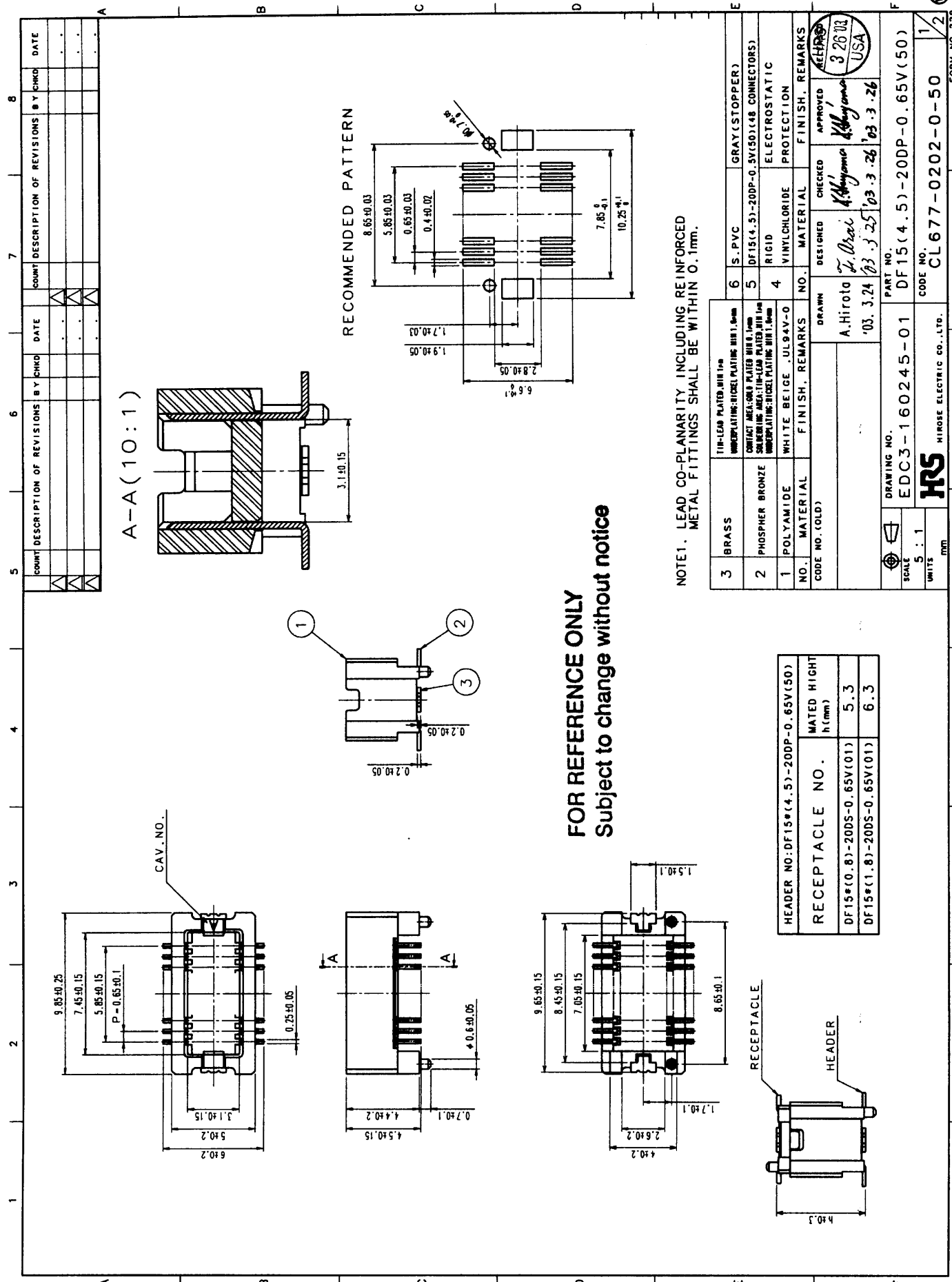
REMARKS NOTE1: INCLUDE THE TEMPERATURE RISING BY CURRENT.	DRAWN	DESIGNED	CHECKED	APPROVED	RELEASED
	A.Hirota '03.3.24	T. Arai '03.3.25	K. Hayama '03.3.25	K. Hayama '03.3.25	HRS 3 26 03 USA
Unless otherwise specified, refer to MIL-STD-1344.					
Note QT: Qualification Test AT: Assurance Test O: Applicable Test					

HRS HIROSE ELECTRIC CO., LTD.		SPECIFICATION SHEET		PART NO. DF15(4.5)-20DP-0.65V(50)	
CODE NO.(OLD) CL	DRAWING NO. ELC4-160245-01	CODE NO. CL677-0202-0-50	1/1		

FOR REFERENCE ONLY
Subject to change without notice

TO





FOR REFERENCE ONLY
Subject to change without notice

NOTE 1. LEAD CO-PLANARITY INCLUDING REINFORCED METAL FITTINGS SHALL BE WITHIN 0.1mm.

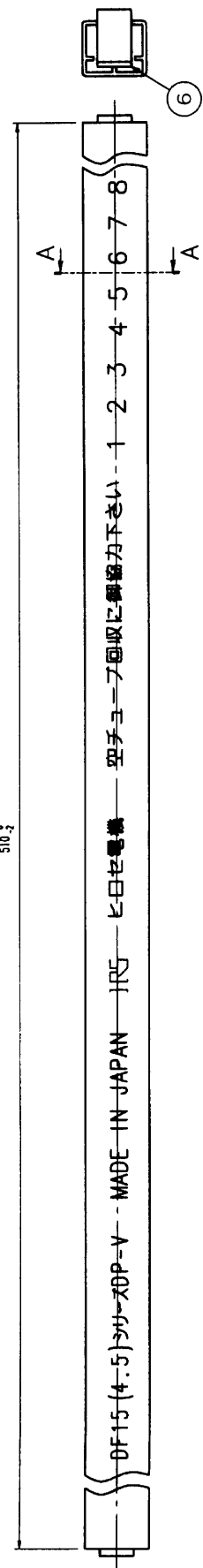
3	BRASS	TIN-LEAD PLATED MIN 1µm	6	S. PVC	GRAY (STOPPER)
2	PHOSPHOR BRONZE	CONTACT WELDABLE PLATED MIN 0.1µm SOLDERABLE WELDABLE PLATED MIN 1µm	5	DF15*(4.5)-20DP-0.65V(50)	(48 CONNECTORS)
1	POLYAMIDE	WHITE BEIGE .UL94V-0	4	RIGID	ELECTROSTATIC PROTECTION
NO.	MATERIAL	FINISH, REMARKS	NO.	MATERIAL	FINISH, REMARKS
CODE NO. (OLD)			DESIGNED	CHECKED	APPROVED
			DRAWN A. Hiroto '03. 3.24 '03. 3.25 '03. 3.26 '03. 3.26 K. Hayama K. Hayama USA		
DRAWING NO.		PART NO.		REMARKS	
EDC3-160245-01		DF15(4.5)-20DP-0.65V(50)			
SCALE	5 : 1	UNITS	mm		
HRS		MIROSE ELECTRIC CO., LTD.		CL 677-0202-0-50	
				FORM NO. 228	

6	7	8		
COUNT	DESCRIPTION OF REVISIONS	BY	CHKD.	DATE

TO	NC
----	----

COUNT		DESCRIPTION OF REVISIONS		BY		DATE		DESCRIPTION OF REVISIONS		BY		DATE	
1	2	3	4	5	6	7	8	9	10	11	12	13	14
△	△	△	△	△	△	△	△	△	△	△	△	△	△

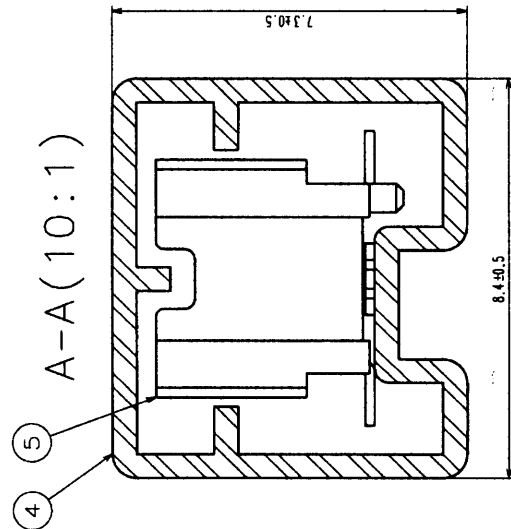
510-2



DF15 (4.5) 空子 ユーブ 取付に 解 締 力 下 さい 1 2 3 4 5 6 7 8

FOR REFERENCE ONLY
Subject to change without notice

NOTES 2. MINIMUM UNIT OF PURCHASE SHALL BE
 THE QUANTITY OF CONNECTORS IN TUBE (48 PIECES).
 3. THE SUFFIX OF CODE NO. SHELL BE '-50'



TO			
----	--	--	--

CODE NO. (OLD)	DRAWN	DESIGNED	CHECKED	APPROVED	PREPARED
	A. Hirota	T. Orai	K. Oguma	K. Oguma	HRS
	'03. 3. 24	'03. 3. 25	'03. 3. 25	'03. 3. 25	3 26 103
DRAWING NO.	PART NO.	HRS USA			
EDC3-160245-01	DF15(4.5)-200P-0.65V(50)				
SCALE	CODE NO.				
FREE	CL677-0202-0-50				
UNITS					
MM					

