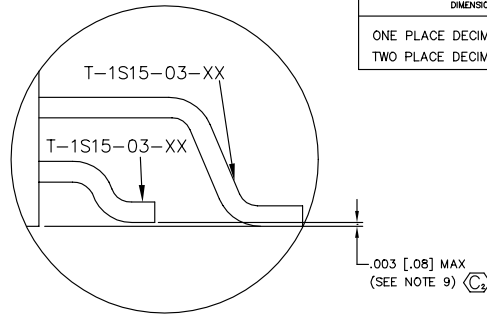


REVISION AX

DO NOT SCALE FROM THIS PRINT

TABLE 1	
LEAD STYLE	"A"
-01	.120 [3.05]
-02	.075 [1.91]
-04	.150 [3.81]



DETAIL "A"
SCALE: 2x

PLOT SCALE: .150/ DIMSCALE: .100

DIMENSIONS ARE IN INCHES UNLESS OTHERWISE NOTED		TOLERANCES ARE:	TITLE:	DWG NO:
ONE PLACE DECIMALS ± .1[2.54]	THREE PLACE DECIMALS ± .005[.13]	ANGLES ± 1°	.050 x .050 C.L. DOUBLE HORIZONTAL TERMINAL STRIP	FTSH-1XX-XX-XXX-DH-XX SHEET 1 OF 2
TWO PLACE DECIMALS ± .01[.25]	FOUR PLACE DECIMALS ± .0010[.025]			

FTSH-1XX-XX-XXX-DH-XX

No. OF POSITIONS
-02 THRU -50
(PER ROW)
LEAD STYLE
-01: .120 [3.05]
(USE T-1S15-03-XX)
-02: .075 [1.91]
(USE T-1S15-03-XX)
-04: .150 [3.81]
(USE T-1S15-03-XX)

OPTIONS

- TR: TAPE AND REEL
- A: ALIGNMENT PIN (SEE FIG. 3 & 4, SHT. 2)
(USE FTSH-XX-DH-XXX-AXX)
(MOLDED TO POSITION OR STAKED)
(SAMTEC DISCRETION WHICH -A PIN IS USED)
(STAKED 8 POSITION MIN. SEE FIG. 3, SHT. 2)
(MOLDED 5 POSITION MIN. SEE FIG. 4, SHT. 2)
- C: POLYIMIDE FILM (SEE FIG. 5, SHT. 2)

PLATING

- L: LIGHT SELECTIVE
(USE T-1S15-XX-L)
- F: FLASH SELECTIVE
(USE T-1S15-XX-F)
- S: SELECTIVE GOLD
(USE T-1S15-XX-S)
- H: HEAVY SELECTIVE
(USE T-1S15-XX-H)
- LM: LIGHT SELECTIVE MATTE
(USE T-1S15-XX-L)
- FM: FLASH SELECTIVE MATTE
(USE T-1S15-XX-F)
- SM: SELECTIVE GOLD MATTE
(USE T-1S15-XX-S)
- LTL: LIGHT SELECTIVE TIN/LEAD
(USE T-1S15-XX-LTL)

TAIL OPTION

- DH: DOUBLE HORIZONTAL
(USE FTSH-XX-DH)

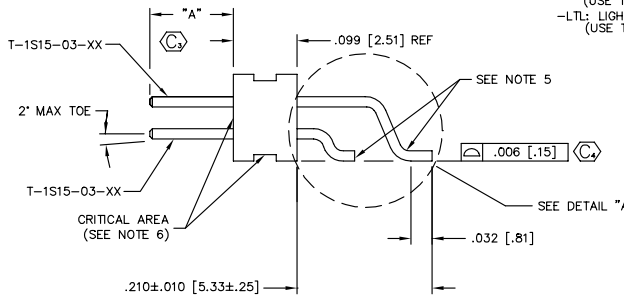
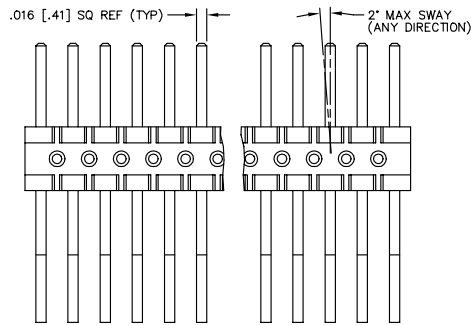
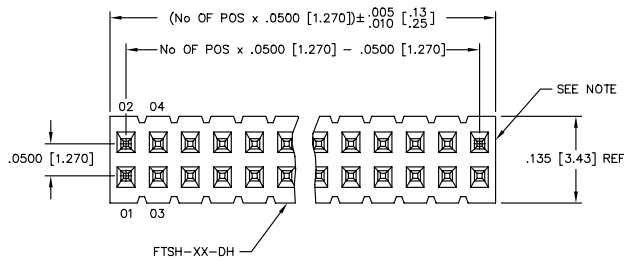


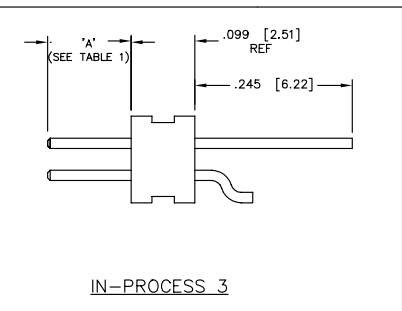
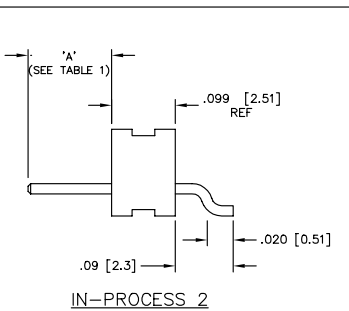
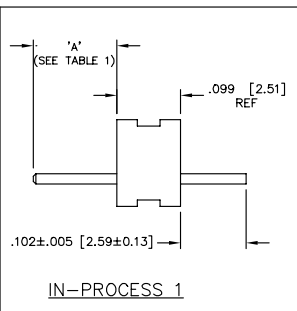
TABLE 3	
No. OF POS. PER FINISHED ASSM	No. OF FINISHED ASSEMBLIES PER FULL STRIP
4 - 5	10
6 - 10	5
11 - 16	3
17 - 25	2
26 - 50	1

FIG 1

PATENT NUMBERS
5713755 / 5961339

NOTES:

- ② REPRESENTS A CRITICAL DIMENSION
- NOTE 2 DELETED.
- NOTE 3 DELETED.
- MINIMUM PUSH OUT FORCE: .5 LB.
- .002 MAX BURR ALLOWED.
- .010 MAX CUT FLASH ALLOWED IN NON-CRITICAL AREA, NO CUT FLASH ALLOWED IN CRITICAL AREAS AS SHOWN.
- NOTE DELETED.
- MAX HEIGHT VARIATION .005 [.13] BETWEEN ROWS.
- ② PIN 1 AND 2 TO BE FLUSH TO .0030 [.076] ABOVE BODY.



PROPRIETARY NOTE
THIS DOCUMENT CONTAINS INFORMATION CONFIDENTIAL AND PROPRIETARY TO SAMTEC INC. AND SHALL NOT BE REPRODUCED OR TRANSMITTED IN ANY FORM OR BY ANY MEANS, ELECTRONIC OR MECHANICAL, INCLUDING PHOTOCOPYING, RECORDING, OR BY ANY INFORMATION STORAGE AND RETRIEVAL SYSTEM, WITHOUT THE WRITTEN CONSENT OF SAMTEC INC.

MATERIAL:
INSULATOR:
BLACK LIQUID CRYSTAL POLYMER,
30% GLASS FILLED

TERMINAL:
PHOSPHOR BRONZE, ALLOY
NO. 510, GRADE A, FED. SPEC.
QQ-B-750, SPRING TEMPER



520 PARK EAST BLVD. NEW ALBANY, INDIANA 47150
PHONE (812) 944-6733 P.O. BOX 1147
CODE 55322

MADE BY: BRATCHER 1-4-95

FTSH-1XX-XX-XXX-DH-XX
SHEET 1 OF 2