

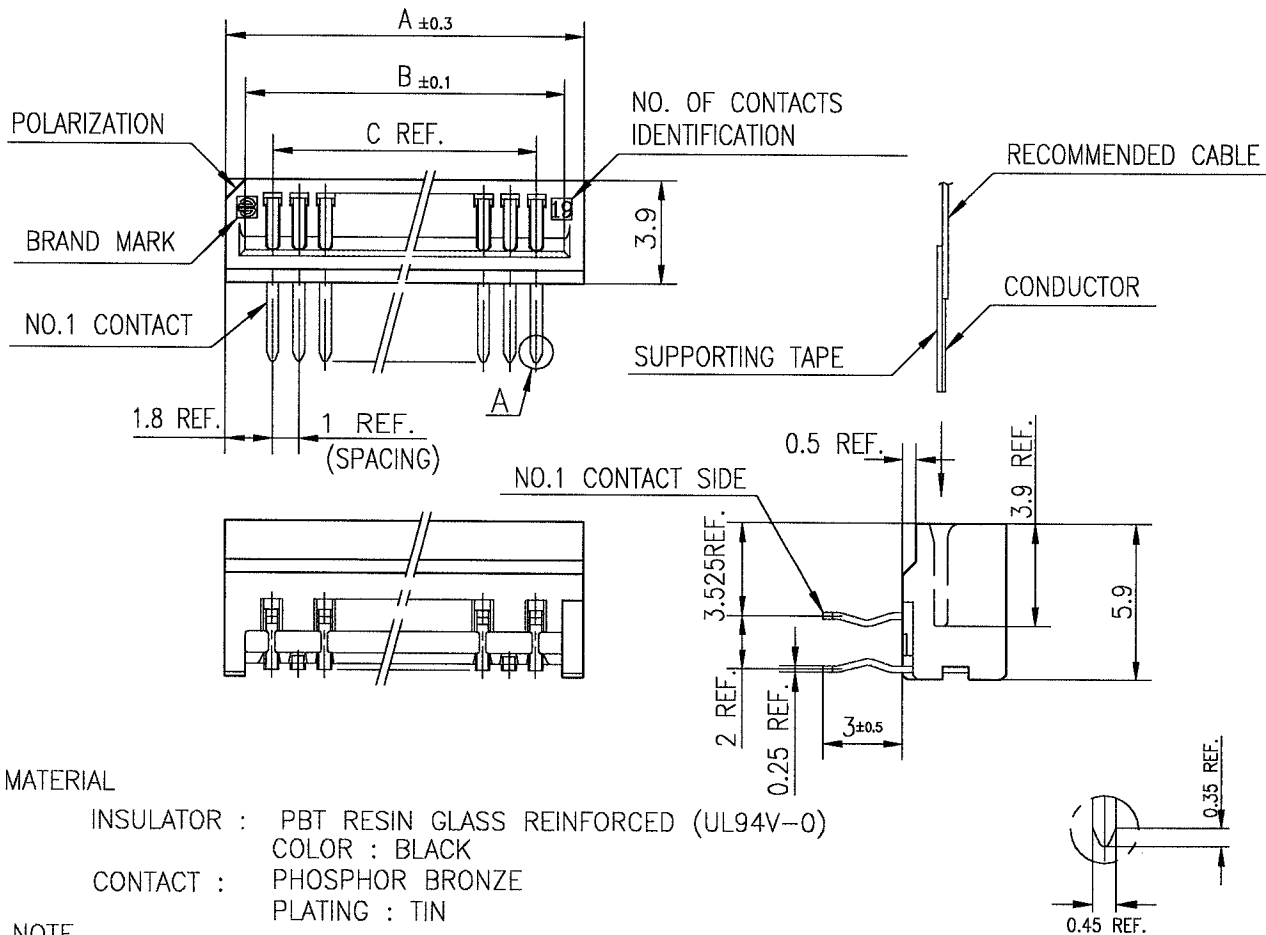
CAT. NO. & DIMENSIONS

CAT. NO.	HLW	(n)	R	- 2C7	LF
SERIES					
NO. OF CONTACTS					
R : RIGHT ANGLE TYPE					
S : STRAIGHT TYPE					
VARIATION					
LEAD FREE					

1. SEE PART DRAWINGS FOR
DIMENSIONS A~C.

SC-HL W05 JSA96405 96406 93382 93383

REVISIONS				
REV	DESCRIPTION	ECN	BY	DATE
A	RELEASED	J05-0270	H.T	5/10/05
B	Added heat resistance	J05-0735	H.T	10/28/05



MATERIAL

INSULATOR : PBT RESIN GLASS REINFORCED (UL94V-0)
 COLOR : BLACK
 CONTACT : PHOSPHOR BRONZE
 PLATING : TIN

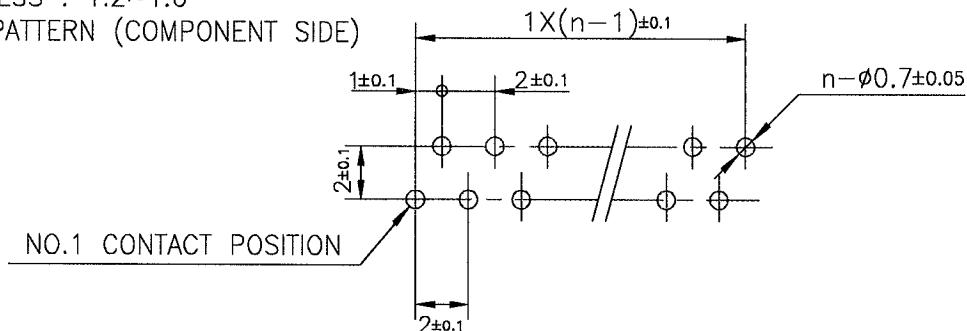
NOTE

- 1.THIS PRODUCT IS RIGHT ANGLE TYPE CONNECTOR.
- 2.THIS PRODUCT MEETS EUROPEAN UNION DIRECTIVES AND OTHER COUNTRY REGULATIONS AS DESCRIBED IN GS-22-008.
- 3.THE HOUSING WILL WITHSTAND EXPOSURE TO 260°C PEAK TEMPERATURE FOR 10 SECONDS IN A WAVE SOLDER APPLICATION WITH A 1.6mm THICK CIRCUIT BOARD.

RECOMMENDED PC BORAD

THICKNESS : 1.2~1.6
 HOLE PATTERN (COMPONENT SIDE)

n : NO. OF CONTACTS



SHEET INDEX	ISSUE	B															
	SH NO.	1															
TOLERANCES UNLESS OTHERWISE SPECIFIED			DR		DATE		CUSTOMER COPY		TITLE 1mm SPACING CONNECTOR FOR FPC/FFC (Cat. No. :HLW__R-2C7LF)								
±0.2			ENGR		10/28/05												
LINEAR			CHK		10/31/05		THIRD ANGLE PROJ		PRODUCT FAMILY 58JF								
ANGLES			APPD		11/1/05		UNIT										
DO NOT SCALE PRINT			THIS INFORMATION IS CONFIDENTIAL AND IS DISCLOSED TO YOU ON CONDITION THAT NO FURTHER DISCLOSURE IS MADE BY YOU TO OTHER THAN FCI PERSONNEL WITHOUT WRITTEN AUTHORIZATION FROM FCI JAPAN K.K.										SCALE	SIZE	DWG. NO.	REV	SHEET
DF-140A REV A													×	A	JSA 96405	B	1 of 1

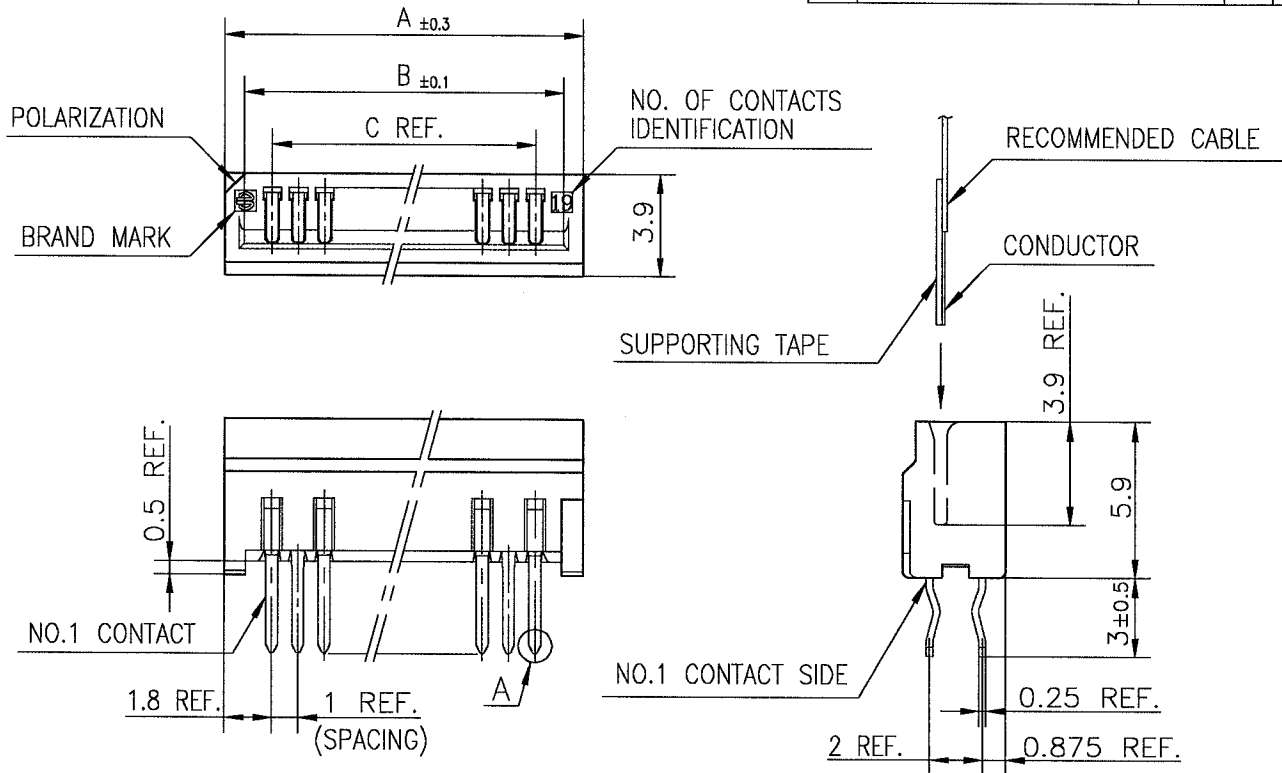
SC-HLW05 JSA96403

PDM: Rev:B

STATUS:Released

Printed: Nov 29, 2005

REVISIONS				
REV	DESCRIPTION	ECN	BY	DATE
A	RELEASED	J05-0270	H.T	5/10/05
B	Added heat resistance	J05-0735	H.T	10/28/05



MATERIAL

INSULATOR : PBT RESIN GLASS REINFORCED (UL94V-0)

COLOR : BLACK

CONTACT : PHOSPHOR BRONZE

PLATING : TIN

NOTE 1. THIS PRODUCT IS STRAIGHT TYPE CONNECTOR.

2. THIS PRODUCT MEETS EUROPEAN UNION DIRECTIVES AND OTHER COUNTRY REGULATIONS AS DESCRIBED IN GS-22-008.

3. THE HOUSING WILL WITHSTAND EXPOSURE TO 260°C PEAK TEMPERATURE FOR 10 SECONDS IN A WAVE SOLDER APPLICATION WITH A 1.6mm THICK CIRCUIT BOARD.

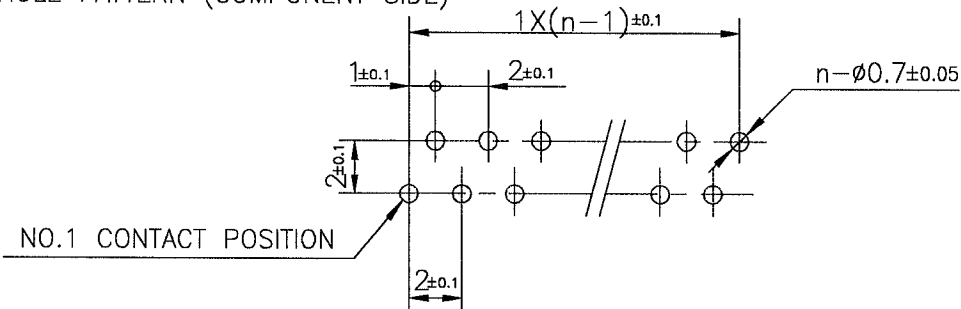
DETAIL A

RECOMMENDED PC BOARD

THICKNESS : 1.2~1.6

HOLE PATTERN (COMPONENT SIDE)

n : NO. OF CONTACTS



SHEET INDEX	ISSUE	B											
	SH NO.	1											
TOLERANCES UNLESS OTHERWISE SPECIFIED			DR	DATE			CUSTOMER COPY	<div style="text-align: center;"> <p>1mm SPACING CONNECTOR FOR FPC/FFC (Cat. No. :HLW__S-2C7LF)</p> </div>					
LINEAR	±0.2	ENGR	10/28/05			THIRD ANGLE PROJ							
		CHK	10/31/05										
		APPD	11/1/05										
ANGLES						UNIT	MM	PRODUCT FAMILY		58JF	CODE JP		
DO NOT SCALE PRINT			THIS INFORMATION IS CONFIDENTIAL AND IS DISCLOSED TO YOU ON CONDITION THAT NO FURTHER DISCLOSURE IS MADE BY YOU TO OTHER THAN FCI PERSONNEL WITHOUT WRITTEN AUTHORIZATION FROM FCI JAPAN K.K.					SCALE	SIZE	DWG. NO.	REV	SHEET	
DF-140A REV A								X	A	JSA 96406	B	1 of 1	

SC-HLW05 JSA96403

PDM: Rev:B

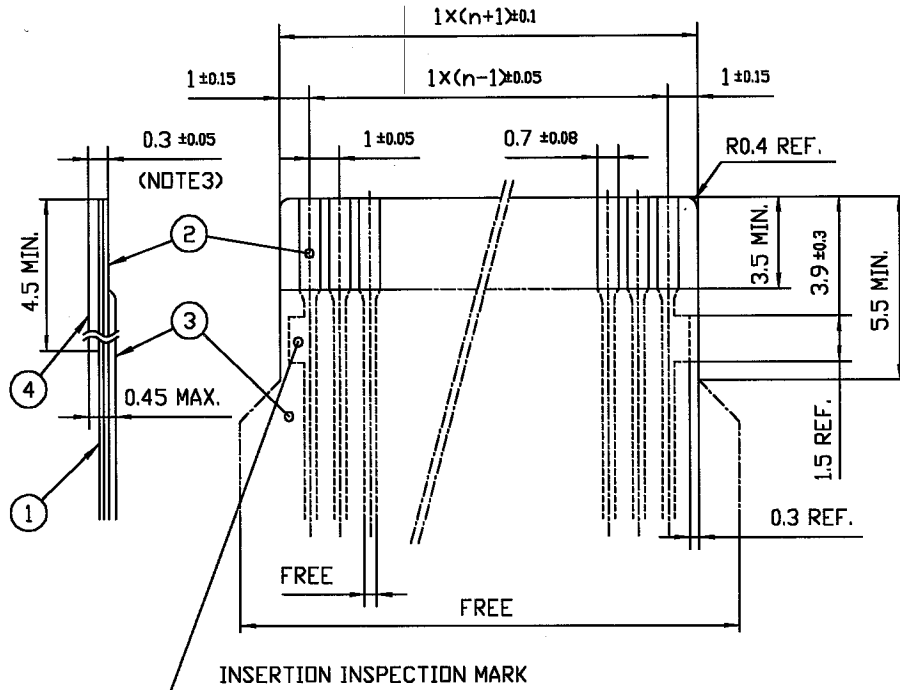
STATUS: Released

Printed: Nov 29, 2005

REVISIONS				
REV	DESCRIPTION	ECN	BY	DATE
AA	Changed form	J05-0270	H.T	5/11/05

RECOMMENDED CABLE (FPC)


n : NO. OF CONDUCTORS



PT. NO.	DESCRIPTION	MATERIAL	THICKNESS (μm)
1	BASE FILM	POLYIMIDE OR POLYESTER OR EQUIVALENT	25
2	CONDUCTOR	COPPER FOIL (PLATING : SOLDER 1μm MIN.)	35
3	OVERLAY	POLYIMIDE OR POLYESTER OR EQUIVALENT	—
4	SUPPORTING TAPE	POLYESTER OR POLYIMIDE OR EQUIVALENT	188

NOTES

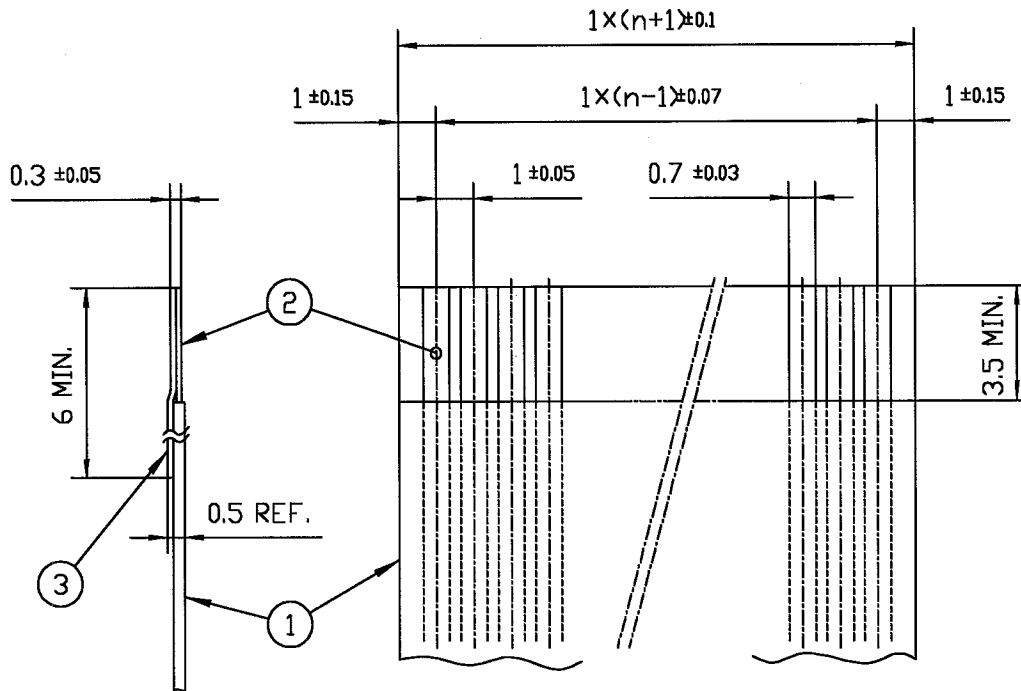
1. NO BURR AT EACH PORTION.
2. NO PEELING IN COMMON USE.
3. TOTAL THICKNESS LIMIT OF EACH MATERIAL (INCLUDING ADHESIVE AGENT) IS SPECIFIED.

SHEET INDEX	ISSUE	AA																	
	SH NO.	1																	
TOLERANCES UNLESS OTHERWISE SPECIFIED		DR <i>T. Sasaki</i>		DATE 5/11/05		CUSTOMER COPY		TITLE RECOMMENDED CABLE (FPC) (Cat. No. HLW__R/S-__)											
LINEAR		ENGR <i>H. Takahara</i>		5/13/05		THIRD ANGLE PROJ													
ANGLES		CHK <i>H. Takahara</i>		5/13/05		UNIT $\frac{MM}{INCH}$		PRODUCT FAMILY 58JF											CODE JP
DO NOT SCALE PRINT		THIS INFORMATION IS CONFIDENTIAL AND IS DISCLOSED TO YOU ON CONDITION THAT NO FURTHER DISCLOSURE IS MADE BY YOU TO OTHER THAN FCI PERSONNEL WITHOUT WRITTEN AUTHORIZATION FROM FCI JAPAN K.K.										SCALE 4/1	SIZE A	DWG. NO. JSA93382	REV AA	SHEET OF			

REVISIONS				
REV	DESCRIPTION	ECN	BY	DATE
AA	Changed form	J05-0274	H.T	5/11/05

RECOMMENDED CABLE (FFC)


n : NO. OF CONDUCTORS



PT. NO.	DESCRIPTION	MATERIAL	NOTE
1	INSULATOR	FLAME RESISTING POLYESTER OR EQUIVALENT	
2	CONDUCTOR	COPPER FOIL	PLATING : TIN OR SOLDER 1μm MIN.
3	SUPPORTING TAPE	FLAME RESISTING POLYESTER OR EQUIVALENT	

NOTES

1. NO BURR AT EACH PORTION.
2. NO PEELING IN COMMON USE.

SHEET INDEX	ISSUE	AA																	
	SH NO.	1																	
TOLERANCES UNLESS OTHERWISE SPECIFIED			DR <i>T. Sasaki</i>		DATE 5/11/05		CUSTOMER COPY		TITLE RECOMMENDED CABLE(FFC) (Cat. No. HLW__R/S-__)										
LINEAR			ENGR <i>H. Takahara</i>		5/13/05		THIRD ANGLE PROJ												
ANGLES			CHK <i>H. Takahara</i>		5/13/05		UNIT MM INCH		PRODUCT FAMILY										CODE JP
DO NOT SCALE PRINT			THIS INFORMATION IS CONFIDENTIAL AND IS DISCLOSED TO YOU ON CONDITION THAT NO FURTHER DISCLOSURE IS MADE BY YOU TO OTHER THAN FCI PERSONNEL WITHOUT WRITTEN AUTHORIZATION FROM FCI JAPAN K.K.										SCALE	SIZE	DWG. NO.	REV	SHEET		
DF-140A REV A													-	A	JSA 93383	AA	OF		

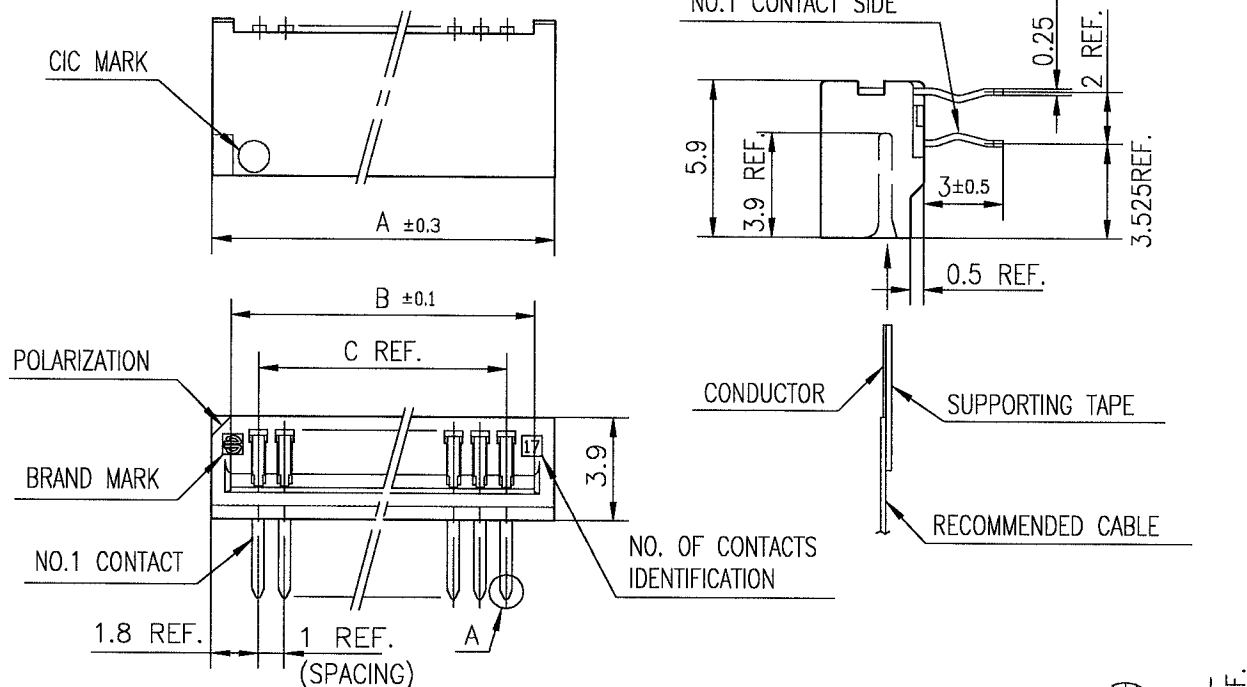
CAT. NO. & DIMENSIONS

CAT. NO.	HLW	(n)	R	- 6C7	LF
SERIES _____					
NO. OF CONTACTS _____					
R : RIGHT ANGLE TYPE					
S : STRAIGHT TYPE					
VARIATION _____					
LEAD FREE _____					

1. SEE PART DRAWINGS FOR
DIMENSIONS A~C.

SC-HI W06 ISA96407 96408 93626

REVISIONS				
REV	DESCRIPTION	ECN	BY	DATE
A	RELEASED	J05-0270	H.T	5/10/05
B	Added heat resistance	J05-0735	H.T	10/28/05



MATERIAL

INSULATOR : PBT RESIN GLASS REINFORCED (UL94V-0)

COLOR : BLACK

CONTACT : PHOSPHOR BRONZE

PLATING : TIN

NOTE

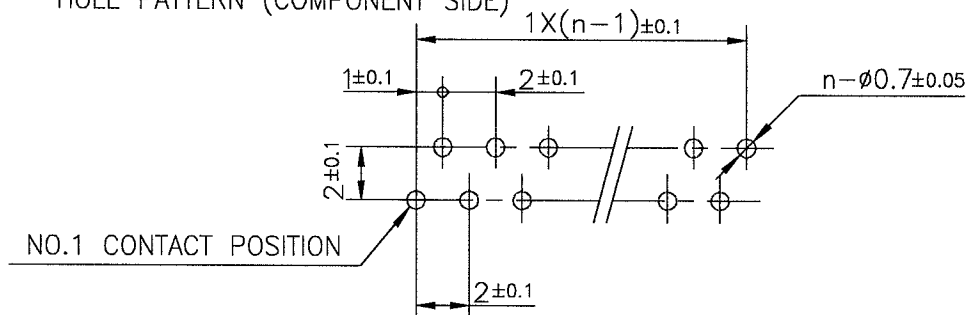
1. THIS PRODUCT IS RIGHT ANGLE TYPE CONNECTOR.
2. THIS PRODUCT MEETS EUROPEAN UNION DIRECTIVES AND OTHER COUNTRY REGULATIONS AS DESCRIBED IN GS-22-008.
3. THE HOUSING WILL WITHSTAND EXPOSURE TO 260°C PEAK TEMPERATURE FOR 10 SECONDS IN A WAVE SOLDER APPLICATION WITH A 1.6mm THICK CIRCUIT BOARD.


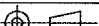
RECOMMENDED PC BORAD

THICKNESS : 1.2~1.6

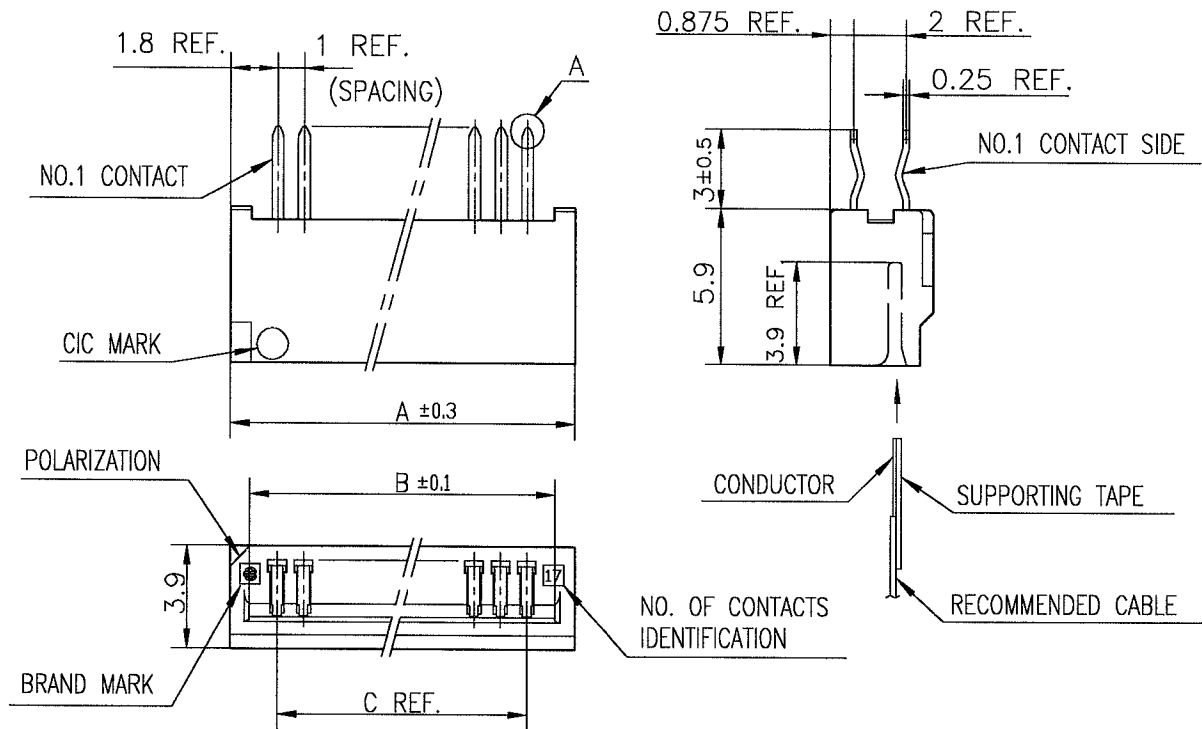
HOLE PATTERN (COMPONENT SIDE)

n : NO. OF CONTACTS



SHEET INDEX	ISSUE	B																												
	SH NO.	1																												
TOLERANCES UNLESS OTHERWISE SPECIFIED			DR <i>M. Matsuyama</i>		DATE <i>10/28/05</i>		CUSTOMER COPY		TITLE 1mm SPACING CONNECTOR FOR CIC (Cat. No. :HLW__R-6C7LF)																					
LINEAR	± 0.2		ENGR		<i>H. Hatakeyama</i>		<i>10/31/05</i>														THIRD ANGLE PROJ									
			CHK		<i>H. Hatakeyama</i>		<i>10/31/05</i>				UNIT $\frac{MM}{INCH}$																			
			APPD		<i>D. de la...</i>		<i>11/1/05</i>																							
ANGLES											CODE JP																			
DO NOT SCALE PRINT			THIS INFORMATION IS CONFIDENTIAL AND IS DISCLOSED TO YOU ON CONDITION THAT NO FURTHER DISCLOSURE IS MADE BY YOU TO OTHER THAN FCI PERSONNEL WITHOUT WRITTEN AUTHORIZATION FROM FCI JAPAN K.K.																		SCALE \times		SIZE A		DWG. NO. JSA 96407				REV B	
DF-140A REV A																														

REVISIONS				
REV	DESCRIPTION	ECN	BY	DATE
A	RELEASED	J05-0270	H.T	5/10/05
B	Added heat resistance	J05-0735	H.T	10/28/05



MATERIAL

INSULATOR : PBT RESIN GLASS REINFORCED (UL94V-0)
 COLOR : BLACK
 CONTACT : PHOSPHOR BRONZE
 PLATING : TIN

NOTE

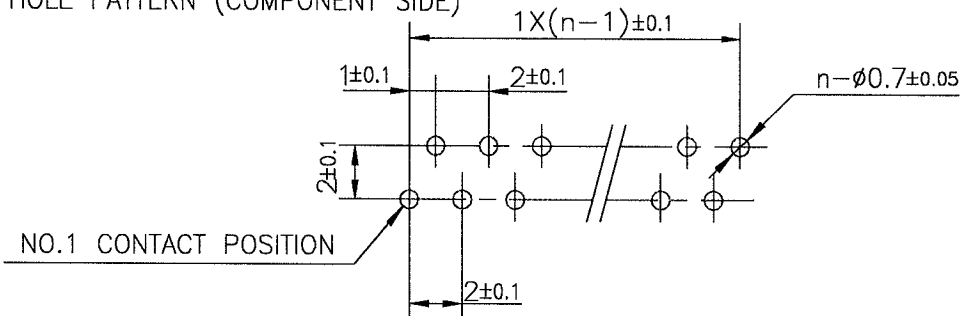
- 1.THIS PRODUCT IS STRAIGHT TYPE CONNECTOR.
- 2.THIS PRODUCT MEETS EUROPEAN UNION DIRECTIVES AND OTHER COUNTRY REGULATIONS AS DESCRIBED IN GS-22-008.
- 3.THE HOUSING WILL WITHSTAND EXPOSURE TO 260°C PEAK TEMPERATURE FOR 10 SECONDS IN A WAVE SOLDER APPLICATION WITH A 1.6mm THICK CIRCUIT BOARD.

RECOMMENDED PC BOARD

n : NO. OF CONTACTS

THICKNESS : 1.2~1.6

HOLE PATTERN (COMPONENT SIDE)



SHEET INDEX	ISSUE	B											
	SH NO.	1											
TOLERANCES UNLESS OTHERWISE SPECIFIED			DR		DATE	CUSTOMER COPY	TITLE 1mm SPACING CONNECTOR FOR CIC (Cat. No. :HLW__S-6C7LF)						
±0.2			ENGR		10/28/05								
LINEAR			CHK		10/31/05	THIRD ANGLE PROJ	PRODUCT FAMILY 58JF						
ANGLES			APPD		11/1/05	UNIT							
DO NOT SCALE PRINT			THIS INFORMATION IS CONFIDENTIAL AND IS DISCLOSED TO YOU ON CONDITION THAT NO FURTHER DISCLOSURE IS MADE BY YOU TO OTHER THAN FCI PERSONNEL WITHOUT WRITTEN AUTHORIZATION FROM FCI JAPAN K.K.				SCALE	SIZE	DWG. NO.	REV	SHEET		
DF-140A REV A							X	A	JSA 96408	B	1 of 1		

SC-HLW 06 JSA96404

PDM: Rev:B

STATUS: Released

Printed: Nov 29, 2005

