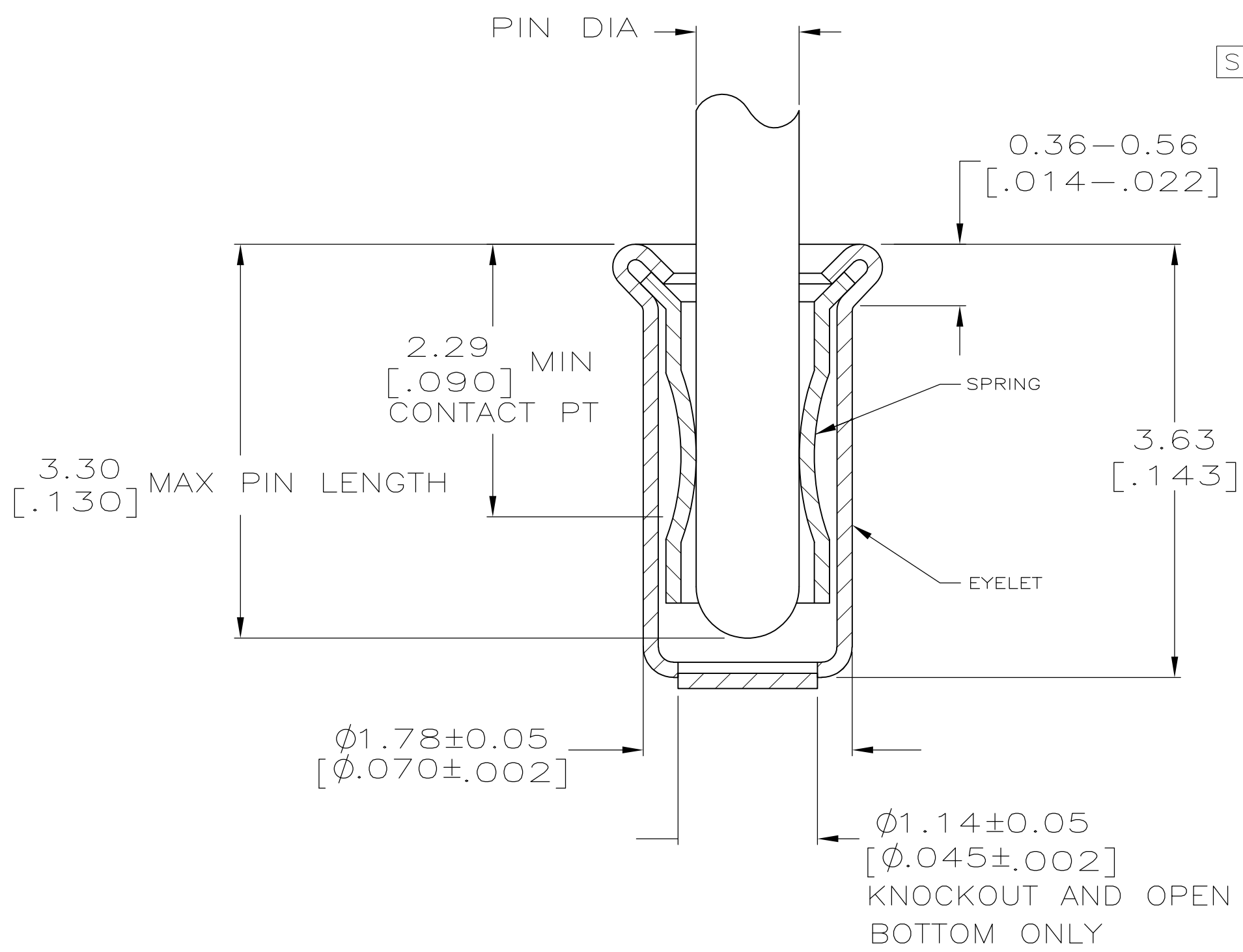
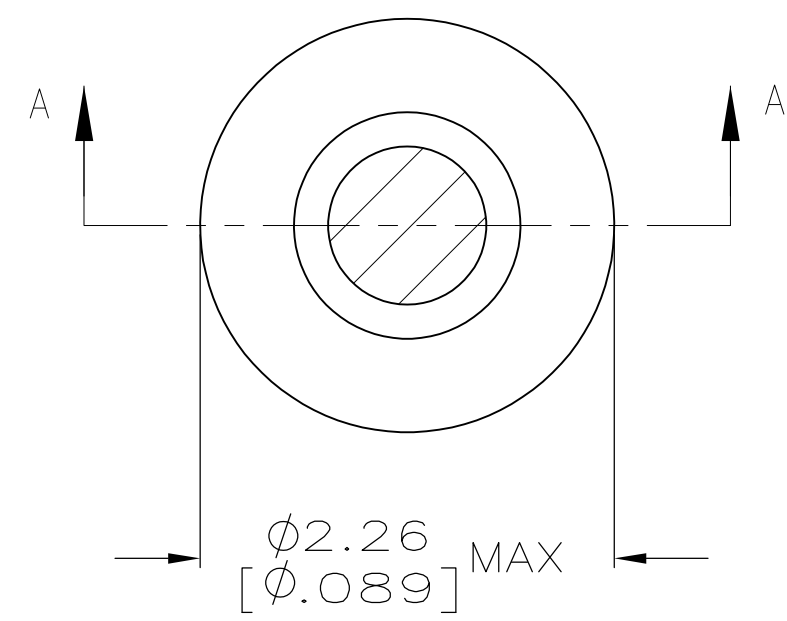


THIS DRAWING IS UNPUBLISHED. RELEASED FOR PUBLICATION  
 © COPYRIGHT BY TYCO ELECTRONICS CORPORATION. ALL RIGHTS RESERVED.

LOC	DIST	REVISIONS					
FT	64	P	LTR	DESCRIPTION	DATE	DWN	APVD
		AK		REVISED PER ECO-09-026264	09MAR2010	HMR	DB

- 1. TIN PER MIL-T-10727 OR TIN LEAD 0.00254 [.000100] MIN THK.
- 2. NICKEL UNDERPLATE ALL OVER, MATING SURFACE PLATED TO MEET PERFORMANCE REQUIREMENTS OF TYCO PRODUCT SPECIFICATION 108-14008.
- 3. GOLD FLASH PER MIL-G-45204, TYPE II, 0.13µm [.000005] MIN THK. OVER NICKEL PLATE PER QQ-N-290 0.51µm-1.52µm [.000020-.000060] EXT THK.
- 4. TIN PER MIL-T-10727 OR TIN LEAD 0.00381 [.000150] MIN THK.
- 5. RECOMMENDED HOLE SIZE, PLATED OR UNPLATED:  
 MACHINE INSERTION: 1.83 <sup>+0.10</sup>/<sub>-0.08</sub> [.072 <sup>+0.004</sup>/<sub>-.003</sub>]  
 HAND INSERTION: 1.83 <sup>+0.10</sup>/<sub>-0.00</sub> [.072 <sup>+0.004</sup>/<sub>-.000</sub>]
- 6. APPLICATION TOOL PART NUMBER: MACHINE NO. 682127-5  
 INSERTION HEAD NO. 682039-4
- 7. TO INSURE PROPER SPRING TENSION DO NOT EXCEED A 0.05 [.002] DIFFERENCE IN PIN DIA WHEN CHANGING TO A SMALLER PIN.
- 8. BOTTOM PLUG KNOCKOUT TOOL PART NUMBER 69729 WITH TIP PART NUMBER 69728-2.
- 9. MATERIAL: SPRING: BERYLLIUM COPPER (QQ-C-533)  
 EYELET: COPPER (QQ-C-576)



OBSOLETE	OPEN	0.71-0.84 [.028-.033]	TIN 1	GOLD 2	4-332070-4
		0.94-1.02 [.037-.040]		GOLD 2	4-332070-3
SUPSD BY 1-332070-9					3-332070-9
OBSOLETE	KNOCKOUT	0.94-1.02 [.037-.040]	TIN 1	GOLD 2	3-332070-5
OBSOLETE				TIN 1	3-332070-4
SUPSD BY 50865-1					3-332070-3
	KNOCKOUT	0.76-0.84 [.030-.033]		TIN 1	3-332070-0
OBSOLETE		0.94-1.02 [.037-.040]		GOLD 2	2-332070-9
OBSOLETE				TIN 1	2-332070-8
OBSOLETE	OPEN	0.86-0.94 [.034-.037]		GOLD 2	2-332070-7
OBSOLETE				TIN 1	2-332070-6
OBSOLETE		0.76-0.84 [.030-.033]	TIN 1	GOLD 2	2-332070-5
OBSOLETE				TIN 1	2-332070-4
OBSOLETE		0.94-1.02 [.037-.040]		GOLD 2	2-332070-3
OBSOLETE	CLOSED	0.86-0.94 [.034-.037]		TIN 1	2-332070-2
OBSOLETE		0.76-0.84 [.030-.033]		GOLD 2	2-332070-1
OBSOLETE				TIN 1	2-332070-0
OBSOLETE	KNOCKOUT	0.94-1.02 [.037-.040]		GOLD 2	1-332070-9
OBSOLETE		0.94-1.02 [.037-.040]		TIN 1	1-332070-8
OBSOLETE	OPEN	0.86-0.94 [.034-.037]		GOLD 2	1-332070-7
OBSOLETE		0.76-0.84 [.030-.033]	GOLD 3	GOLD 2	1-332070-4
OBSOLETE		0.94-1.02 [.037-.040]			1-332070-3
OBSOLETE	CLOSED	0.86-0.94 [.034-.037]			1-332070-2
OBSOLETE		0.76-0.84 [.030-.033]			1-332070-1
OBSOLETE		0.86-0.94 [.034-.037]			1-332070-0
OBSOLETE		0.76-0.84 [.030-.033]			332070
	BOTTOM TYPE	RECOMMENDED PIN DIA 7	EYELET	SPRING	PART NO
			FINISH		

THIS DRAWING IS A CONTROLLED DOCUMENT. DWN 4-5-91 R. TALLEY  
 CHK 8-5-91 R. MILLER  
 APVD 8-22-91 S. ROBERTSON

Tyco Electronics Corporation  
 Harrisburg, PA 17105-3608

MINIATURE SPRING SOCKET ASSEMBLY, SERIES 4

SIZE A2 CAGE CODE 00779 DRAWING NO C-332070 RESTRICTED TO -  
 SCALE 20:1 SHEET 1 OF 1 REV AK

DIMENSIONS: mm [INCHES] TOLERANCES UNLESS OTHERWISE SPECIFIED:  
 0 PLC ± -  
 1 PLC ± -  
 2 PLC ± -  
 3 PLC ± 0.20 [.008]  
 4 PLC ± -  
 ANGLES ± -

MATERIAL FINISH SEE TABLE WEIGHT -

CUSTOMER DRAWING