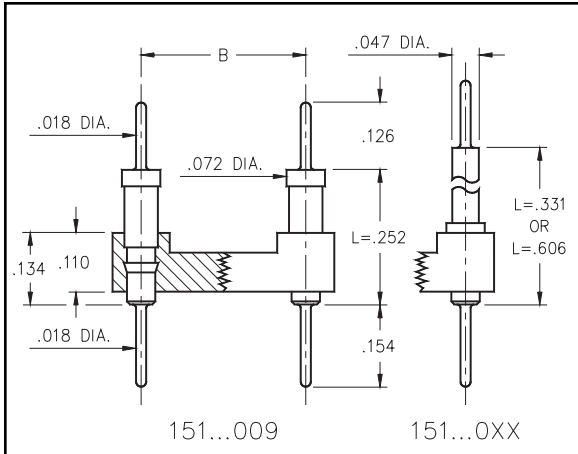




DUAL-IN-LINE PIN HEADERS

Interconnect Open Frame

Series 151...009, 010, 011



- Series 151 DIL Headers use .018" dia. solder tails at both ends make this header entirely pluggable.
- Series:
151...009 use MM #5509 pins
151...010 use MM #5510 pins
151...011 use MM #5511 pins
See pages 179 and 181 for details.
- Insulators are high temperature thermoplastic.



Total number of pins				Quantity per tube	<div style="border: 1px solid black; border-radius: 50%; padding: 5px; display: inline-block;"> <i>For Electrical, Mechanical & Environmental Data, See pg. 4</i> </div>			<div style="border: 1px solid black; padding: 5px; display: inline-block;"> Ordering Information </div>			<div style="border: 1px solid black; padding: 5px; display: inline-block;"> RoHS 2002/95/EC </div>		
	A	B	C		L = .252	L = .331	L = .606						
10	0.5	0.2	0.3	41	151-10-210-00-009000	151-10-210-00-010000	151-10-210-00-011000						
4	0.2	0.3	0.4	102	151-10-304-00-009000	151-10-304-00-010000	151-10-304-00-011000						
6	0.3	0.3	0.4	67	151-10-306-00-009000	151-10-306-00-010000	151-10-306-00-011000						
8	0.4	0.3	0.4	50	151-10-308-00-009000	151-10-308-00-010000	151-10-308-00-011000						
10	0.5	0.3	0.4	40	151-10-310-00-009000	151-10-310-00-010000	151-10-310-00-011000						
14	0.7	0.3	0.4	28	151-10-314-00-009000	151-10-314-00-010000	151-10-314-00-011000						
16	0.8	0.3	0.4	25	151-10-316-00-009000	151-10-316-00-010000	151-10-316-00-011000						
18	0.9	0.3	0.4	22	151-10-318-00-009000	151-10-318-00-010000	151-10-318-00-011000						
20	1.0	0.3	0.4	20	151-10-320-00-009000	151-10-320-00-010000	151-10-320-00-011000						
22	1.1	0.3	0.4	18	151-10-322-00-009000	151-10-322-00-010000	151-10-322-00-011000						
24	1.2	0.3	0.4	16	151-10-324-00-009000	151-10-324-00-010000	151-10-324-00-011000						
28	1.4	0.3	0.4	14	151-10-328-00-009000	151-10-328-00-010000	151-10-328-00-011000						
20	1.0	0.4	0.5	20	151-10-420-00-009000	151-10-420-00-010000	151-10-420-00-011000						
22	1.1	0.4	0.5	18	151-10-422-00-009000	151-10-422-00-010000	151-10-422-00-011000						
24	1.2	0.4	0.5	16	151-10-424-00-009000	151-10-424-00-010000	151-10-424-00-011000						
28	1.4	0.4	0.5	14	151-10-428-00-009000	151-10-428-00-010000	151-10-428-00-011000						
32	1.6	0.4	0.5	12	151-10-432-00-009000	151-10-432-00-010000	151-10-432-00-011000						
24	1.2	0.6	0.7	16	151-10-624-00-009000	151-10-624-00-010000	151-10-624-00-011000						
28	1.4	0.6	0.7	14	151-10-628-00-009000	151-10-628-00-010000	151-10-628-00-011000						
32	1.6	0.6	0.7	12	151-10-632-00-009000	151-10-632-00-010000	151-10-632-00-011000						
36	1.8	0.6	0.7	11	151-10-636-00-009000	151-10-636-00-010000	151-10-636-00-011000						
40	2.0	0.6	0.7	10	151-10-640-00-009000	151-10-640-00-010000	151-10-640-00-011000						
42	2.1	0.6	0.7	9	151-10-642-00-009000	151-10-642-00-010000	151-10-642-00-011000						
48	2.4	0.6	0.7	8	151-10-648-00-009000	151-10-648-00-010000	151-10-648-00-011000						
50	2.5	0.6	0.7	8	151-10-650-00-009000	151-10-650-00-010000	151-10-650-00-011000						
52	2.6	0.6	0.7	7	151-10-652-00-009000	151-10-652-00-010000	151-10-652-00-011000						
50	2.5	0.9	1.0	8	151-10-950-00-009000	151-10-950-00-010000	151-10-950-00-011000						
52	2.6	0.9	1.0	7	151-10-952-00-009000	151-10-952-00-010000	151-10-952-00-011000						
64	3.2	0.9	1.0	6	151-10-964-00-009000	151-10-964-00-010000	151-10-964-00-011000						

For RoHS compliance select ◇ plating code.

PLATING CODE =

10◇

Pin Plating

10μ" Au