

<USER10>DEPT5270>E24001>U, 250>S, C-172129

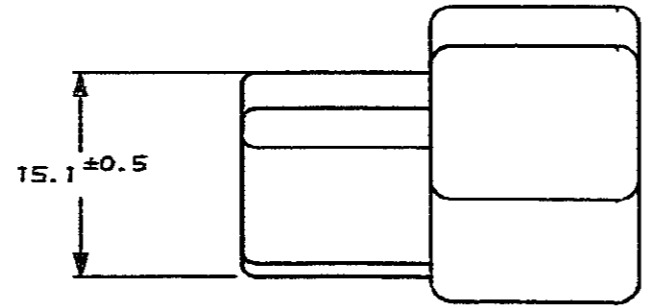
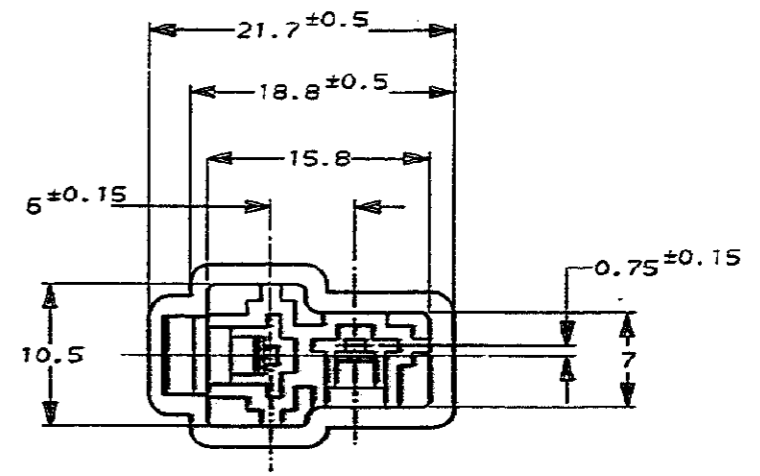
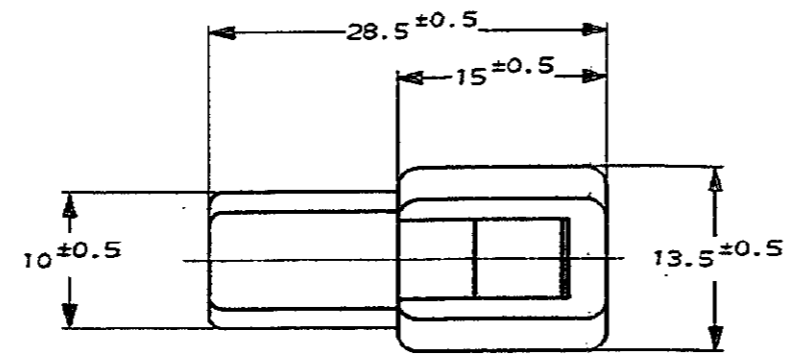
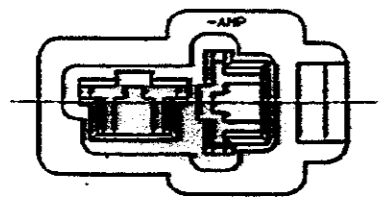
NUMBER
C-172129



METRIC

DIMENSIONS IN MM. DO NOT SCALE PRINT

PRINT DIST



注.

- 1. 嵌合する相手ハウジングは型番172130
- 2. 使用端子は型番170340, 170341, 170349

NOTE.

- 1. THE MATING PLUG HOUSING, P/N 172130
- 2. APPLIED CONTACT, P/N 170340, 170341, 170349

⚠ OBSOLETE PARTS: OBSOLETE CIS STREAMLINING PER D.RENAUD/D.SINISI

⚠ OBSOLETE

⚠ OBSOLETE

淡灰 (LIGHT GRAY)	6-172129-5
自然色 (NATURAL) 94V-0	1-▲-1
赤 (RED)	-9
橙 (ORANGE)	-8
青 (BLUE)	-5
緑 (GREEN)	-4
茶 (BROWN)	-3
黒 (BLACK)	▼-2
自然色 (NATURAL)	172129-1
色 (COLOR)	番号 (NUMBER)

Copyright © 1979 年 AMP (Japan), LTD. ALL RIGHTS RESERVED.		Copyright © 1979 AMP (Japan), LTD. ALL RIGHTS RESERVED.		AMP 日本エー・エム・ピー株式会社 Tokyo, Japan	
材料 (MATERIAL) 6/6 ナイロン (6/6 NYLON)		仕上 (FINISH) 色: 表参照 (COLOR: SEE TABLE)		名称 (NAME) "250"シリーズ ハウジング ランス コネクタ 2極 キャップ ハウジング "250" SERIES HOUSING LANCE CONNECTOR 2P CAP HOUSING	
C1	REVISED PER ECO-10-000445	KK	AEG	JAN10	
C	REDRAWN W/CHANGE FJ00-0263-23	KY	J	9/10/93	
LTR	変更 (REVISION RECORD)	DR	CHK	DATE	
一般公差 (GENERAL TOLERANCE)		公差 (TOLERANCE)		公差 (TOLERANCE)	
ISO H7/g6		ISO H7/g6		ISO H7/g6	
ISO H8/h7		ISO H8/h7		ISO H8/h7	
ISO H9/d9		ISO H9/d9		ISO H9/d9	
ISO H10/k9		ISO H10/k9		ISO H10/k9	
ISO H11/h8		ISO H11/h8		ISO H11/h8	
ISO H12/h7		ISO H12/h7		ISO H12/h7	
ISO H13/h6		ISO H13/h6		ISO H13/h6	
ISO H14/h5		ISO H14/h5		ISO H14/h5	
ISO H15/h4		ISO H15/h4		ISO H15/h4	
ISO H16/h3		ISO H16/h3		ISO H16/h3	
ISO H17/h2		ISO H17/h2		ISO H17/h2	
ISO H18/h1		ISO H18/h1		ISO H18/h1	
ISO H19/h1		ISO H19/h1		ISO H19/h1	
ISO H20/h1		ISO H20/h1		ISO H20/h1	
ISO H21/h1		ISO H21/h1		ISO H21/h1	
ISO H22/h1		ISO H22/h1		ISO H22/h1	
ISO H23/h1		ISO H23/h1		ISO H23/h1	
ISO H24/h1		ISO H24/h1		ISO H24/h1	
ISO H25/h1		ISO H25/h1		ISO H25/h1	
ISO H26/h1		ISO H26/h1		ISO H26/h1	
ISO H27/h1		ISO H27/h1		ISO H27/h1	
ISO H28/h1		ISO H28/h1		ISO H28/h1	
ISO H29/h1		ISO H29/h1		ISO H29/h1	
ISO H30/h1		ISO H30/h1		ISO H30/h1	
ISO H31/h1		ISO H31/h1		ISO H31/h1	
ISO H32/h1		ISO H32/h1		ISO H32/h1	
ISO H33/h1		ISO H33/h1		ISO H33/h1	
ISO H34/h1		ISO H34/h1		ISO H34/h1	
ISO H35/h1		ISO H35/h1		ISO H35/h1	
ISO H36/h1		ISO H36/h1		ISO H36/h1	
ISO H37/h1		ISO H37/h1		ISO H37/h1	
ISO H38/h1		ISO H38/h1		ISO H38/h1	
ISO H39/h1		ISO H39/h1		ISO H39/h1	
ISO H40/h1		ISO H40/h1		ISO H40/h1	
ISO H41/h1		ISO H41/h1		ISO H41/h1	
ISO H42/h1		ISO H42/h1		ISO H42/h1	
ISO H43/h1		ISO H43/h1		ISO H43/h1	
ISO H44/h1		ISO H44/h1		ISO H44/h1	
ISO H45/h1		ISO H45/h1		ISO H45/h1	
ISO H46/h1		ISO H46/h1		ISO H46/h1	
ISO H47/h1		ISO H47/h1		ISO H47/h1	
ISO H48/h1		ISO H48/h1		ISO H48/h1	
ISO H49/h1		ISO H49/h1		ISO H49/h1	
ISO H50/h1		ISO H50/h1		ISO H50/h1	
ISO H51/h1		ISO H51/h1		ISO H51/h1	
ISO H52/h1		ISO H52/h1		ISO H52/h1	
ISO H53/h1		ISO H53/h1		ISO H53/h1	
ISO H54/h1		ISO H54/h1		ISO H54/h1	
ISO H55/h1		ISO H55/h1		ISO H55/h1	
ISO H56/h1		ISO H56/h1		ISO H56/h1	
ISO H57/h1		ISO H57/h1		ISO H57/h1	
ISO H58/h1		ISO H58/h1		ISO H58/h1	
ISO H59/h1		ISO H59/h1		ISO H59/h1	
ISO H60/h1		ISO H60/h1		ISO H60/h1	
ISO H61/h1		ISO H61/h1		ISO H61/h1	
ISO H62/h1		ISO H62/h1		ISO H62/h1	
ISO H63/h1		ISO H63/h1		ISO H63/h1	
ISO H64/h1		ISO H64/h1		ISO H64/h1	
ISO H65/h1		ISO H65/h1		ISO H65/h1	
ISO H66/h1		ISO H66/h1		ISO H66/h1	
ISO H67/h1		ISO H67/h1		ISO H67/h1	
ISO H68/h1		ISO H68/h1		ISO H68/h1	
ISO H69/h1		ISO H69/h1		ISO H69/h1	
ISO H70/h1		ISO H70/h1		ISO H70/h1	
ISO H71/h1		ISO H71/h1		ISO H71/h1	
ISO H72/h1		ISO H72/h1		ISO H72/h1	
ISO H73/h1		ISO H73/h1		ISO H73/h1	
ISO H74/h1		ISO H74/h1		ISO H74/h1	
ISO H75/h1		ISO H75/h1		ISO H75/h1	
ISO H76/h1		ISO H76/h1		ISO H76/h1	
ISO H77/h1		ISO H77/h1		ISO H77/h1	
ISO H78/h1		ISO H78/h1		ISO H78/h1	
ISO H79/h1		ISO H79/h1		ISO H79/h1	
ISO H80/h1		ISO H80/h1		ISO H80/h1	
ISO H81/h1		ISO H81/h1		ISO H81/h1	
ISO H82/h1		ISO H82/h1		ISO H82/h1	
ISO H83/h1		ISO H83/h1		ISO H83/h1	
ISO H84/h1		ISO H84/h1		ISO H84/h1	
ISO H85/h1		ISO H85/h1		ISO H85/h1	
ISO H86/h1		ISO H86/h1		ISO H86/h1	
ISO H87/h1		ISO H87/h1		ISO H87/h1	
ISO H88/h1		ISO H88/h1		ISO H88/h1	
ISO H89/h1		ISO H89/h1		ISO H89/h1	
ISO H90/h1		ISO H90/h1		ISO H90/h1	
ISO H91/h1		ISO H91/h1		ISO H91/h1	
ISO H92/h1		ISO H92/h1		ISO H92/h1	
ISO H93/h1		ISO H93/h1		ISO H93/h1	
ISO H94/h1		ISO H94/h1		ISO H94/h1	
ISO H95/h1		ISO H95/h1		ISO H95/h1	
ISO H96/h1		ISO H96/h1		ISO H96/h1	
ISO H97/h1		ISO H97/h1		ISO H97/h1	
ISO H98/h1		ISO H98/h1		ISO H98/h1	
ISO H99/h1		ISO H99/h1		ISO H99/h1	
ISO H100/h1		ISO H100/h1		ISO H100/h1	

(CUSTOMER DRAWING) 参考 図 面